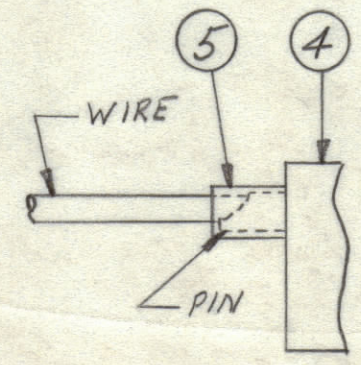
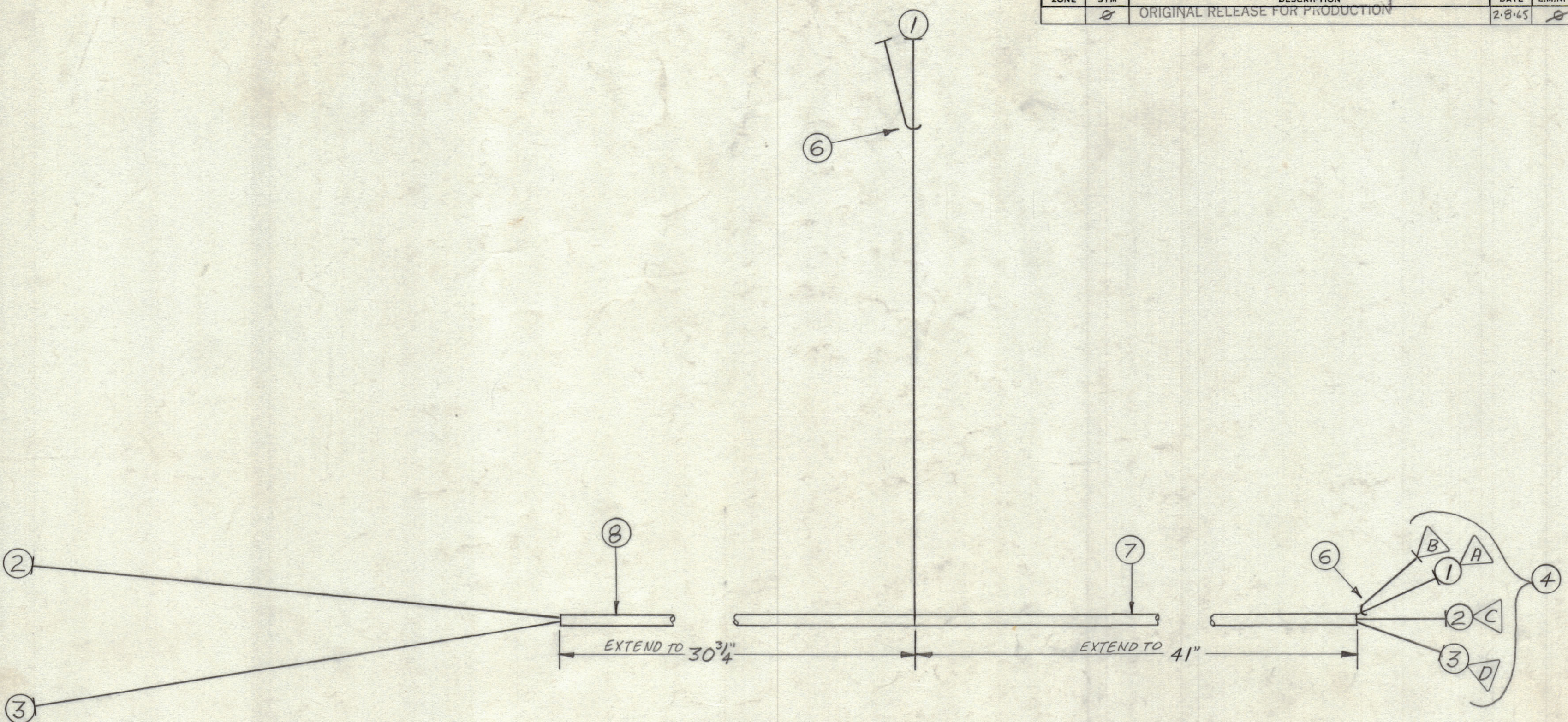


REVISIONS							
ZONE	SYM	DESCRIPTION	DATE	E.M.N. NO.	DRAFT	CHKD	APPD
	Ø	ORIGINAL RELEASE FOR PRODUCTION	2-8-65				



THIS SYMBOL DENOTES END OF INSULATION AND NAIL DRIVING POINT. WIRE MUST BE STRIPPED 3/4" BEYOND THIS POINT AND TINNED 1/2" UNLESS OTHERWISE SPECIFIED.

THE ABOVE SYMBOL DENOTES END OF SHIELD, WHICH SHOULD BE TERMINATED AS SHOWN, LEAVING EXCESS SHIELDING AS A PIGTAIL. TIN PIGTAIL 1/4 INCH.

LACE ENDS OF SLEEVING.
LACE AND TAPE JUNCTION OF SLEEVING.

NOTES

1	KIT 224	
Q'TY./UNIT	MODEL USED ON	ASS'Y. NO.
SCALE	CODE	

THE CONTENTS OF THIS DRAWING ARE THE EXCLUSIVE PROPERTY OF THE TECHNICAL MATERIEL CORP. ITS UNAUTHORIZED USE OR REPRODUCTION IN WHOLE OR IN PART IS STRICTLY FORBIDDEN.

REQ'D.	ITEM	PART NUMBER	FROM	DESCRIPTION	TO	SYMBOL
X	11	TA100-1		TAPE, ELECTRICAL		
X	10	CD101-1MW		CORD, LACING		
X	9	BS100		SOLDER, TIN ALY		
30 3/4"	8	PX100-1-133		INSULATION, SLEEVING		
41"	7	PX100-1-208				
1"	6	PXB30-12-1			SHRINK	
2"	5	PXB30-10-1				
1	4	MS3102A20-27S		CONNECTOR, RECEPTACLE, FEMALE		J1010
	3	MWC22(7)U97	J1010	PIN D	S1004	
	2	MWC22(7)U7		C	S1004	
	1	RG174/U		A	J1001 PIN h	

B.NAP LIST OF MATERIAL			
MATERIAL		THE TECHNICAL MATERIEL CORP. MAMARONECK, NEW YORK	
FINISH		TITLE WIRING HARNESS, BRANCHED	
UNLESS OTHERWISE SPECIFIED DIMENSIONS ARE IN INCHES AND INCLUDE CHEMICALLY APPLIED OR PLATED FINISHES	DRAWN B.N.	DATE 2/8/65	FINAL APPROVAL [Signature]
DECIMALS .X ± .05 .XX ± .01 .XXX ± .005	TOLERANCES	ELECT. DES. [Signature]	DATE [Signature]
FRACTIONS ± 1/64 ANGLES ± 0° 30'		MECH. DES. [Signature]	DATE [Signature]
		SHEET CA1029	
		REV. LTR. Ø	

CA1029
Ø

H
G
F
E
D
C
B
A

H
G
F
E
D
C
B
A