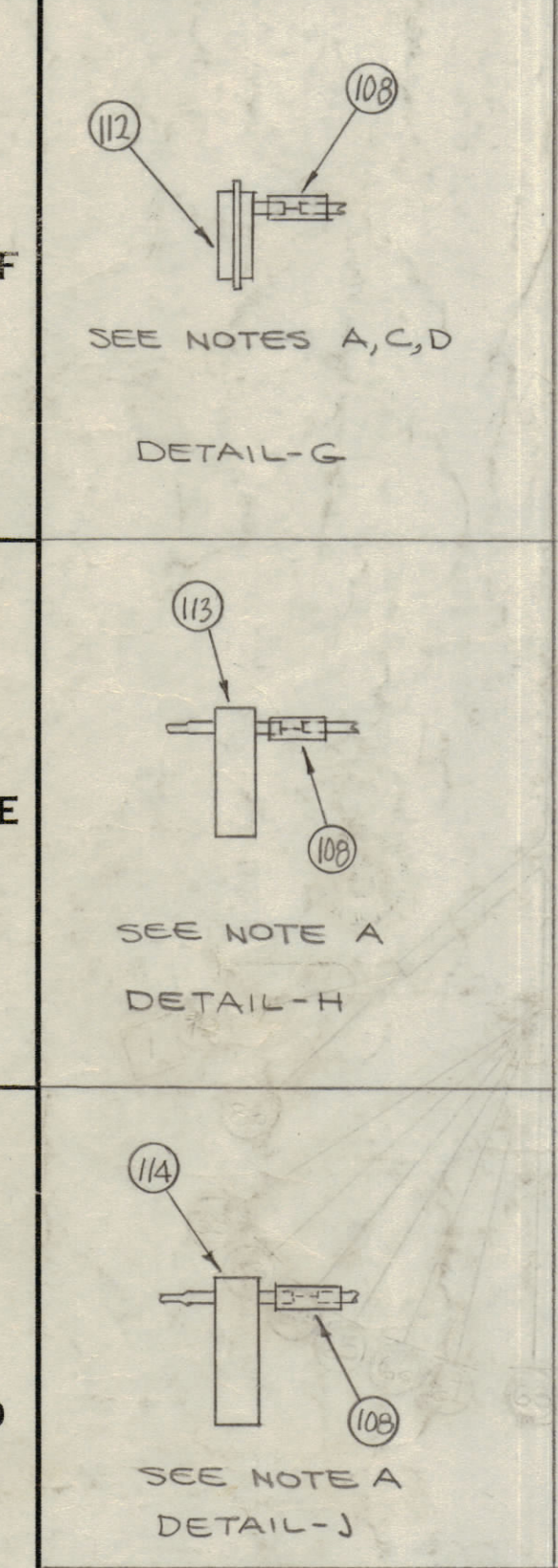
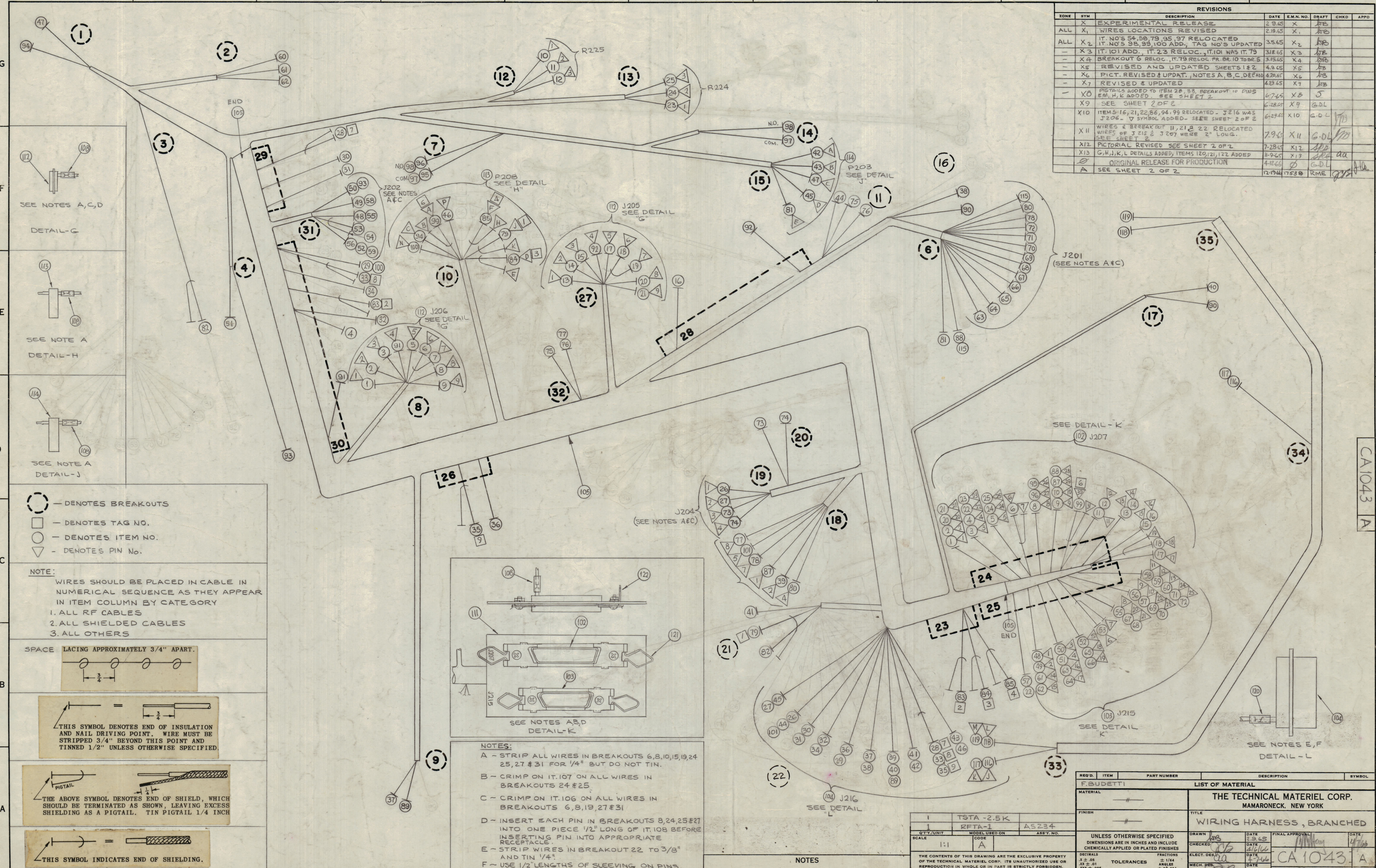
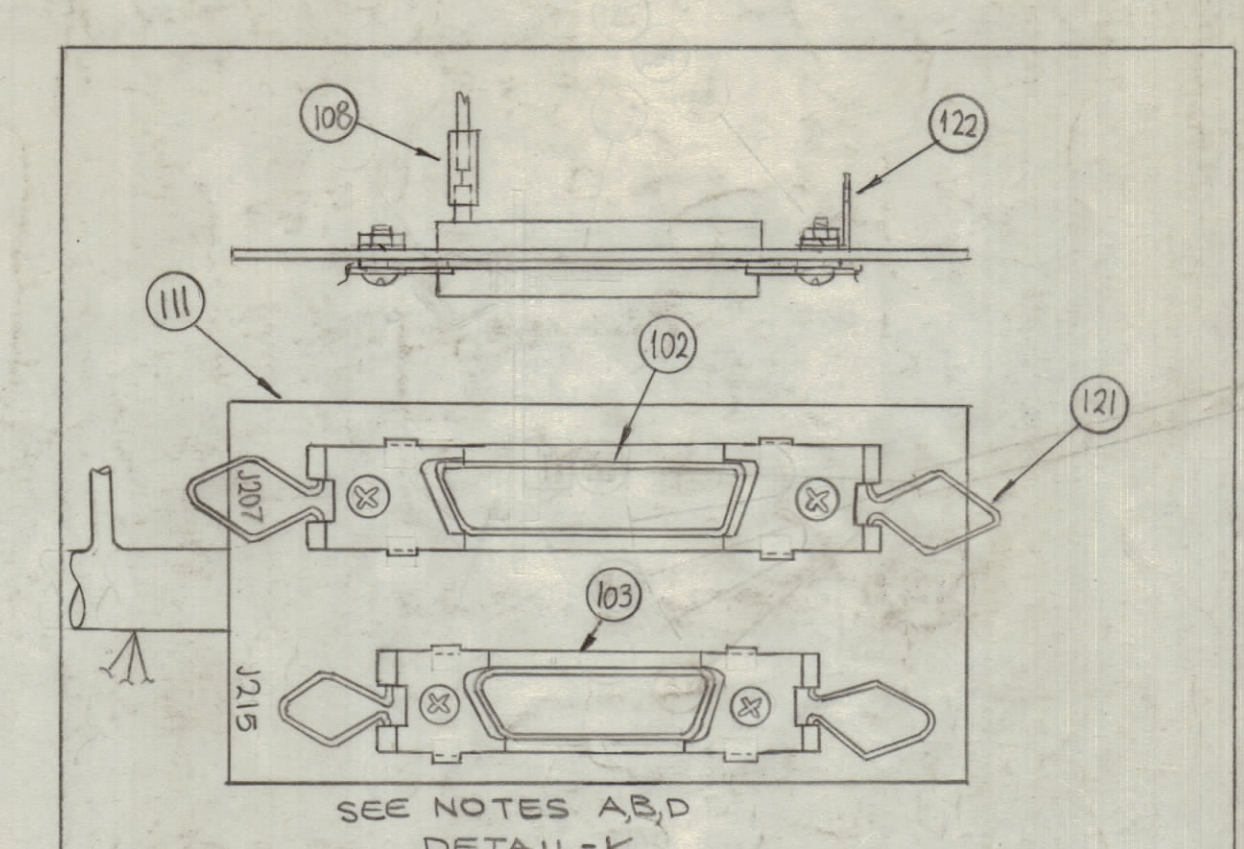
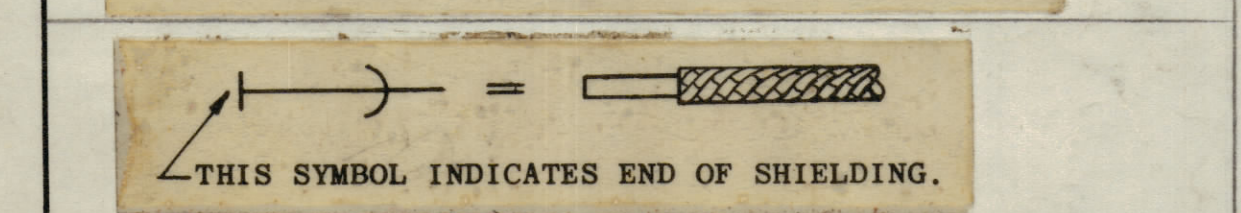
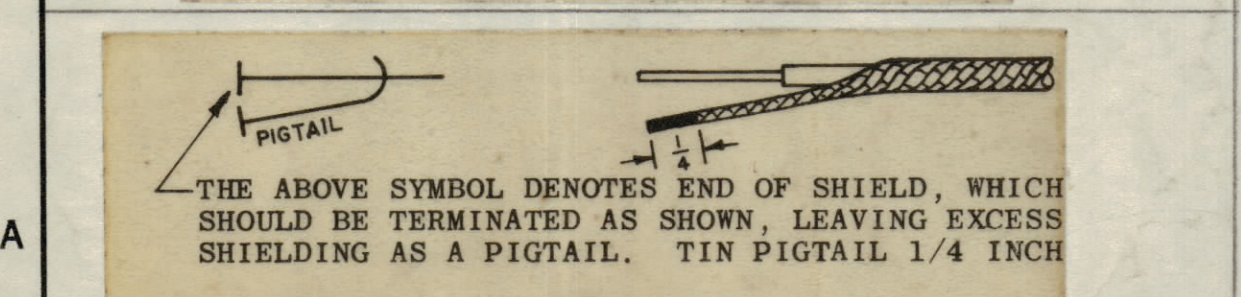
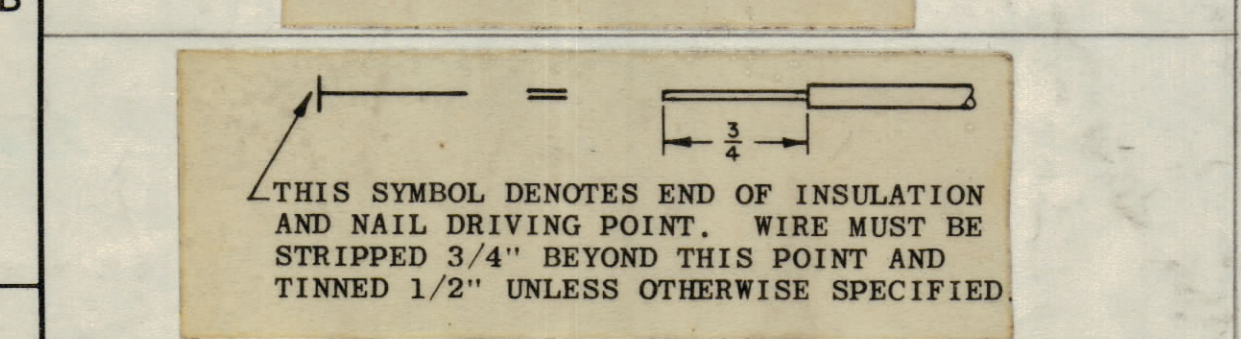
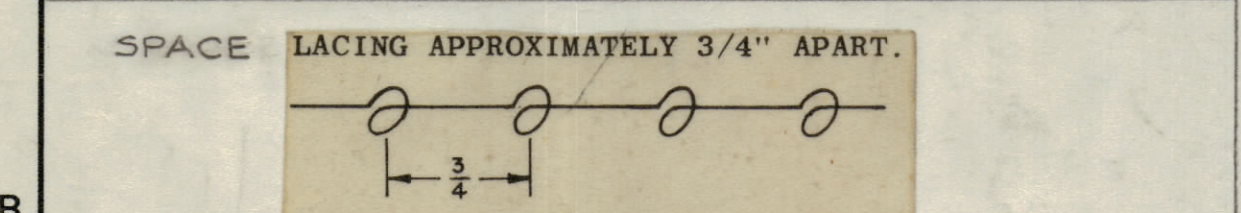


REVISIONS						
ZONE	SYM	DESCRIPTION	DATE	EM.N. NO.	DRAFT	CHKD
X		EXPERIMENTAL RELEASE	2-9-65	X	ARB	
ALL	X1	WIRES LOCATIONS REVISED	2-19-65	X1	ARB	
ALL	X2	IT. NO'S 54, 58, 79, 95, 97 RELOCATED IT. NO'S 98, 99, 100 ADD., TAG NO'S UPDATED	3-5-65	X2	ARB	
-	X3	IT. 101 ADD., IT. 23 RELOC., IT. 101 WAS IT. 79	3-18-65	X3	ARB	
-	X4	BREAKOUT 6 RELOC., IT. 79 RELOC. FR. BR. 10 TO BR. 5	3-18-65	X4	ARB	
-	X5	REVISED AND UPDATED SHEETS 1 & 2	4-9-65	X5	ARB	
-	X6	PICT. REVISED & UPDAT., NOTES A, B, C, DEF	4-29-65	X6	ARB	
-	X7	REVISED & UPDATED	4-29-65	X7	ARB	
-	X8	PICTAILS ADDED TO ITEM 28, 33, BREAKOUT 10 PINS EM, H, K ADDED. SEE SHEET 2	6-7-65	X8	J	
-	X9	SEE SHEET 2 OF 2	6-28-65	X9	GDL	
-	X10	ITEMS 16, 21, 22, 86, 94, 99 RELOCATED. J216 WAS J206 - V SYMBOL ADDED. SEE SHEET 2 OF 2	6-29-65	X10	GDL	
-	X11	WIRES & BREAKOUT 11, 21 & 22 RELOCATED WIRES OF J215 & J207 WERE 2" LONG. SEE SHEET 2	7-9-65	X11	GDL	
-	X12	PICTORIAL REVISED SEE SHEET 2 OF 2	7-28-65	X12	ARB	
-	X13	G, H, J, K, L DETAILS ADDED, ITEMS 120, 121, 122 ADDED	11-9-65	X13	ARB	
-	A	ORIGINAL RELEASE FOR PRODUCTION	4-12-66		GDL	
-	A	SEE SHEET 2 OF 2	12-19-66	17538	RME	



○ - DENOTES BREAKOUTS
 □ - DENOTES TAG NO.
 ○ - DENOTES ITEM NO.
 ▽ - DENOTES PIN NO.

NOTE:
 WIRES SHOULD BE PLACED IN CABLE IN NUMERICAL SEQUENCE AS THEY APPEAR IN ITEM COLUMN BY CATEGORY
 1. ALL RF CABLES
 2. ALL SHIELDED CABLES
 3. ALL OTHERS



NOTES:
 A - STRIP ALL WIRES IN BREAKOUTS 6, 8, 10, 15, 19, 24, 25, 27 & 31 FOR 1/4" BUT DO NOT TIN.
 B - CRIMP ON IT. 107 ON ALL WIRES IN BREAKOUTS 24 & 25.
 C - CRIMP ON IT. 106 ON ALL WIRES IN BREAKOUTS 6, 8, 19, 27 & 31.
 D - INSERT EACH PIN IN BREAKOUTS 8, 24, 25 & 27 INTO ONE PIECE 1/2" LONG OF IT. 108 BEFORE INSERTING PIN INTO APPROPRIATE RECEPTACLE.
 E - STRIP WIRES IN BREAKOUT 22 TO 3/8" AND TIN 1/4".
 F - USE 1/2" LENGTHS OF SLEEVING ON PINS.

NOTES

QTY./UNIT	CODE	MODEL USED ON	ASSY. NO.
1		TSTA -2.5K	
		RFTA-1	A5234

REQ'D.	ITEM	PART NUMBER	DESCRIPTION	SYMBOL
F. BUDETTI LIST OF MATERIAL				
MATERIAL				
FINISH				
THE TECHNICAL MATERIEL CORP. MAMARONECK, NEW YORK				
TITLE WIRING HARNESS, BRANCHED				
SCALE	1:1	CODE	A	
UNLESS OTHERWISE SPECIFIED DIMENSIONS ARE IN INCHES AND INCLUDE CHEMICALLY APPLIED OR PLATED FINISHES		DECIMALS	± .05	± .01
TOLERANCES		FRACTIONS	± 1/64	± 1/32
		ANGLE	± 5°	± 5°
DRAWN		DATE	3-9-65	FINAL APPROVAL
CHECKED		DATE	4-16-65	
ELECT. DES.		DATE	4-7-66	
MECH. DES.		DATE		
SHEET 1 OF 2				REV. LTR.

CA1043 A

REV. LTR.