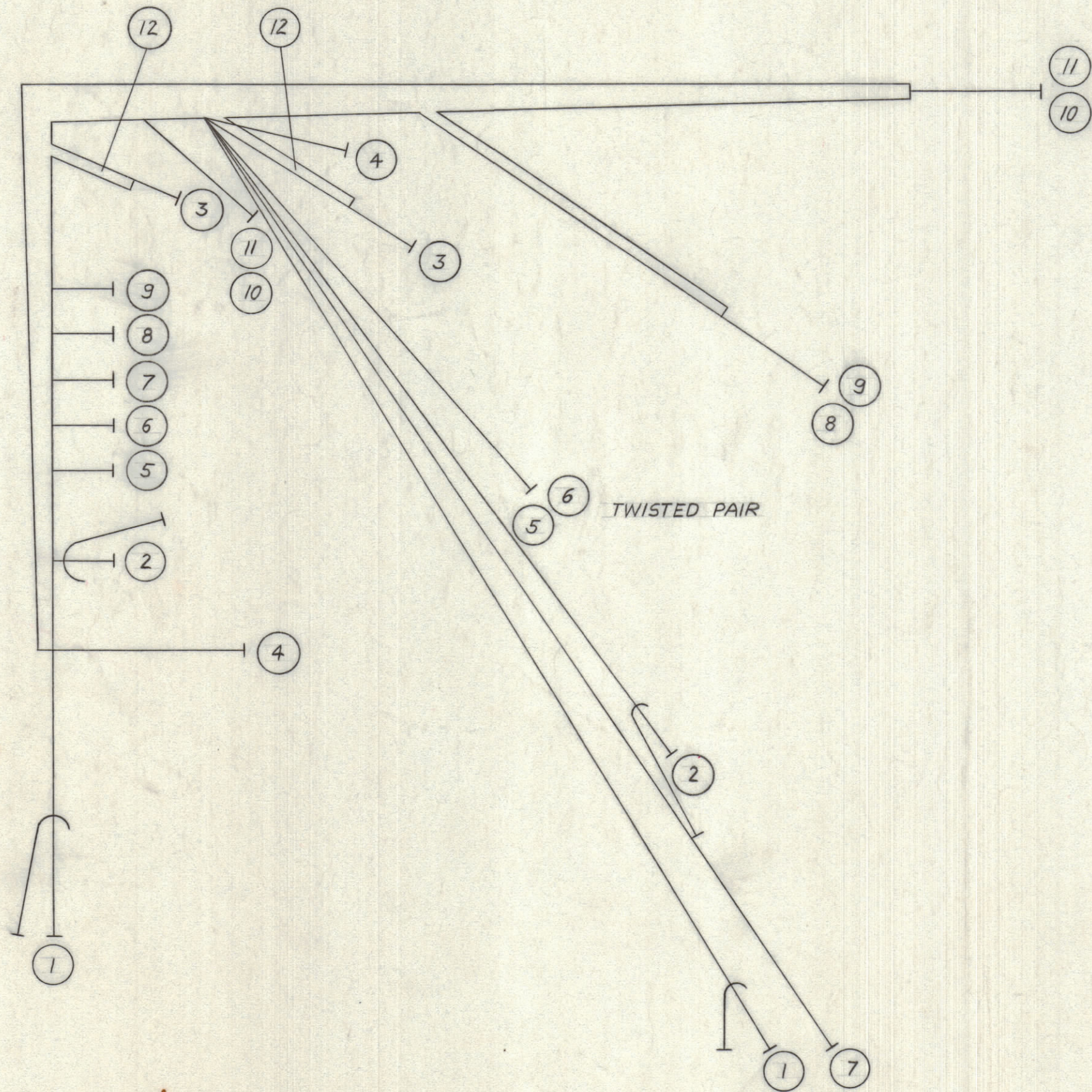


IF IT IS FOUND DESIRABLE TO CHANGE ANY TOLERANCE OR OTHER DETAIL SPECIFIED ON THIS DRAWING NOTIFY THE PURCHASER PROMPTLY.		DIMENSIONS IN INCHES UNLESS OTHERWISE SPECIFIED					
MAXIMUM ALLOWABLE TOLERANCES HAVE BEEN DETERMINED AND DEVIATIONS WILL BE CAUSE FOR REJECTION. REMOVE ALL BURRS AND SHARP EDGES.							
ISSUE	ITEM	CHANGED FROM	DATE	CN. NO.	DRAFTS	CHECKER	ENG. APP.
1		REL TO PROD	28-9-66		RD		<i>[Signature]</i>

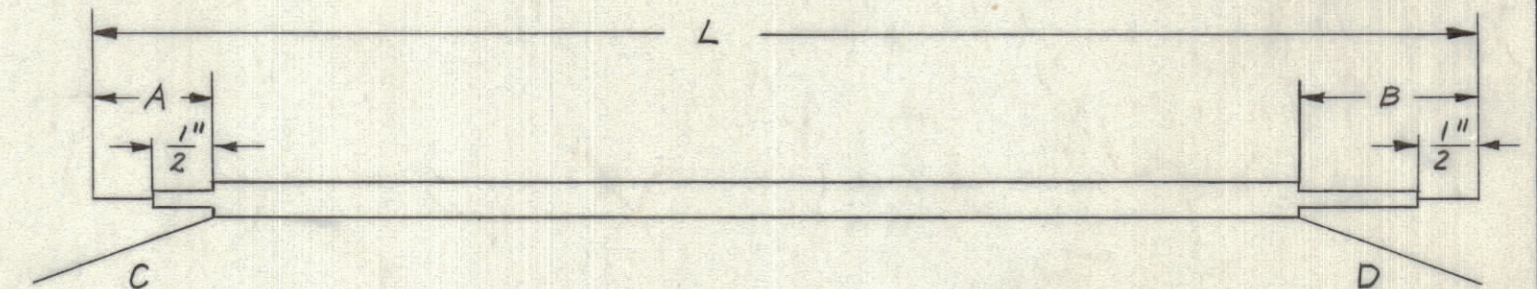
REQ.	ITEM	PART NO.	DESCRIPTION	SYMBOL
1	1	RG 174/u	(SEE DETAIL)	
1	2	RG 174/u	(SEE DETAIL)	
6 3/4"	3	WL 103-1	WIRE, BRAIDED	
10"	4	MWC 22(7)u PINK	WIRE, INSULATED PINK	
10 3/4"	5	91	WH/BROWN	
11 1/2"	6	1	BROWN	
15"	7	4	YELLOW	
10 1/2"	8	6	BLUE	
10 1/4"	9	95	WH/GREEN	
10"	10	96	WH/BLUE	
10"	11	MWC 22(7)u 3	WIRE, INSULATED ORANGE	
4"	12	PX 100-1-.095	SLEEVING	



SCALE EXCEPT FOR DETAIL: 1:1

DETAIL FOR ITEM 1 AND 2

ITEM	A	B	C	D	L
1	7/8"	1 1/2"	7/8"	1 1/2"	18 1/4"
2	1 1/4"	1 1/2"	7/8"	1 1/2"	13 1/4"



CA 10424  $\phi$

TOLERANCES		SCALE:
ALL OTHERS	DEC. DIM. $\pm$ FRAC. DIM. $\pm$ ANGULAR DIM. $\pm$	DRILL, PUNCH, COMMERCIAL STOCK SIZES AND MANUFACTURERS TOLERANCES ARE NOT INCLUDED.

GPR 90 RXD	AME 10 III	9-4-1965
MODEL	PROJECT NO.	DATE
USED ON		

STOCK SIZE		TMC (Canada) LIMITED OTTAWA ONTARIO	
MATERIAL		CABLE 2 <sup>nd</sup> CONVERTER GPR 90 RXD	
TYPE & TEMPER		Drawn	Checked
HEAT TREAT. SPEC.		ELEC. DES. APP.	MECH. DES. APP.
FINISH & SPEC. NO.		FINAL APPROVAL CA 10424 $\phi$	