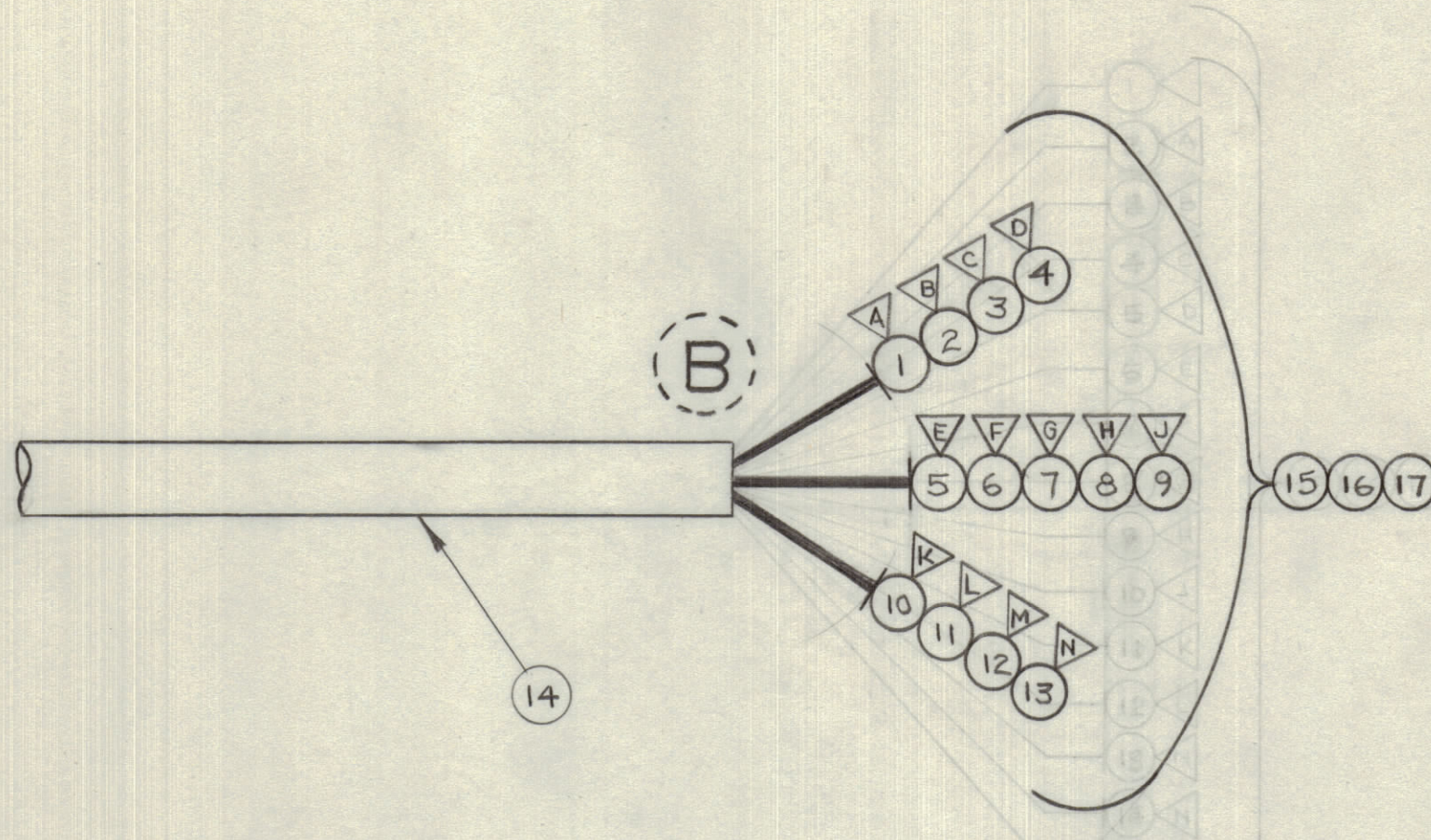
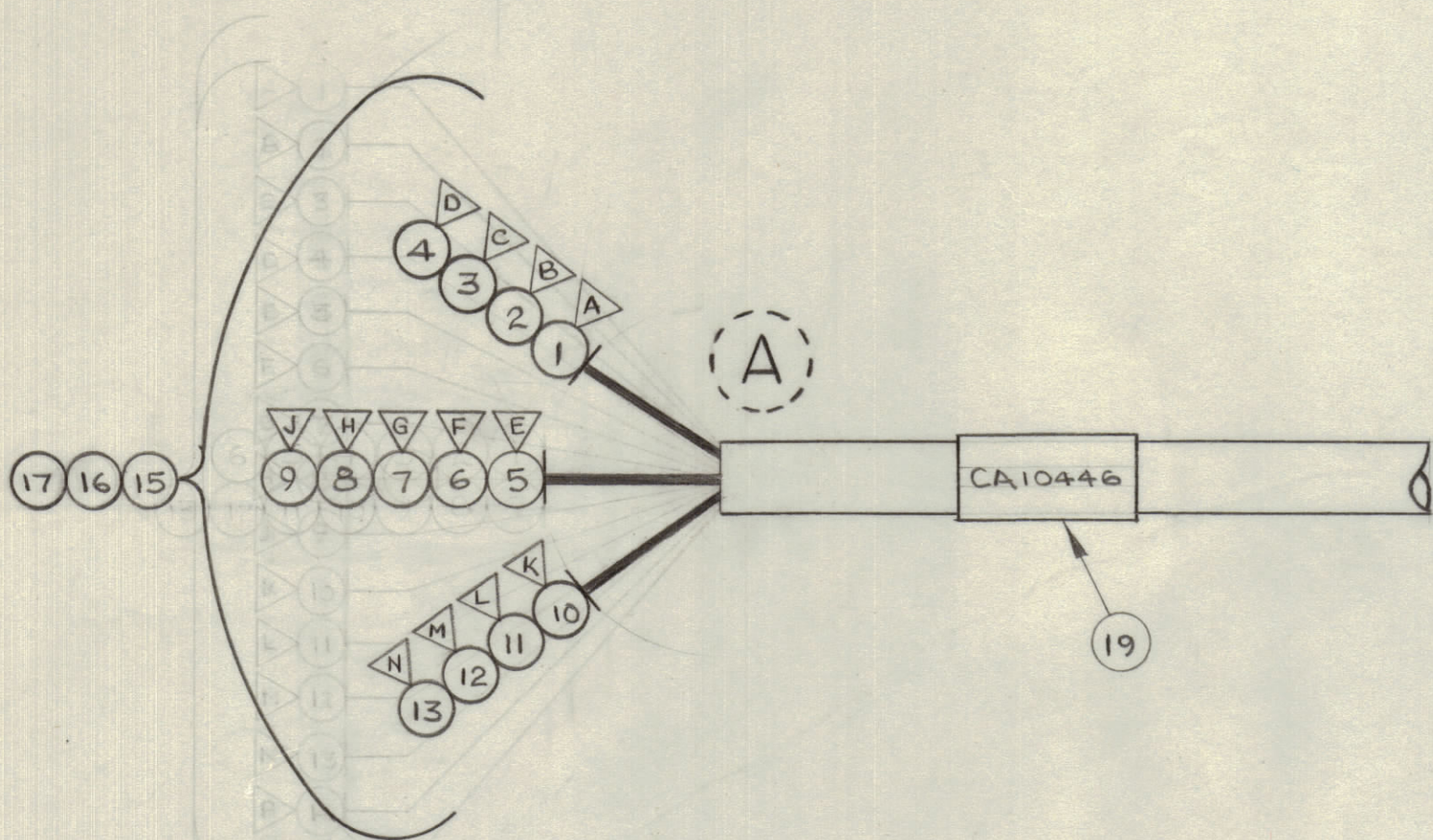
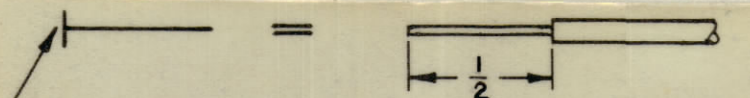


IF IT IS FOUND DESIRABLE TO CHANGE ANY TOLERANCE OR OTHER DETAIL SPECIFIED ON THIS DRAWING NOTIFY THE PURCHASER PROMPTLY.

MAXIMUM ALLOWABLE TOLERANCES HAVE BEEN DETERMINED AND DEVIATIONS WILL BE CAUSE FOR REJECTION. REMOVE ALL BURRS AND SHARP EDGES



CA10446 ϕ

 THIS SYMBOL DENOTES END OF INSULATION AND NAIL DRIVING POINT. WIRE MUST BE STRIPPED 1/2" BEYOND THIS POINT AND TINNED 1/4" UNLESS OTHERWISE SPECIFIED.

| | | | |
|-----|----|---------------|---|
| 1" | 19 | PX100-9-.500 | SLEEVING, MARKED CA10446 C/W LATEST REVISION LETTER |
| AR | 18 | BS100 | SOLDER, SOFT |
| 2 | 17 | MS3420-10 | BUSHING, RUBBER |
| 2 | 16 | MS3057-12 | CLAMP, CABLE |
| 2 | 15 | MS3106B20-29P | CONN., PLUG, MALE |
| 70" | 14 | PX100-1-.438 | SLEEVING, INSULATED |
| 72" | 13 | MWC20(7)U95 | WIRE, ELECTRICAL INSULATED |

| BKOUT (FROM) COMPONENT | BKOUT (TO) COMPONENT | REQ. | ITEM | PART NO. | DESCRIPTION | JOHNSTON | SYMBOL |
|------------------------|----------------------|------|------|----------|-------------|------------|----------------------------|
| A | J1-N | B | J2-N | 12 | U2 | | |
| A | J1-M | B | J2-M | 11 | U92 | | |
| A | J1-L | B | J2-L | 10 | U90 | | |
| A | J1-K | B | J2-K | 9 | U5 | | |
| A | J1-J | B | J2-J | 8 | U1 | | |
| A | J1-H | B | J2-H | 7 | U0 | | |
| A | J1-G | B | J2-G | 6 | U3 | | |
| A | J1-F | B | J2-F | 5 | U7 | | |
| A | J1-E | B | J2-E | 4 | U4 | | |
| A | J1-D | B | J2-D | 3 | U8 | | |
| A | J1-C | B | J2-C | 2 | U6 | | |
| A | J1-B | B | J2-B | 72" | 1 | MWC20(7)U9 | WIRE, ELECTRICAL INSULATED |
| A | J1-A | B | J2-A | 72" | 1 | MWC20(7)U9 | WIRE, ELECTRICAL INSULATED |

RELEASED FOR PROD. MAR 17/66 RPL

| ISSUE | ITEM | CHANGED FROM | DATE | CN. NO. | DRAFTS | CHECKER | ENG. APP. |
|-------|------|--------------|------|---------|--------|---------|-----------|
| | | | | | | | |

TOLERANCES: DEC. DIM. \pm , FRAC. DIM. \pm , ANGULAR DIM. \pm . SCALE: NTS. DRILL, PUNCH, COMMERCIAL STOCK SIZES AND MANUFACTURERS TOLERANCES ARE NOT INCLUDED.

RARB 027/66 MAR 16/66

| MODEL | PROJECT NO. | ASS'Y. NO. | DATE |
|-------|-------------|------------|------|
| | | | |

USED ON

STOCK SIZE

MATERIAL WEIGHT PER PC.

TYPE & TEMPER

HEAT TREAT. SPEC.

FINISH & SPEC. NO.

TMC (Canada) LIMITED
OTTAWA ONTARIO
CABLE, INTERCONNECTING
RARB/VLRE-1

RPL
DRAWN
CHECKED
ELEC. DES. APP.
MECH. DES. APP.
FINAL APPROVAL

CA10446 ϕ