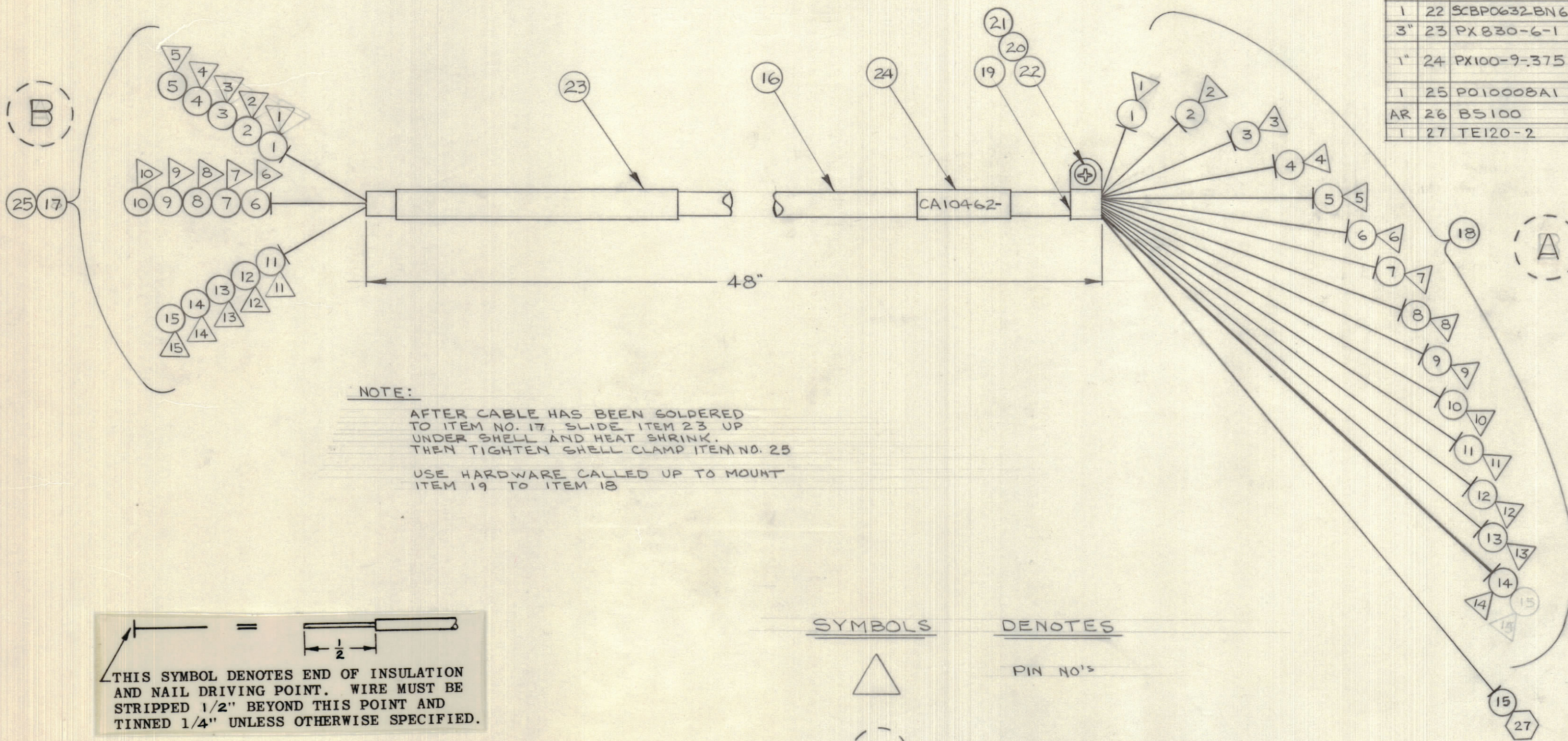


IF IT IS FOUND DESIRABLE TO CHANGE ANY TOLERANCE OR OTHER DETAIL SPECIFIED ON THIS DRAWING NOTIFY THE PURCHASER PROMPTLY.		DIMENSIONS IN INCHES UNLESS OTHERWISE SPECIFIED					
MAXIMUM ALLOWABLE TOLERANCES HAVE BEEN DETERMINED AND DEVIATIONS WILL BE CAUSE FOR REJECTION. REMOVE ALL BURRS AND SHARP EDGES.							
ISSUE	ITEM	CHANGED FROM	DATE	CN. NO.	DRAFTS	CHECKER	ENG. APP.
Ø		REL TO PROD.	13-7-66		RD		
A	27	ADDED	2-8-66		RD		

BKOUT (FROM) COMPONENT	BKOUT (TO) COMPONENT	REQ.	ITEM	PART NO.	DESCRIPTION	SYMBOL
A	TMI-1	B	PLI-1	AR 1	P/O ITEM #16	WIRE RED
A	TMI-2	B	PLI-2	2		ORANGE
A	TMI-3	B	PLI-3	3		GREEN
A	TMI-4	B	PLI-4	4		BLUE
A	TMI-5	B	PLI-5	5		WHITE
A	TMI-6	B	PLI-6	6		RED/BLACK
A	TMI-7	B	PLI-7	7		RED/WHITE
A	TMI-8	B	PLI-8	8		ORANGE/BLACK
A	TMI-9	B	PLI-9	9		GREEN/BLACK
A	TMI-10	B	PLI-10	10		GREEN/WHITE
A	TMI-11	B	PLI-11	11		BLUE/BLACK
A	TMI-12	B	PLI-12	12		BLUE/WHITE
A	TMI-13	B	PLI-13	13		WHITE/BLACK
A	TMI-14	B	PLI-14	14		BLACK/WHITE
A	TMI-14	B	PLI-15	15	P/O ITEM #16	WIRE BLACK
AR	16				CABLE	SPECIAL 15-CONDUCTOR CABLE
1	17				PL10006-3	PLUG, SUBMINIATURE, ROYAL-D
1	18				TMI05-14AL	TERMINAL BOARD, FANNING TYPE
1	19				CU102-3	CLAMP, CABLE
1	20				LW106MRN	WASHER, INTERNAL LOCK
1	21				NTH0632BNB	NUT, HEX.
1	22				SCBP0632BN6	SCREW, MACHINED
3"	23				PX830-6-1	SLEEVING, SHRINK
1"	24				PX100-9-375	SLEEVING, MARKED CA10462 C/W LATEST REVISION LETTER
1	25				PO10008A1	SHELL, JUNCTION
AR	26				BS100	BOLDER, SOFT
1	27				TE120-2	TERMINAL, SOLDERLESS



CA10462 Ø

TOLERANCES		SCALE: 1:1
ALL OTHERS	DEC. DIM. ± 1/8 FRAC. DIM. ± 1/8 ANGULAR DIM. ±	DRILL, PUNCH, COMMERCIAL STOCK SIZES AND MANUFACTURERS TOLERANCES ARE NOT INCLUDED.

AX10011	030/66	JULY 13/66
MODEL	PROJECT NO.	ASS'Y. NO.
		DATE

STOCK SIZE		TMC (Canada) LIMITED OTTAWA ONTARIO	
MATERIAL		CABLE, INTERCONNECTING	
WEIGHT PER PC.		RPL	
TYPE & TEMPER		DRAWN	ELEC. DES. APP. MECH. DES. APP.
HEAT TREAT. SPEC.		CHECKED	SIGNAL APPROVAL
FINISH & SPEC. NO.		LANGER CA10462 A	