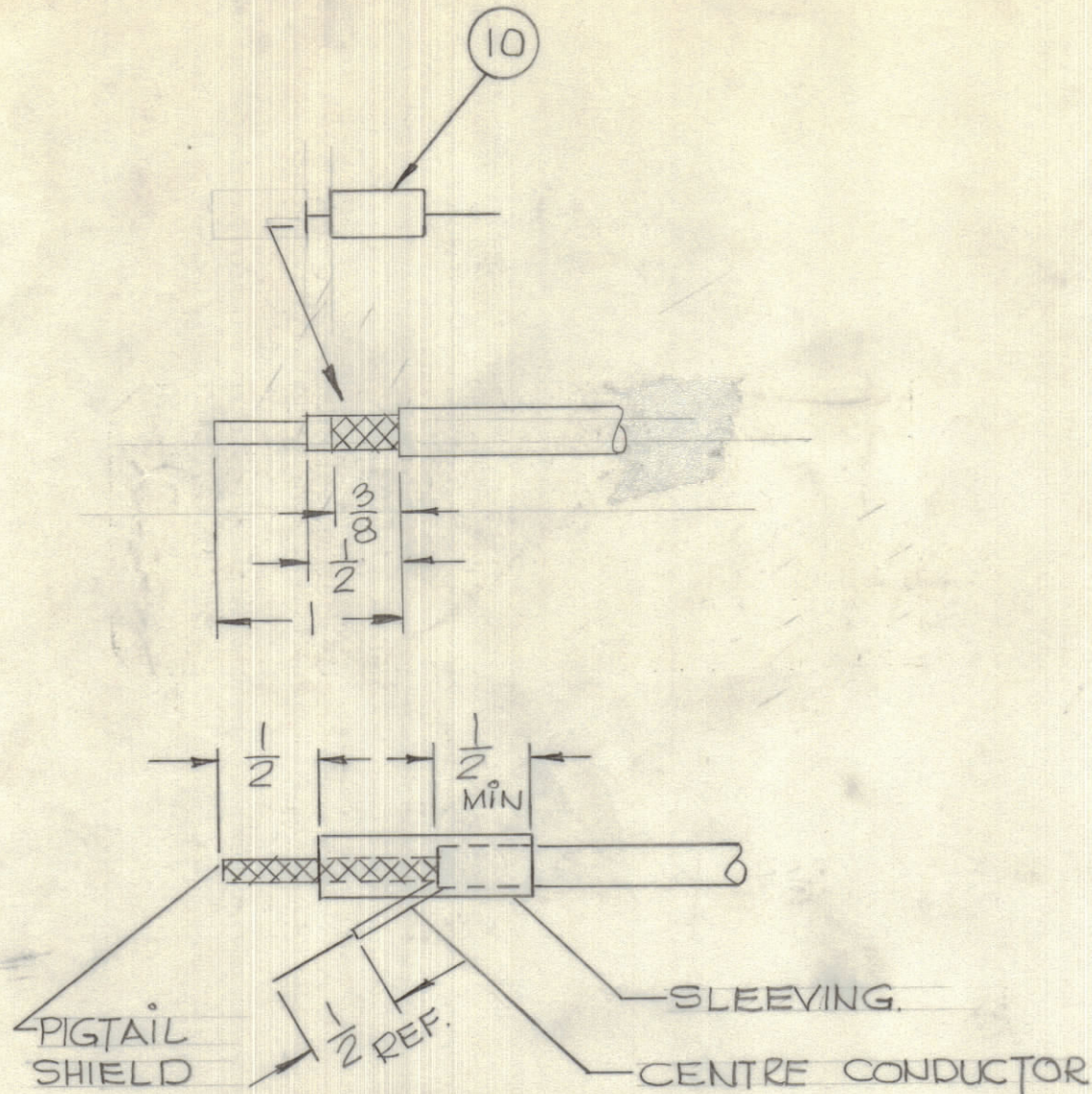
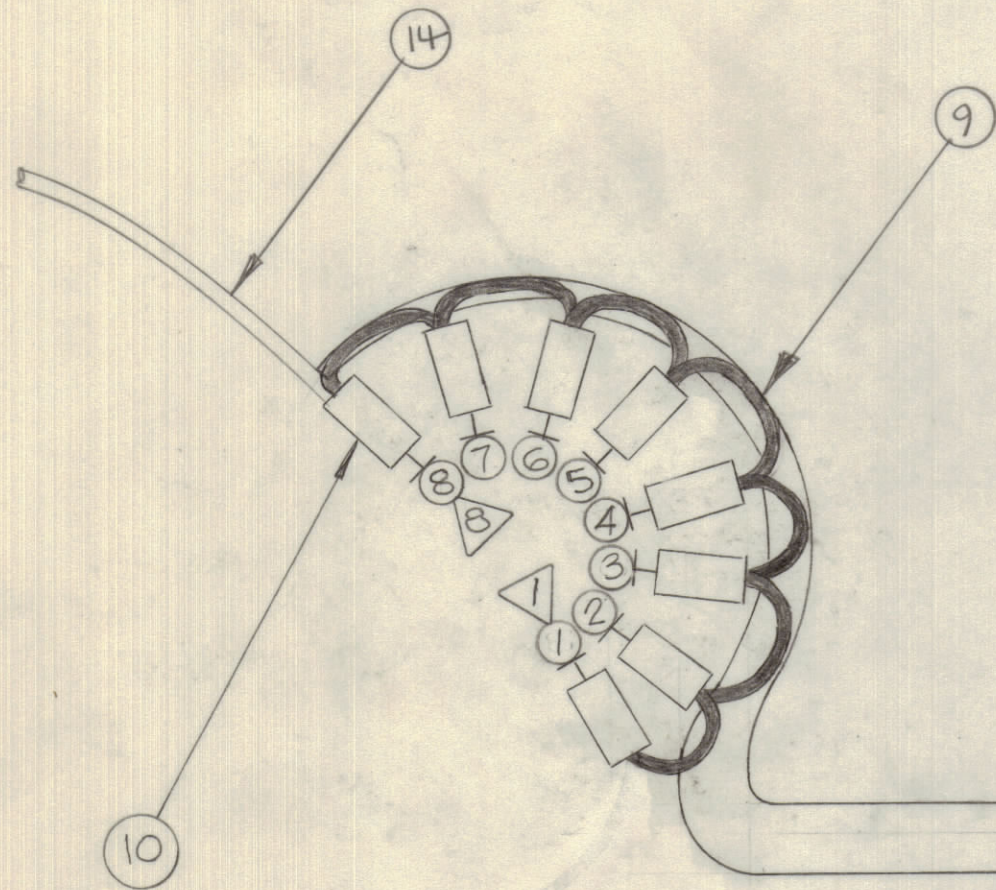


IF IT IS FOUND DESIRABLE TO CHANGE ANY TOLERANCE OR OTHER DETAIL SPECIFIED ON THIS DRAWING NOTIFY THE PURCHASER PROMPTLY.		DIMENSIONS IN INCHES UNLESS OTHERWISE SPECIFIED					
MAXIMUM ALLOWABLE TOLERANCES HAVE BEEN DETERMINED AND DEVIATIONS WILL BE CAUSE FOR REJECTION. REMOVE ALL BURRS AND SHARP EDGES.							
ISSUE	ITEM	CHANGED FROM	DATE	CN. NO.	DRAFTS	CHECKER	ENG. APP.
Ø		REL TO PROD	JUNE 12/68		RPL	JW	JW



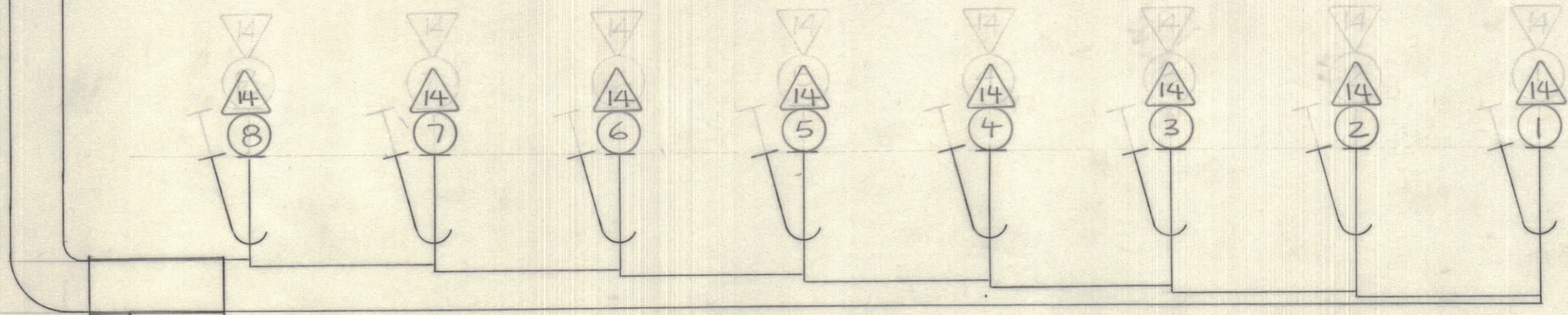
THE ABOVE SYMBOL DENOTES END OF SHIELD, WHICH SHOULD BE TERMINATED AS SHOWN, LEAVING EXCESS SHIELDING AS A PIGTAIL. TIN PIGTAIL 1/4 INCH.

REQ.	ITEM	PART NO.	DESCRIPTION	SYMBOL
1	RG 174/U		CABLE, COXIAL	
2				
3				
4				
5				
6				
7				
8	RG174/U		CABLE, COXIAL	
7	9	CA10519-1	CABLE, SINGLE WIRE	
8	10	CU-100IG-1	FERRULE, INSULATED	
1"	11	PX100-9-330	INSULATION SLEEVING, ELECT.	
AR	12	CU142-8	STRAP, CABLE ADJUSTABLE PLASTIC	
AR	13	BS-100	SOLDER, SOFT	
1	14	CA10519-2	CABLE, SINGLE WIRE	

SYMBOLS DENOTES:

- ITEM NO.'S
- PIN NO.'S

CA 10512 Ø



TOLERANCES		SCALE: 1:1
ALL OTHERS	DEC. DIM. ± .X = .08 FRAC. DIM. ± 1/64 .XX = .01 ANGULAR DIM. ± 0° 30' .XXX = .005	DRILL, PUNCH, COMMERCIAL STOCK SIZES AND MANUFACTURERS TOLERANCES ARE NOT INCLUDED.

SMR-5	OGI/68		MAR 5/68
MODEL	PROJECT NO.	ASSY. NO.	DATE
USED ON			

STOCK SIZE		TMC (Canada) LIMITED OTTAWA ONTARIO	
CABLE ASSEMBLY (IF #1)			
MATERIAL	WEIGHT PER PC.	DRAWN: <i>Sam Tom</i>	
TYPE & TEMPER		ELEC. DES. APP.:	MECH. DES. APP.:
HEAT TREAT. SPEC.		CHECKED:	FINAL APPROVAL:
FINISH & SPEC. NO.		CA 10512 Ø	