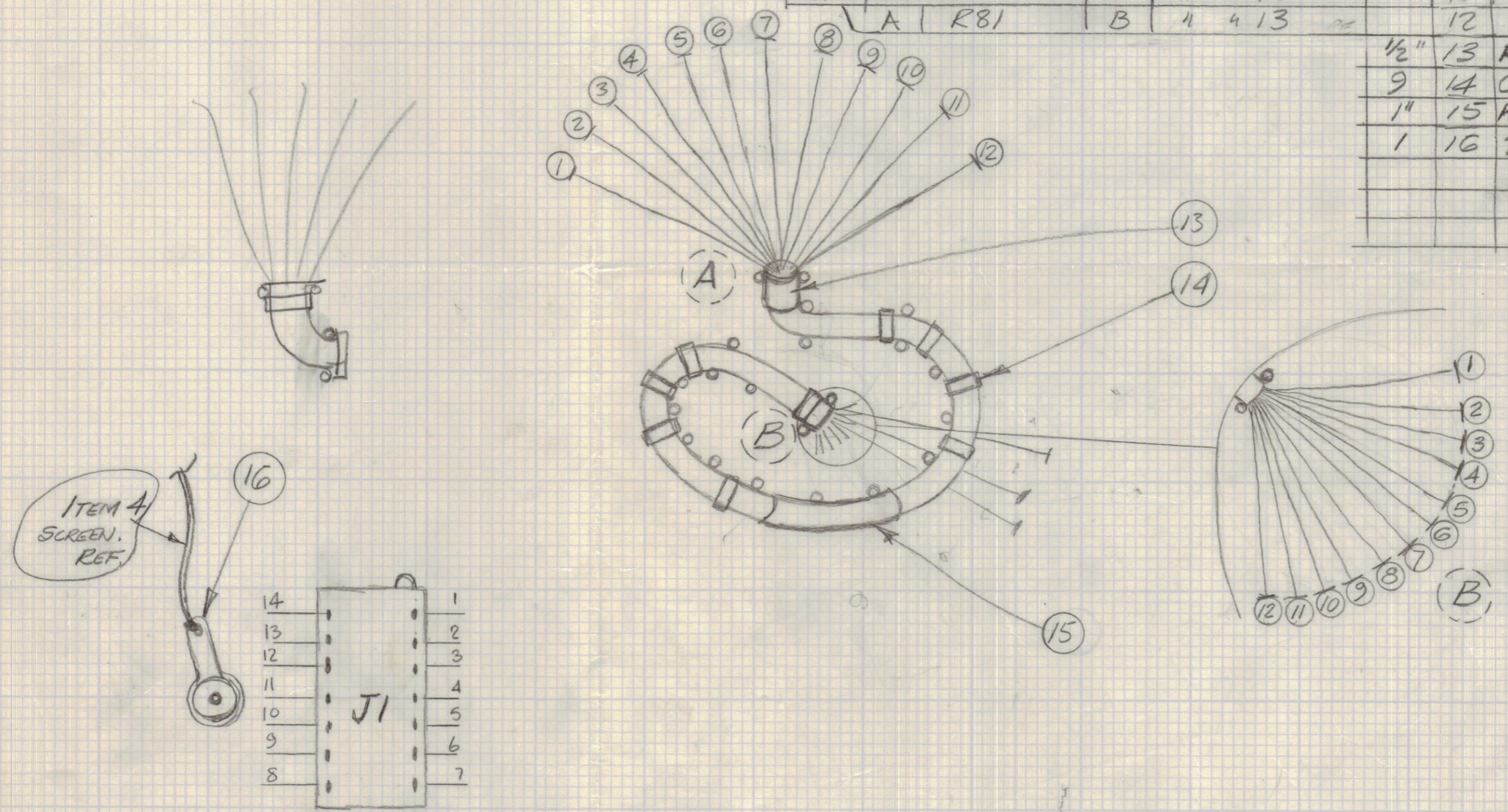


BREAKOUT	FROM COMPONENT	BREAKOUT	TO COMPONENT	REQ	ITEM	PART NO	DESCRIPTION
A	R105, R109	B	J1 PIN 1		1	WI140E26E2	WIRE ELEC INS.
A	C104	B	" " 2		2	WI140E26E7	" " "
A	CR101	B	" " 3		3	WI140E26E0	" " "
A	C107	B	" " 4		4	RG174U	CABLE, SCREEN, SINGLE.
A	GRD AT C105 & C106	B	ITEM 16				SCREEN OF CABLE ITEM 4.
A	R11	B	" " 6		5	WI140E26E9	WIRE ELEC INS.
A	R21	B	" " 7		6	"	" " "
A	R31	B	" " 8		7	"	" " "
A	R41	B	" " 9		8	"	" " "
A	R51	B	" " 10		9	"	" " "
A	R61	B	" " 11		10	"	" " "
A	R71	B	" " 12		11	"	" " "
A	R81	B	" " 13		12	"	" " "
					13	1/2" PX830-12-1	INS. SLEEVING ELEC SHANK.
					14	CU142-8	STRAP CABLE.
					15	PX100-9-166	MARKED CA10554 C/W LATEST REVISION LETTER.
					16	TE104-4	TERMINAL LOCKING



PIN ORIENTATION OF J1 VIEWED FROM WIRING POSN.

WIRING HARNESS

CA10554

replaced by Rev. A.