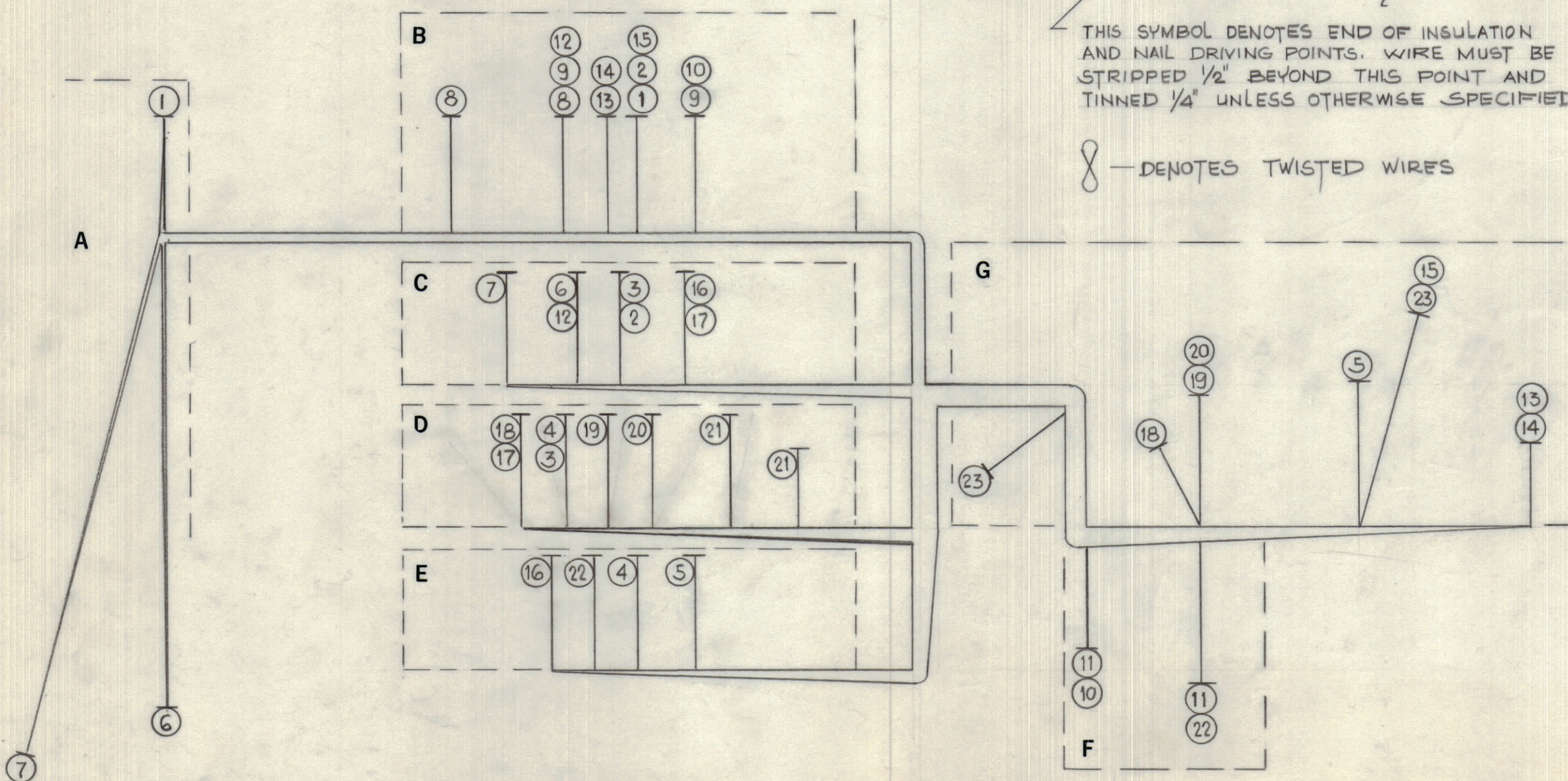


IF IT IS FOUND DESIRABLE TO CHANGE ANY TOLERANCE OR OTHER DETAIL SPECIFIED ON THIS DRAWING NOTIFY THE PURCHASER PROMPTLY.							DIMENSIONS IN INCHES UNLESS OTHERWISE SPECIFIED	
MAXIMUM ALLOWABLE TOLERANCES HAVE BEEN DETERMINED AND DEVIATIONS WILL BE CAUSE FOR REJECTION. REMOVE ALL BURRS AND SHARP EDGES.								
ISSUE	ITEM	CHANGED FROM	DATE	CN. NO.	DRAFTS	CHECKER	ENG. APP.	
0		REL TO PROD.	17 MAY 73	1235	JHM	SOW	SOW	

BREAK OUT FROM COMP		BREAK OUT FROM COMP		REQ.	ITEM	PART NO.	DESCRIPTION	SYMBOL	
A	FT1	B	J201-7		1	LWC22(7)U2	WIRE, ELECTRICAL INSULATED		
B	J201-6	C	J202-8		2				
C	J201-6	D	J203-10		3				
D	J203-11	E	J204-6		4				
E	J203-3	G	DS1-C		5	LWC22(7)U2			
B	TBI-1	C	J202-12		6	LWC26(7)U9		∞	
B	TBI-2	C	J202-14		7	LWC26(7)U9		∞	
B	J201-GND LUG	B	J201-11		8	MWC22(7)U0			
B	J201-10	B	J201-4		9				
B	J201-4	F	LS1 GND LUG		10				
F	LS1-GND LUG	F	SI-CH2		11	MWC22(7)U0			
B	J201-12	C	J202-10		12	LWC26(7)U5			
B	J201-9	G	R1-C		13	93		∞	
B	J201-8	G	R1-AW		14	90		∞	
B	J201-5	G	JG-C		15	U1			
C	J202-4	E	J204-10		16	U6			
C	J202-3	D	J203-12		17	U96			
D	J203-13	G	R2A-AW		18	95		∞	
D	J203-8	G	R2B-CW		19	94		∞	
D	J203-6	G	R2B-AC		20	LWC26(7)98			
D	J203-3	D	GND LUG		21	MWC22(7)U0			
E	J204-8	F	SI-CH1		22	LWC26(7)U4			
G	LS1	G	JG		23	LWC26(7)91	WIRE, ELECTRICAL INSULATED		
					1"	24	PX100-9-208	SLEEVING MARKED CA10678 C/W LATEST REVISION LETTER	
					25				
					26				
					AR	27	BS100	SOFT SOLDER	
					AR	28	CUI42-8	CABLE STRAP	



THIS SYMBOL DENOTES END OF INSULATION AND NAIL DRIVING POINTS. WIRE MUST BE STRIPPED 1/2" BEYOND THIS POINT AND TINNED 1/4" UNLESS OTHERWISE SPECIFIED.

∞ - DENOTES TWISTED WIRES

CA10678 ∅

TOLERANCES		SCALE: 1:1
ALL OTHERS	DEC. DIM. ± .05 FRAC. DIM. ± 1/64 ANGULAR DIM. ± 0°30'	DRILL, PUNCH, COMMERCIAL STOCK SIZES AND MANUFACTURERS TOLERANCES ARE NOT INCLUDED.

RCSR-1T	141/72	A11096	17 MAY 73
MODEL	PROJECT NO.	ASS'Y. NO.	DATE

STOCK SIZE		TMC (Canada) LIMITED OTTAWA ONTARIO	
MATERIAL		CABLE ASSEMBLY	
WEIGHT PER PC.		RCSR-1T	
TYPE & TEMPER		JHM	SOW
		DRAWN	ELEC. DES. APP.
		S. WITTEN	
HEAT TREAT. SPEC.		CHECKED	FINAL APPROVAL
FINISH & SPEC. NO.		CA10678 ∅	