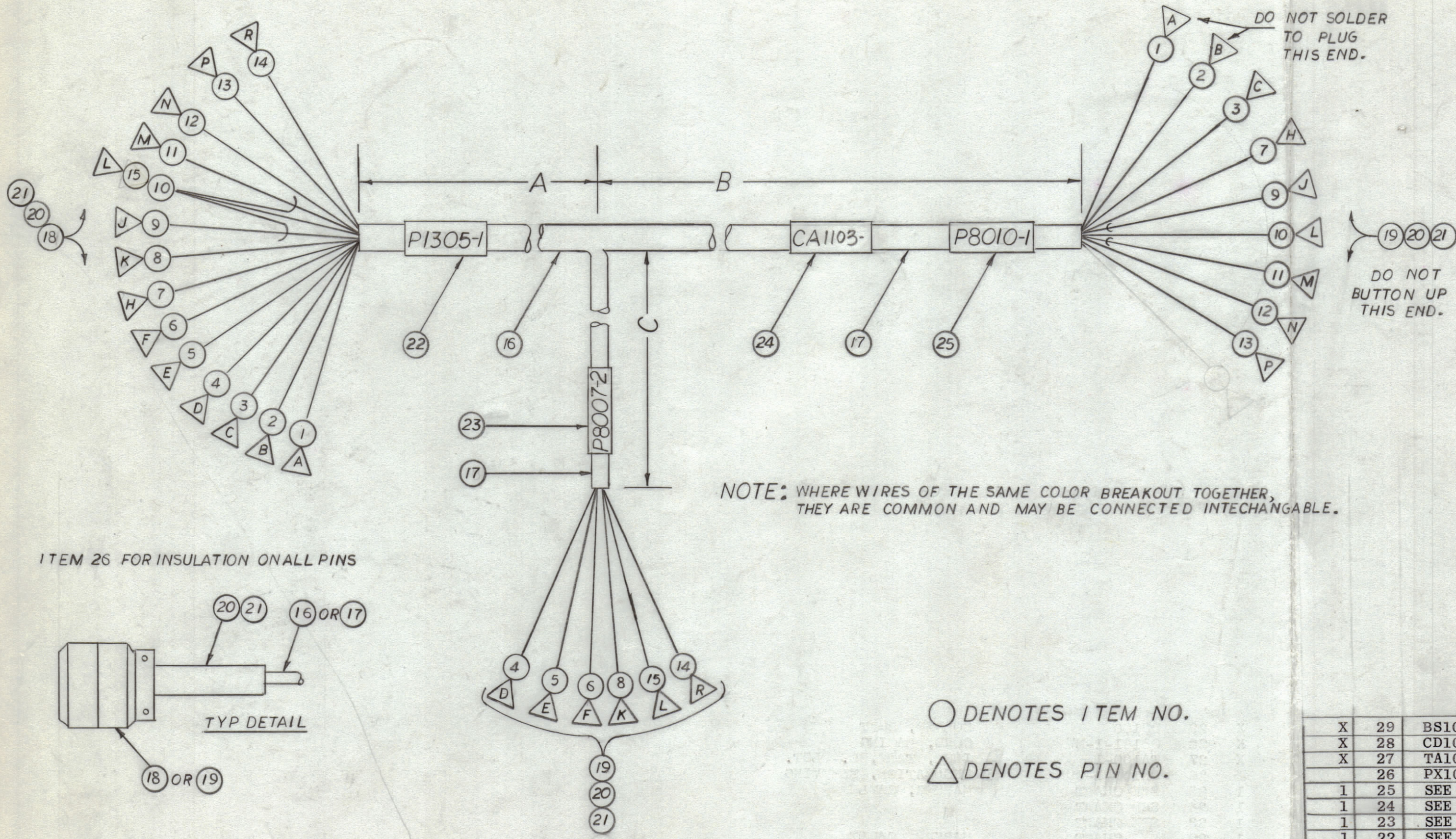
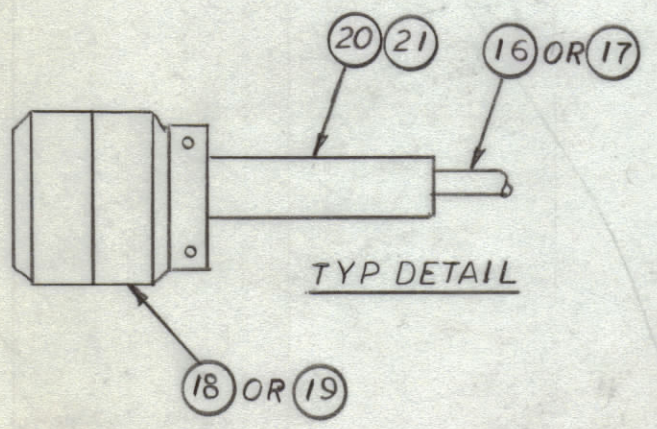


REVISIONS					
ZONE	SYM	DESCRIPTION	DATE	E.M.N. NO.	APPD
		ORIGINAL RELEASE FOR PRODUCTION	10/4/65		



ITEM 26 FOR INSULATION ON ALL PINS



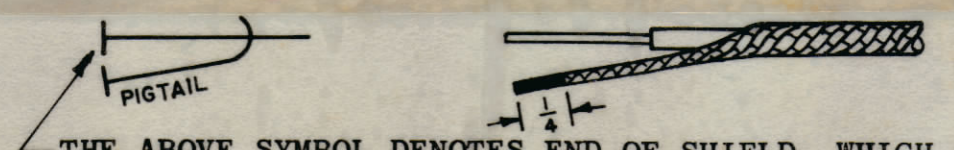
TMC P/N	DIM IN INCHES			ITEM 22	ITEM 23	ITEM 24	ITEM 25
	A	B	C				
CA1103-1	55	60	10 FT.	LA107-20-P1305-1	LA107-20-P8007-2	LA107-14-CA1103-1	LA107-20-P8010-1

REQ'D.	ITEM	PART NUMBER	DESCRIPTION	SYMBOL
X	29	BS100	SOLDER, SOFT	
X	28	CD101-1-MW	CORD, LACING	
X	27	TA100-1	INS., TAPE, EL.-PLST.	
	26	PX100-1-095	INSULATION, SLEEVING	
1	25	SEE CHART	MARKER, CABLE	
1	24	SEE CHART	" "	
1	23	SEE CHART	" "	
1	22	SEE CHART	MARKER, CABLE	
3	21	MS3420-12A	BUSHING, RUBBER	
3	20	MS3420-8A	BUSHING, RUBBER	
2	19	PL212-1	CONNECTOR, PLUG; MALE	
1	18	PL212-2	CONNECTOR, PLUG; FEMALE	
	17	PX100-1-263	INSULATION, SLEEVING	
	16	PX100-1-438	INSULATION, SLEEVING	
	15	MWC20 (7) U0		
	14	16 (19) U1		
	13	20 (7) U93		
	12	20 (7) U90		
	11	22 (7) SJ4		
	10	20 (7) U0		
	9	22 (7) SJ5		
	8	20 (7) U2		
	7	20 (7) U7		
	6	16 (19) U91		
	5	16 (19) U1		
	4	16 (19) U91		
	3	20 (7) U6		
	2	18 (19) U98		
1		MWC18 (19) U8	INSULATION SLEEVING	

UNLESS OTHERWISE SPECIFIED WIRES SHOULD BE PLACED IN CABLE IN NUMERICAL SEQUENCE AS THEY APPEAR IN ITEM COLUMN BY CATEGORY.

- ALL R.F. CABLES
- ALL SHIELDED CABLES
- ALL OTHERS

SPACE LACING APPROXIMATELY 3/4" APART.



THE ABOVE SYMBOL DENOTES END OF SHIELD, WHICH SHOULD BE TERMINATED AS SHOWN, LEAVING EXCESS SHIELDING AS A PIGTAIL. TIN PIGTAIL 1/4 INCH.

NOTES

DDR-5L		
QTY./UNIT	MODEL USED ON	ASS'Y. NO.
SCALE	A	

THE CONTENTS OF THIS DRAWING ARE THE EXCLUSIVE PROPERTY OF THE TECHNICAL MATERIEL CORP. ITS UNAUTHORIZED USE OR REPRODUCTION IN WHOLE OR IN PART IS STRICTLY FORBIDDEN.

STURMER LIST OF MATERIAL			
MATERIAL	THE TECHNICAL MATERIEL CORP. MAMARONECK, NEW YORK		
FINISH	TITLE		WIRING HARNESS, BR. HFR
UNLESS OTHERWISE SPECIFIED DIMENSIONS ARE IN INCHES AND INCLUDE CHEMICALLY APPLIED OR PLATED FINISHES	DRAWN M.H. STURMER	DATE 4-29-65	FINAL APPROVAL DATE 10/4/65
DECIMALS .X ± .05 .XX ± .01 .XXX ± .005	CHECKED [Signature]	DATE 5-21-65	DATE 10/4/65
FRACTIONS ± 1/64 ANGLES ± 0° 30'	ELECT. DES. [Signature]	DATE 10/4/65	DATE [Signature]
TOLERANCES	MECH. DES. [Signature]	DATE [Signature]	DATE [Signature]
		SHEET	REV. LTR.