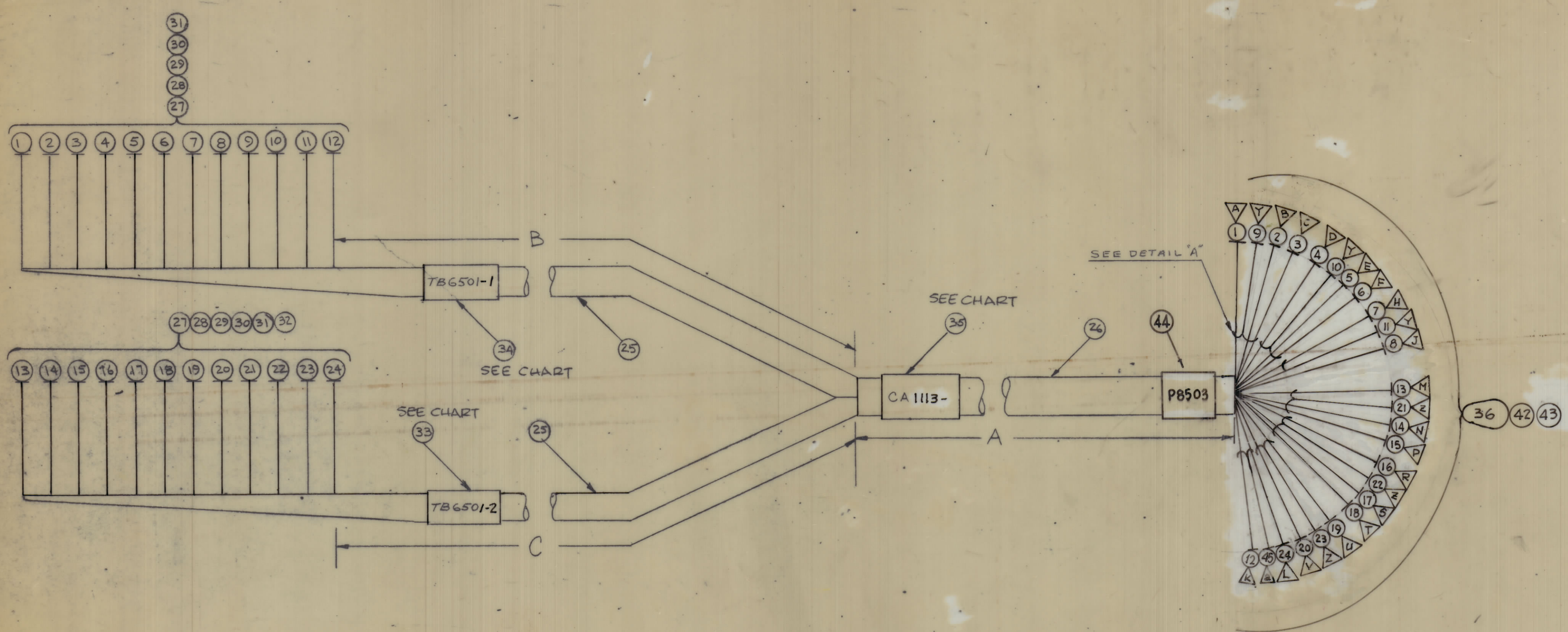


REVISIONS						
ZONE	SYM	DESCRIPTION	DATE	E.M.N. NO.	DRAFT	APPD.
X		EXPERIMENTAL RELEASE	5-12-65	-H	G.D.L.	
XI		ITEM B & C ADDED. ITEM # 12 RELOCATED. ON CHART B WAS 104, C WAS 80, IT 98 AND IT 34 REVERSE SIDE.			JC	
		ORIGINAL RELEASE PRODUCTION			AVV	

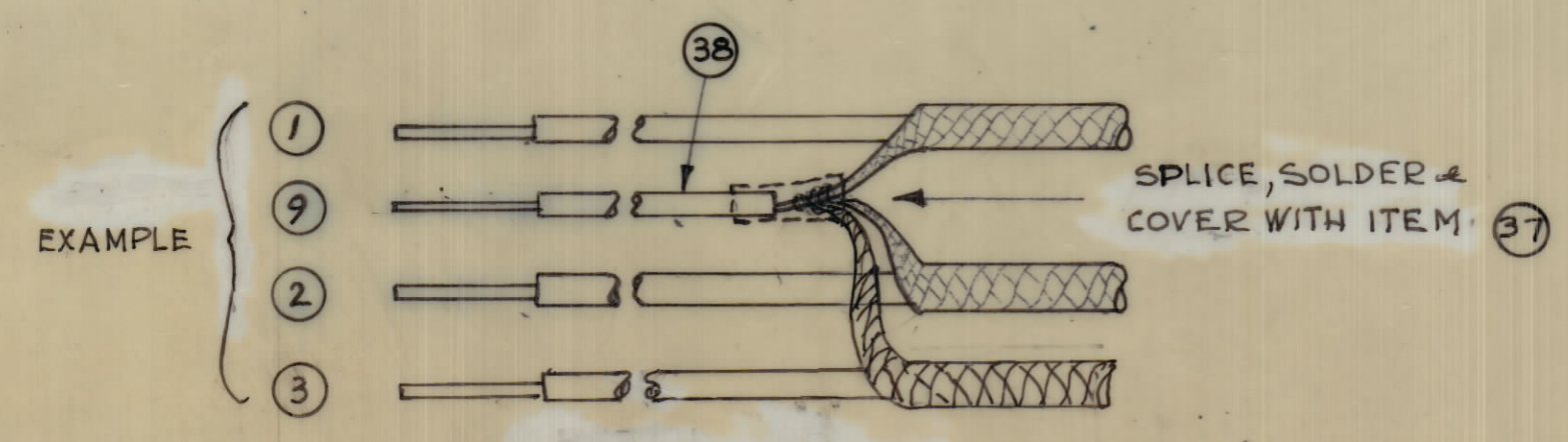


TMC PART No.	DIM. IN INCHES			ITEM 33	ITEM 34	ITEM 35	ITEM 44
	A	B	C				
CA 1113-1	60	94	70	LA107-18-TB6501-2	LA107-18-TB6501-1	LA107-20-CA1113-1	LA107-20-P8503

REQ'D.	ITEM	PART NUMBER	DESCRIPTION	SYMBOL
X	45		SHIELDS OF ITEMS 12 & 24	
1	44	SEE CHART	SLV. MARKER, CABLE	
1	43	MS 3420-12A	BUSHING, RUBBER	
1	42	MS 3420-8A	BUSHING, RUBBER	
X	41	BS100	SOLDER, SOFT	
X	40	TA 100-1	INS TAPE	
X	39	CD101-1-MW	CORD, NYLON, LACING	
	38	PX100-1-095	INS. SLVG	
4"	37	PX830-8-1	INS. SLVG - SHEINK	
1	36	PL 212-4	CONN. ELEC. FEMALE (24 PIN)	
1	35	SEE CHART	SLV. MARKER, CBL	
1	34	SEE CHART		
1	33	SEE CHART	SLV. MARKER, CBL	
2	32	NTH0632BN8	NUT, PLN, HEX	
2	31	FW06HBN	WASHER, FLAT	
2	30	LWE06MRN	WASHER, LK, EXT	
2	29	SCBPO632BN7	SCREW, MACH	
2	28	CU102-4	CLAMP, LOOP	
2	27	TM105-12AL	TERM. BD-FNG	
	26	PX100-1-438	INS SLVG	
	25	PX100-1-315	INS SLVG	
	24	MWC 24 (7) SJ 90	CBL, SP, SHLD/JKT.	
	23	SHIELDS OF ITEMS 19, 20		
	22	SHIELDS OF ITEM 16, 17, 4, 18		
	21	SHIELDS OF ITEMS 13, 14, 15		
	20	MWC 24 (7) SJ 98	CBL, SP, SHLD/JKT	
	19	97		
	18	96		
	17	95		
	16	94		
	15	93		
	14	92		
	13	91		
	12	MWC 24 (7) SJ 9	CBL, SP, SHLD/JKT	
	11	SHIELDS OF ITEMS 7, 8		
	10	SHIELDS OF ITEMS 4, 5, 6		
	9	SHIELDS OF ITEMS 1, 2, 3		
	8	MWC 24 (7) SJ 8	CBL, SP, SHLD/JKT	
	7	7		
	6	6		
	5	5		
	4	4		
	3	3		
	2	2		
	1	MWC 24 (7) SJ 1	CBL, SP, SHLD/JKT	

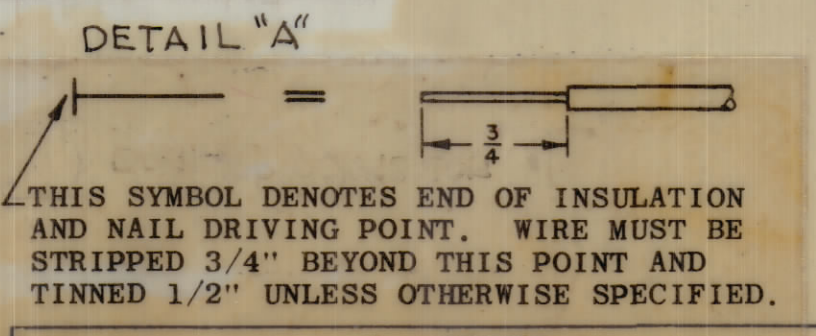
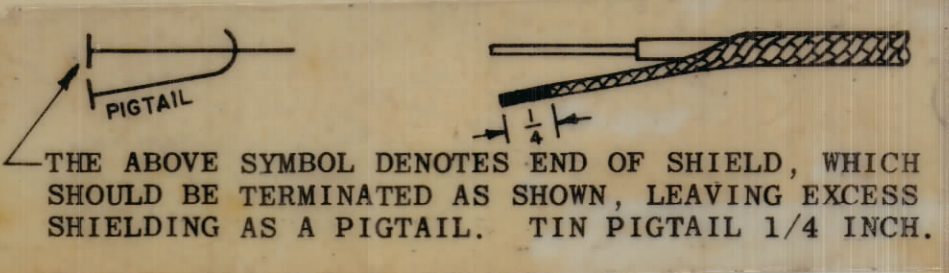
CA 1113-1

- SYMBOL DENOTES
- ITEM No's
  - ▽ PIN No's
  - CONNECTOR No's



UNLESS OTHERWISE SPECIFIED WIRES SHOULD BE PLACED IN CABLE IN NUMERICAL SEQUENCE AS THEY APPEAR IN ITEM COLUMN BY CATEGORY.

- ALL R.F. CABLES
- ALL SHIELDED CABLES
- ALL OTHERS SPACE LACING APPROXIMATELY 3/4" APART.



NOTES

1	DDRE-5M	
1	DDR-5L	
QTY./UNIT	MODEL USED ON	ASSY. NO.
SCALE 1:1	CODE A	

STURMER LIST OF MATERIAL			
MATERIAL	FINISH	TITLE	
		THE TECHNICAL MATERIEL CORP. MAMARONECK, NEW YORK	
		WIRING HARNESS, BRANCHED	
UNLESS OTHERWISE SPECIFIED DIMENSIONS ARE IN INCHES AND INCLUDE CHEMICALLY APPLIED OR PLATED FINISHES	DRAWN G.D.L.	DATE 5-11-65	FINAL CHECKED BY [Signature]
DECIMALS ± .05	CHECKED [Signature]	DATE 5/17/65	
FRACTIONS ± 1/64	ELECT. DES. [Signature]	DATE 7-16-65	
ANGLES ± 0° 30'	MECH. DES. [Signature]		
			CA 1113-1