

REVISIONS							
ZONE	SYM	DESCRIPTION	DATE	E.M.N. NO.	DRAFT	CHKD	APPD
X	1	ITEM 9 WAS U7, ITEM 12 WAS 1 1/16 LONG	5-12-65	X 1	SRG	UA	aa
	Ø	ORIGINAL RELEASE FOR PRODUCTION	3-14-66	Ø	HAA		file

THIS SYMBOL DENOTES END OF INSULATION AND NAIL DRIVING POINT. WIRE MUST BE STRIPPED 3/4" BEYOND THIS POINT AND TINNED 1/2" UNLESS OTHERWISE SPECIFIED.

PIGTAIL

THE ABOVE SYMBOL DENOTES END OF SHIELD, WHICH SHOULD BE TERMINATED AS SHOWN, LEAVING EXCESS SHIELDING AS A PIGTAIL. TIN PIGTAIL 1/4 INCH.

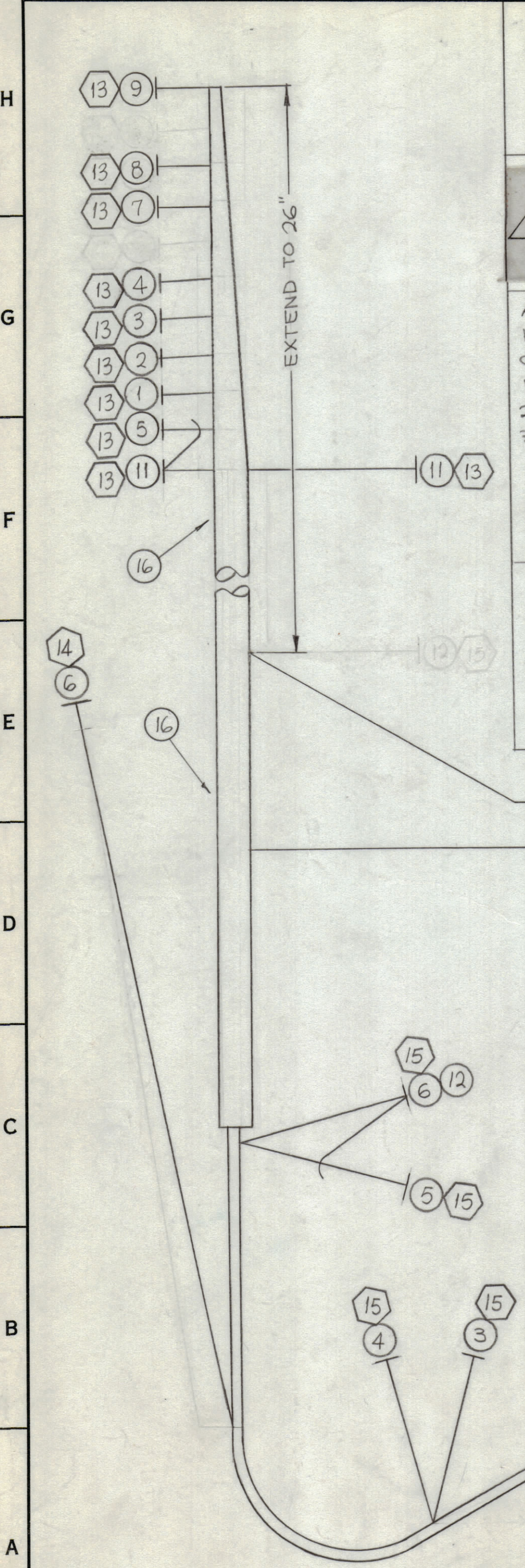
ALL WIRES SHOULD BE PLACED IN HARNESS AS THEY APPEAR IN ITEM COLUMN BY CATEGORY

1~ ALL RF CABLES
2~ ALL SHIELDED CABLES
3~ ALL OTHERS

SPACE LACING APPROXIMATELY 3/4" APART.

SYMBOL - DENOTES

○ = ITEM NO'S
⬡ = LUG NO'S



CA1120

X	18	BS100	SOLDER TIN ALLOY		
X	17	CD101-1MW	CORD, LACING		
X	16	PX100-1-500	INSULATION SLEEVING, ELECT.		
9	15	TE156-32 953	TERM. LUG INS.		
1	14	TE156-32 951	TERM. LUG INS.		
10	13	TE120-2	TERM. LUG SPADE		
	12	MNC22(7)U0	M1004	M1003 -	
	11	MNC22(7)U0	GND	TB901 #1	
	10	MNC22(7)U7	M1000 +	T1000	
	9	MNC22(7)U9	T1001	TB901 #11	
	8	HWC16(19)U9	M1001 +	TB901 #9	
	7	HWC16(19)U2	M1001 -	TB901 #8	
	6	MNC22(7)U0	M1003 -	GND	
	5	MNC22(7)SJ9	M1003 +	TB901 #2	
	4	MNC16(19)U94	M1002 -	TB901 #6	
	3	MNC16(19)U3	M1002 +	TB901 #5	
	2	MNC22(7)U4	M1000 -	TB901 #4	
	1	MNC22(7)U7	M1000 +	TB901 #3	

REQ'D.	ITEM	PART NUMBER	FROM	TO	SYMBOL
F. BUDETTI LIST OF MATERIAL					
MATERIAL			THE TECHNICAL MATERIEL CORP. MAMARONECK, NEW YORK		
FINISH			TITLE CABLE, METER BOX (P.A.)		
DRAWN		SRG	DATE	4-30-65	FINAL APPROVAL
CHECKED		aa	DATE	3-9-66	DATE
ELECT. DES.		aa	DATE	3-14-66	CA 1120
MECH. DES.			DATE		REV. LTR.

Q'TY./UNIT	MODEL USED ON	ASS'Y. NO.
SCALE 1:1	CODE A	

UNLESS OTHERWISE SPECIFIED DIMENSIONS ARE IN INCHES AND INCLUDE CHEMICALLY APPLIED OR PLATED FINISHES

DECIMALS	FRACTIONS
.X ± .05	± 1/64
.XX ± .01	ANGLES ± 0° 30'
.XXX ± .005	

NOTES

THE CONTENTS OF THIS DRAWING ARE THE EXCLUSIVE PROPERTY OF THE TECHNICAL MATERIEL CORP. ITS UNAUTHORIZED USE OR REPRODUCTION IN WHOLE OR IN PART IS STRICTLY FORBIDDEN.