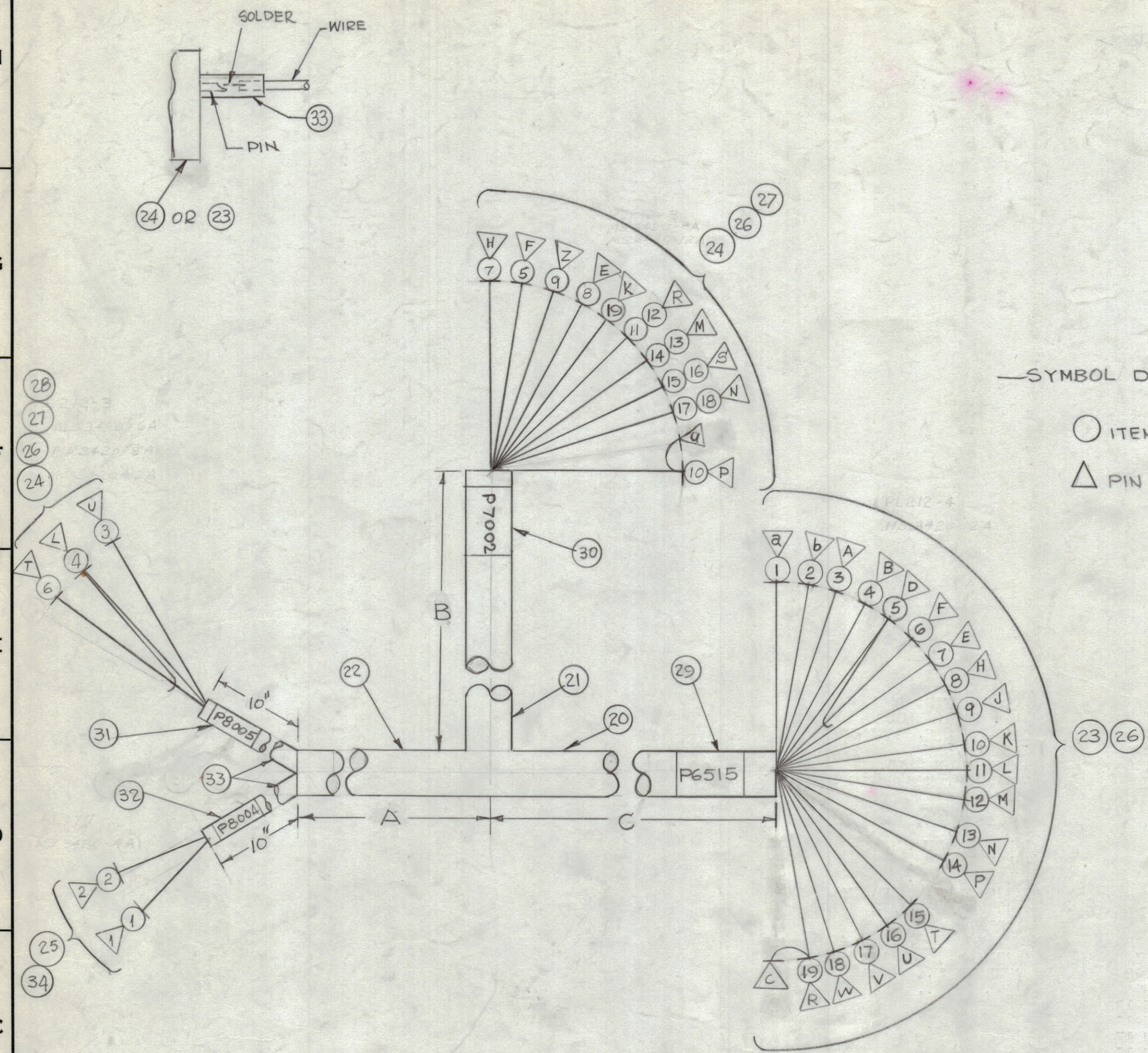
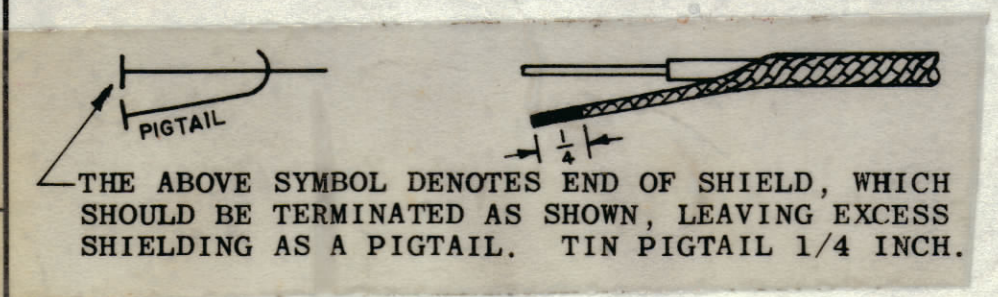


REVISIONS							
ZONE	SYM	DESCRIPTION	DATE	E.M.N. NO.	DRAFT	CHKD	APPD
	Ø	ORIGINAL RELEASE FOR PRODUCTION	10/13/65				
A		IT, 24 CONN. PIN NO. U WAS C	10/13/65	15348			



—SYMBOL DENOTES—
 ○ ITEM NOS.
 △ PIN NOS.

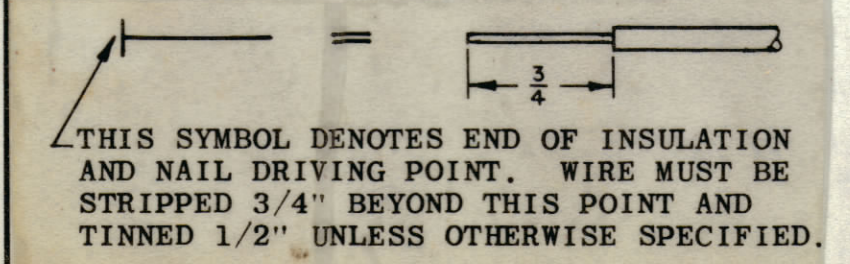
TMC PT/No	DIMENSION			ITEM 29	ITEM 30	ITEM 31	ITEM 32
	A	B	C				
CA1147-1	35	38	66	LA107-20-P6515	LA107-20-P7002	LA107-20-P8005	LA107-14-P8004



UNLESS OTHERWISE SPECIFIED WIRES SHOULD BE PLACED IN CABLE IN NUMERICAL SEQUENCE AS THEY APPEAR IN ITEM COLUMN BY CATEGORY.

- ALL R.F. CABLES
- ALL SHIELDED CABLES
- ALL OTHERS

SPACE LACING APPROXIMATELY 3/4" APART.



NOTES

REQ'D.	ITEM	PART NUMBER	DESCRIPTION	SYMBOL
X	37	BS100	SOLDER, TIN ALLOY	
X	36	TA100-1	INS. TAPE, EIGL	
X	35	CD101-1MW	CORD, NYLON, LACING	
1	34	MS3420-4A	BUSHING, RUB.	
	33	PX100-1-148	INSULATION SLVG.	
1	32	SEE CHART	SLEEVING, MARKER, CBL	
1	31	↑	↑	
1	30	↑	↑	
1	29	SEE CHART	SLEEVING, MARKER, CBL	
1	28	MS3420-6A	BUSHING, RUB.	
2	27	MS3420-8A	BUSHING, RUB.	
3	26	MS3420-12A	BUSHING, RUB.	
1	25	PL177	CONNECTORS, PLUG, MALE, AC	
2	24	PL212-3	CONNECTORS, PL, MALE	
1	23	PL212-4	CONNECTOR, PL, FEMALE	
	22	PX100-1-208	INSULATION, SLVG	
	21	PX100-1-375	INSULATION, SLVG	
	20	PX100-1-500	INSULATION, SLVG.	
	19	MWC20(7)U2	WIRE, ELEC., INS.	
	18	↑	U918	
	17	↑	U918	
	16	↑	U917	
	15	↑	U916	
	14	↑	U915	
	13	↑	U914	
	12	↑	U913	
	11	↑	U912	
	10	↑	U0	
	9	↑	U8	
	8	↑	U8	
	7	MWC20(7)U7	WIRE, ELEC., INS.	
	6	MWC22(7)SJ6	CABLE, SP, SHLD/JKT	
	5	MWC20(7)U98	WIRE, ELEC., INS.	
	4	↑	U91	
	3	↑	U1	
	2	↑	U90	
	1	MWC20(7)U9	WIRE, ELEC., INS.	

STURMED LIST OF MATERIAL			
MATERIAL	THE TECHNICAL MATERIEL CORP. MAMARONECK, NEW YORK		
FINISH	TITLE WIRING HARNESS BRANCHED		
UNLESS OTHERWISE SPECIFIED DIMENSIONS ARE IN INCHES AND INCLUDE CHEMICALLY APPLIED OR PLATED FINISHES	DRAWN D. VENEZIAN	DATE 9/13/65	FINAL APPROVAL [Signature]
DECIMALS .X ± .05 .XX ± .01 .XXX ± .005	CHECKED [Signature]	DATE 10/6/65	DATE 10/4/65
FRACTIONS ± 1/64 ANGLES ± 0° 30'	ELECT. DES. [Signature]	DATE 10/1/65	DATE 10/4/65
TOLERANCES	MECH. DES. [Signature]	DATE	DATE
THE CONTENTS OF THIS DRAWING ARE THE EXCLUSIVE PROPERTY OF THE TECHNICAL MATERIEL CORP. ITS UNAUTHORIZED USE OR REPRODUCTION IN WHOLE OR IN PART IS STRICTLY FORBIDDEN.	SHEET CA1147-A		
	REV. LTR.		

CA1147 A