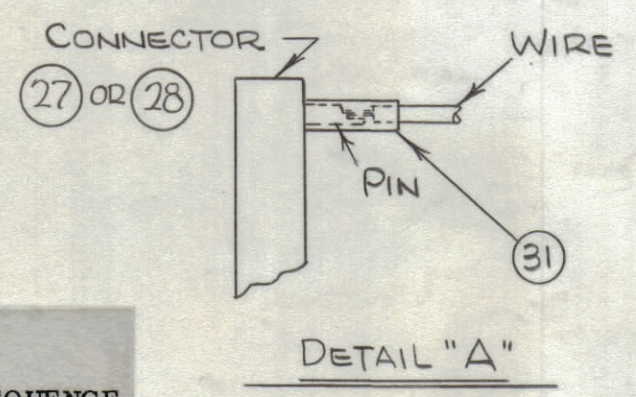
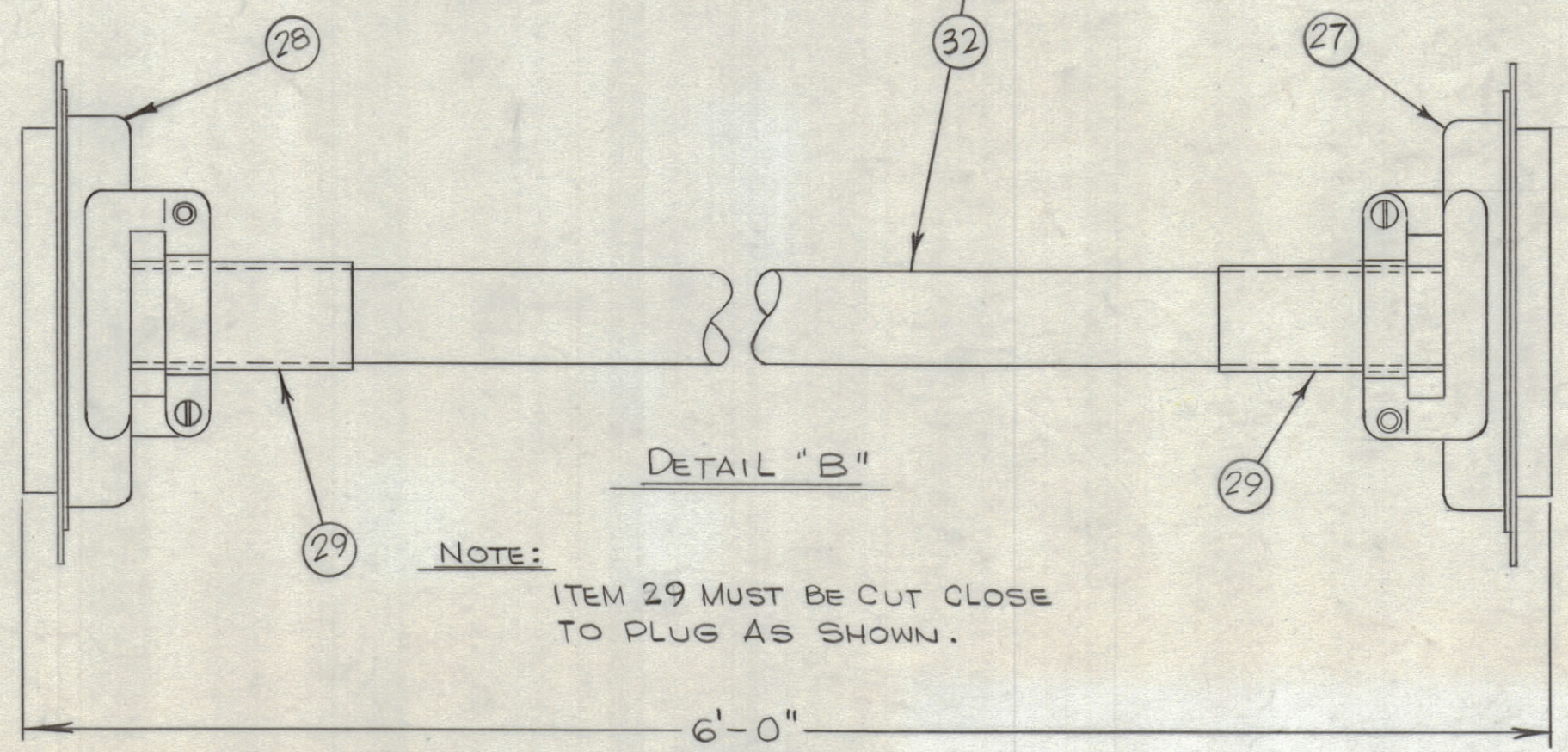
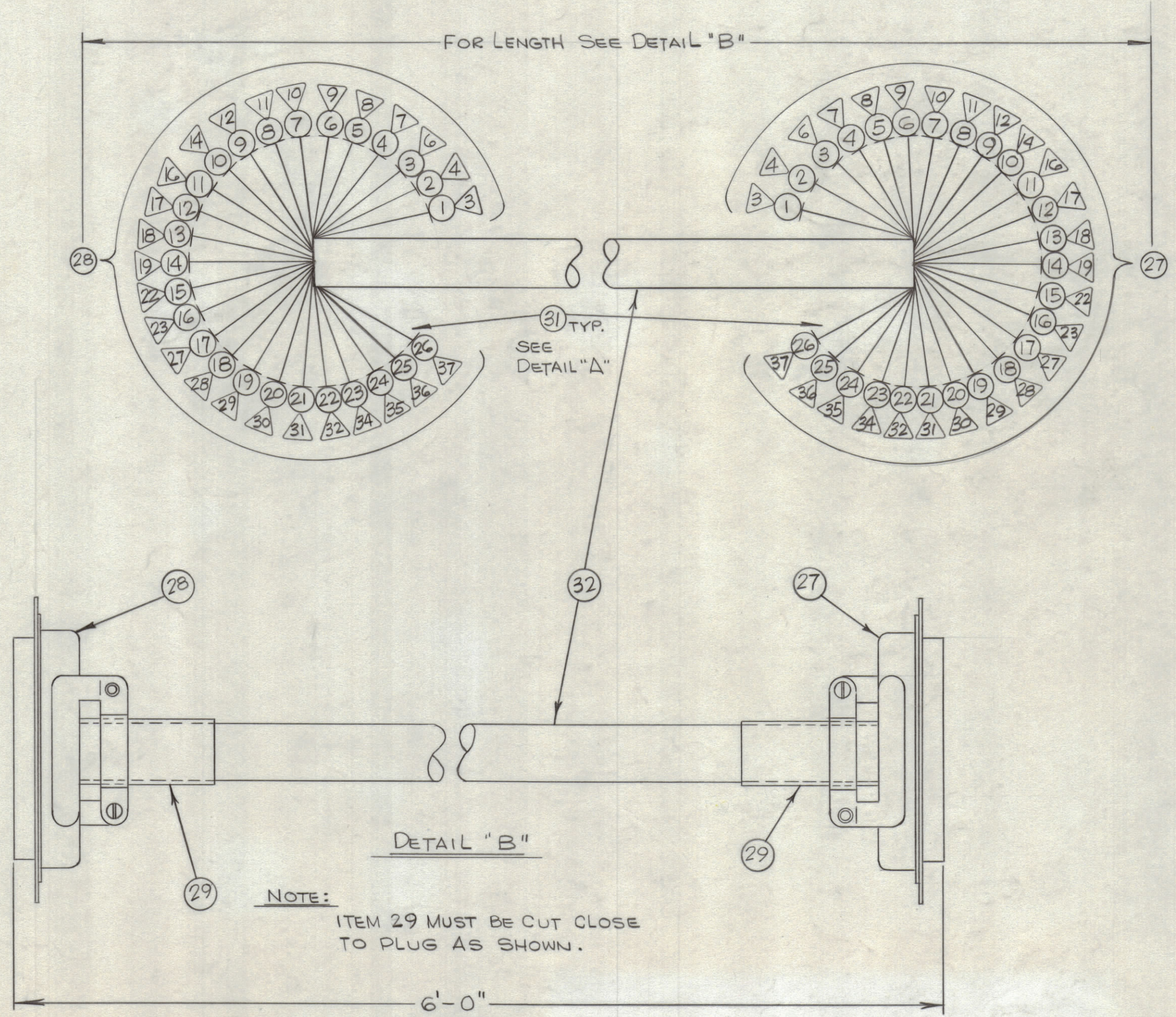


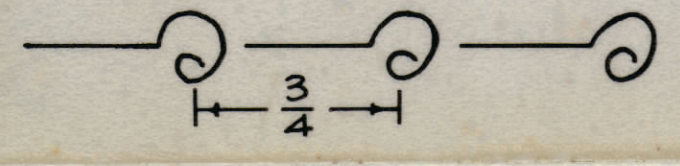
REVISIONS							
ZONE	SYM	DESCRIPTION	DATE	E.M.N. NO.	DRAFT	CHKD	APPD
XI		ON B/M ITEM 30 WAS CD101-3MW (ERROR), ITEM 32 WAS PX100-1-500	9/8/65	-A-	JC		
		ORIGINAL RELEASE FOR PRODUCTION	9/8/65	-A-	JC	FM	



THIS SYMBOL DENOTES END OF INSULATION AND NAIL DRIVING POINT. WIRE MUST BE STRIPPED 3/4" BEYOND THIS POINT

SYMBOL DENOTES  
 ○ = ITEM NOS.  
 △ = PIN NOS.

UNLESS OTHERWISE SPECIFIED WIRES SHOULD BE PLACED IN CABLE IN NUMERICAL SEQUENCE AS THEY APPEAR IN ITEM COLUMN BY CATEGORY.  
 1. ALL R.F. CABLES  
 2. ALL SHIELDED CABLES  
 3. ALL OTHERS  
 SPACE LACING APPROXIMATELY 3/4" APART.



NOTES

RTDA-1		
Q'TY./UNIT	MODEL USED ON	ASS'Y. NO.
SCALE	CODE	

THE CONTENTS OF THIS DRAWING ARE THE EXCLUSIVE PROPERTY OF THE TECHNICAL MATERIEL CORP. ITS UNAUTHORIZED USE OR REPRODUCTION IN WHOLE OR IN PART IS STRICTLY FORBIDDEN.

X	32	PX100-1-375	INS SLEEVING
X	31	PX100-1-085	INS SLEEVING
X	30	CD101-1MW	CORD, NYLON, LACING
2	29	MS3420-12A	BUSHING, RUBBER
1	28	JJ310-3H	CONNECTOR, RECP, FML - 37 PIN
1	27	JJ313-3H	CONNECTOR, RECP, ML - 37 PIN
	26	MWC22(7)U922	WIRE, ELECTRICAL, INS
	25		917
	24		916
	23		915
	22		914
	21		913
	20		912
	19		911
	18		98
	17		97
	16		96
	15		95
	14		94
	13		93
	12		92
	11		91
	10		90
	9		9
	8		8
	7		7
	6		6
	5		5
	4		4
	3		3
	2		2
1		MWC22(7)U1	WIRE, ELECTRICAL, INS

REQ'D.	ITEM	PART NUMBER	DESCRIPTION	SYMBOL
EATON LIST OF MATERIAL				
MATERIAL			THE TECHNICAL MATERIEL CORP. MAMARONECK, NEW YORK	
FINISH			TITLE CABLE, ASS'Y., S/P	
UNLESS OTHERWISE SPECIFIED DIMENSIONS ARE IN INCHES AND INCLUDE CHEMICALLY APPLIED OR PLATED FINISHES		DRAWN H. AUSTIN DATE 9-3-65 CHECKED DATE 9/7/65 ELECT. DES. DATE MECH. DES. DATE		
DECIMALS .X ± .05 .XX ± .01 .XXX ± .005	TOLERANCES	FRACTIONS ± 1/64 ANGLES ± 0° 30'	FINAL APPROVAL DATE SHEET	

CA1171

REV. LTR.