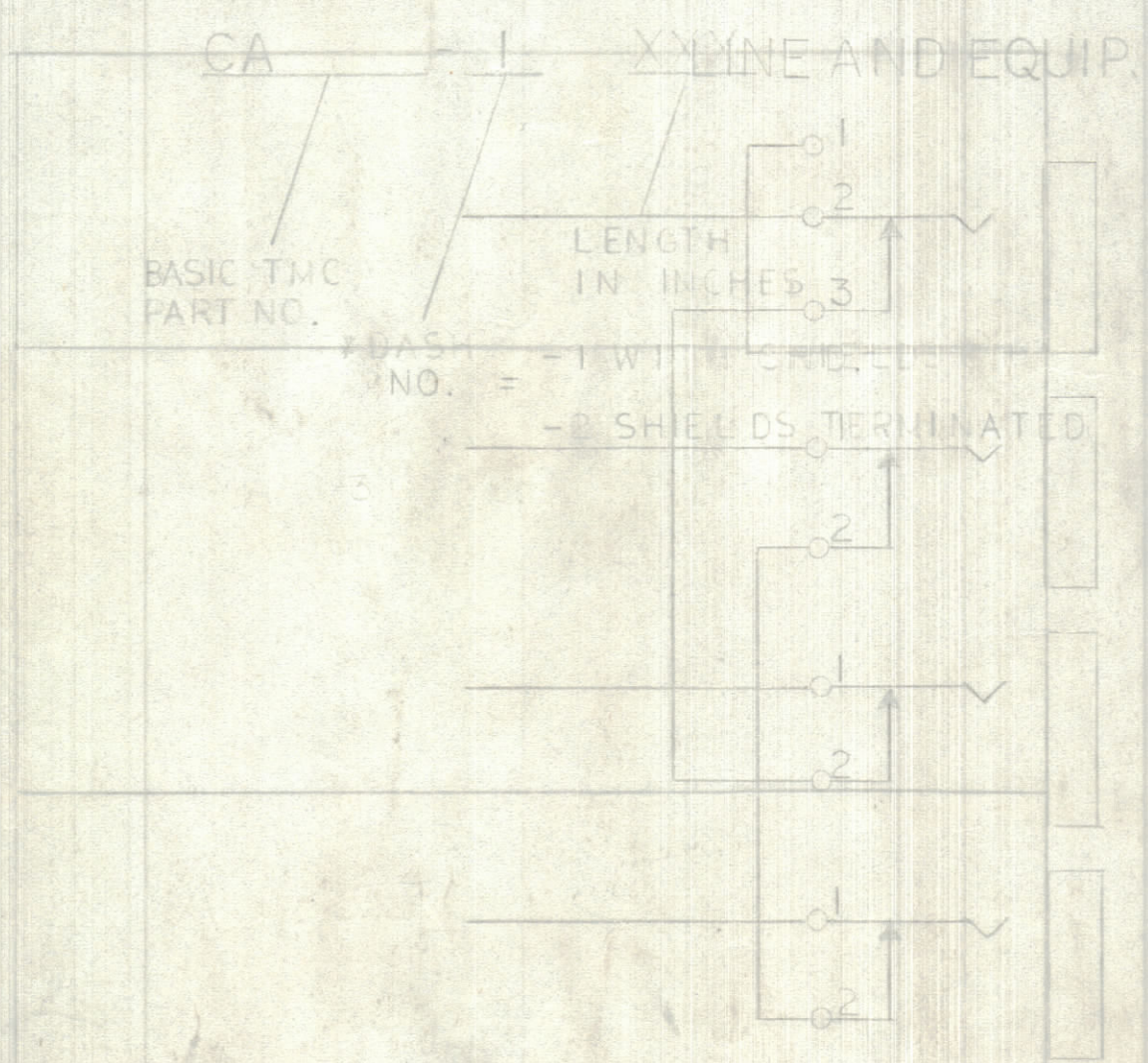
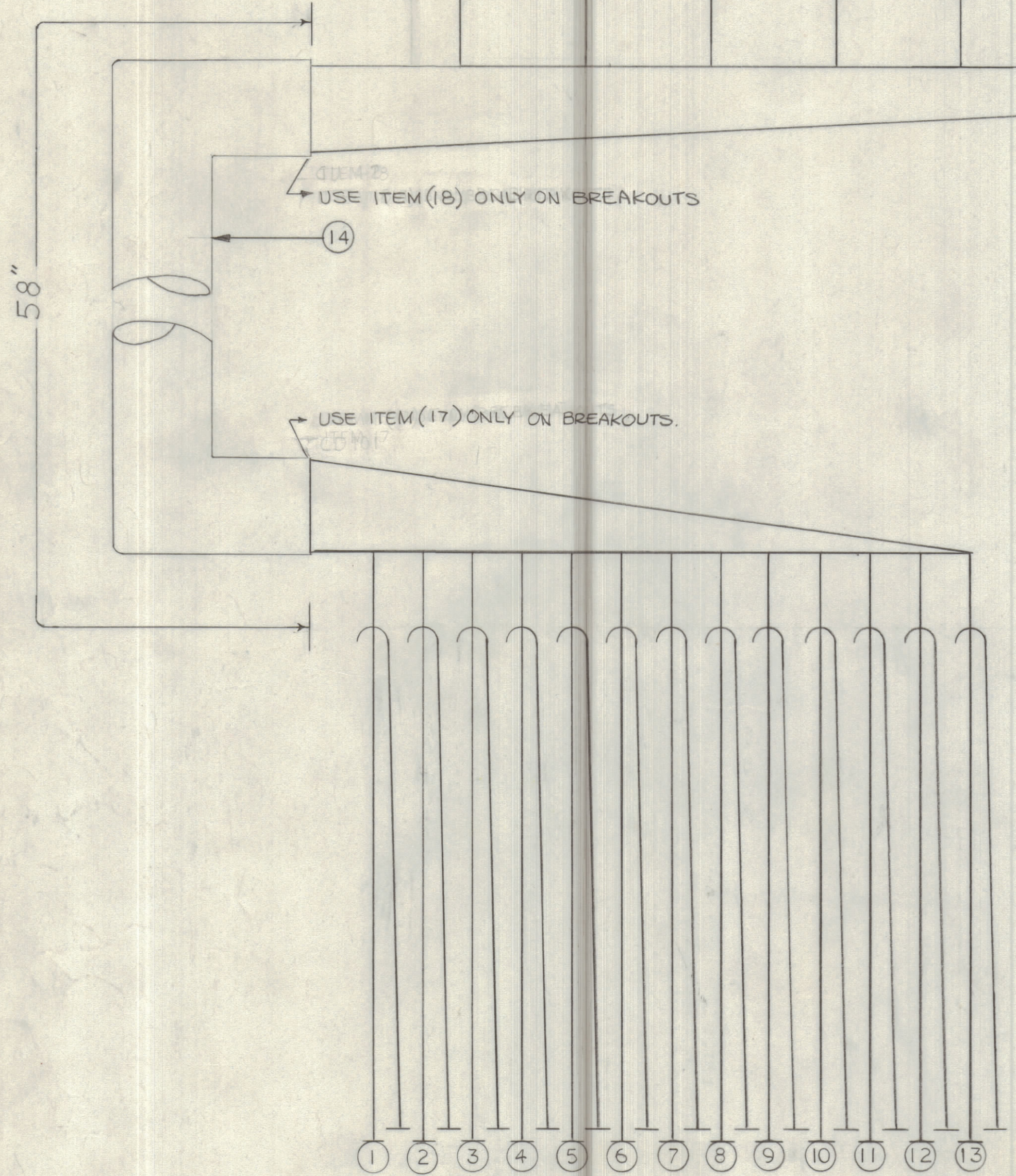
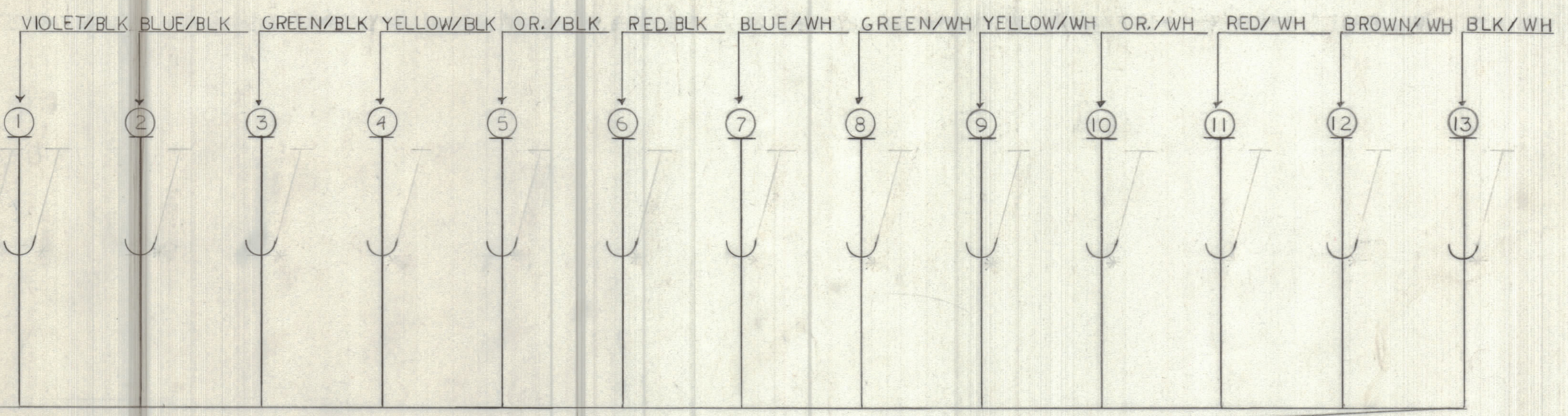


REVISIONS						
ZONE	LTR	DESCRIPTION	DATE	E.M.N.NO	DRAFT	CHKD APPD
X		EXP. RELEASE	8-31-67		H.G.	
		ORIG. RELEASE FOR PRODUCTION	12-27-67		R.G.	



QTY. REQ.	ITEM	PART NO.	DESCRIPTION	SYMBOL
X	19	BS100	SOLDER, TIN ALLOY	
X	18	CU142	STRAP, CBL, ADJ.	
X	17	CD 101-1MW	CORD, NYLON, LACING	
X	16	PX 830-16-1	INS. SLVG, SHRINK	
X	15	PX 100-1-	INS. SLVG, ELEC.	
	14	22-13 PRTMC-TT	CABLE, MULTI COND. PAIRS SHLD.	
	13		"	
	12		"	
	11		"	
	10		"	
	9		"	
	8		"	
	7		"	
	6		"	
	5		"	
	4		"	
	3		"	
	2		"	
	1	22-13 PRTMC-TT	"	

QTY. REQ. ITEM PART NO. DESCRIPTION SYMBOL

M. STURMER LIST OF MATERIAL CA-J11214-21#22

FINAL APPROVAL		DATE	THE TECHNICAL MATERIEL CORP.	
[Signature]		12/29/67	MAMARONECK, NEW YORK	
MECH. DES.		DATE	WIRING HARNESS, BRANCHED	
[Signature]		11/16/67		
ELECT. DES.		DATE		
[Signature]		12-27-67		
CHECKED		DATE		
[Signature]				
DRAWN		DATE		
[Signature]				
TOLERANCES ON				
DECIMALS	FRACTIONS			
.X ± .05	± 1/64			
.XX ± .01	ANGLES			
.XXX ± .005	± 0°-30'			
MATERIAL		SIZE	CODE IDENT. NO.	DWG. NO.
		D	82679	CA1355
FINISH		SCALE 1:1		
		SHEET OF		

UNLESS OTHERWISE SPECIFIED WIRES SHOULD BE PLACED IN CABLE IN NUMERICAL SEQUENCE AS THEY APPEAR IN ITEM COLUMN BY CATEGORY.

- ALL R.F. CABLES
- ALL SHIELDED CABLES
- ALL OTHERS

SPACE LACING APPROXIMATELY 3/4" APART.

THIS SYMBOL INDICATES END OF SHIELDING.

THIS SYMBOL DENOTES END OF INSULATION AND NAIL DRIVING POINT. WIRE MUST BE STRIPPED 3/4" BEYOND THIS POINT AND TINNED 1/2" UNLESS OTHERWISE SPECIFIED.

THE ABOVE SYMBOL DENOTES END OF SHIELD, WHICH SHOULD BE TERMINATED AS SHOWN, LEAVING EXCESS SHIELDING AS A PIGTAIL. TIN PIGTAIL 1/4 INCH.

NOTICE TO PERSONS RECEIVING THIS DRAWING

THE TECHNICAL MATERIEL CORPORATION claims proprietary right in the material disclosed hereon. This drawing is issued in confidence for engineering information only and may not be reproduced or used to manufacture anything shown hereon without permission from THE TECHNICAL MATERIEL CORPORATION to the user. This drawing is loaned for mutual assistance and is subject to recall at any time.

QTY / UNIT	MODEL USED ON	ASS'Y NO.
2	RAK-75-4	
APPLICATION		
CODE	S401-451	
A		