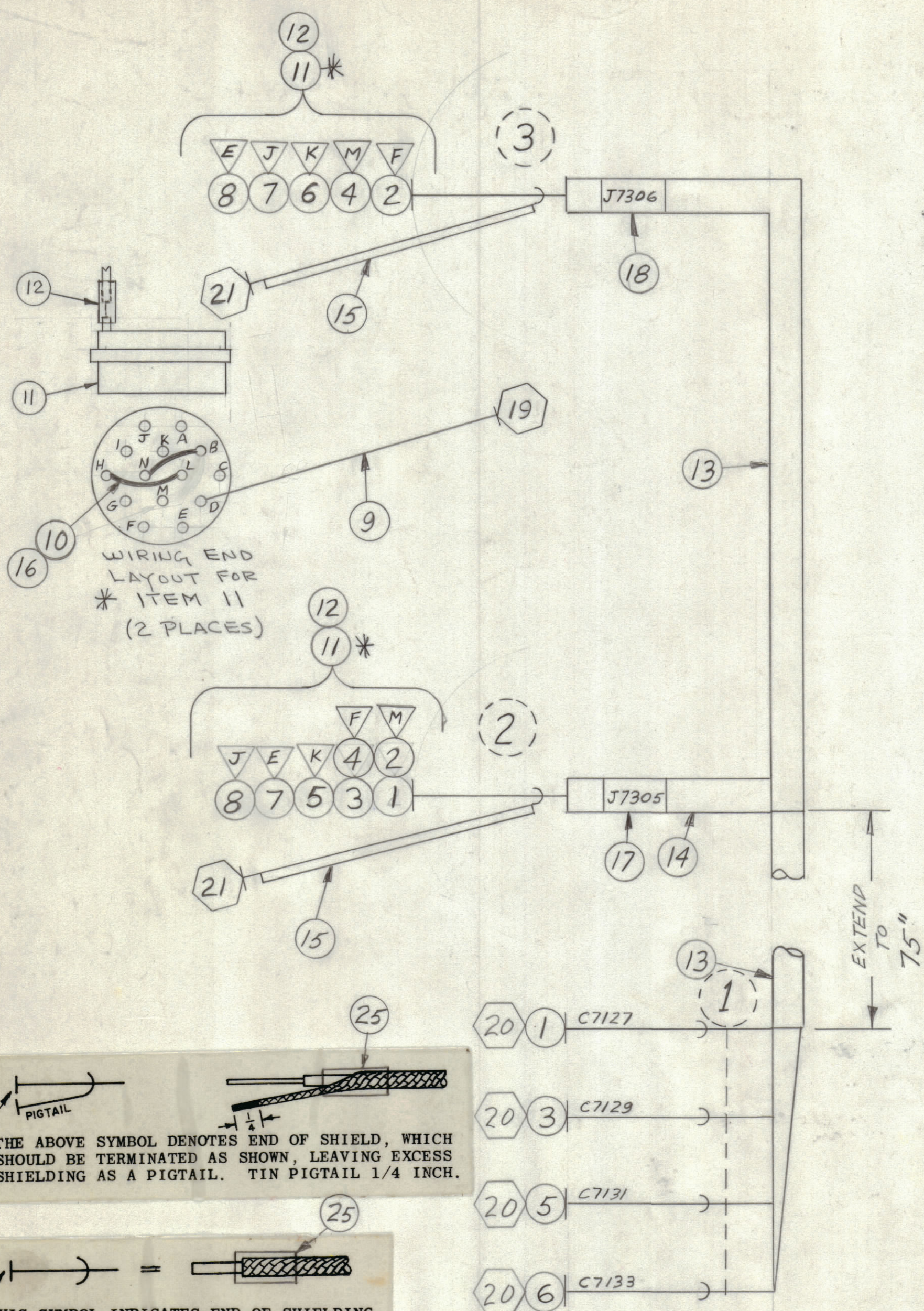


REVISIONS						
ZONE	LTR	DESCRIPTION	DATE	E.M.N.NO	DRAFT	CHKD APPD
	X	EXP. RELEASE	11.1.67		H.S.	
	Ø	ORIG. RELEASE FOR PROD.	5-31-68		R.B.	J.A.S.



SYMBOL DENOTES

- = ITEM NOS
- = TAGS
- △ = PINS
- (dashed) = BREAKOUTS
- ⬡ = LUGS

FROM	TO	QTY. REQ.	ITEM	PART NO.	DESCRIPTION	SYMBOL
		25		PX830-12-1	INS, SLVG, SHRINK	
		X	24	BS100	SOLDER, TIN ALLOY	
		X	23	TA101-1	INS, TAPE, EL, GL 1/4 W	
		X	22	CD101-1MW	CORD, NYLON LACING	
		2	21	TE155-34835	TERM, LUG, INS, NO.4	
		4	20	TE156-32947	TERM, LUG, INS, NO.6	
		1	19	TE156-34141	TERM, LUG, INS, NO.4	
		1	18	LA107-15-J7306	SLV, MKR, CBL	
		1	17	LA107-16-J7305	SLV, MKR, CBL	
			16	PX104-1-034	INS, SLVG, ELEC	
			15	PX100-1-208	INS, SLVG, BLK	
			14	PX100-1-330	INS, SLVG, BLK	
			13	PX100-1-263	INS, SLVG, BLK	
		2	11	MS3102A20-27S	CONN, RECP, FML 14/C	J7305, J7306
			10	WL100-6	WIRE, ELEC BUSS	
			9	MWC20(7)U0	WIRE, ELEC, INS	
2	3	8		MWC22(7)SJ6	J7305 PIN J	J7306 PIN E
2	3	7		5	J7305 PIN E	J7306 PIN J
1	3	6		4	C7133	J7306 PIN K
1	2	5		3	C7131	J7305 PIN K
3	2	4		2	J7306 PIN M	J7305 PIN F
1	2	3		2	C7129	J7305 PIN F
3	2	2		1	J7306 PIN F	J7305 PIN M
1	2	1		MWC22(7)SJ1	C7127	J7305 PIN M

PIGTAIL

THE ABOVE SYMBOL DENOTES END OF SHIELD, WHICH SHOULD BE TERMINATED AS SHOWN, LEAVING EXCESS SHIELDING AS A PIGTAIL. TIN PIGTAIL 1/4 INCH.

THIS SYMBOL INDICATES END OF SHIELDING.

THIS SYMBOL DENOTES END OF INSULATION AND NAIL DRIVING POINT. WIRE MUST BE STRIPPED 3/4" BEYOND THIS POINT AND TINNED 1/2" UNLESS OTHERWISE SPECIFIED.

QTY / UNIT	GPT40KEL	MODEL USED ON	ASS'Y NO.
APPLICATION			
	CODE A	S401-451	

NOTICE TO PERSONS RECEIVING THIS DRAWING

THE TECHNICAL MATERIEL CORPORATION claims proprietary right in the material disclosed hereon. This drawing is issued in confidence for engineering information only and may not be reproduced or used to manufacture anything shown hereon without permission from THE TECHNICAL MATERIEL CORPORATION to the user. This drawing is loaned for mutual assistance and is subject to recall at any time.

UNLESS OTHERWISE SPECIFIED DIMENSIONS ARE IN INCHES AND INCLUDE CHEMICALLY APPLIED OR PLATED FINISHES

TOLERANCES ON

DECIMALS	FRACTIONS
.X ± .05	± 1/64
.XX ± .01	ANGLES
.XXX ± .005	± 0° -30'

FINAL APPROVAL: BUDETTI (signature) DATE: 5-31-68

MECH. DES. DATE: 5-31-68

ELECT. DES. DATE: 5-31-68

CHECKED: T.T. DATE: 5-31-68

DRAWN: S.M. DATE: 25 OCT 67

LIST OF MATERIAL

THE TECHNICAL MATERIEL CORP.  
MAMARONECK, NEW YORK

WIRING HARNESS, BRANCHED

SIZE	CODE IDENT.NO.	DWG NO.	ISSUE
C	82679	CA1389	Ø
SCALE	SHEET		OF