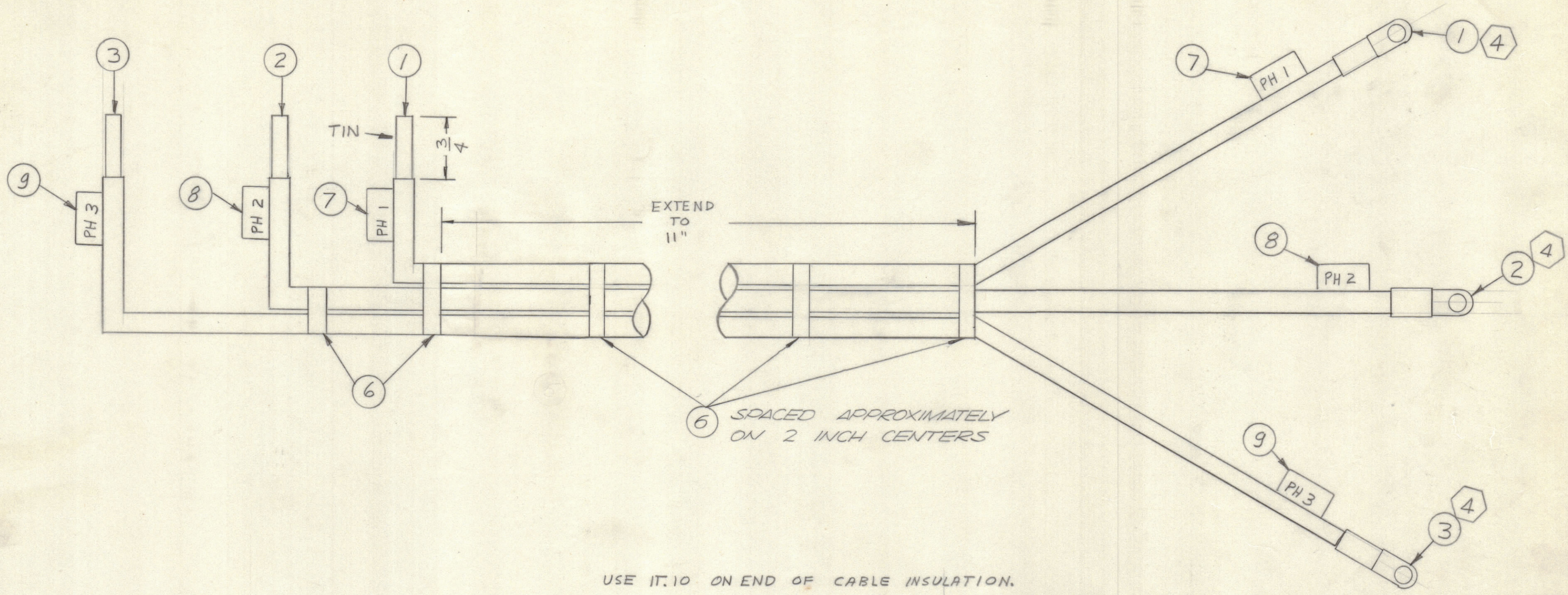


REVISIONS							
E.M.N.NO	DRAFT	CHKD	ZONE	LTR	DESCRIPTION	DATE	APPROVED
	0			Ø	ORIGINAL RELEASE FOR PRODUCTION	4/27/70	
19942	GE	FB		A	DELE. IT. 5 PICT CHG.	8-3-70	FB



USE IT.10 ON END OF CABLE INSULATION.

11	BS100	SOLDER, TIN ALLOY
10	PX830-4-1	INS, SLUG, SHRINK
2	9 LA107-16-PH3	SLUG, MKR, CBL
2	8 LA107-16-PH2	SLUG, MKR, CBL
2	7 LA107-16-PH1	SLUG, MKR, CBL
8	6 CUI42-2	STRAP, CBL, ADJ
5	DELETED	
3	4 TE197-4-25	TERM, LUG, INS
3	HWC6 (127)U7	CBL, INS
2	HWC6 (127)U8	CBL, INS
1	HWC6 (127)U9	CBL, INS

QTY. REQ.	ITEM	PART NO.	DESCRIPTION	SYMBOL
BUDETTI LIST OF MATERIAL				
FINAL APPROVAL		DATE	THE TECHNICAL MATERIEL CORP.	
MECH. DES.		DATE	MAMARONECK, NEW YORK	
ELECT. DES.		DATE	CABLE, PWR PRI	
CHECKED		DATE		
DRAWN		DATE		
SIZE	CODE IDENT NO.	DWG NO.	ISSUE	
C	82679	CA1562	A	
SCALE			SHEET OF	

1	PALA-10K	API48
QTY / UNIT	MODEL USED ON	ASS'Y NO.
APPLICATION		
CODE		

UNLESS OTHERWISE SPECIFIED DIMENSIONS ARE IN INCHES AND INCLUDE CHEMICALLY APPLIED OR PLATED FINISHES

TOLERANCES ON
 DECIMALS .X ± .05
 .XX ± .01
 .XXX ± .005
 FRACTIONS ± 1/64
 ANGLES ± 0° -30'

MATERIAL
 FINISH

NOTICE TO PERSONS RECEIVING THIS DRAWING
 THE TECHNICAL MATERIEL CORPORATION claims proprietary right in the material disclosed hereon. This drawing is issued in confidence for engineering information only and may not be reproduced or used to manufacture anything shown hereon without permission from THE TECHNICAL MATERIEL CORPORATION to the user. This drawing is loaned for mutual assistance and is subject to recall at any time.

CA1562 A B

A