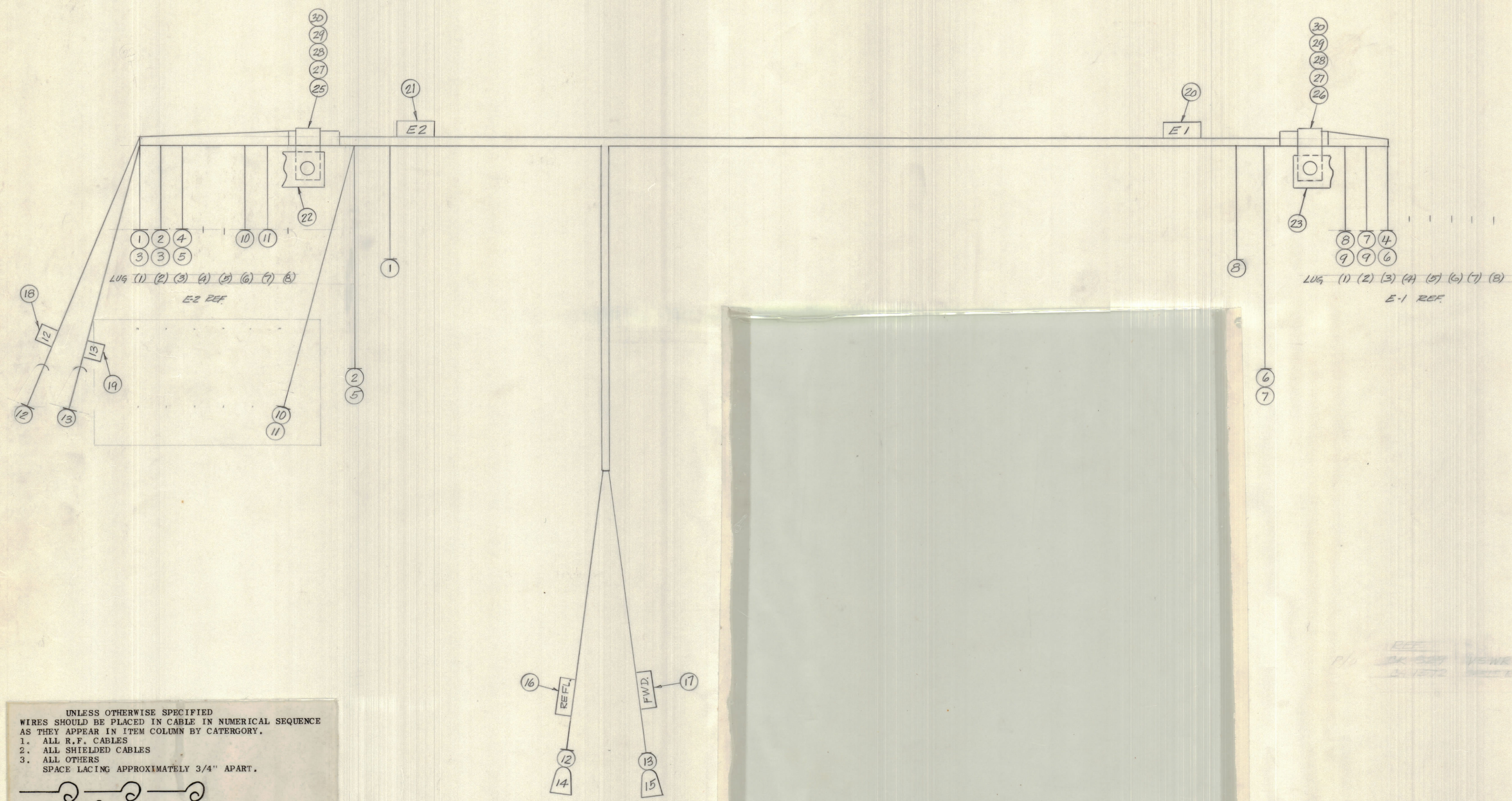


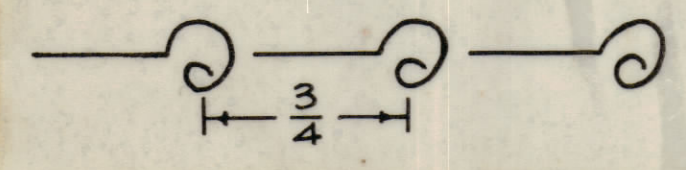
| REVISIONS |       |      |      |     |                                 |        |          |
|-----------|-------|------|------|-----|---------------------------------|--------|----------|
| E.M.N.NO  | DRAFT | CHKD | ZONE | LTR | DESCRIPTION                     | DATE   | APPROVED |
|           | W     |      |      | Ø   | ORIGINAL RELEASE FOR PRODUCTION | 3/1/70 |          |



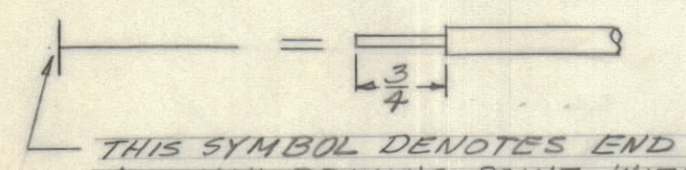
UNLESS OTHERWISE SPECIFIED WIRES SHOULD BE PLACED IN CABLE IN NUMERICAL SEQUENCE AS THEY APPEAR IN ITEM COLUMN BY CATEGORY.

1. ALL R.F. CABLES
2. ALL SHIELDED CABLES
3. ALL OTHERS

SPACE LACING APPROXIMATELY 3/4" APART.



THIS SYMBOL INDICATES END OF SHIELDING.



THIS SYMBOL DEVOTES END OF INSULATION AND NAIL DRIVING POINT. WIRE MUST BE STRIPPED 3/4" BEYOND THIS POINT AND TINNED 1/2" UNLESS OTHERWISE SPECIFIED.

REF: CK829

|   |               |           |
|---|---------------|-----------|
| 1   | PPTA-1        | AX 514    |
| QTY / UNIT  | MODEL USED ON | ASS'Y NO. |
| APPLICATION   |               |           |
| CODE  |               |           |
| NOTICE TO PERSONS RECEIVING THIS DRAWING  |               |           |
| THE TECHNICAL MATERIEL CORPORATION claims proprietary right in the material disclosed herein. This drawing is issued in confidence for engineering information only and may not be reproduced or used to manufacture anything shown hereon without permission from THE TECHNICAL MATERIEL CORPORATION to the user. This drawing is loaned for mutual assistance and is subject to recall at any time. |               |           |

| QTY. REQ.        | ITEM | PART NO. | DESCRIPTION                  | SYMBOL |
|------------------|------|----------|------------------------------|--------|
| LIST OF MATERIAL |      |          |                              |        |
| FINAL APPROVAL   |      | DATE     | THE TECHNICAL MATERIEL CORP. |        |
| MECH. DES.       |      | DATE     | MAMARONECK, NEW YORK         |        |
| ELECT. DES.      |      | DATE     | WIRING HARNESS BRANCHED      |        |
| CHECKED          |      | DATE     | SIZE CODE IDENT NO. DWG NO.  |        |
| DRAWN            |      | DATE     | D 82679 CA 1572              |        |
| MATERIAL         |      |          | ISSUE                        |        |
| FINISH           |      |          | SCALE 1:1 SHEET 1 OF 1       |        |