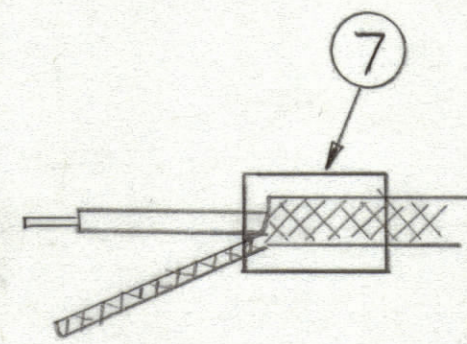
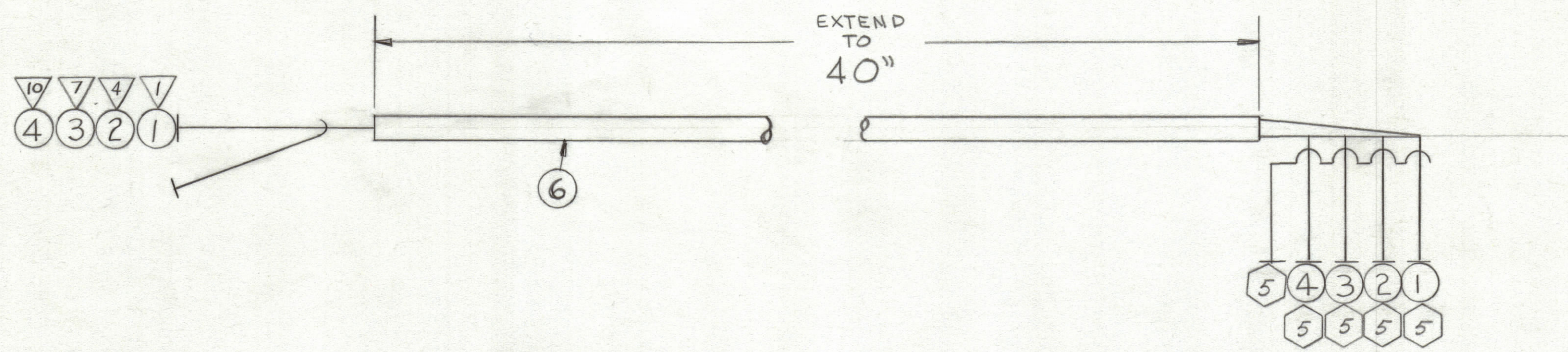


| REVISIONS | | | | | | |
|-----------|-----|---------------------------------|--------|----------|-------|-----------|
| ZONE | LTR | DESCRIPTION | DATE | E.M.N.NO | DRAFT | CHKD APPD |
| | Ø | ORIGINAL RELEASE FOR PRODUCTION | 9/1/71 | | Ø | Ø E.A. |



| QTY. REQ. | ITEM | PART NO. | DESCRIPTION | SYMBOL |
|-----------|------|-------------|---------------------|--------------|
| | 10 | | | |
| | 9 | CD101-1 MW | CORD, NYLON, LACING | |
| | 8 | BS100 | SOLDER, TIN ALLOY | |
| | 7 | PXB30-12-1 | INS, SLUG, SHRINK | |
| | 6 | PX100-1-263 | INS, SLUG, BLK | |
| | 5 | TE120-2 | TERM LUG, SPADE | |
| | 4 | MWC24(7)SJ4 | XK1000 PIN 10 | E3010 TERM 4 |
| | 3 | MWC24(7)SJ3 | XK1000 PIN 7 | E3010 TERM 3 |
| | 2 | MWC24(7)SJ2 | XK1000 PIN 4 | E3010 TERM 2 |
| | 1 | MWC24(7)SJ1 | XK1000 PIN 1 | E3010 TERM 1 |

| LIST OF MATERIAL | | | |
|---|--------------------|-----------|-------|
| BUDGET 1 | FINAL APPROVAL | DATE | |
| | <i>[Signature]</i> | 15 Mar 71 | |
| | MECH. DES. | DATE | |
| | ELECT. DES. | DATE | |
| | <i>[Signature]</i> | 15 Mar 71 | |
| | CHECKED | DATE | |
| | DRAWN | DATE | |
| | <i>[Signature]</i> | 18 Feb 71 | |
| THE TECHNICAL MATERIEL CORP. MAMARONECK, NEW YORK | | | |
| CABLE, RELAY | | | |
| SIZE | CODE IDENT. NO. | DWG NO. | ISSUE |
| C | 82679 | CA1614 | Ø |
| SCALE | SHEET | | OF |

| QTY / UNIT | MODEL USED ON | ASS'Y NO. |
|---|---------------|-----------|
| 1 | GPTM-10KLA | AX5124 |
| APPLICATION | | |
| | CODE | |
| <small>NOTICE TO PERSONS RECEIVING THIS DRAWING</small> <small>THE TECHNICAL MATERIEL CORPORATION claims proprietary right in the material disclosed hereon. This drawing is issued in confidence for engineering information only and may not be reproduced or used to manufacture anything shown hereon without permission from THE TECHNICAL MATERIEL CORPORATION to the user. This drawing is loaned for mutual assistance and is subject to recall at any time.</small> | | |
| MATERIAL | | |
| FINISH | | |

UNLESS OTHERWISE SPECIFIED DIMENSIONS ARE IN INCHES AND INCLUDE CHEMICALLY APPLIED OR PLATED FINISHES

TOLERANCES ON

| | |
|-------------|-----------|
| DECIMALS | FRACTIONS |
| .X ± .05 | ± 1/64 |
| .XX ± .01 | ANGLES |
| .XXX ± .005 | ± 0° .30' |

CA1614 Ø