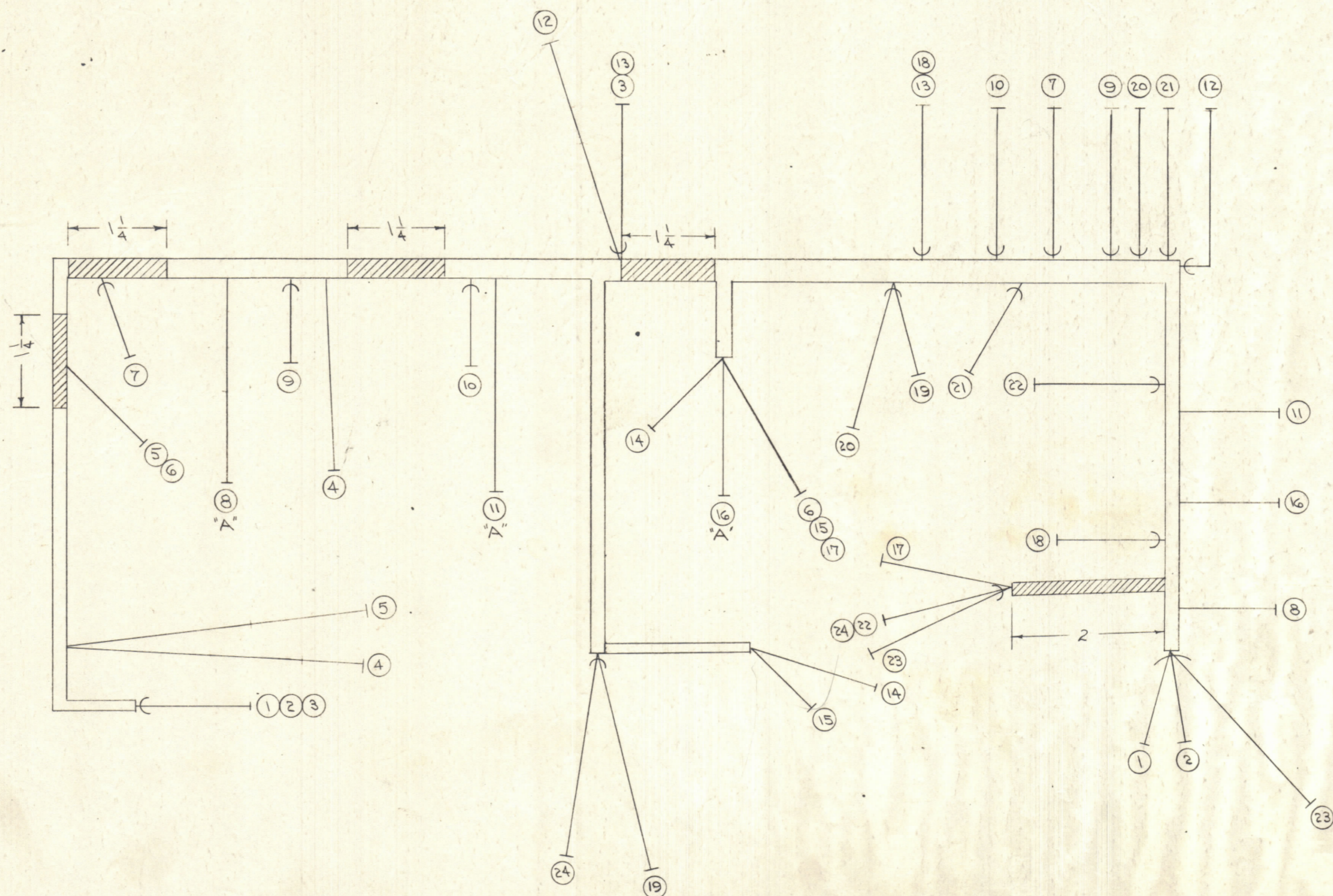


IF IT IS FOUND DESIRABLE TO CHANGE ANY TOLERANCE OR OTHER DETAIL SPECIFIED ON THIS DRAWING NOTIFY THE PURCHASER PROMPTLY.
 MAXIMUM ALLOWABLE TOLERANCES HAVE BEEN DETERMINED AND DEVIATIONS WILL BE CAUSE FOR REJECTION.
 REMOVE ALL BURRS AND SHARP EDGES



BOTTOM OF CABLE

C INDICATES PIGTAIL
 Hatched area: SLEEVING TO FIT

NOTE
 1- 8-11-16 STRIP 3/4 BOTH ENDS
 2- WIRE LENGTHS ARE TOTAL LENGTHS AND ALLOW 1/2" EACH END FOR STRIPPING EXCEPT AS PER NOTE 1.

FOR ITEMS MARKED SHIELD

E	1	ITEM 16 WAS RED	1/4/54	5	16	WVA	WVA
	4	ITEM 24 DIGITAL WAS 24 3/4					
D	3	ITEM 17 WAS 18 3/4	3/6/56	4	17	JAW	AJJ
	2	ITEM 12 WAS 13 1/2					
	1	ITEM 4 WAS 15 1/4					
C	1	ITEM 22 WAS RED	1/4/54	3	22	JAW	WVA AJJ
B	1	ITEM 3 WAS 3' LONG	1/4/54	2	3	WVA	AJJ
A	1	WIRE LENGTHS & SHIELD LENGTHS ADD	1-4-54	1	18	WVA	KZ
ISSUE	ITEM	CHANGED FROM	DATE	CH. NO.	DRAFTS	CHECKER	ENG. APP.
TOLERANCES		SCALE:					
ALL OTHERS		DRILL PUNCH, COMMERCIAL STOCK SIZES AND MANUFACTURERS TOLERANCES ARE NOT INCLUDED.					

	28	PX-100-1-	INSULATION, SLEEVING	
	27	PX-100-1-	"	
	26	WI-101-A	CABLE, SHIELD FLEX	
X	25	CD-100-1	CORD LACING, NYLON	
24 3/4	24	SRR215(7)22U 55	CABLE, INSULATED (GRN.)	22 3/4
8 1/2	23		(BWE)	8
9 1/4	22	25	(WH/GRN)	9 1/4
6 1/2	21	22	(RED)	6 1/4
8 1/2	20	66	(BWE)	8
14 1/2	19	22	(RED)	14 1/4
11 3/4	18	66	(BWE)	11 1/4
17 1/2	17	22	(RED)	
14 1/2	16	33	(OR.)	
14 1/2	15	22	(RED)	
13 1/2	14	92	(WH/RED)	
9 1/2	13	66	(BWE)	9
14 1/2	12	22	(RED)	12 3/4
16 3/4	11	92	(WH/RED)	
11 1/2	10	22	(RED)	10 3/4
15 1/4	9	22	(RED)	14 3/4
22 1/2	8	22	(RED)	
17	7	55	(GRN.)	16 3/4
15 1/2	6	22	(RED)	
10 1/2	5	22	(RED)	
16 1/4	4	92	(WH/RED)	
19 1/2	3	66	(BLUE)	18 1/2
	2	WI-101-A	CABLE, SHIELDED (WHITE)	31 1/4
30	1	SRR215(7)22U 22	" INSULATED (RED)	29 1/4

REQ. ITEM	PART NO.	DESCRIPTION	QUANTITY
THE TECHNICAL MATERIEL CORP. MAMARONECK, NEW YORK			
CABLE NO. 1 POWER			
RSC-2			
TYPE & TEMPER		CD. 11/1/54	1/10/54 M.T.S.
DRAWN		ELEC. DES. APP.	MECH. DES. APP.
HEAT TREAT. SPEC.		CHECKED	FINAL APPROVAL
FINISH & SPEC. NO.		CA-225 E	

1	RSC-2	170	11-17-54
REV	MODEL	PROJECT NO.	ASSY. NO.
UNIT			DATE
USED ON			

CA-225 E