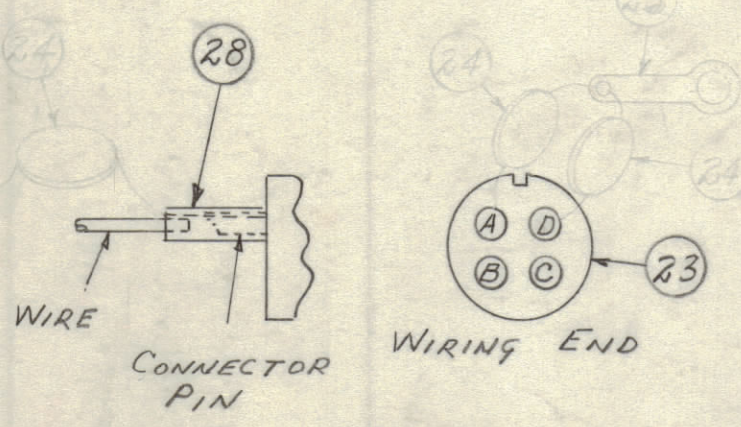
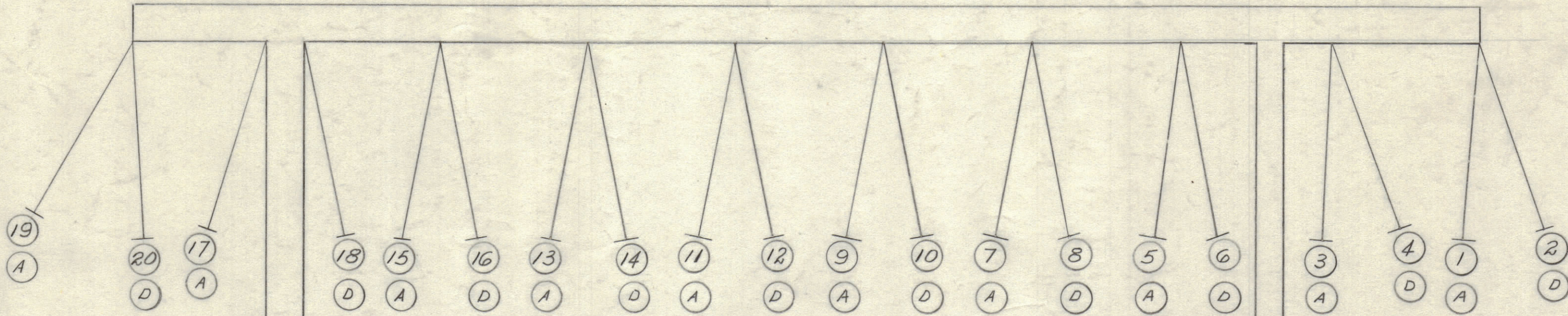
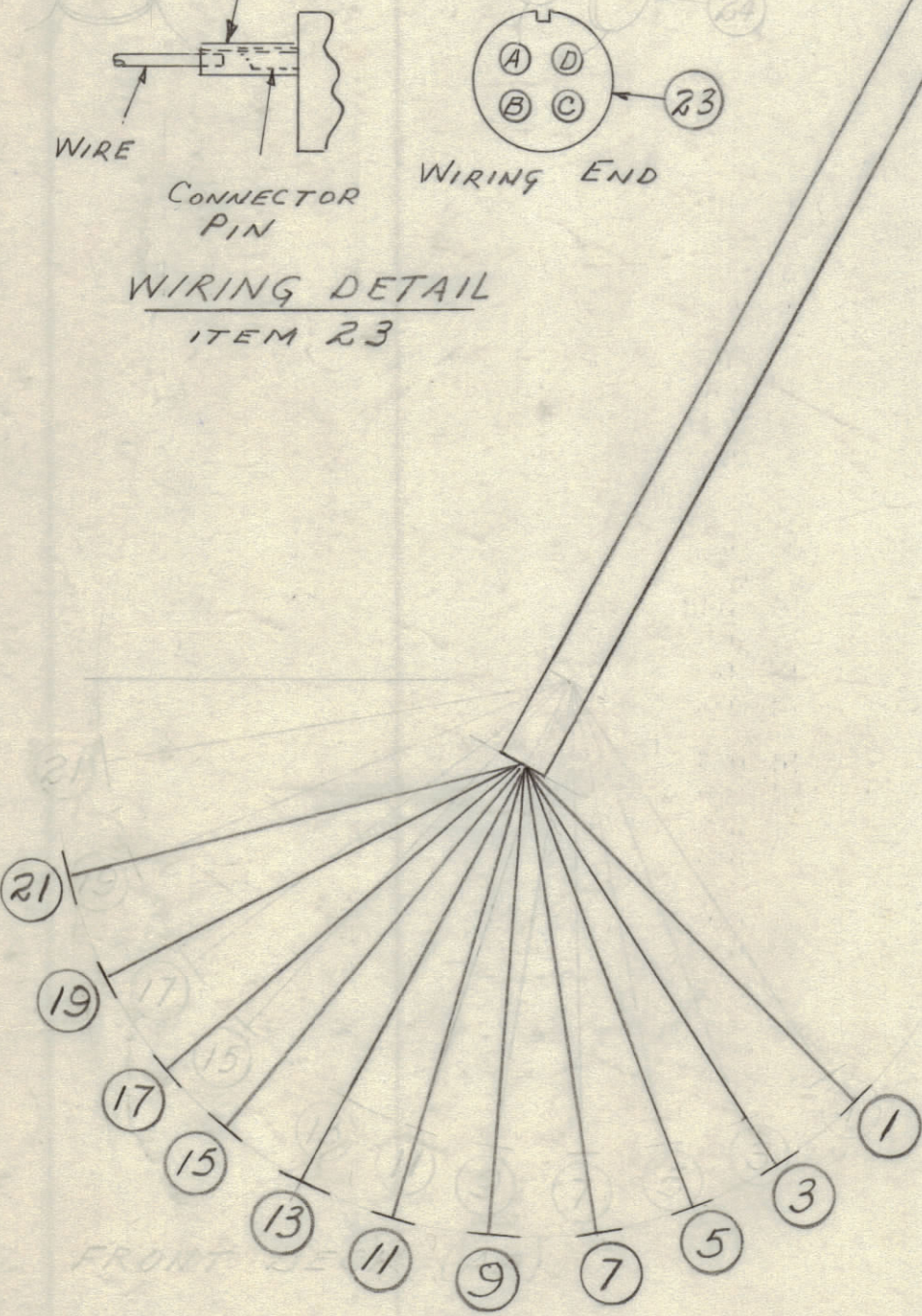


IF IT IS FOUND DESIRABLE TO CHANGE ANY TOLERANCE OR OTHER DETAIL SPECIFIED ON THIS DRAWING NOTIFY THE PURCHASER PROMPTLY.

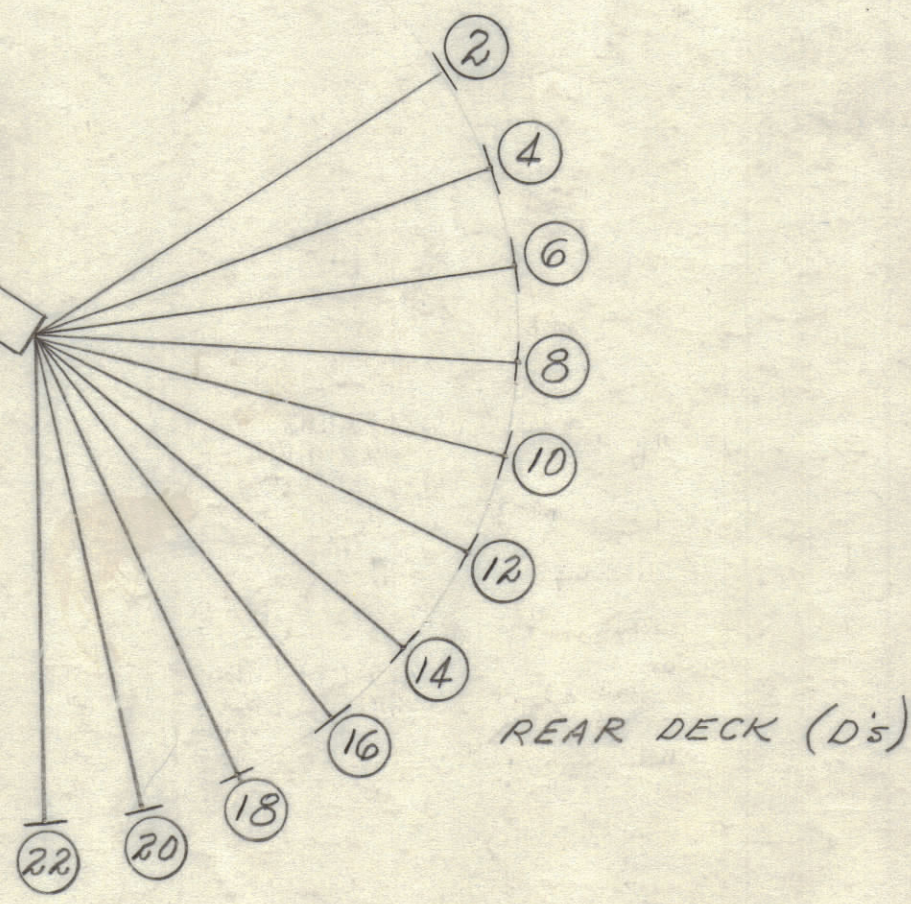
MAXIMUM ALLOWABLE TOLERANCES HAVE BEEN DETERMINED AND DEVIATIONS WILL BE CAUSE FOR REJECTION. REMOVE ALL BURRS AND SHARP EDGES



WIRING DETAIL  
ITEM 23



FRONT DECK (A's)



REAR DECK (D's)

X 28	PX-100-1-106	INSULATION, SLEEVING	
X 27	CD-101-1-MW	CORD, LACING	
X 26	B5-100	SOLDER, SOFT	
	25	DELETED	
	24	DELETED	
10 23	MS3102A145-2P	CONNECTOR, RECEPTACLE	
	22	MWC22(7)U-0	CABLE, INSULATED, STRANDED
	21		RED

CA-375 B

20	-1		BRN
19	-3		OR
18	-4		YELL
17	-5		GRN
16	-6		BLUE
15	-7		VIO
14	-8		GREY
13	-9		WH
12	PINK		PINK
11	-92		WH/RED
10	-91		WH/BRN
9	-93		WH/OR
8	-94		WH/YELL
7	-95		WH/BRN
6	-96		WH/BLUE
5	-97		WH/VIO
4	-98		WH/GREY
3	-90		WH/BLK
2	-92		WH/RED
1		MWC22(7)U-91	CABLE, INSULATED, STRANDED

NOTICE TO PERSONS RECEIVING THIS DRAWING

THE TECHNICAL MATERIEL CORPORATION claims proprietary right in the material disclosed hereon. This drawing is issued in confidence for engineering information only and may not be reproduced or used to manufacture anything shown hereon without permission from THE TECHNICAL MATERIEL CORPORATION to the user. This drawing is loaned for mutual assistance and is subject to recall at any time.

Property of:  
THE TECHNICAL MATERIEL CORPORATION  
MAMARONECK, NEW YORK

3	MODEL WAS SWR-3000-RM.					
2	WH. 17.24" (22) CC100-16, CAR. FIXED DISC'S	122-65	13310	9R	@	
1	TT-23 (10) TENS 149 LUG, TERMINAL" DELE.					
A	DELETED ITEMS 24 (20) CC-100-16	4/1/58	450	dkc	MA	
ISSUE	ITEM	CHANGED FROM	DATE	CN. NO.	DRAFTS	CHECKER
						ENG. APP.

ALL OTHERS	DEC. DIM. ± FRAC. DIM. ± ANGULAR DIM. ±	DRILL, PUNCH, COMMERCIAL STOCK SIZES AND MANUFACTURERS TOLERANCES ARE NOT INCLUDED.
------------	---	---

1	SWR-3K-RM		5-21-58
REQ PER UNIT	MODEL	PROJECT NO.	ASS'Y. NO.
			DATE

REQ. ITEM	PART NO.	DESCRIPTION	SYMBOL
THE TECHNICAL MATERIEL CORP. MAMARONECK, NEW YORK			
CABLE, MAIN			
MODEL SWR-3K-RM			
TYPE & TEMPER	DRAWN	ELEC. DES. APP.	MECH. DES. APP.
HEAT TREAT. SPEC.	CHECKED	FINAL APPROVAL	
FINISH & SPEC. NO.			

CA-375 B