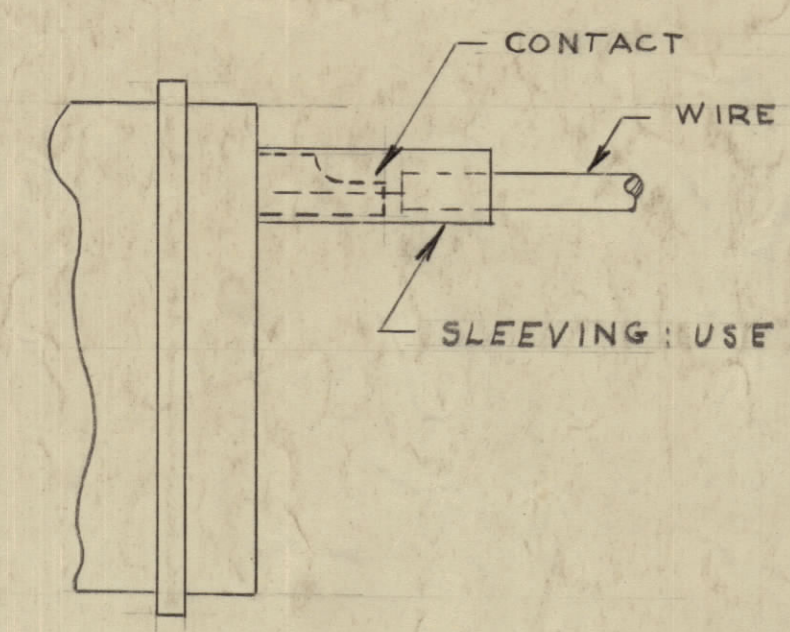
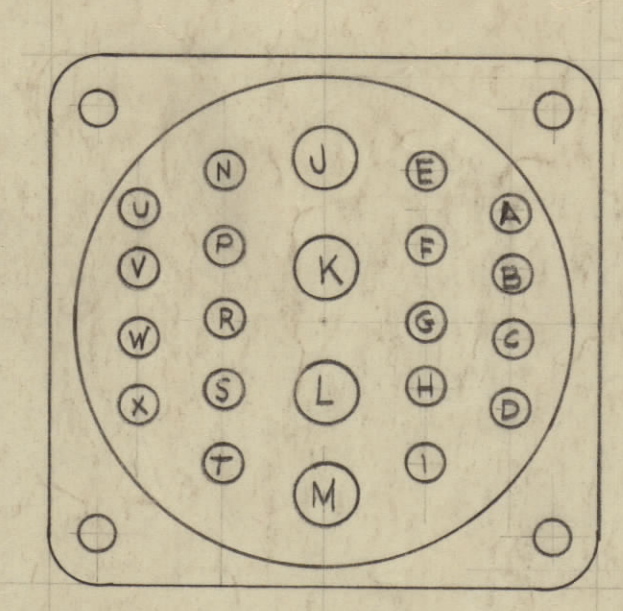


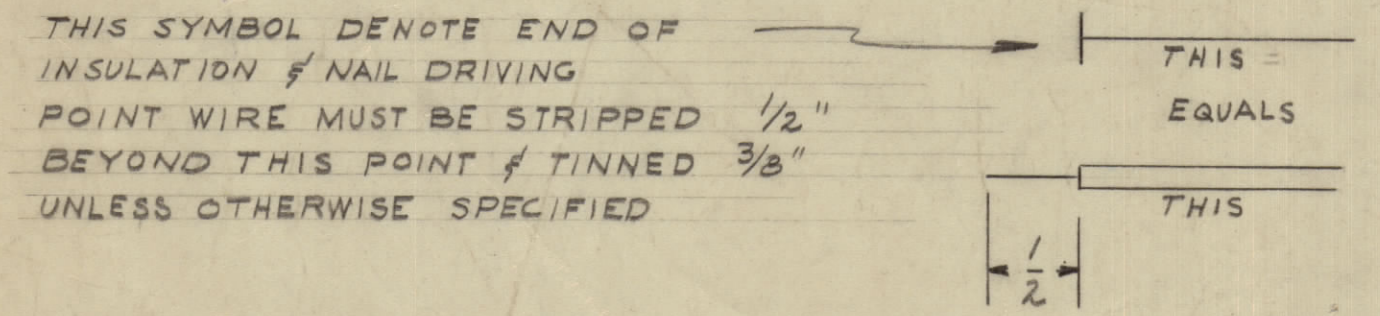
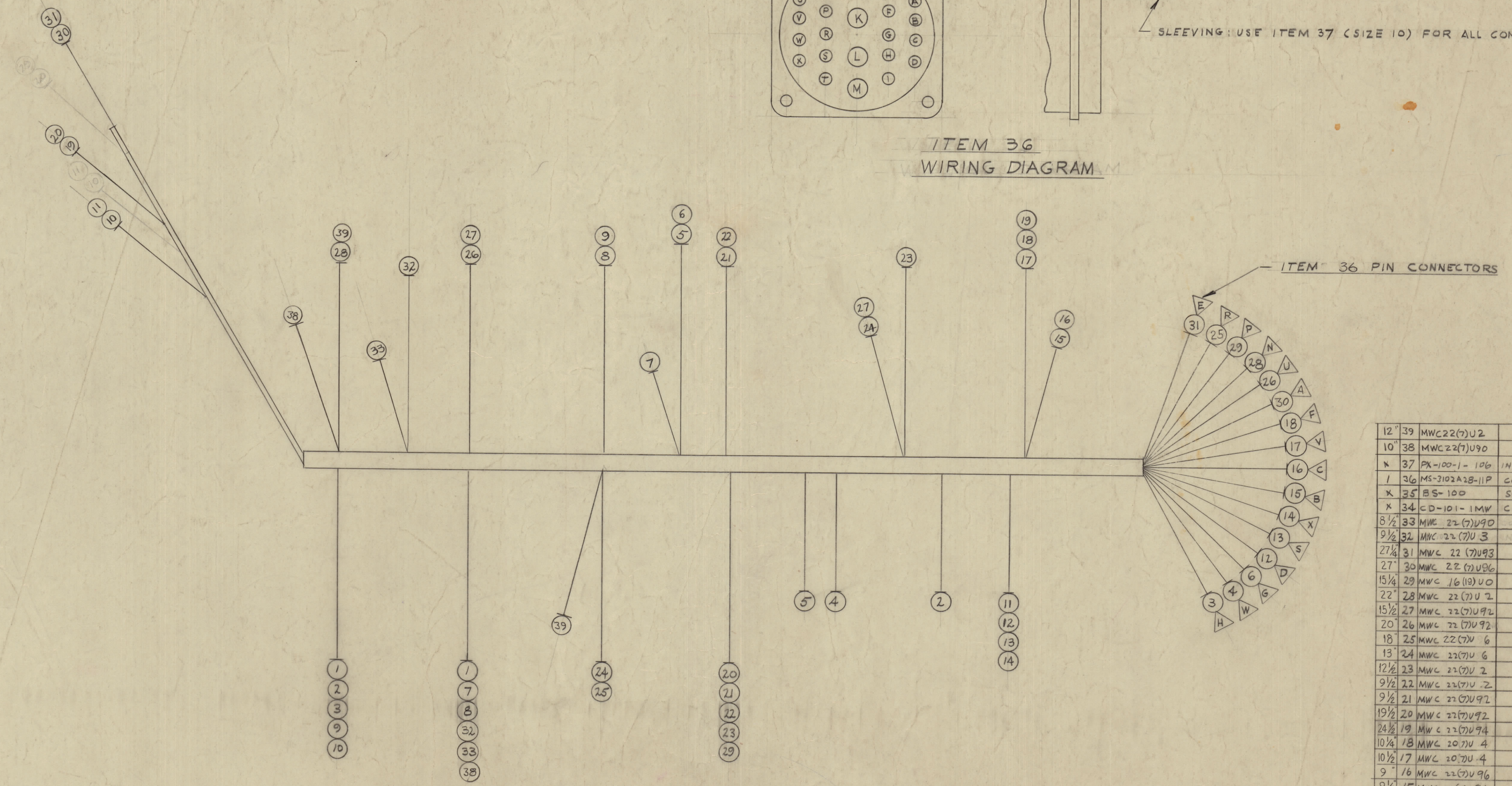
IF IT IS FOUND DESIRABLE TO CHANGE ANY TOLERANCE OR OTHER DETAIL SPECIFIED ON THIS DRAWING NOTIFY THE PURCHASER PROMPTLY.  
 MAXIMUM ALLOWABLE TOLERANCES HAVE BEEN DETERMINED AND DEVIATIONS WILL BE CAUSE FOR REJECTION. REMOVE ALL BURRS AND SHARP EDGES

NOTICE TO PERSONS RECEIVING THIS DRAWING  
 THE TECHNICAL MATERIEL CORPORATION claims proprietary right in the material disclosed herein. This drawing is issued in confidence for engineering information only and may not be reproduced or used to manufacture any thing shown hereon without permission from THE TECHNICAL MATERIEL CORPORATION to the user. This drawing is loaned for mutual assistance and is subject to recall at any time.  
 Property of:  
 THE TECHNICAL MATERIEL CORPORATION  
 MAMARONECK, NEW YORK



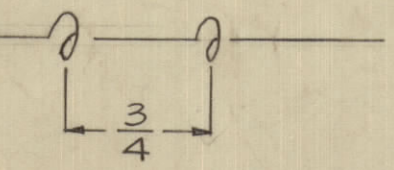
SLEEVING: USE ITEM 37 (SIZE 10) FOR ALL CONNECTIONS.

ITEM 36  
 WIRING DIAGRAM



WIRES SHOULD BE PLACED IN CABLE IN NUMERICAL SEQUENCE AS THEY APPEAR IN ITEM COLUMN.

SPACE LACING APPROX. 3/4" APART



ISSUE	ITEM	CHANGED FROM	DATE	CN. NO.	DRAFTS	CHECKER	ENG. APP.
F	1	BU UPDATED (113045)	2-3-51	1777	WLD		
E	1	IT 29 WAS MWC 16(7)U0	2-18-51	13485	WLD		
D	1	IT 15 WAS WH/BLUVE	8-8-44	11992	JTB		
C	1	WIRE LENGTHS ADDED	9-5-52	7179	SG		
B	-1	ON ITEM 36, ITEMS 15 & 30 CANCELED	1-24-51				
A	1	ITEM 35, PIN CORR. WAS ITEM 33	1-19-51	1445	J.C.B.		
	2	WIRE SIZE ITEM 30 WAS 20					
	3	R WAS 25					
	4	A WAS 50					

TOLERANCES	SCALE:
DEC. DIM. ±	DRILL, PUNCH, COMMERCIAL STOCK
FRAC. DIM. ±	SIZES AND MANUFACTURERS
ANGULAR DIM. ±	TOLERANCES ARE NOT INCLUDED.

REQ.	ITEM	PART NO.	DESCRIPTION	SYMBOL
	39	MWC 22(7)U 2		
	38	MWC 22(7)U 0		
X	37	PX-100-1-106	INSULATION, SLEEVING SIZE #10	
I	36	MS-3102A28-11P	CONNECTOR, PLUG, MALE	
X	35	BS-100	SOLDER SOFT	
X	34	CD-101-1MW	CORD LACING	
8 1/2	33	MWC 22(7)U 0		
9 1/2	32	MWC 22(7)U 3		
27 1/4	31	MWC 22(7)U 93		
27	30	MWC 22(7)U 96		
15 1/4	29	MWC 16(19)U 0		
22	28	MWC 22(7)U 2		
15 1/2	27	MWC 22(7)U 92		
20	26	MWC 22(7)U 92		
18	25	MWC 22(7)U 6		
13	24	MWC 22(7)U 6		
12 1/2	23	MWC 22(7)U 2		
9 1/2	22	MWC 22(7)U 2		
9 1/2	21	MWC 22(7)U 92		
19 1/2	20	MWC 22(7)U 92		
24 1/2	19	MWC 22(7)U 94		
10 1/4	18	MWC 20(7)U 4		
10 1/2	17	MWC 20(7)U 4		
9	16	MWC 22(7)U 96		
9 1/2	15	MWC 22(7)U 91		
9 1/4	14	MWC 20(7)U 91		
9 1/4	13	MWC 20(7)U 91		
9 1/4	12	MWC 22(7)U 9		
21 1/2	11	MWC 22(7)U 3		
11 3/4	10	MWC 22(7)U 93		
13 1/2	9	MWC 22(7)U 93		
11 3/4	8	MWC 22(7)U 3		
11	7	MWC 22(7)U 3		
16 1/2	6	MWC 22(7)U 94		
10 1/2	5	MWC 22(7)U 94		
12	4	MWC 22(7)U 3		
22	3	MWC 22(7)U 90		
18	2	MWC 22(7)U 90		
11 1/4	1	MWC 22(7)U 90		

1	GPT-10K	AX-104		1-13-50
REQ PER UNIT	MODEL	PROJECT NO.	ASSY. NO.	DATE
		USED ON		

STOCK SIZE		DESCRIPTION		SYMBOL
		THE TECHNICAL MATERIEL CORP. MAMARONECK, NEW YORK		
MATERIAL		CABLE, LV + BIAS SUPPLY		
TYPE & TEMPER				
HEAT TREAT. SPEC.				
FINISH & SPEC. NO.				

CA-420

CA-420 F