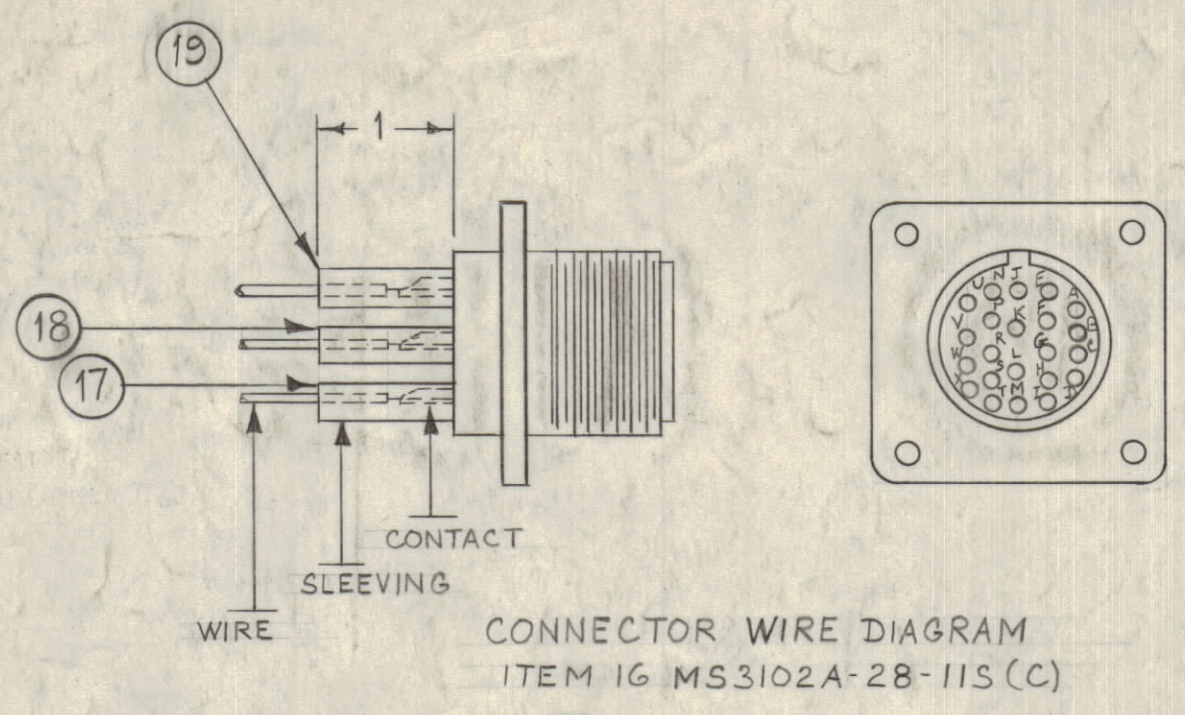
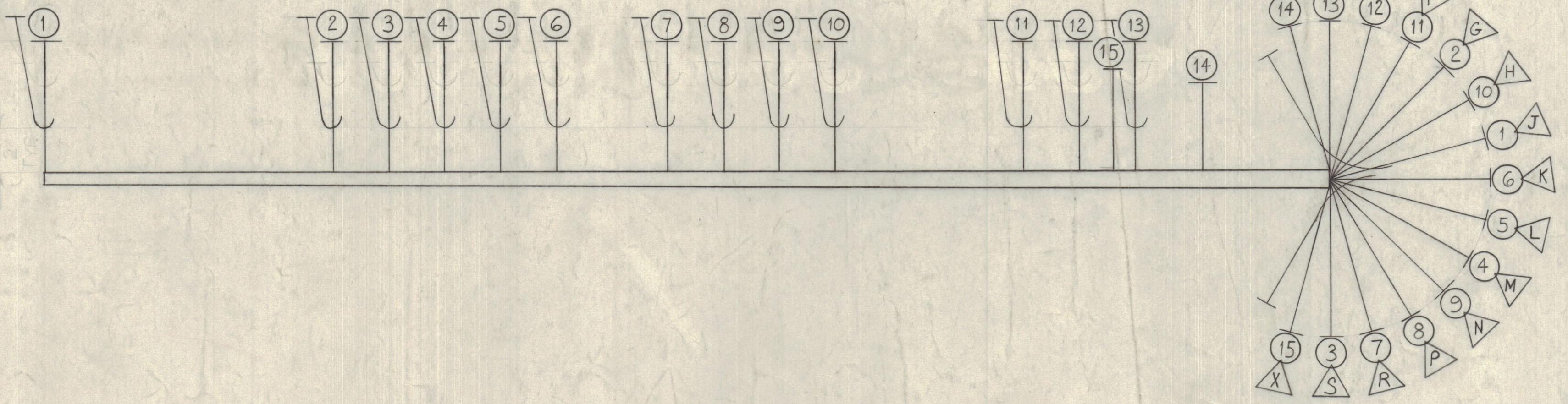


NOTICE TO PERSONS RECEIVING THIS DRAWING
 THE TECHNICAL MATERIEL CORPORATION claims proprietary right in the material disclosed hereon. This drawing is issued in confidence for engineering information only and may not be re-produced or used to manufacture anything shown hereon without permission from THE TECHNICAL MATERIEL CORPORATION to the user. This drawing is loaned for mutual assistance and is subject to recall at any time.
 Property of:
 THE TECHNICAL MATERIEL CORPORATION
 MAMARONECK, NEW YORK



ITEM 19 TO PINS A & X.
 ITEM 18 TO PINS J, K, L, & M.
 ITEM 17 TO REMAINING PINS.

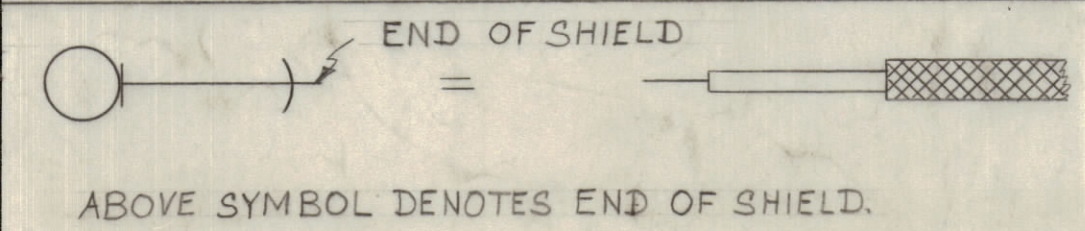


20	CD-101-1 MW	CORD, LACING	
19	PX-100-1-234	INSULATED SLEEVING	BLACK
18	PX-100-1-133	INSULATED SLEEVING	BLACK
17	PX-100-1-085	INSULATED SLEEVING	BLACK
16	MS-3102A-28-11S(C)	RECEPTACLE, CONNECTOR FEMALE	J501
15	MWC 24 (7) UO	CABLE, INSULATED	BLACK
14	MWC 24 (7) UO	CABLE, INSULATED	BLACK
13	MWC 24 (7) SJ93	CABLE, INSULATED, SHIELDED/JKT	WH/ORG.
12	95		WH/GRN.
11	96		WH/BLUE
10	91		WH/BRN.
9	94		WH/YELL.
8	5		GREEN
7	92		WH/RED
6	8		GREY
5	2		RED
4	1		BROWN
3	9		WHITE
2	4		YELLOW
1	MWC 24 (7) SJG	CABLE, INSULATED, SHIELDED/JKT	BLUE

THIS SYMBOL DENOTES END OF INSULATION & NAIL DRIVING POINT WIRE MUST BE STRIPPED 1/2" BEYOND THIS POINT & TINNED 3/8" UNLESS OTHERWISE SPECIFIED.

THIS EQUALS THIS

WIRES SHOULD BE PLACED IN CABLE IN NUMERICAL SEQUENCE AS THEY APPEAR IN ITEM COLUMN SPACE LACING APPROX. 3/4" APART.



B	IT 17-19 CLARIFIED; SYM IT 16 WAS JS09	11-14-66	17254	WJW					
A	ALL SHIELDS EXTENDED EXCEPT PLUG END IT, 1 THRU 13, MWC 24 (7) SJ WAS MWC 24 (7) S	2-23-66	15820	HLA					
SYM	ZONE	DESCRIPTION	DATE	CH. NO.	DRAFTS	CHECKER	ENG. APP.		
UNLESS OTHERWISE SPECIFIED:		SCALE							
DIMENSIONS ARE IN INCHES		MAXIMUM ALLOWABLE TOLERANCES HAVE BEEN DETERMINED AND ANY DEVIATIONS WILL BE CAUSE FOR REJECTION. REMOVE ALL BURRS & SHARP EDGES							
TOLERANCES ON FRACTIONS ± 1/64		DECIMALS ± .005		ANGLES ± 1/2°					

1	APP-4			12-8-60	
REQ. PER UNIT	MODEL	SECTION	ASSY. NO.	DATE	
USED ON					
FINISH & SPEC. NO.			ELEC. DES. APP. MECH. DES. APP. SHEET OF		

THE TECHNICAL MATERIEL CORP. MAMARONECK, NEW YORK			
CABLE, INPUT TO RF FILTER			
DRAWN		CHECKED	
RK		JPM	
TYPE & TEMPER		HEAT TREAT. SPEC.	
CA-585		B	
FINISH & SPEC. NO.		ELEC. DES. APP. MECH. DES. APP. SHEET OF	

CA-585 B