

CA-642 A

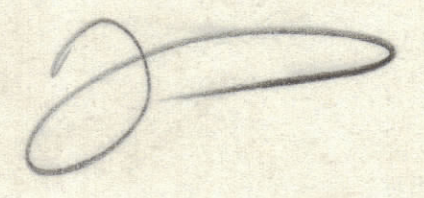
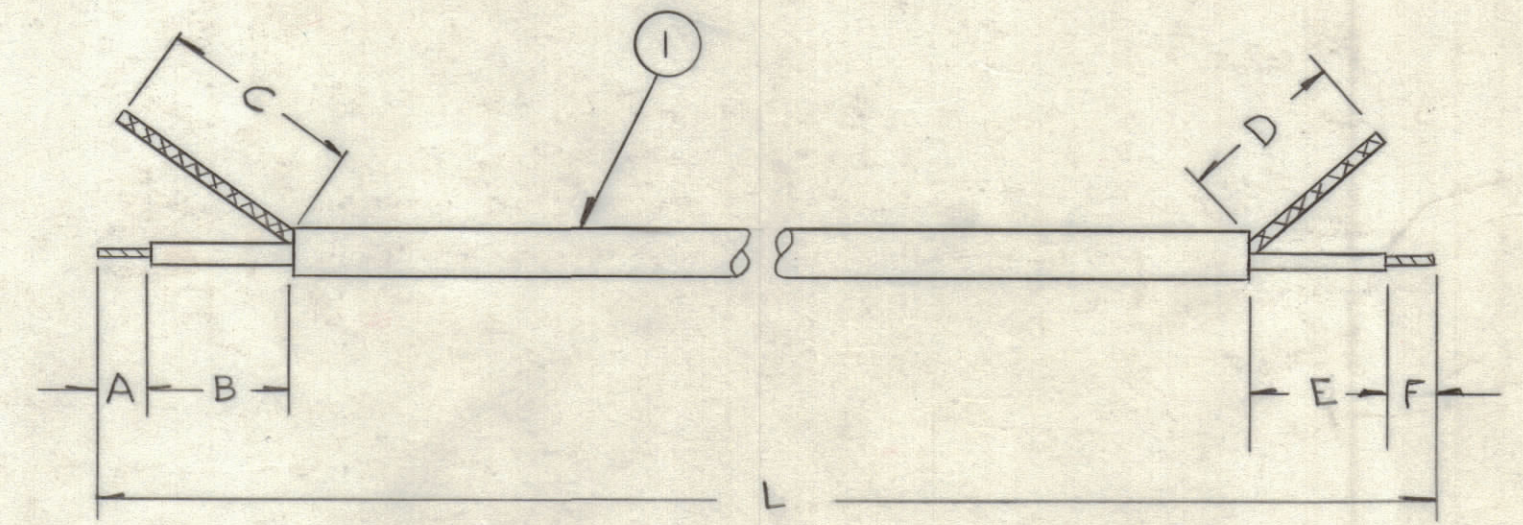
NOTICE TO PERSONS RECEIVING THIS DRAWING

THE TECHNICAL MATERIEL CORPORATION claims proprietary right in the material disclosed herein. This drawing is issued in confidence for engineering information only and may not be reproduced or used to manufacture anything shown herein without permission from THE TECHNICAL MATERIEL CORPORATION to the user. This drawing is loaned for mutual assistance and is subject to recall at any time.

Property of:
THE TECHNICAL MATERIEL CORPORATION
MAMARONECK, NEW YORK

TMC PART NO.	ITEM I	IMP. OHMS	DIMENSIONS						DIM. L (LENGTH AFTER PROCESSING)	REF. BLANK LENGTHS BEFORE PROCESSING
			A	B	C	D	E	F		
CA-642-1	RG-188/U	50	3/8	1	4	3/4	1/2	3/8	3 3/4	6 3/8
CA-642-2	RG-188/U	50	3/8	1 1/8	4	3/4	1/2	3/8	4 7/8	7 1/2
CA-642-3	RG-188/U	50	3/8	1 1/4	4	3/4	1/2	3/8	6	8 5/8

OBSOLETE
DIRECTLY REPLACED BY
CA-649
10-31-61

SYM	ZONE	DESCRIPTION	DATE	CH. NO.	DRAFTS	CHECKER	ENG. APP.
A		OBSOLETE, NOTE ADDED	10-31-61	5717	IG	EL	

UNLESS OTHERWISE SPECIFIED:
SCALE

DIMENSIONS ARE IN INCHES
TOLERANCES ON
FRACTIONS ± 1/64 DECIMALS ± .005 ANGLES ± 1/2°

MAXIMUM ALLOWABLE TOLERANCES HAVE BEEN DETERMINED AND ANY DEVIATIONS WILL BE CAUSE FOR REJECTION.
REMOVE ALL BURRS & SHARP EDGES

REQ. PER UNIT	MODEL	SECTION	ASS'Y. NO.	DATE
1 ea.	GPE-1			9-14-61

REQ. ITEM	PART NO.	DESCRIPTION	SYMBOL
		THE TECHNICAL MATERIEL CORP. MAMARONECK, NEW YORK	
		CABLE R.F.	
		MATERIAL	
		TYPE & TEMPER	
		HEAT TREAT. SPEC.	
		FINISH & SPEC. NO.	
		ELEC. DES. APP.	
		MECH. DES. APP.	
		SHEET OF	

Handwritten notes: R. LOPEZ 9-13-61, DRAWN, ab, CHECKED, FINAL APPROVAL, CA-642 A