

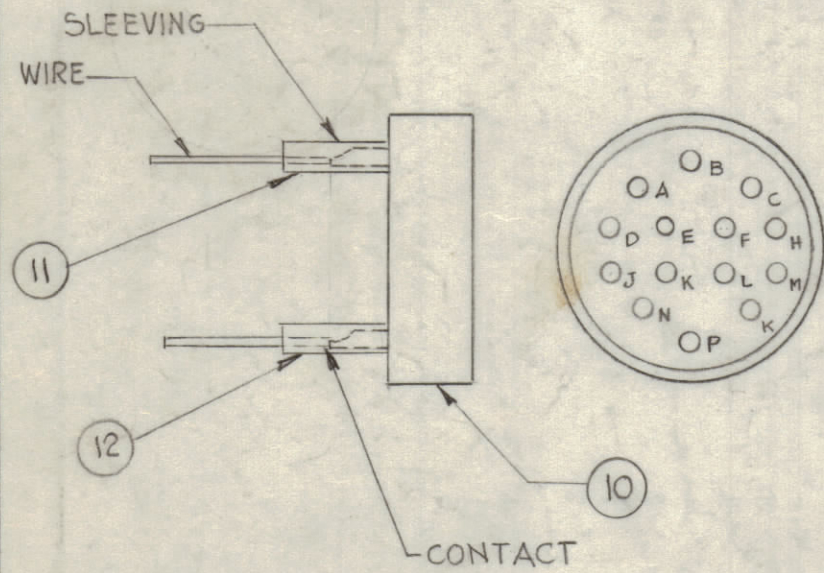
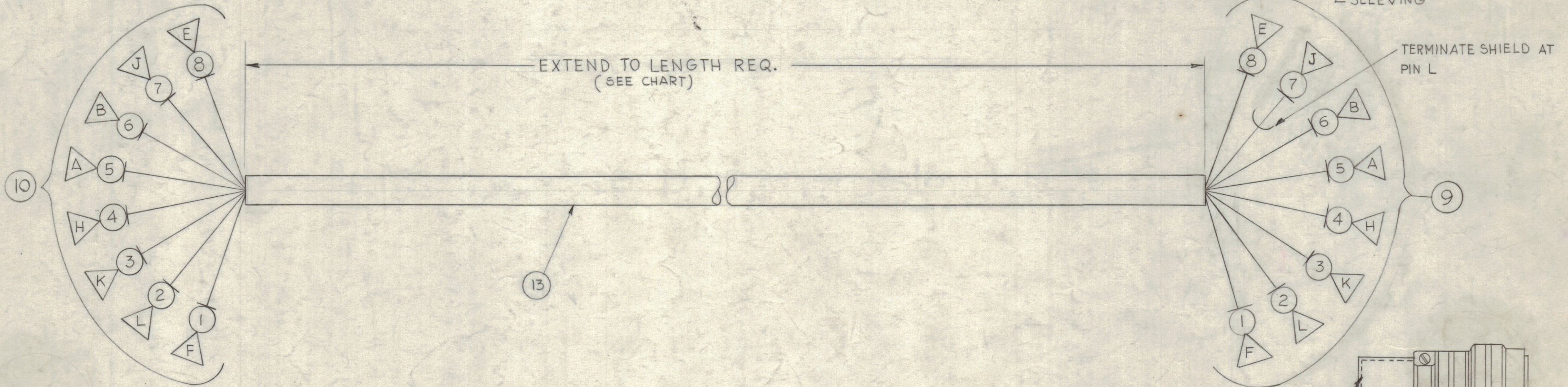
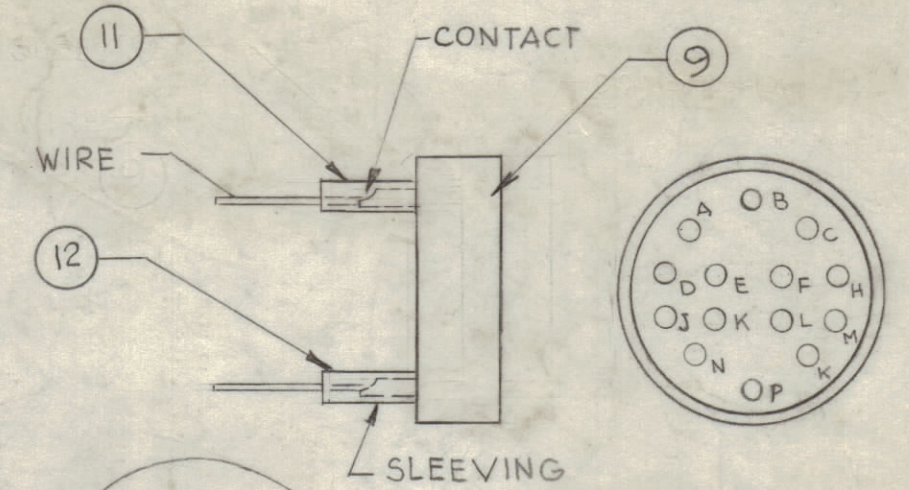
| TMC PART NO. | LENGTH INCHES |
|--------------|---------------|
| CA-661-1 | 72" |
| CA-661-2 | 90" |
| CA-661-3 | 105" |

NOTICE TO PERSONS RECEIVING THIS DRAWING

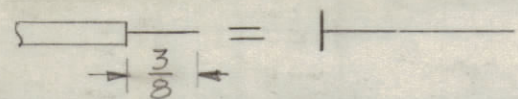
THE TECHNICAL MATERIEL CORPORATION claims proprietary right in the material disclosed hereon. This drawing is issued in confidence for engineering information only and may not be reproduced or used to manufacture anything shown hereon without permission from THE TECHNICAL MATERIEL CORPORATION to the user. This drawing is loaned for mutual assistance and is subject to recall at any time.

Property of:
THE TECHNICAL MATERIEL CORPORATION
 MAMARONECK, NEW YORK

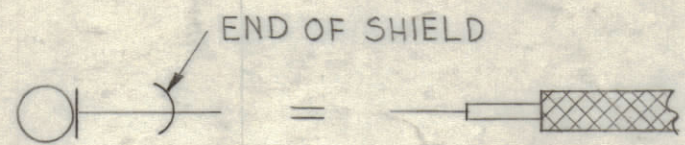
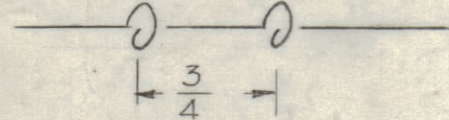
ITEM (11) TO PINS A, B, S, H, K
 ITEM (12) TO PINS E, F, L



THIS SYMBOL DENOTES END OF INSULATION & NAIL DRIVING POINT. WIRE MUST BE STRIPPED 1/2" BEYOND THIS POINT & TINNED 3/8", UNLESS OTHERWISE SPECIFIED



WIRES SHOULD BE PLACED IN CABLE IN NUMERICAL SEQUENCE AS THEY APPEAR IN ITEM COLUMN. SPACE LACING APPROX. 3/4" APART



ABOVE SYMBOL DENOTES END OF SHIELD

| REQ. | ITEM | PART NO. | DESCRIPTION | SYMBOL |
|------|------|---------------|-------------------------------------|--------|
| 2 | 16 | MS-3420-12A | BUSHING, CABLE | |
| 2 | 15 | MS-3420-10A | BUSHING, CABLE | |
| X | 14 | BS-100 | SOLDER, SOFT | |
| X | 13 | PX-100-1- 330 | SLEEVING, SIZE 0 | BLACK |
| X | 12 | PX-100-1- 106 | SLEEVING, SIZE 10 | BLACK |
| X | 11 | PX-100-1- 085 | SLEEVING, SIZE 12 | BLACK |
| 1 | 10 | PL-212-2 | CONNECTOR, PLUG | |
| 1 | 9 | PL-212-1 | CONNECTOR, PLUG | |
| X | 8 | MWC18 (16) U9 | WIRE, ELECTRICAL | WHITE |
| X | 7 | MWC22 (7) SJ5 | CABLE, INSULATED, SHIELDED W/JACKET | GREEN |
| X | 6 | MWC22 (7) U6 | WIRE, ELECTRICAL | BLUE |
| X | 5 | MWC22 (7) U8 | | GREY |
| X | 4 | MWC22 (7) U7 | | VIOLET |
| X | 3 | MWC22 (7) U2 | | RED |
| X | 2 | MWC16 (19) U0 | | BLACK |
| X | 1 | MWC16 (19) U1 | WIRE, ELECTRICAL | BROWN |

| SYM | ZONE | DESCRIPTION | DATE | CH. NO. | DRAFTS | CHECKER | ENG. APP. |
|-----|------|--------------------------------|---------|---------|--------|---------|-----------|
| D | H7 | CA-661-3 ADDED TO CHART | 10-9-64 | 12594 | MS | | |
| C | - | BUILDUP UPDATED & STANDARDIZED | 8-17-63 | 9956 | | | |
| B | H7 | CA-661-2 ADDED TO CHART | 5-1-63 | 8923 | | | |
| A | CZ | ITEMS (15) & (16) ADDED | 1-9-63 | 7993 | | | |

UNLESS OTHERWISE SPECIFIED:
 DIMENSIONS ARE IN INCHES
 TOLERANCES ON FRACTIONS ± 1/64 DECIMALS ± .005 ANGLES ± 1/2°

SCALE DO NOT SCALE

MAXIMUM ALLOWABLE TOLERANCES HAVE BEEN DETERMINED AND ANY DEVIATIONS WILL BE CAUSE FOR REJECTION. REMOVE ALL BURRS & SHARP EDGES

| REQ. PER UNIT | MODEL | SECTION | ASS'Y. NO. | DATE |
|---------------|--------|---------|------------|---------|
| 1 | AFC-3 | | | 9-17-63 |
| | AFC-2A | | | 12-7-61 |

| REQ. | ITEM | PART NO. | DESCRIPTION | SYMBOL |
|--|------|-------------------|-------------|-----------------|
| THE TECHNICAL MATERIEL CORP. MAMARONECK, NEW YORK | | | | |
| CABLE, INTERCONNECT (SBS-1 TO AFC-2) | | | | |
| DRAWN | | CHECKED | | FINAL APPROVAL |
| G.D.L. | | J. De | | J.M. |
| TYPE & TEMPER | | HEAT TREAT. SPEC. | | |
| FINISH & SPEC. NO. | | ELEC. DES. APP. | | MECH. DES. APP. |
| | | CA-661 | | D |
| | | SHEET | | OF |