

7

6

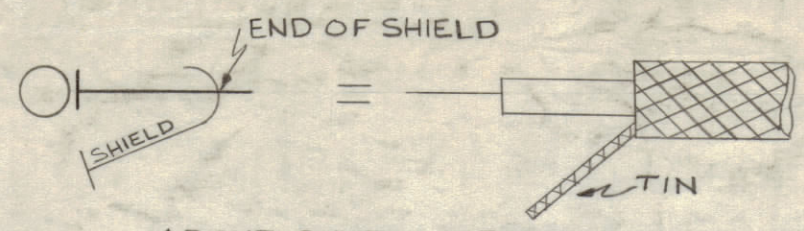
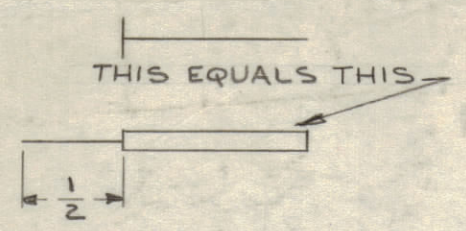
5

4

3

2

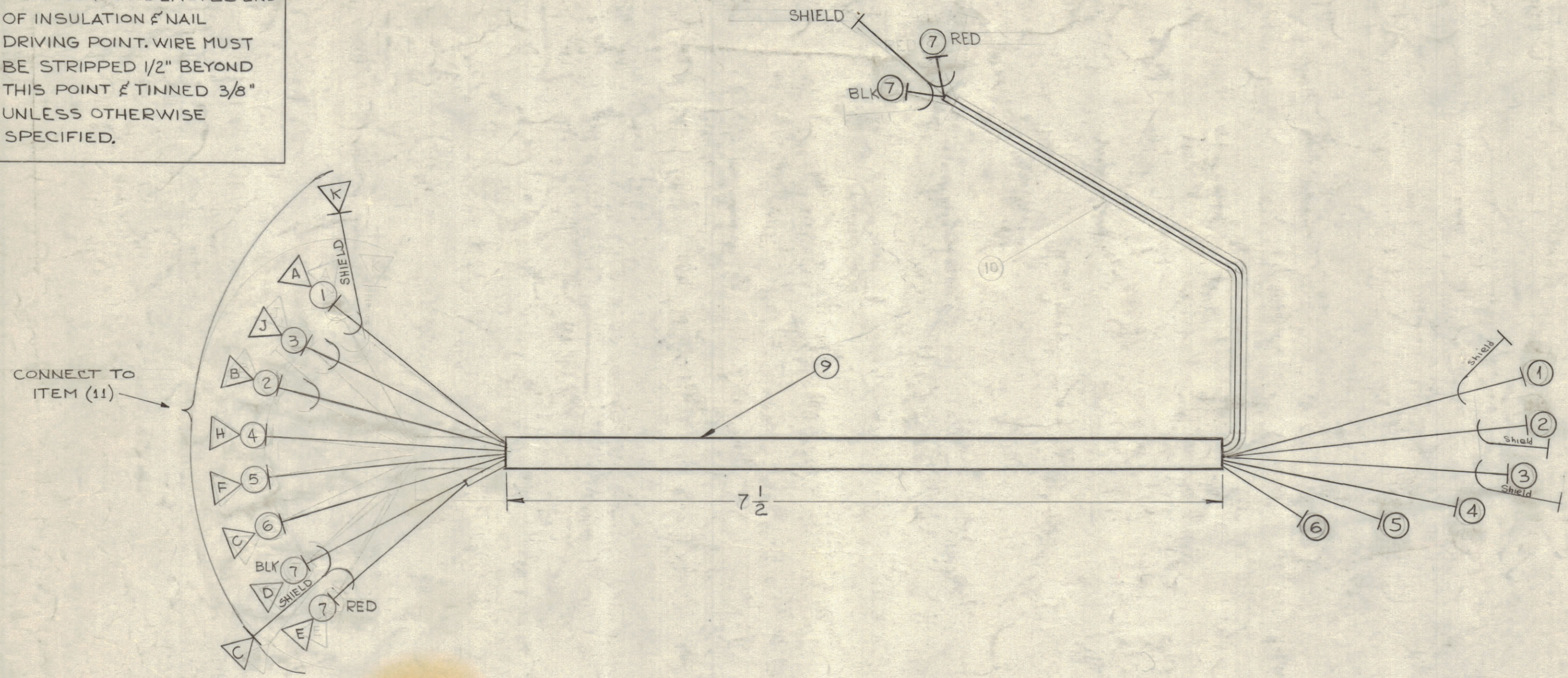
1



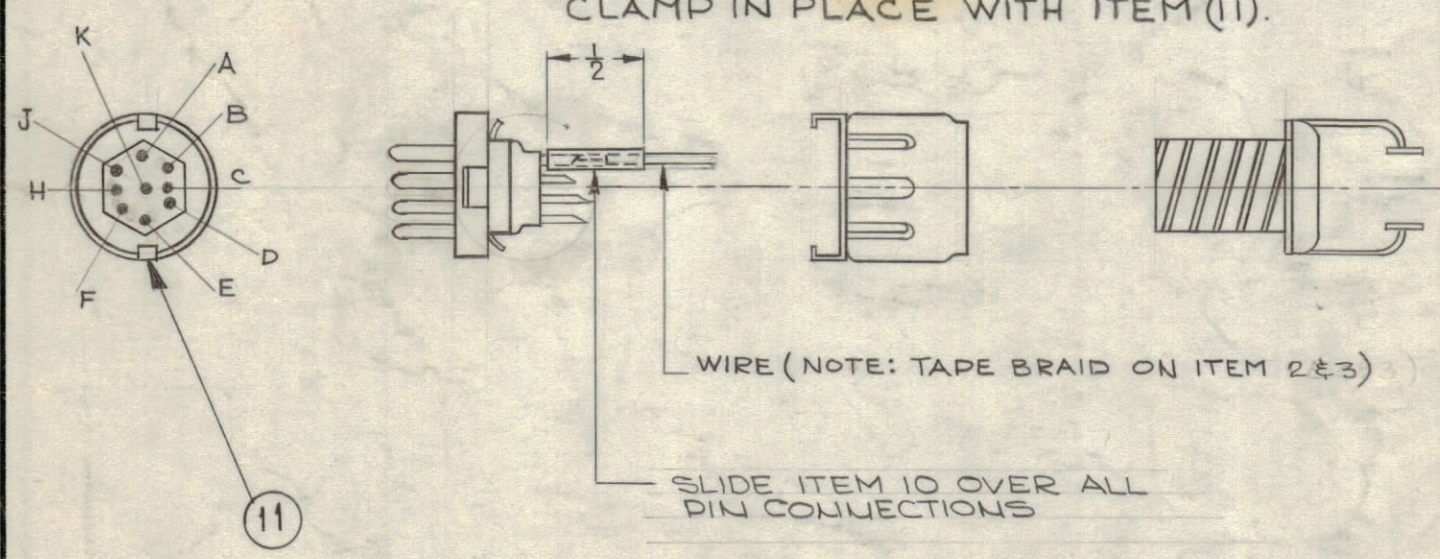
○ - DENOTES ITEM NO.  
 △ - DENOTES PIN NO.

REVISIONS						
ZONE	SYM	DESCRIPTION	DATE	E.M.N. NO.	DRAFT	CHKD
FC	A	TERMINATED SHIELD OF CONNECTOR 1 TO PIN K, ADDED 5 1/4" 8 1/2"	8-20-62	7092	SG	PLG
B2, B2	B	ITEM (3) WAS MWC 22(7) U92, ITEMS (7) & (8) WERE MWC 22(7) U90, U93	3-15-63	8521	RC	PLG
E5-F6	C	DIMENSION ITEM (9) WAS 8 1/2" - ITEM (1) "K" CONN. LENGTHENED DIM. AS 1/4"	7-9-63	9494	GDL	PLG
C2		ITEM (10) WAS 5/2" PX-100-1-.148, (9) WAS PX-100-1-.330				
C7	D	ADDED SLEEVING & NOTE ON CONNECTOR	11-12-63	10408	RC	PLG
GF-34		DELETED ITEM (10) FROM ITEM (7) ON PICTORIAL				

THIS SYMBOL DENOTES END OF INSULATION & NAIL DRIVING POINT. WIRE MUST BE STRIPPED 1/2" BEYOND THIS POINT & TINNED 3/8" UNLESS OTHERWISE SPECIFIED.



SLIDE ITEM (9) ALONG CABLE & CLAMP IN PLACE WITH ITEM (11).



CA-710  
D

REQ'D.	ITEM	PART NUMBER	DESCRIPTION	SYMBOL
X	13	TA-100-2	TAPE, ELECTRICAL, MYLAR	
X	12	BS-100	SOFT SOLDER	
	1	PL-189-9P	CONNECTOR, PLUG, MINATURE HEX.	P5006
	4 1/2"	PX-100-1-034	INSULATION, SLEEVING	BLK.
	7 1/2"	PX-100-1-330	INSULATION, SLEEVING	BLK.
	8		DELETED	
	16"	W1-142-2	CABLE, SPECIAL PURPOSE, SHIELDED	RED/BLK
	11 1/4"	MWC 20(7) U0	CABLE, INSULATED	BLK.
	11 3/4"	22(7) U1		BRN.
	12 3/4"	22(7) U2		RED
	13 1/4"	MWC 22(7) SJ 92	CABLE, INSULATED, SHIELDED	WH/RED
	13 1/2"	RG-188/U	CABLE - CO AXIAL	
	13 1/2"	RG-188/U	CABLE - CO AXIAL	

WESCHLER LIST OF MATERIAL			
MATERIAL	THE TECHNICAL MATERIEL CORP. MAMARONECK, NEW YORK		
FINISH	TITLE		
///	CABLE ASSY. PRODUCT DETECTOR OSC (AFC-3)		
///	DRAWN	DATE	FINAL APPROVAL
	5-16-62		
	CHECKED	DATE	
	ELECT. DES.	DATE	
	MECH. DES.	DATE	

NOTICE TO PERSONS RECEIVING THIS DRAWING  
 THE TECHNICAL MATERIEL CORPORATION claims proprietary right in the material disclosed hereon. This drawing is issued in confidence for engineering information only and may not be reproduced or used to manufacture anything shown hereon without permission from THE TECHNICAL MATERIEL CORPORATION to the user. This drawing is loaned for mutual assistance and is subject to recall at any time.

Property of:  
 THE TECHNICAL MATERIEL CORPORATION  
 MAMARONECK, NEW YORK

SLIDE ITEM (9) ALONG CABLE & CLAMP IN PLACE WITH ITEM (11)

1	AFC-3	2504
QTY./UNIT	MODEL USED ON	ASS'Y. NO.
SCALE	CODE	

THE CONTENTS OF THIS DRAWING ARE THE EXCLUSIVE PROPERTY OF THE TECHNICAL MATERIEL CORP. ITS UNAUTHORIZED USE OR REPRODUCTION IN WHOLE OR IN PART IS STRICTLY FORBIDDEN.

DECIMALS	TOLERANCES	FRACTIONS	ANGLES
.X ± .05		± 1/64	
.XX ± .01			
.XXX ± .005		± 0° 30'	

NOTES

CA-710  
D

7

6

5

4

3

2

1