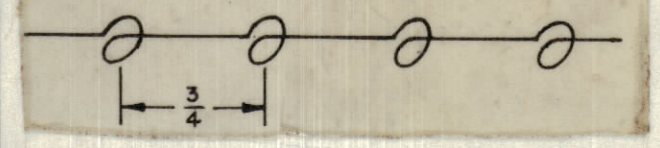


THIS SYMBOL DENOTES END OF INSULATION AND NAIL DRIVING POINT. WIRE MUST BE STRIPPED 3/4" BEYOND THIS POINT AND TINNED 1/2" UNLESS OTHERWISE SPECIFIED.

WIRES SHOULD BE PLACED IN CABLE IN NUMERICAL SEQUENCE AS THEY APPEAR IN ITEM COLUMN. SPACE LACING APPROXIMATELY 3/4" APART.



— SYMBOL NOTES —

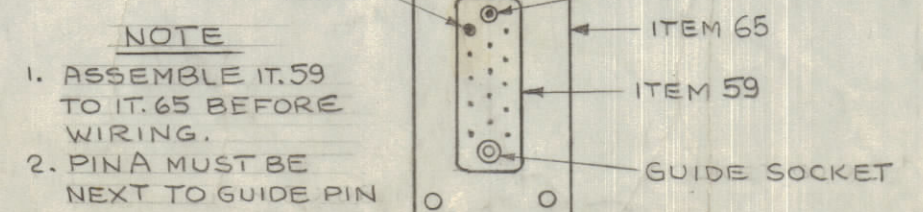
- DENOTES ITEM No'S
- △ DENOTES PIN No'S
- DENOTES BREAKOUT POINT

REVISIONS						
ZONE	SYM	DESCRIPTION	DATE	E.M.N. NO.	DRAFT	CHKD
X		EXPERIMENTAL RELEASE	5-15-64	#	G.D.L.	
X1		J1317-RECEPTACLE ORIENTATION DETAIL ADDED	7-9-64	#	K.B.	
X2		ITEM 26 WAS MCW20(7)U95	7-28-64	#	G.D.L.	
ORIGINAL RELEASE FOR PRODUCTION						
FB,G11	A	ON PICT. CALLOUT #61 WAS #62 & #62 WAS #61 R1336 WAS L1336	9-18-64		J.F.	
	B	REVISED & UPDATED BREAKOUTS 1,2,3,9,10,11	6-20-67	18285	L.A.K.	

1	65	MS-3798	PLATE, ADAPTER		
X	64	BS-100	SOLDER, SOFT		
X	63	CD-101-1MW	CORD LACING		
X	62	PX-330-18-1	SLEEVING, INSULATION		
X	61	PX-100-1-294	SLEEVING, INSULATION		
	60	JJ-200-2	CONNECTOR, RECEPTACLE		J1305
	59	JJ-242-5-8	CONNECTOR, RECEPTACLE		J1317
1	1	MWC22(7)U9	J1305 PIN M	J1305 PIN J	
1	15	20(7)U1	J1305 PIN R	A3631, L1305	
9	11	22(7)U96	J1306 PIN 11	J1317 PIN D	
9	11	22(7)U4	J1306 PIN 4	J1317 PIN C	
1	3	20(7)U91	J1305 PIN F	XV1303 GRD	
5	9	20(7)U0	XV1301 GRD	J1306 PIN 8	
14	17	20(7)U2	A3631, C1314	A3648 TERM 6	
13	18	20(7)U96	A3631, C1316	A3648 TERM 4	
2	19	20(7)U3	T1302 PIN 5	A3648 TERM 1	
11	19	20(7)U93	T1302 PIN 7	A3648 TERM 2	
11	11	48	R1322 TERM.	J1317 PIN F	
11	11	47	22(7)U8	J1317 PIN E	
1	3	46	20(7)U0	J1305 PIN L	XV1303 GRD
1	3	45	20(7)U91	J1305 PIN D	XV1303 GRD
3	14	44	22(7)U92	XV1303 PIN 5	A3631 R1334
6	7	43	20(7)U0	XV1302 GRD	P1301 PIN A
3	9	42	20(7)U91	XV1303 GRD	J1306 PIN 15
6	9	41	22(7)U97	A2434 R1337	J1306 PIN 12
8	11	40	22(7)U9	C1239	J1317 PIN M
8	10	39	22(7)U2	C1240	TERM. STDOFF
8	11	38	22(7)U90	C1242	J1317 PIN J
9	11	37	22(7)U97	J1306 PIN 12	J1317 PIN K
10	11	36	22(7)U2	TERM. STANDOFF	J1317 PIN L
8	9	35	22(7)U9	C1239	J1306 PIN 2
5	10	34	20(7)U1	XV1301 PIN 4	XV1304 PIN 9
3	9	33	20(7)U0	XV1303 GRD	J1306 PIN 6
9	12	32	20(7)U1	J1306 PIN 14	A3631 L1305
4	5	31	20(7)U1	XV1302 PIN 3	XV1301 PIN 4
9	13	30	20(7)U96	J1306 PIN 11	A3631 C1316
9	18	29	20(7)U98	J1306 PIN 1	A3648 TERM 5
7	9	28	20(7)U5	P1301 PIN C	J1306 PIN 9
7	9	27	20(7)U95	P1301 PIN H	J1306 PIN 7
7	9	26	MWC20(7)U93	P1301 PIN J	J1306 PIN 5
7	9	25	MWC20(7)U3	P1301 PIN B	J1306 PIN 3
7	12	24	20(7)U7	P1301 PIN E	A3631 L1309
3	9	23	22(7)U92	XV1303 PIN 5	J1306 PIN 10
10	14	22	22(7)U2	TERM STANDOFF	A3631 R1335
11	11	21	20(7)U95	J1317 PIN A	XV1304 PIN 2
2	18	20	20(7)U6	T1302 PIN 6	A3648 TERM 3
12	17	19	20(7)U7	A3631 L1309	A3648 TERM 8
10	11	18	20(7)U0	GRD	J1317 PIN P
1	16	17	22(7)U90	J1305 PIN N	A3631 L1336
11	13	16	22(7)U7	J1317 PIN N	A3631 R1335 & 36
1	15	15	20(7)U98	J1305 PIN B	A3631 L1308
3	12	14	20(7)U98	T1302 PIN 4	A3631 L1308
1	16	13	20(7)U8	J1305 PIN A	A3631 L1307
3	13	12	20(7)U8	T1302 PIN I	A3631 L1307
1	15	11	20(7)U1	J1305 PIN E	A3631 L1305
4	12	10	20(7)U1	XV1302 PIN 3	A3631 L1305
1	16	9	22(7)U9	J1305 PIN M	A3631 L1310
8	13	8	22(7)U9	C1239	A3631 L1310
1	16	7	22(7)U2	J1305 PIN K	A3631 L1302
3	17	6	20(7)U0	XV1303 GRD	A3648 TERM 7
9	14	5	22(7)U2	J1306 PIN 13	A3631 L1303
1	15	4	20(7)U7	J1305 PIN C	A3631 L1309
10	11	3	20(7)U1	XV1304 PIN 9	J1317 PIN R
1	16	2	22(7)U6	J1305 PIN P	A3631 L1304
11	14	1	MWC22(7)U6	J1317 PIN H	A3631 L1304

FROM	TO	REQ'D.	ITEM	PART NUMBER	FROM	DESCRIPTION	TO	SYMBOL
BREAKOUT POINTS								
J ANGER LIST OF MATERIAL								
MATERIAL		THE TECHNICAL MATERIAL CORP.						
FINISH		MAMARONECK, NEW YORK						
		TITLE WIRING HARNESS, BRANCHED						
UNLESS OTHERWISE SPECIFIED		DRAWN G.D.L.		DATE 5-15-64		FINAL APPROVAL		DATE
DIMENSIONS ARE IN INCHES AND INCLUDE CHEMICALLY APPLIED OR PLATED FINISHES		CHECKED		DATE 9-16-64				
DECIMALS ±.005		ELECT. DES. J. Anger		DATE 7-20-64		CA 898		REV. LTR.
TOLERANCES ANGLES ±.005		MECH. DES.		DATE		SHEET		REV. LTR.

NOTES



NOTE
1. ASSEMBLE IT.59 TO IT.65 BEFORE WIRING.
2. PIN A MUST BE NEXT TO GUIDE PIN

QTY/UNIT	MODEL USED ON	ASBY. NO.
SCALE 1:1	CODE A	
THE CONTENTS OF THIS DRAWING ARE THE EXCLUSIVE PROPERTY OF THE TECHNICAL MATERIAL CORP. ITS UNAUTHORIZED USE OR REPRODUCTION IN WHOLE OR IN PART IS STRICTLY FORBIDDEN.		