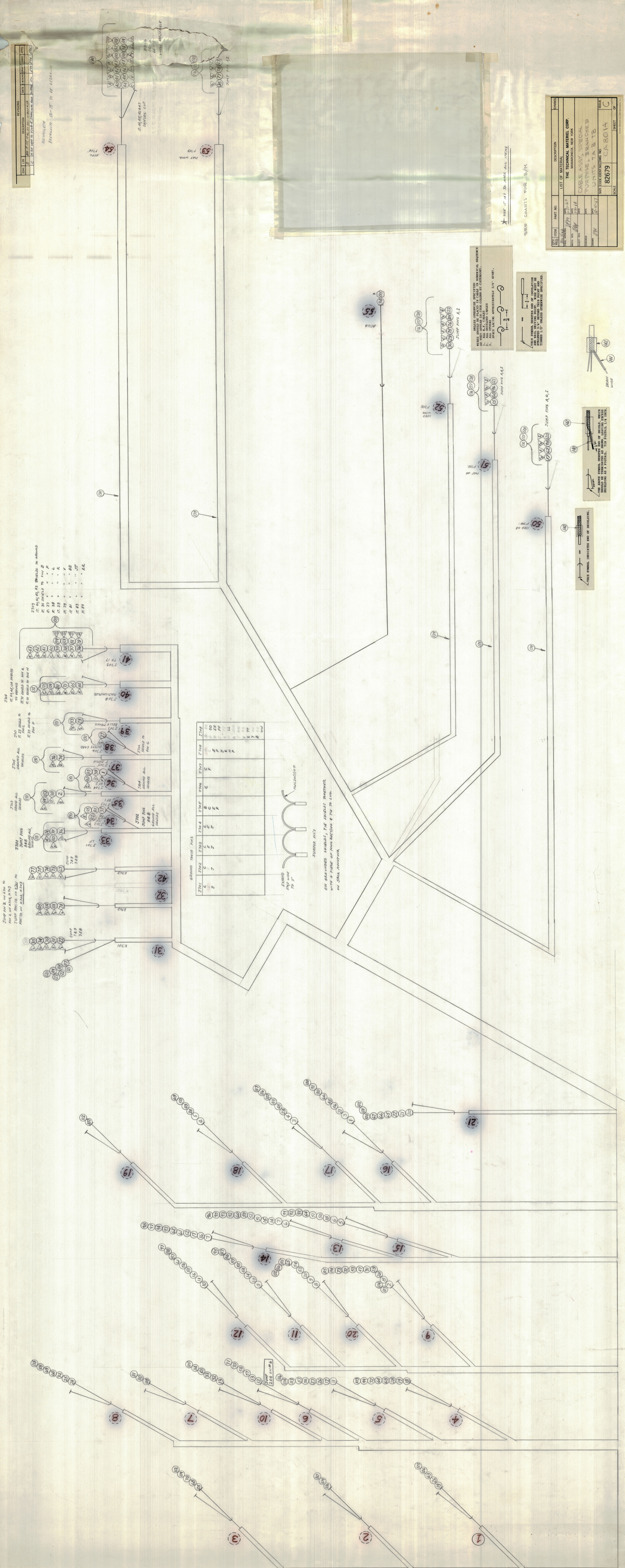


DATE	BY	DESCRIPTION	REVISIONS
10/15/48	W.M.	REVISED TO REFLECT CHANGES TO THE ORIGINAL DRAWING	1
10/15/48	W.M.	REVISED TO REFLECT CHANGES TO THE ORIGINAL DRAWING	2
10/15/48	W.M.	REVISED TO REFLECT CHANGES TO THE ORIGINAL DRAWING	3

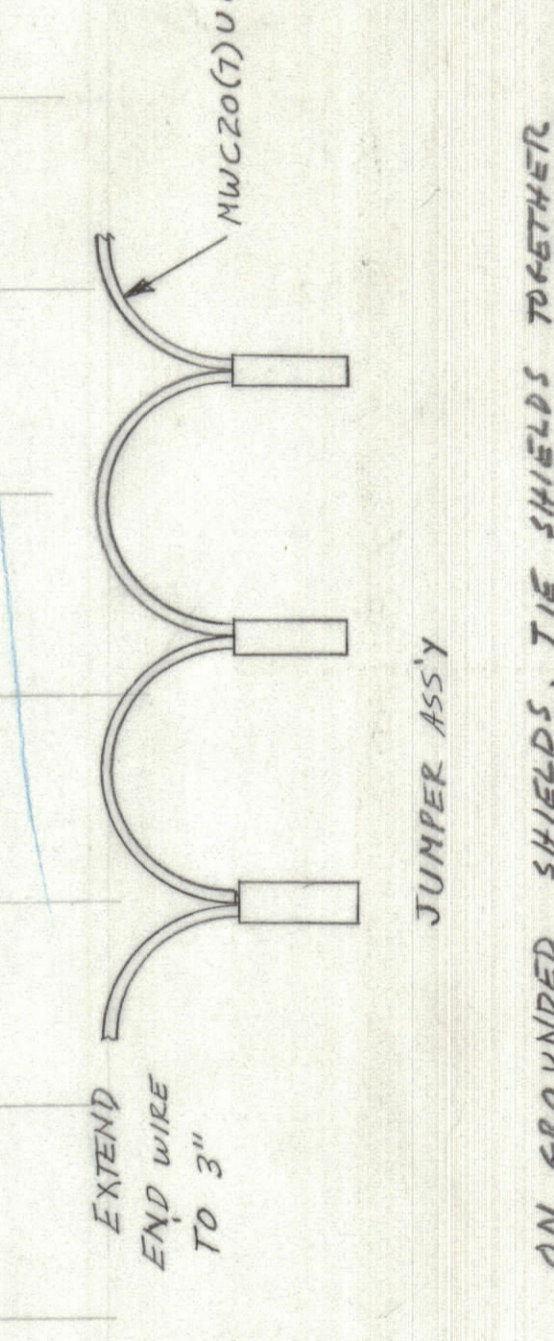
REVISIONS
 DATE BY DESCRIPTION
 10/15/48 W.M. REVISED TO REFLECT CHANGES TO THE ORIGINAL DRAWING 1
 10/15/48 W.M. REVISED TO REFLECT CHANGES TO THE ORIGINAL DRAWING 2
 10/15/48 W.M. REVISED TO REFLECT CHANGES TO THE ORIGINAL DRAWING 3



- IT 45, 46, 48 BRANCHES TO BRANCH
 IT 35 BRANCHES TO PIN B
 IT 36 BRANCHES TO PIN C
 IT 37 BRANCHES TO PIN D
 IT 38 BRANCHES TO PIN E
 IT 39 BRANCHES TO PIN F
 IT 40 BRANCHES TO PIN G
 IT 41 BRANCHES TO PIN H
 IT 42 BRANCHES TO PIN I
 IT 43 BRANCHES TO PIN J
 IT 44 BRANCHES TO PIN K
 IT 45 BRANCHES TO PIN L
 IT 46 BRANCHES TO PIN M
 IT 47 BRANCHES TO PIN N
 IT 48 BRANCHES TO PIN O
 IT 49 BRANCHES TO PIN P
 IT 50 BRANCHES TO PIN Q
 IT 51 BRANCHES TO PIN R
 IT 52 BRANCHES TO PIN S
 IT 53 BRANCHES TO PIN T
 IT 54 BRANCHES TO PIN U
 IT 55 BRANCHES TO PIN V
 IT 56 BRANCHES TO PIN W
 IT 57 BRANCHES TO PIN X
 IT 58 BRANCHES TO PIN Y
 IT 59 BRANCHES TO PIN Z

GROUND TRIPLE PINS

STEP	STEP	STEP	STEP	STEP	STEP	STEP	STEP	STEP	STEP
1	2	3	4	5	6	7	8	9	10
A	B	C	D	E	F	G	H	I	J
K	L	M	N	O	P	Q	R	S	T
U	V	W	X	Y	Z				

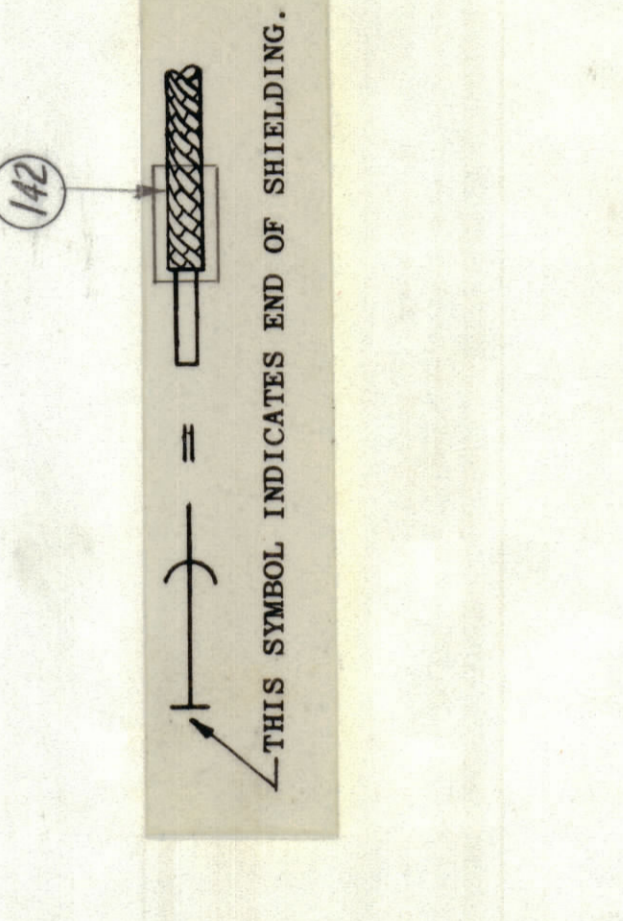
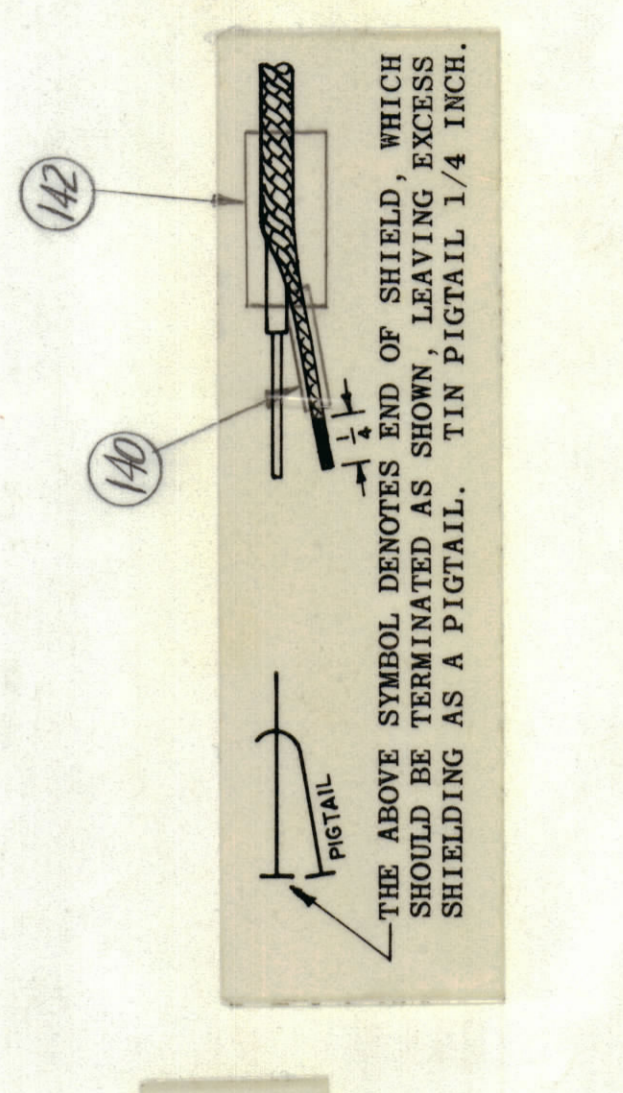
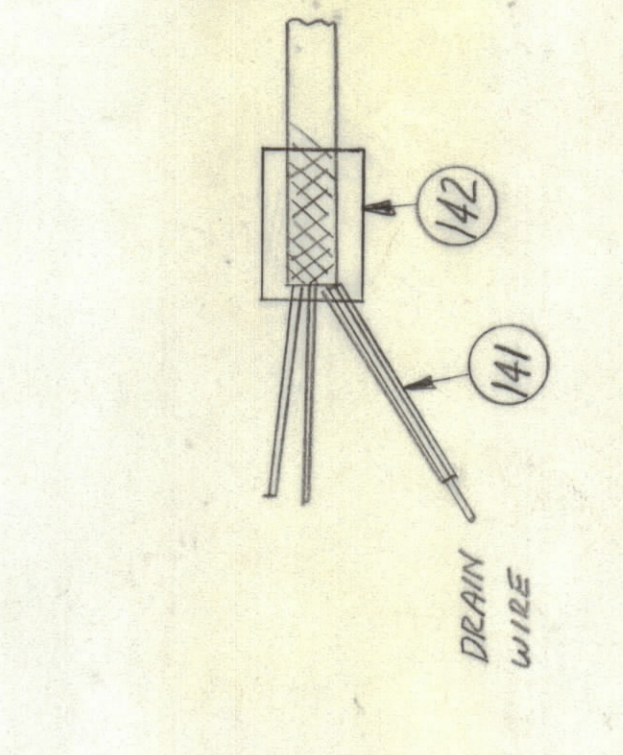


THIS SYMBOL INDICATES END OF BRIDGING.

THIS SYMBOL INDICATES END OF BRIDGING.

THIS SYMBOL INDICATES END OF BRIDGING.

THIS SYMBOL INDICATES END OF BRIDGING.



ITEM NO.	ITEM	PART NO.	DESCRIPTION	QUANTITY
1	CABLE ASSEMBLY	82679	CABLE ASSEMBLY	1
2	SHIELD BRANCHED UNITS TA & TB	82679	SHIELD BRANCHED UNITS TA & TB	1
3	SCALE	82679	SCALE	1
4	ISSUE	82679	ISSUE	1
5	SHEET	82679	SHEET	1

THE TECHNICAL MATERIEL CORP.
 MANHATTAN, NEW YORK