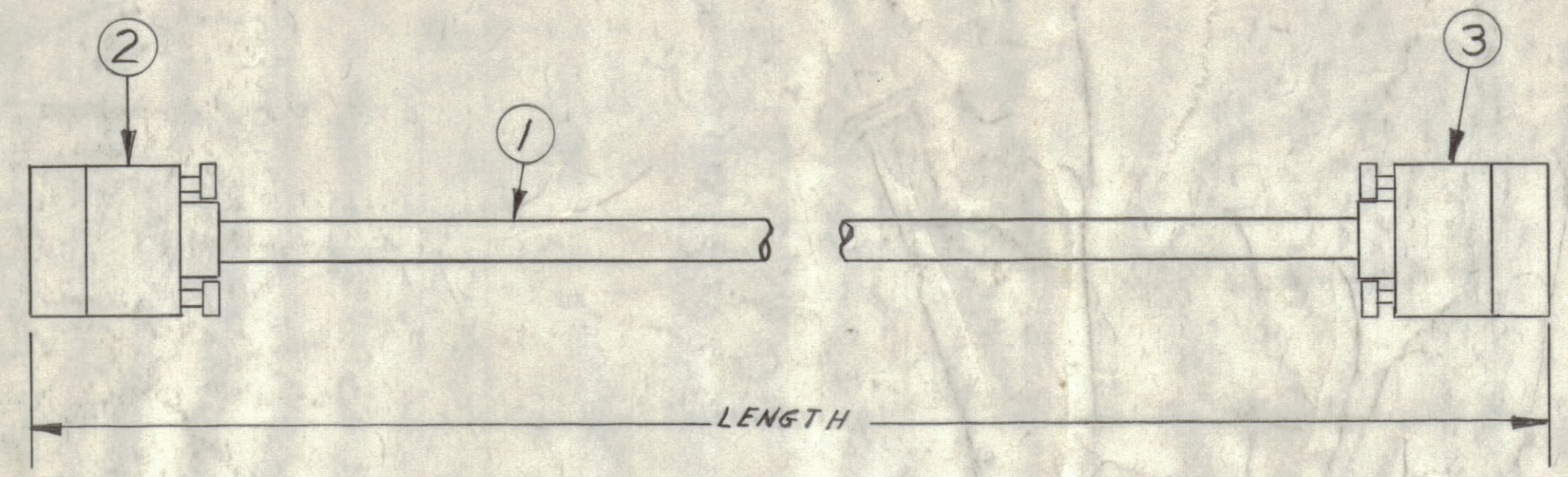
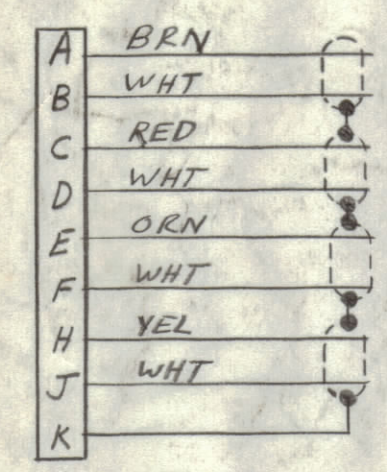


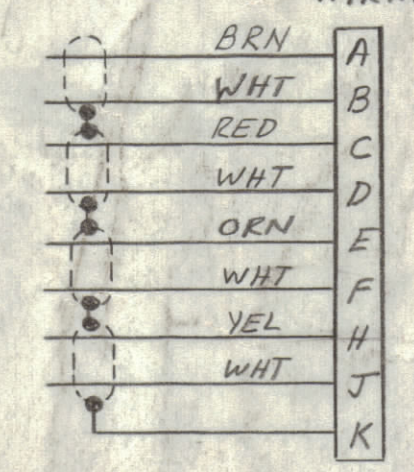
REVISIONS							
ZONE	LTR	DESCRIPTION	DATE	E.M.N.NO	DRAFT	CHKD	APPD



ITEM 2 WIRING



ITEM 3 WIRING

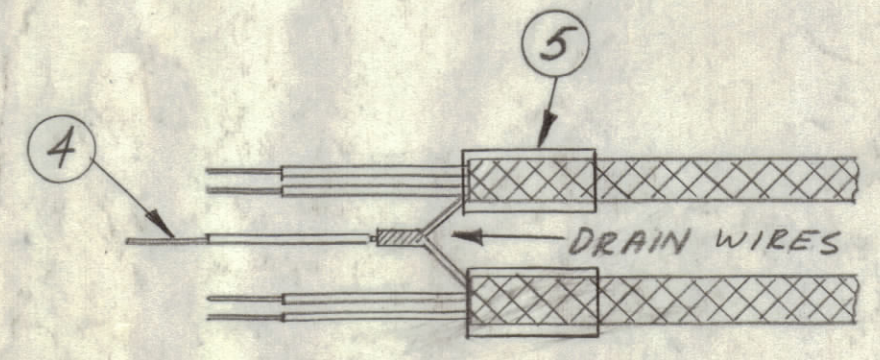


THE PIN TO BE IN THE FOLLOWING FORM.  
CAB020-LENGTH

UNDER 10 FEET EXPRESS IN INCHES  
CAB020-96 = 8 FT. (96 IN.)  
OVER TEN FEET, EXPRESS IN FEET USING  
NEAREST FOOT OR HALF FOOT WITH LETTER "F"  
CAB020-11.5F = 11 1/2 FT.

LENGTH TOLERANCE:

- 1" - 24" ± 1/4"
- 24" - 120" ± 1/2"
- FEET ± 3"



TIE & SOLDER ALL DRAIN WIRES.

QTY. REQ.	ITEM	PART NO.	DESCRIPTION	SYMBOL
X 6	BS100		SOLDER, TIN ALY	
X 5	PX830-12-1		INS. SLUG, SHERIK	
X 4	MWC20(7)U0		WIRE, ELEC, INS.	
1	3	JJ333-9PRS13	CONN, PL, ML 9/C	
1	2	JJ333-9PRS13	CONN, PL, ML 9/C	
X 1	1	WI151-4	CABLE, AUDIO, SHIELDED	

UNLESS OTHERWISE SPECIFIED DIMENSIONS ARE IN INCHES AND INCLUDE CHEMICALLY APPLIED OR PLATED FINISHES		FINAL APPROVAL <i>SM</i>	DATE 1-31-69	<b>THE TECHNICAL MATERIEL CORP.</b> MAMARONECK, NEW YORK  <b>CABLE, PA 210 CONTROL</b>	
TOLERANCES ON		MECH. DES.	DATE		
DECIMALS .X ± .05 .XX ± .01 .XXX ± .005	FRACTIONS ± 1/64 ANGLES ± 0° -30'	ELECT. DES. <i>Ben Noy</i>	DATE 1-24-68		
APPLICATION		CHECKED	DATE	SIZE CODE IDENT. NO. DWG. NO. ISSUE	
CODE		DRAWN <i>SM</i>	DATE 1-3-68	C 82679 CAB020 φ	
MATERIAL		FINISH		SCALE SHEET OF	

QTY / UNIT	MODEL USED ON	ASS'Y NO.

NOTICE TO PERSONS RECEIVING THIS DRAWING  
THE TECHNICAL MATERIEL CORPORATION claims proprietary right in the material disclosed hereon. This drawing is issued in confidence for engineering information only and may not be reproduced or used to manufacture anything shown hereon without permission from THE TECHNICAL MATERIEL CORPORATION to the user. This drawing is loaned for mutual assistance and is subject to recall at any time.