

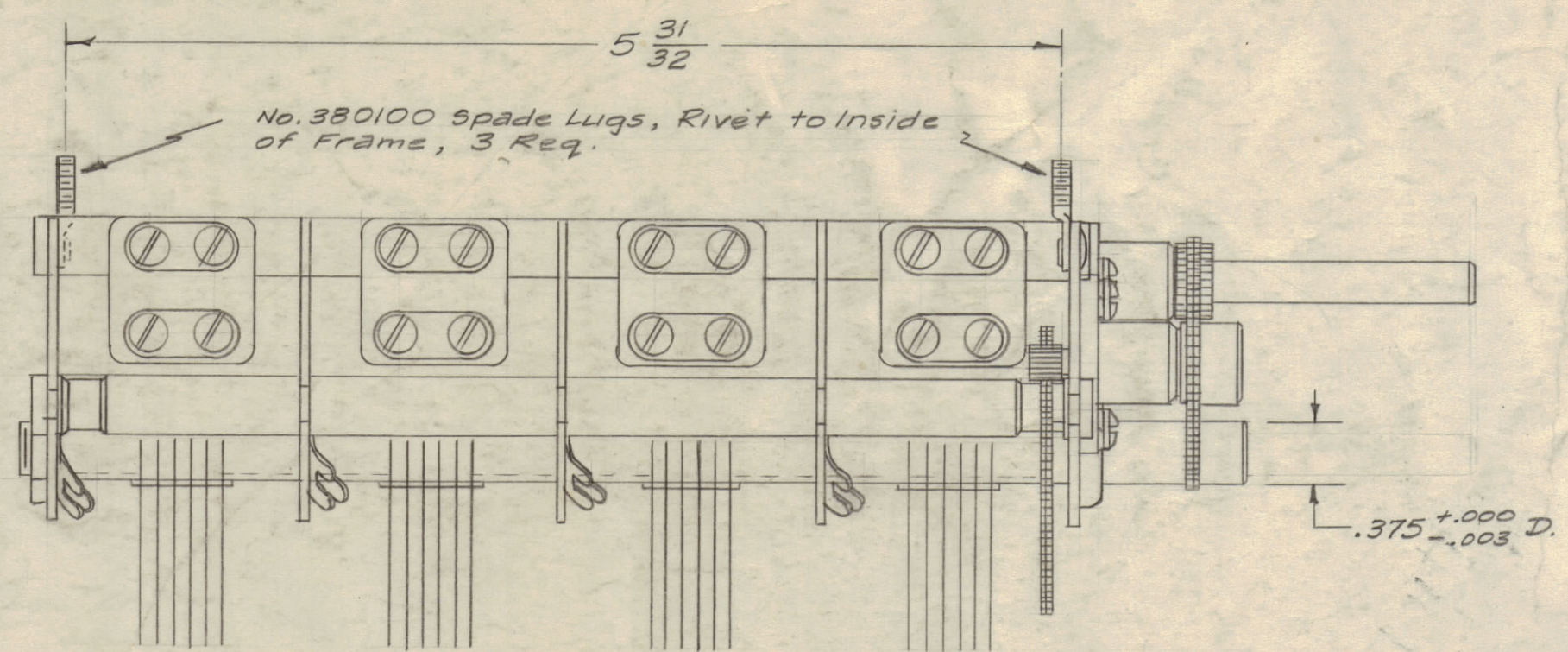
IF IT IS FOUND DESIRABLE TO CHANGE ANY TOLERANCE OR OTHER DETAIL SPECIFIED ON THIS DRAWING NOTIFY THE PURCHASER PROMPTLY.

MAXIMUM ALLOWABLE TOLERANCES HAVE BEEN DETERMINED AND DEVIATIONS WILL BE CAUSE FOR REJECTION. REMOVE ALL BURRS AND SHARP EDGES

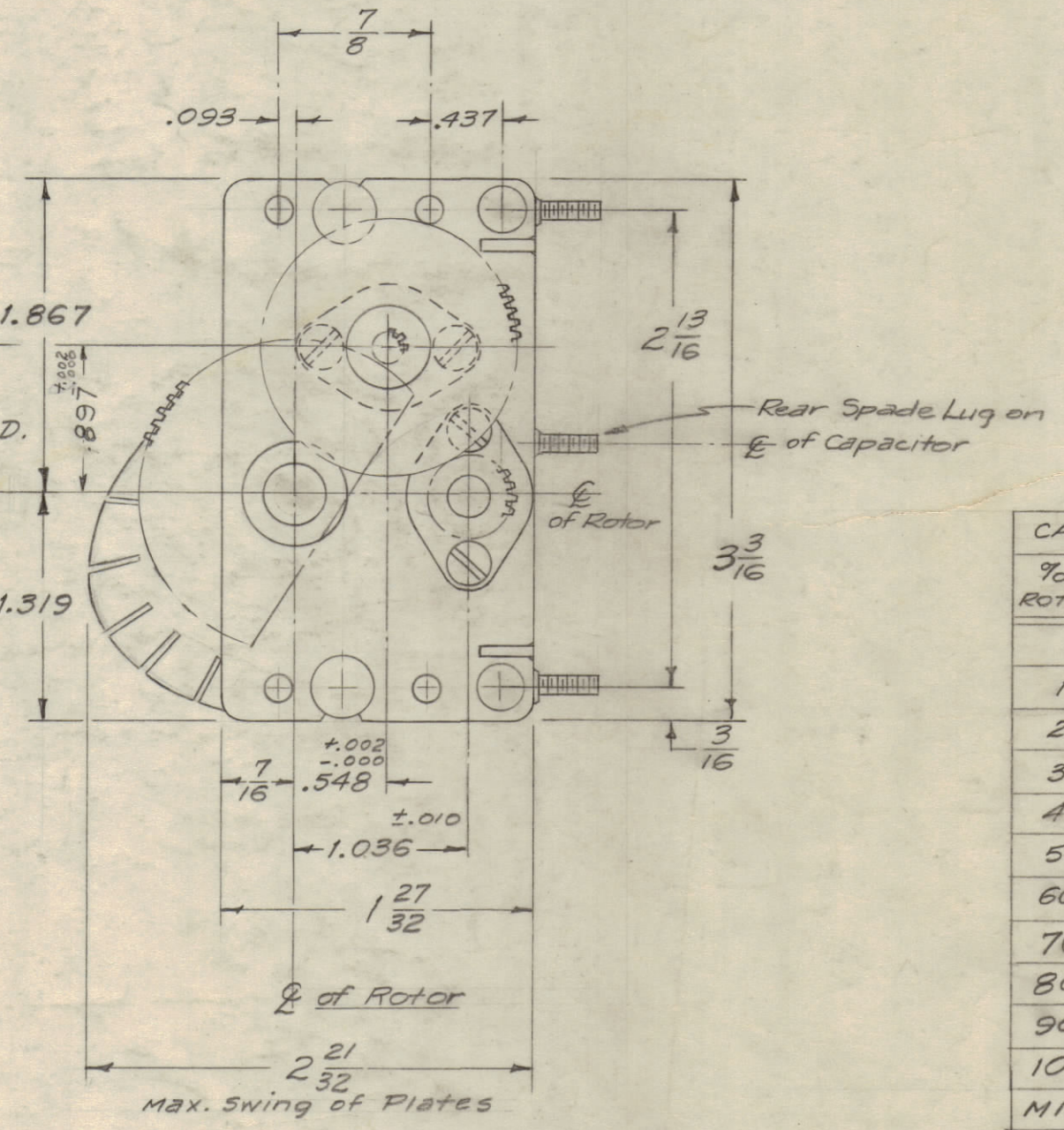
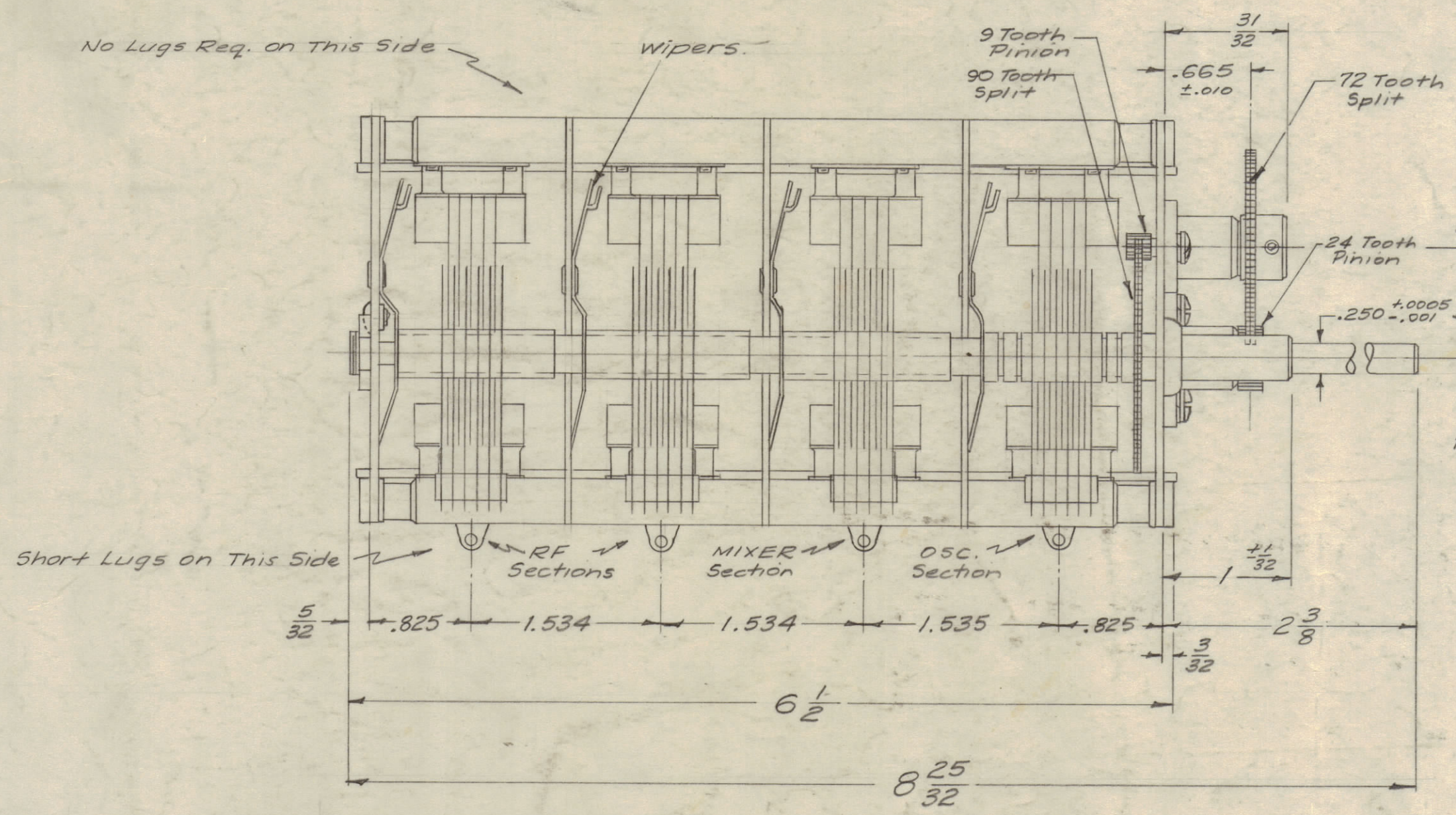
NOTICE TO PERSONS RECEIVING THIS DRAWING

THE TECHNICAL MATERIEL CORPORATION claims proprietary right in the material disclosed hereon. This drawing is issued in confidence for engineering information only and may not be reproduced or used to manufacture anything shown hereon without permission from THE TECHNICAL MATERIEL CORPORATION to the user. This drawing is loaned for mutual assistance and is subject to recall at any time.

Property of:
THE TECHNICAL MATERIEL CORPORATION
MAMARONECK, NEW YORK



MANUFACTURER - Radio Condenser Corp.
 TYPE - Series 417
 FREQUENCY DISTRIBUTION - Curve K
 AIR GAP - .023"
 PLATES - Steel, Cadmium Plate. Slotted end rotor plates, 9 slots ea.
 SECTIONS - 4
 PLATES PER SECTION - 11
 WIPERS - 4
 INSULATION - Ceramic
 CAPACITANCE - 0 to 135 mmfd, Increases Clockwise
 FRAME - Short
 DRIVE RATIO - 30:1 (24 Tooth Pinion to 72 tooth Split gear to 9 Tooth Pinion to 90 Tooth Split gear)
 CALIBRATION - Every 10% (see Chart)
 BACKLASH - Take up on Split Gear Assemblies must be set at no less than 2 teeth. To test for sufficient spring tension, rotate pinion control pinion shaft to bring rotor to fully open position against stop. Release shaft, and the anti-backlash gears should rotate the pinion shaft slightly backwards.
 SLIP TORQUE - 9 TOOTH PINION TO BE DRIVEN THROUGH A SLIP CLUTCH OPERATING AT 8"/OZ.



CB-101 J

CALIBRATION	
% OF ROTATION	CAP. IN MMFD.
0	0
10	2.4
20	7.1
30	13.0
40	20.9
50	32.0
60	47.7
70	68.0
80	90.7
90	113.4
100	135
MIN.	8.3

REF: RADIO CONDENSER CORP. 48 D.P., RATIO = 30:1

ISSUE	ITEM	CHANGED FROM	DATE	CN. NO.	DRAFTS	CHECKER	ENG. APP.
J	1	ADDED SLIP TORQUE NOTE TO DRAWING	3/30/64	11155	A.M.	file	MS
H	1	REDRAWN - WAS 2 SIZE DWG. AS PER RCC DWG. NO. LA-94. SAME ELECTRICALLY AND SAME DIMENSIONS. RATIO BETWEEN CONTROL SHAFT & ROTOR SHAFT CHG'D FROM 10:1 TO 30:1 (NEW GEAR ARRANGEMENT)	11/1/58	520	4	file	RPK

SCALE: FULL - DO NOT SCALE

TOLERANCES: DEC. DIM. ±, FRAC. DIM. ±, ANGULAR DIM. ±

DRILL, PUNCH, COMMERCIAL STOCK SIZES AND MANUFACTURERS TOLERANCES ARE NOT INCLUDED.

REQ PER UNIT	MODEL	PROJECT NO.	ASS'Y. NO.	DATE
1	FFRD-8B		A-229	
1	FFRD-7B		A-229	
1	FFRD-8A		A-229	
1	FFRD-7A		A-229	
1	FFRD-6A		A-229	
1	FFRD-5A		A-229	
1	FFRD-3M		A-229	

USED ON

REQ.	ITEM	PART NO.	DESCRIPTION	SYMBOL
THE TECHNICAL MATERIEL CORP. MAMARONECK, NEW YORK				
CAPACITOR, VARIABLE, AIR				
(0-135 mfd)				
MATERIAL		WEIGHT PER PC.		
TYPE & TEMPER		16 11/16 RPK		
HEAT TREAT. SPEC.		ELEC. DES. APP. MECH. DES. APP.		
FINISH & SPEC. NO.		CHECKED FINAL APPROVAL		
CB-101 J				