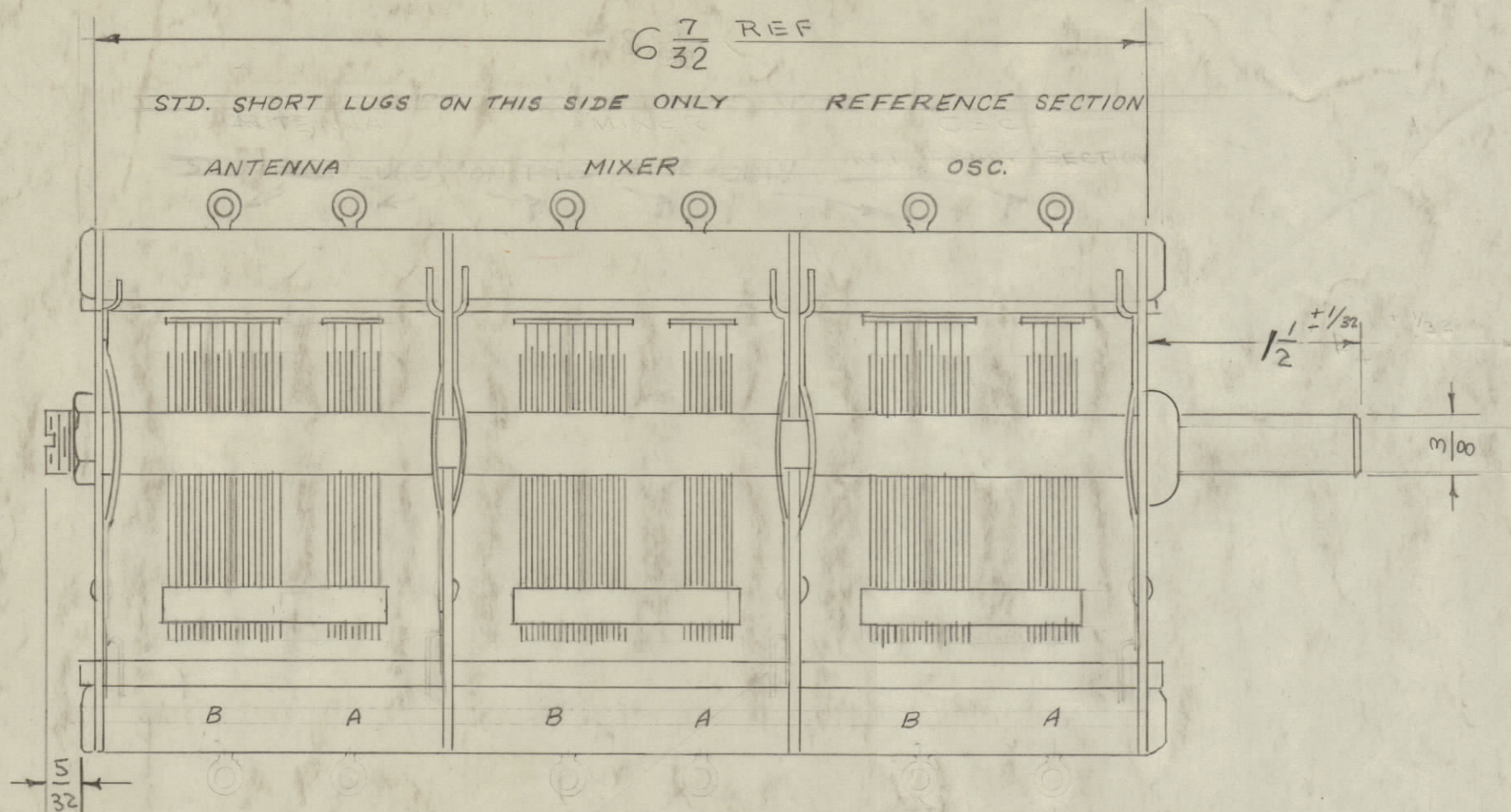


IF IT IS FOUND DESIRABLE TO CHANGE ANY TOLERANCE OR OTHER DETAIL SPECIFIED ON THIS DRAWING NOTIFY THE PURCHASER PROMPTLY.
 MAXIMUM ALLOWABLE TOLERANCES HAVE BEEN DETERMINED AND DEVIATIONS WILL BE CAUSE FOR REJECTION. REMOVE ALL BURRS AND SHARP EDGES

SERIES 321 TYPE "K"
 CAPACITANCE m m f.

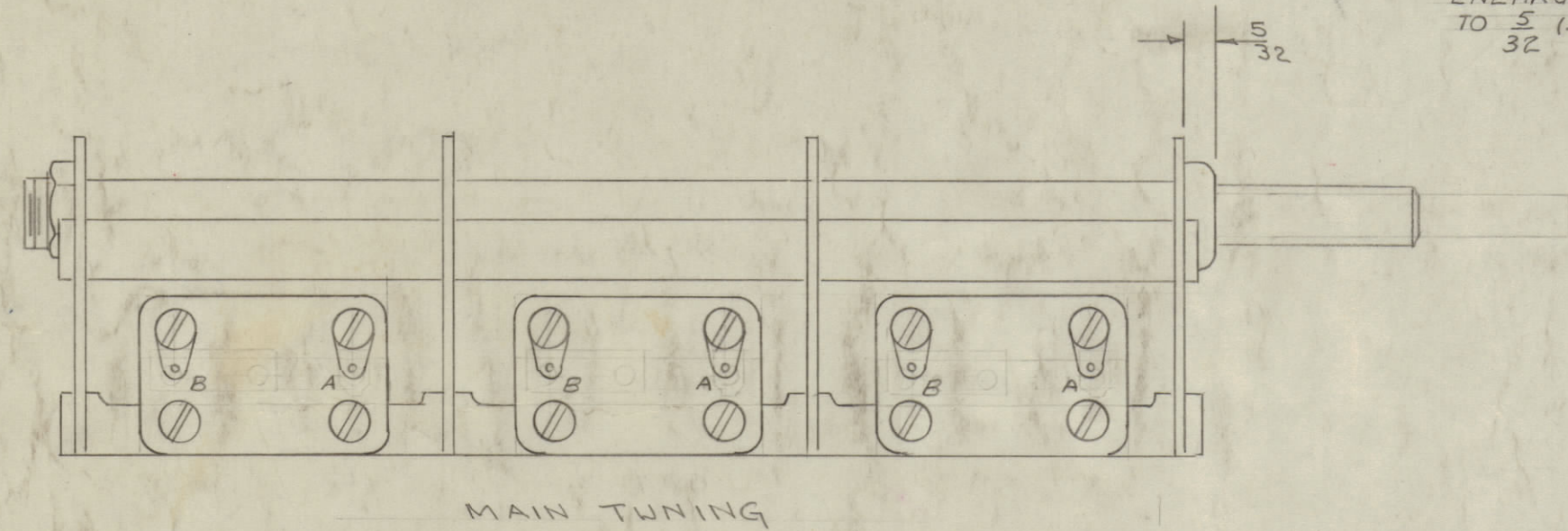
% ROTATION	11 PLATES (A) 6 ROTOR, 5 STATOR	15 PLATES (B) 8 ROTOR, 7 STATOR
0	0	0
10	2.4	3.3
20	7.1	10.0
25	9.9	13.9
30	13.0	18.3
40	20.9	29.2
50	32.0	44.7
60	47.7	66.8
70	68.0	95.3
75	79.2	110.9
80	90.7	127.0
90	113.4	158.7
100	135.0	189.0
MIN	8.5-9.5	9.0-10.0

SERIES 321 TYPE "K" - RADIO CONDENSER MFG. CO.
 TYPE - STRAIGHT LINE FREQUENCY.
 THREE SECTIONS - SEE CHART
 ROTOR & STATOR PLATES - ALUMINUM
 WHICH ARE SWAGED, STAKED
 TO ROTOR SHAFT, AND STATOR
 BRACKET RESPECTIVELY.
 WIPERS - 6 ALL ON SHORT SIDE.
 STATOR INSULATION - CERAMIC.
 ROTOR TENSION - 12" OZ. MAX.
 ROTATION - CAPACITY INCREASES COUNTER-
 CLOCKWISE.
 NOMINAL AIR GAP - 0.0235"

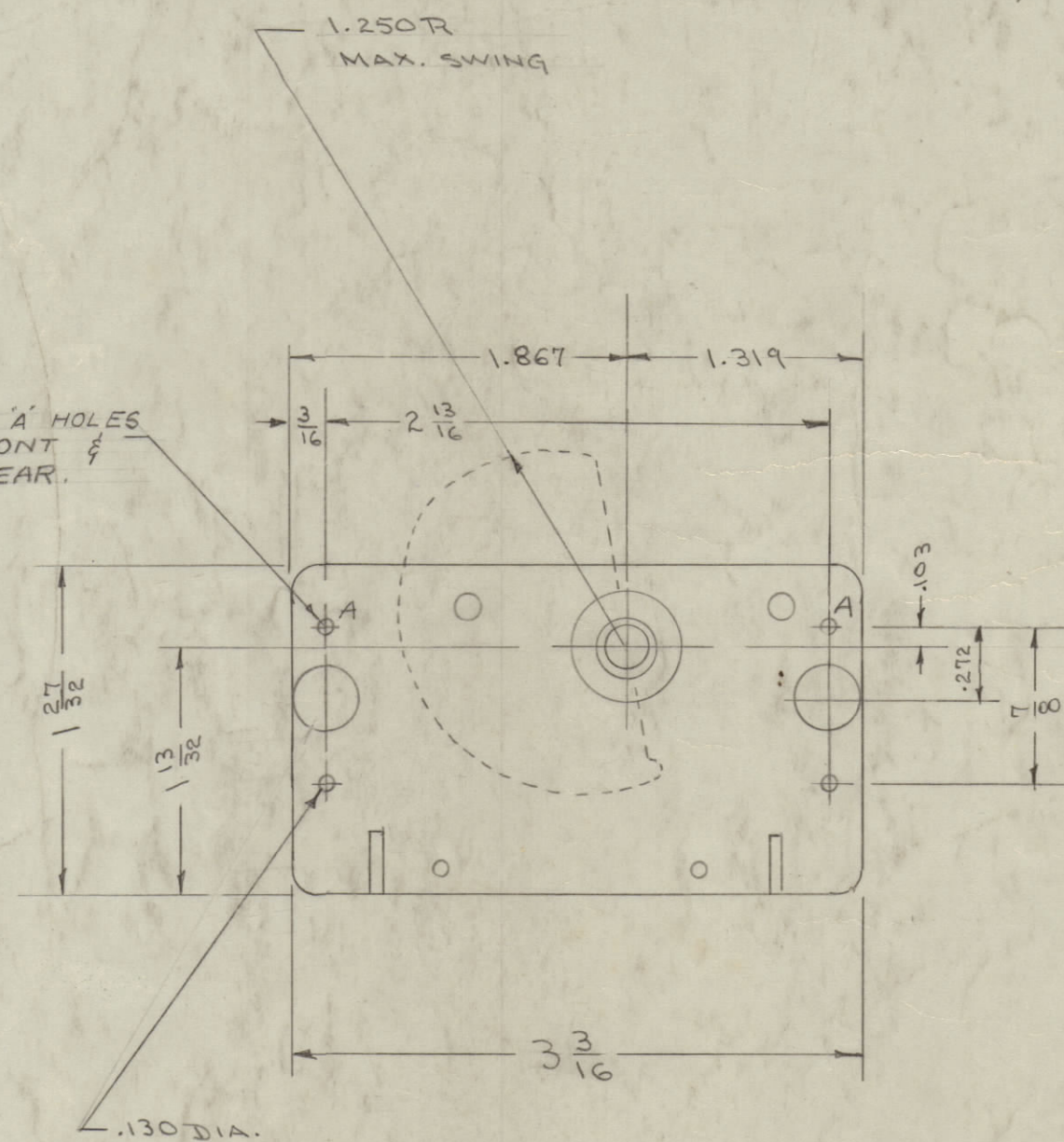


OSCILLATOR SECTION OF CONDENSER CALIBRATED
 AT 25%, 50%, 75%, 100% ROTATION (TOLERANCE ±(1% + 1mm F))
 ANTENNA & MIXER SECTIONS TO BE TRACKED TO
 OSCILLATOR SECTION AT 25%, 50%, 75%, 100%
 (TOLERANCE ±1mm F.)

SECTION	PLATES	ROTOR	STATOR
A	11	6	5
B	15	8	7



ENLARGE CORRESPONDING 'A' HOLES
 TO 5/16 (1.56) DIA. (2) IN FRONT &
 3/2 (2) IN REAR.



CB-116 J

NOTE:
 PARALLEL CAPACITANCE PER SECTION
 EQUALS SUM OF (11 + 15)
 PLATE CAPACITORS FOR A PARTICULAR
 ROTATION.

ISSUE	ITEM	CHANGED FROM	DATE	CN. NO.	DRAFTS	CHECKER	ENG. APP.
J	1	TOL. WAS ±.5 mmf	3/1/56	10	13	HH	A.J.J.
I	1	'A' HOLE DETAIL ADDED	1-6-56	9	13	HH	A.J.J.
H	1	CHART - SECTION ADDED	9-16-55	8	JADE	13	G.T.O.
G	1	SHAFT WAS 1 1/4	6/17/55	7	WDC	WDC	HH
F	2	MINIMUM CLARIFIED					
F	1	6 7/32 WAS 8 9/16	3/2/55	6	13	HH	G.T.O.
E	1	CERAMIC INS. WAS BAKELITE	3-25-55	5	13	G.T.O.	HH
E	3	8.5 WAS 7.3					
E	2	9.0 " 7.9	2/1/55	4	WDC	JADE	HH
D	1	CALIBRATION SPEC. CHANGED					
C	2	1 1/4 WAS 2 1/4	2/4/55	3	WDC	WDC	HH
C	1	SHAFT WAS V4D.					
B	1	WIPERS CHANGED FROM 4 TO 6 AND DIRECTIONS	8-23-54	2	13	G.T.O.	HH
A	1	COMPLETELY REVISED	2/1/54	1	JADE	G.T.O.	HH

NOTICE TO PERSONS RECEIVING THIS DRAWING

THE TECHNICAL MATERIEL CORPORATION claims
 proprietary right in the material disclosed herein.
 This drawing is issued in confidence for engineering
 information only and may not be reproduced or used
 to manufacture anything shown hereon without per-
 mission from THE TECHNICAL MATERIEL CORPORA-
 TION to the user. This drawing is loaned for mutual
 assistance and is subject to recall at any time.

Property of:
 THE TECHNICAL MATERIEL CORPORATION
 MAMARONECK, NEW YORK

REQ.	ITEM	PART NO.	DESCRIPTION	SYMBOL
THE TECHNICAL MATERIEL CORP.				
MAMARONECK, NEW YORK				
CAPACITOR, VARIABLE				
AIR TUNING				
STOCK SIZE				
MATERIAL		G.T.O.		
WEIGHT PER PC.		ELEC. DES. APP. MECH. DES. APP.		
TYPE & TEMPER		G.T.O.		
HEAT TREAT. SPEC.		G.T.O.		
FINISH & SPEC. NO.		G.T.O.		

1	GPR	297	B-3-54
MODEL	PROJECT NO.	ASS'Y. NO.	DATE
USED ON			