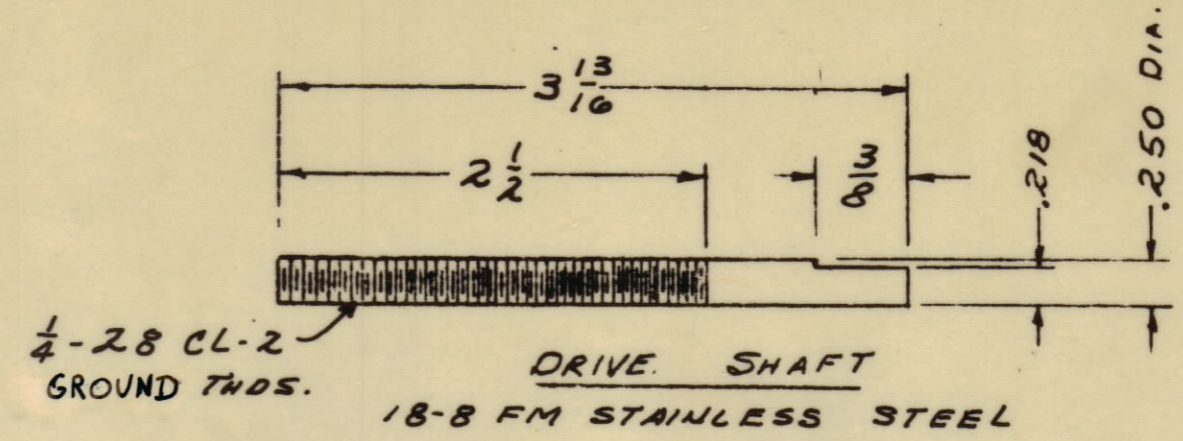
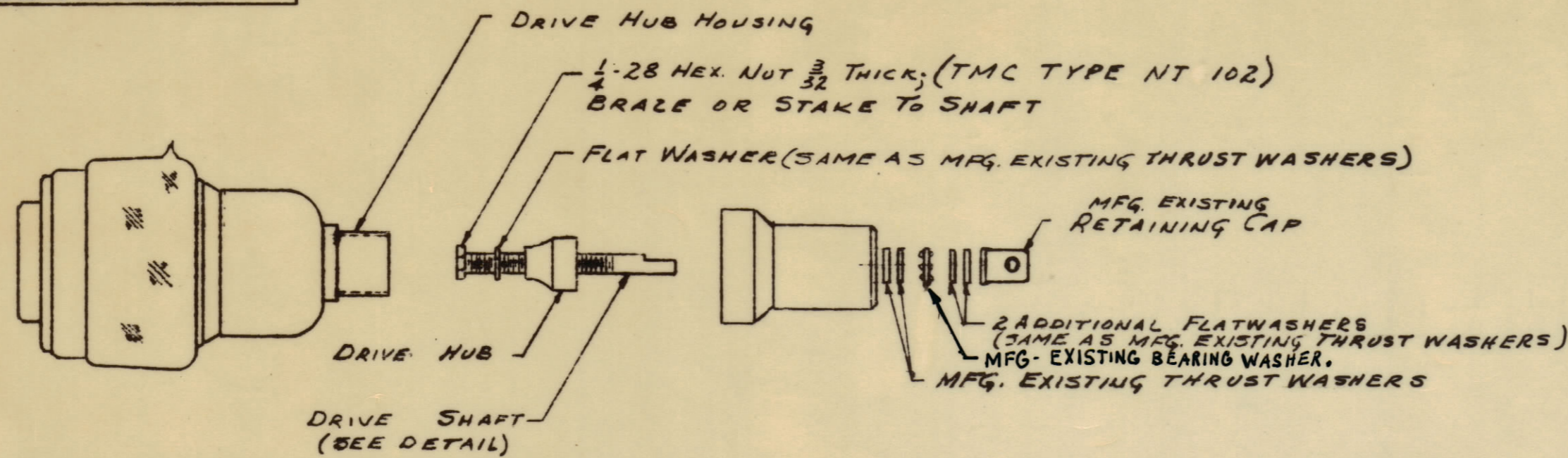
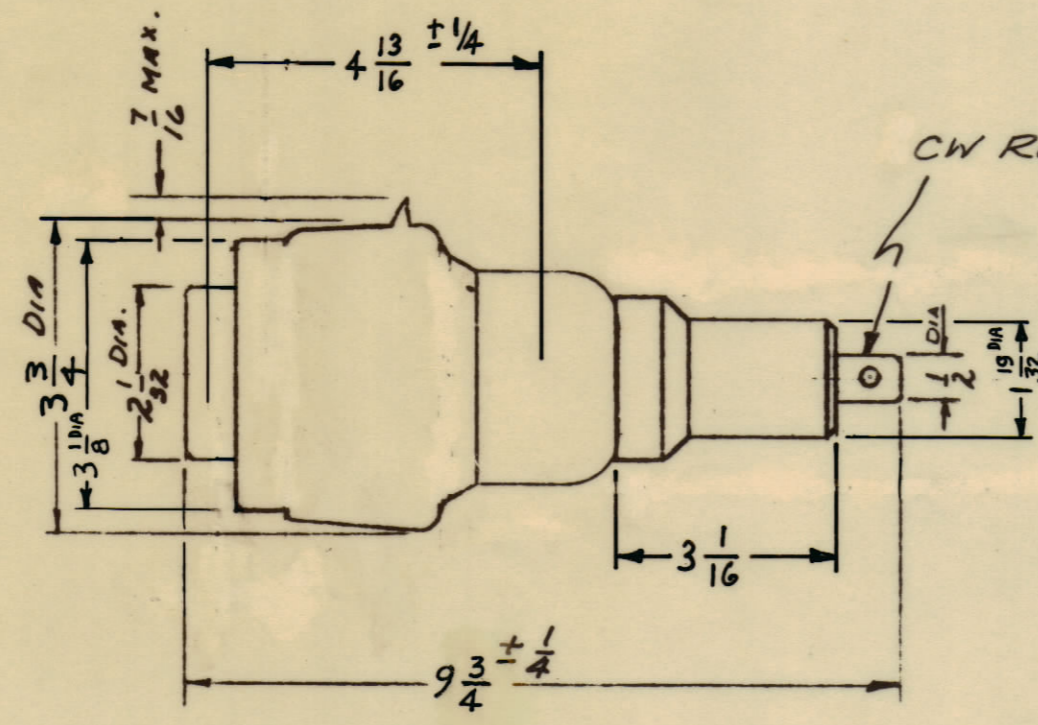


IF IT IS FOUND DESIRABLE TO CHANGE ANY TOLERANCE OR OTHER DETAIL SPECIFIED ON THIS DRAWING NOTIFY THE PURCHASER PROMPTLY.

MAXIMUM ALLOWABLE TOLERANCES HAVE BEEN DETERMINED AND DEVIATIONS WILL BE CAUSE FOR REJECTION. REMOVE ALL BURRS AND SHARP EDGES.



CAPACITANCE - 25-700 μ fd
 VOLTAGE - 15 KV (PEAK) AT 60 cps
 (SEE CURVES ON TMC CB 152)



FINISHED ASSEMBLED ITEM

NOTE:
 1.-ALL OTHER SHAFT DIMS., ETC. MUST BE ADHERED TO BY CAPACITOR MFG.
 2.-FOR MATERIALS AND FINISHES SEE TMC CB 152

CB 154 D

MOUNTING FLANGE REF. FOR TMC USE ONLY
 Fixed End Flange - PO 185-3
 Variable End Flange - PO 185-7

TMC Purchasing Note - Do Not order these Mounting Flanges with this Capacitor, as they may not be required.

REF: TMC CB 152 - 700-15A } MODIFIER AS SHOWN
 UCSX - 25-700-15KV }

NOTICE TO PERSONS RECEIVING THIS DRAWING

THE TECHNICAL MATERIEL CORPORATION claims proprietary right in the material disclosed hereon. This drawing is issued in confidence for engineering information only and may not be reproduced or used to manufacture anything shown hereon without permission from THE TECHNICAL MATERIEL CORPORATION to the user. This drawing is loaned for mutual assistance and is subject to recall at any time.

Property of:
 THE TECHNICAL MATERIEL CORPORATION
 MAMARONECK, NEW YORK

D	3	ON FINISHED ITEM DIMS. UPDATED ON SPECS: "SEE CURVES..." ADD CURRENT RATING DELE. NOTE 2 ADD	10-24-64	12780	lwb	gdl	gdl	gdl
C	1	ON TOL. CHART FRAC. DIM 1/32 WAS 1/64	11-4-61	5815	GDL	gdl	gdl	gdl
B	1	DIM. 9 3/4 ± 1/4 WAS 9 5/8 ± 1/4	8-5-61	5378	G.D.L.	gdl	gdl	gdl
A	4	ADDED NOTE for bearing washers						
	3	DIMS 4 13/16 ± 1/4 & 3 1/8 ADDED						
	2	SHAFT ROTATION WAS CCW						
	1	ON DRIVE SHAFT 1/2-28 THRS WAS FINISHED	5-9-61	4870	WAF	gdl	gdl	gdl

ISSUE	ITEM	CHANGED FROM	DATE	CH. NO.	DRAFTS	CHECKER	ENG. APP.
TOLERANCES		SCALE:					
ALL	DEC. DIM. ±	DRILL, PUNCH, COMMERCIAL STOCK					
OTHERS	FRAC. DIM. ± 1/32	SIZES AND MANUFACTURERS					
	ANGULAR DIM. ±	TOLERANCES ARE NOT INCLUDED.					

1	GPT-10K (ZMC)	AM-113	A-1946	8-23-60
REQ. PER UNIT	MODEL	PROJECT NO.	ASSY. NO.	DATE
USED ON				

REQ. ITEM	PART NO.	DESCRIPTION	SYMBOL
THE TECHNICAL MATERIEL CORP. MAMARONECK, NEW YORK			
STOCK SIZE			
CAPACITOR, VAR., VACUUM			
MATERIAL WEIGHT PER PC. (W/LOCKING SHAFT)			
TYPE & TEMPER			
DRAWN		ELEC. DES. APP.	MECH. DES. APP.
HEAT TREAT. SPEC.		CHECKED	FINAL APPROVAL
			CB 154 D
FINISH & SPEC. NO.			