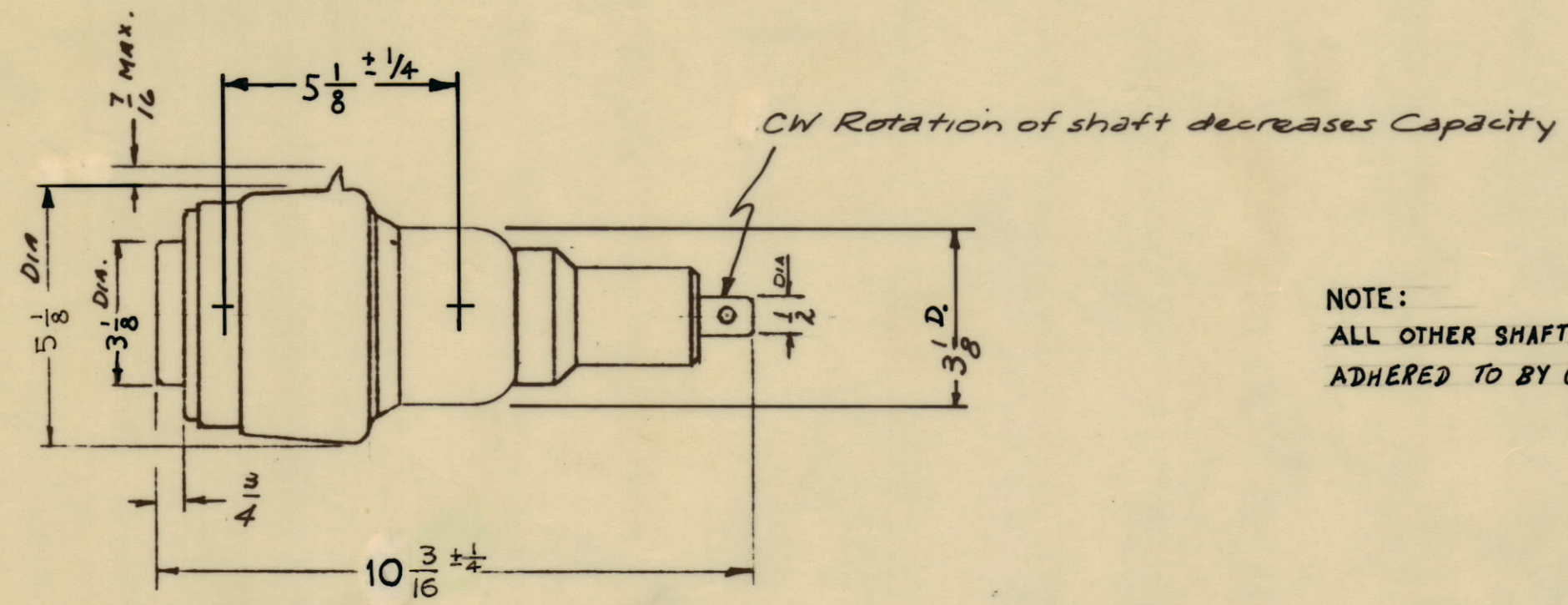
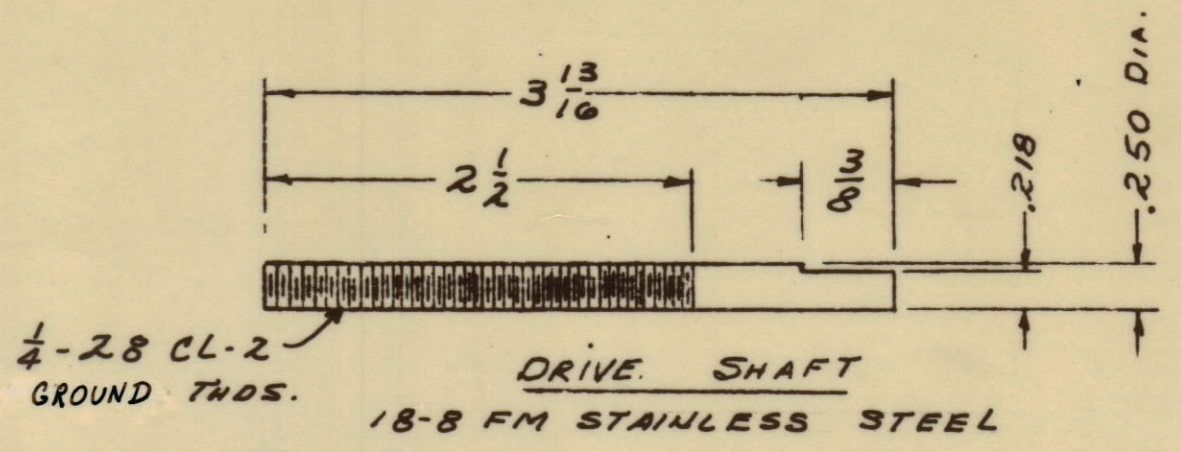
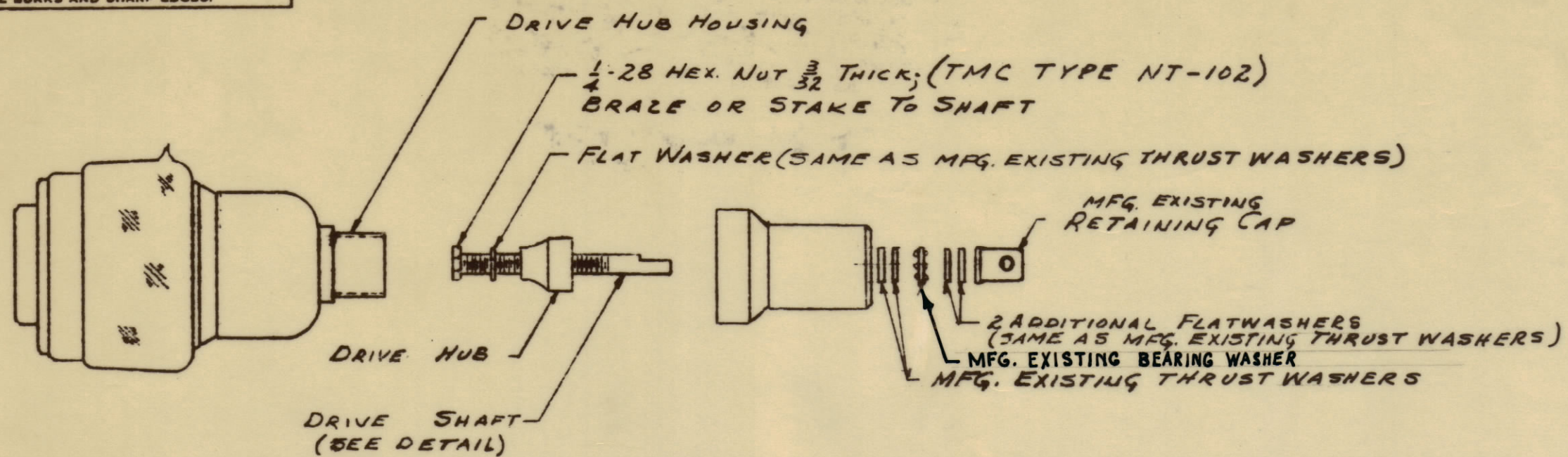


IF IT IS FOUND DESIRABLE TO CHANGE ANY TOLERANCE OR OTHER DETAIL SPECIFIED ON THIS DRAWING NOTIFY THE PURCHASER PROMPTLY.

MAXIMUM ALLOWABLE TOLERANCES HAVE BEEN DETERMINED AND DEVIATIONS WILL BE CAUSE FOR REJECTION. REMOVE ALL BURRS AND SHARP EDGES.



FINISHED ASSEMBLED ITEM

CAPACITANCE - 50-2000 μ ufd
 VOLTAGE - 10 KV (PEAK)
 CURRENT RATING - 45 AMPS RMS

NOTE:
 ALL OTHER SHAFT DIMS., ETC., MUST BE ADHERED TO BY CAPACITOR MFG.

CB-155 B

MOUNTING FLANGE REF. FOR TMC USE ONLY
 Fixed End Flange - PO-185-6
 Variable End Flange - PO-185-7

TMC Purchasing Note - Do Not order these Mounting Flanges with this Capacitor, as they may not be required.

REF: TMC CB-153-2000-10A } MODIFIER AS SHOWN
 UCSXF-50-2000-10KV }

B	1	DIM. 10 3/16 ± 1/4 WAS 10 ± 1/4	8-5-61	5378	6DL	RU	QES
A	4	NOTE ADDED FOR EXISTING BEARING WASHER					
	3	ON DRIVE SHAFT 1/4-20 THDS WERE POLISHED					
	2	SHAFT ROTATION WAS CCW					
	1	5/8 ± 1/4 DIM ADDED					

ISSUE	ITEM	CHANGED FROM	DATE	CH. NO.	DRAFTS	CHECKER	ENG. APP.
TOLERANCES		SCALE: NTS					
ALL OTHERS	DEC. DIM. ±	FRAC. DIM. ±	ANGULAR DIM. ±	DRILL, PUNCH, COMMERCIAL STOCK SIZES AND MANUFACTURERS TOLERANCES ARE NOT INCLUDED.			

NOTICE TO PERSONS RECEIVING THIS DRAWING

THE TECHNICAL MATERIEL CORPORATION claims proprietary right in the material disclosed hereon. This drawing is issued in confidence for engineering information only and may not be reproduced or used to manufacture anything shown hereon without permission from THE TECHNICAL MATERIEL CORPORATION to the user. This drawing is loaned for mutual assistance and is subject to recall any time.

Property of:
 THE TECHNICAL MATERIEL CORPORATION
 MAMARONECK, NEW YORK

1	GPT-40K () 3, AT-103	AM-116	A-2197	10-23-61
1	GPT-10K (ZMC)	AM-114	A-1947	8-23-60
REQ. PER UNIT	MODEL	PROJECT NO.	ASSY. NO.	DATE
USED ON				

REQ. ITEM	PART NO.	DESCRIPTION	SYMBOL
		THE TECHNICAL MATERIEL CORP. MAMARONECK, NEW YORK	
STOCK SIZE		CAPACITOR, VAR., VACUUM	
MATERIAL		(W/LOCKING SHAFT)	
TYPE & TEMPER		CU	
HEAT TREAT. SPEC.		CHECKED	FINAL APPROVAL
FINISH & SPEC. NO.		CB-155	B