

NOTICE TO PERSONS RECEIVING THIS DRAWING

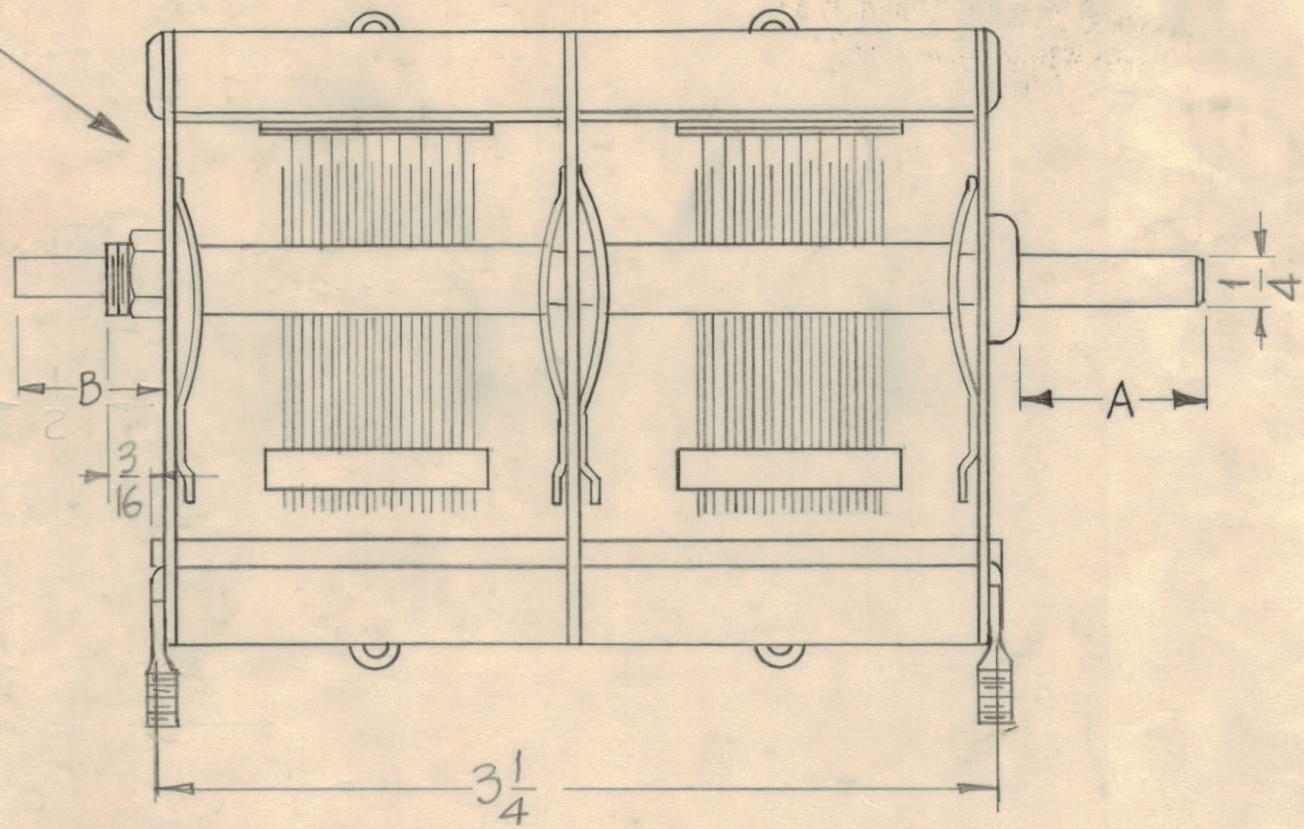
THE TECHNICAL MATERIEL CORPORATION claims proprietary right in the material disclosed herein. This drawing is issued in confidence for engineering information only and may not be reproduced or used to manufacture anything shown hereon without permission from THE TECHNICAL MATERIEL CORPORATION to the user. This drawing is loaned for mutual assistance and is subject to recall at any time.

Property of:
THE TECHNICAL MATERIEL CORPORATION
MAMARONECK, NEW YORK

CB-156 D

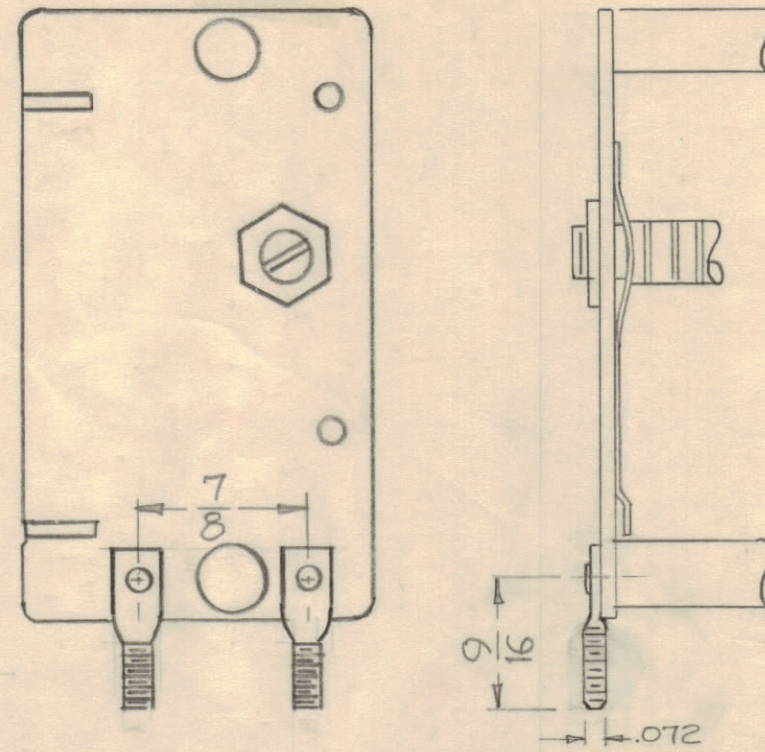
% ROTATION	PLATE
0	0
10	4.7
20	14.3
25	19.8
30	26.1
40	41.7
50	63.9
60	95.4
70	136.1
75	158.5
80	181.4
90	226.7
100	270.0
MIN.	12.5

VIEW A-A



Lugs must be equivalent to TMC Type SC-106-1 (4 REQ.)

VIEW A-A (REAR VIEW)

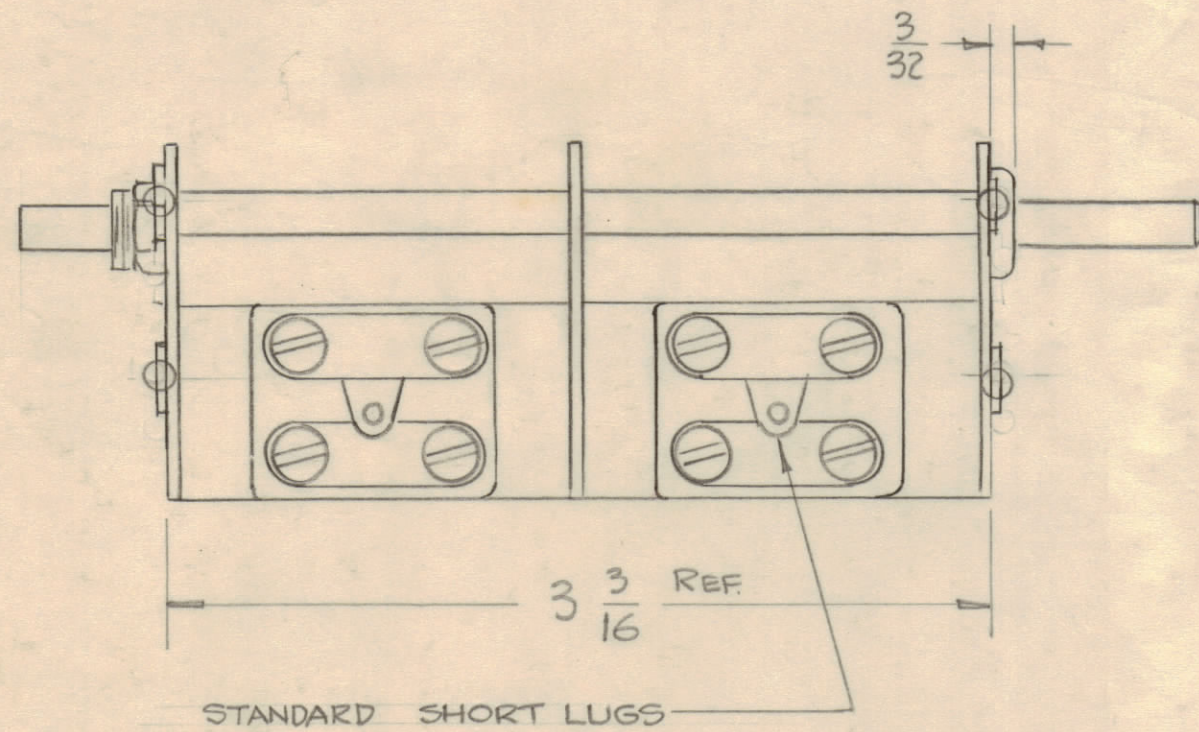


TMC NO.	A	B	REQ
CB-156-1	7/32	7/16	1
CB-156-2	2"	7/16	1
CB-156-3	2 19/32	7/16	1

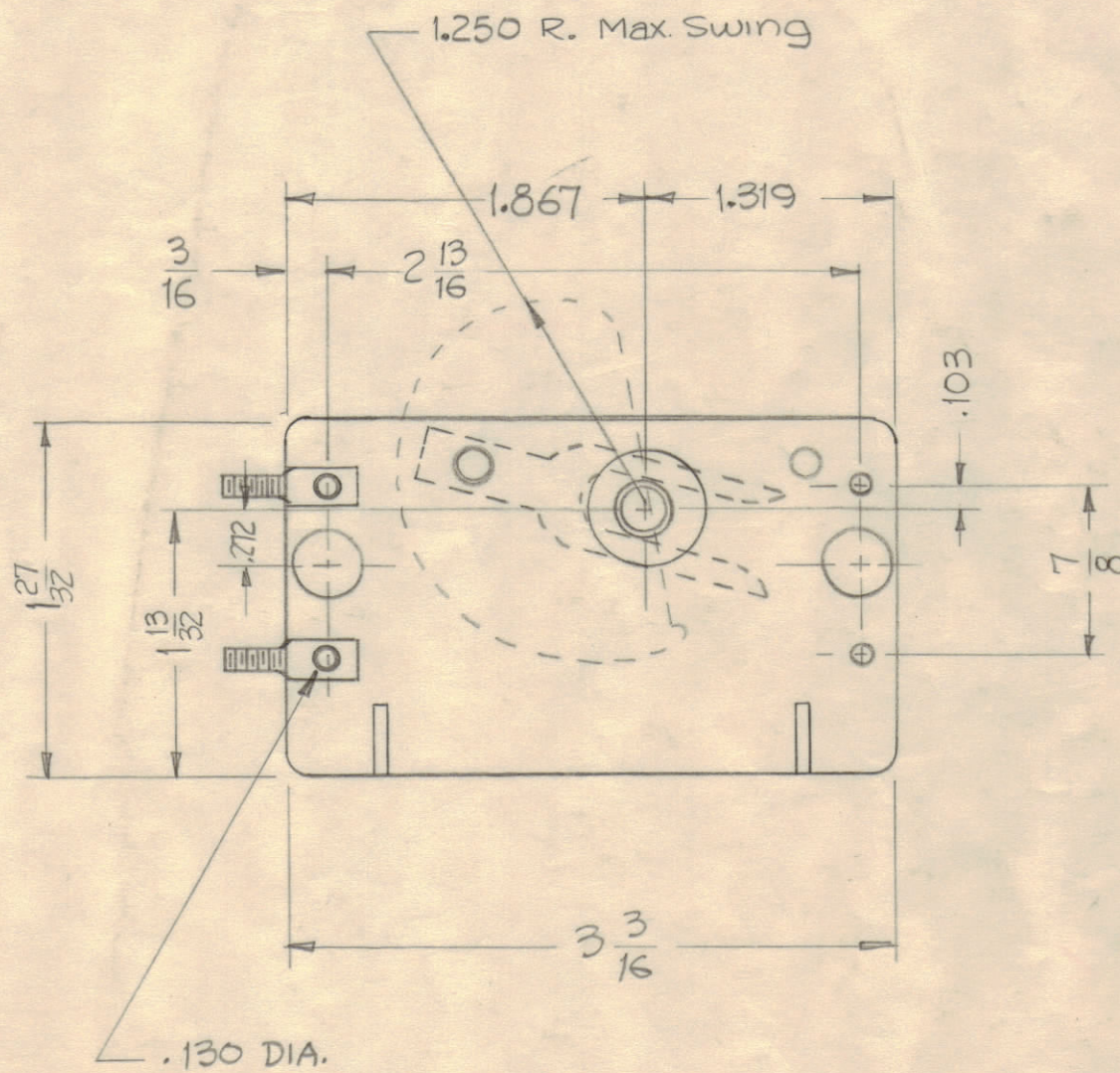
SERIES 17 TYPE K
2 SECTIONS
COUNTERCLOCKWISE ROTATION FOR MAX. CAP
CERAMIC STATOR INSULATION

SECTIONS 1&2
STEEL ROTOR PLATES-11
STEEL STATOR PLATES-10
AIR GAP -.0235
MAX. CAP. APPROX 282
TEST POINTS -25-50-75-100%
CAP. TOL : ACCORDING TO RADIO COND. CORP.
SPECIFICATIONS
ROTOR SHAFT-COLD ROLLED STEEL
WIPERS-SPRING BRASS-POS. AS SHOWN
AND SOLDER TO PLATES.
FINISH-ALL PARTS-CADMIUM PLATE

REF: RADIO CONDENSER CORP



STANDARD SHORT LUGS



STANDARD LOW END PLATES

ISSUE	ZONE	DESCRIPTION	DATE	CH. NO.	DRAFTS	CHECKER	ENG. APP.
D	E2	CB-156-3 WAS 19/32	2/25/64	10942	AM	cat	FK
C	-	CB-156-3 ADDED TO CHART TITLE WAS CONDENSER, VARIABLE AIR	1/13/64	10735	SM	Yla	WLB
B	F1,2	ON CHART "A" 7/32 DIM WAS 7/16, "B" 7/16 DIM WAS 1/2 FOR CB-156-1,-2	11/29/60	3611	DMR	JCS	WLB
A	E2	CB-156-2 ADDED					
A	F2	LUG CORRECTED					
A	F5	"A" DIM. RELOCATED	11-4-60	3382	WFS	WLB	WLB

SCALE: S-401-S1

TOLERANCES
DEC. DIM. ± .005
FRAC. DIM. ± 1/64
ANGULAR DIM. ± 1/2°

MAXIMUM ALLOWABLE TOLERANCES HAVE BEEN DETERMINED AND ANY DEVIATIONS WILL BE CAUSE FOR REJECTION.
REMOVE ALL BURRS AND SHARP EDGES

REQ PER UNIT	MODEL	SECTION	ASS'Y. NO.	DATE
	CHG-1	MF/RF		9-6-60

REQ. ITEM	PART NO.	DESCRIPTION	SYMBOL
THE TECHNICAL MATERIEL CORP. MAMARONECK, NEW YORK			
CAPACITOR, VARIABLE AIR			
MATERIAL			
TYPE & TEMPER			
HEAT TREAT. SPE			
FINISH & SPEC.			

FINAL APPROVAL
A.K.F. WLB
CB-156 D