

IF IT IS FOUND DESIRABLE TO CHANGE ANY TOLERANCE OR OTHER DETAIL SPECIFIED ON THIS DRAWING NOTIFY THE PURCHASER PROMPTLY.

MAXIMUM ALLOWABLE TOLERANCES HAVE BEEN DETERMINED AND DEVIATIONS WILL BE CAUSE FOR REJECTION. REMOVE ALL BURRS AND SHARP EDGES

% ROTATION	21 PLATE
0	0
10	4.7
20	14.3
25	19.8
30	26.1
40	41.7
50	63.9
60	95.4
70	136.1
75	158.5
80	181.4
90	226.7
100	270.0
MIN	12.5

THE TECHNICAL MATERIEL CORPORATION claims no patent rights in the design of a closed circuit capacitor. This design is the property of the corporation and is not to be reproduced or used in any form without the written permission of the TECHNICAL MATERIEL CORPORATION. The use of this design is loaned for mutual assistance and is subject to recall at any time.

Property of:
THE TECHNICAL MATERIEL CORPORATION
MAMARONECK, NEW YORK

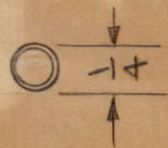
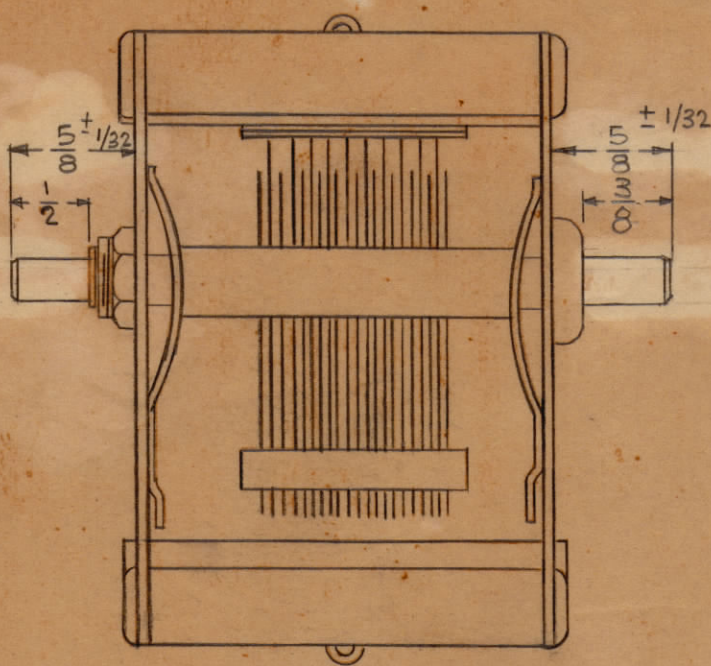
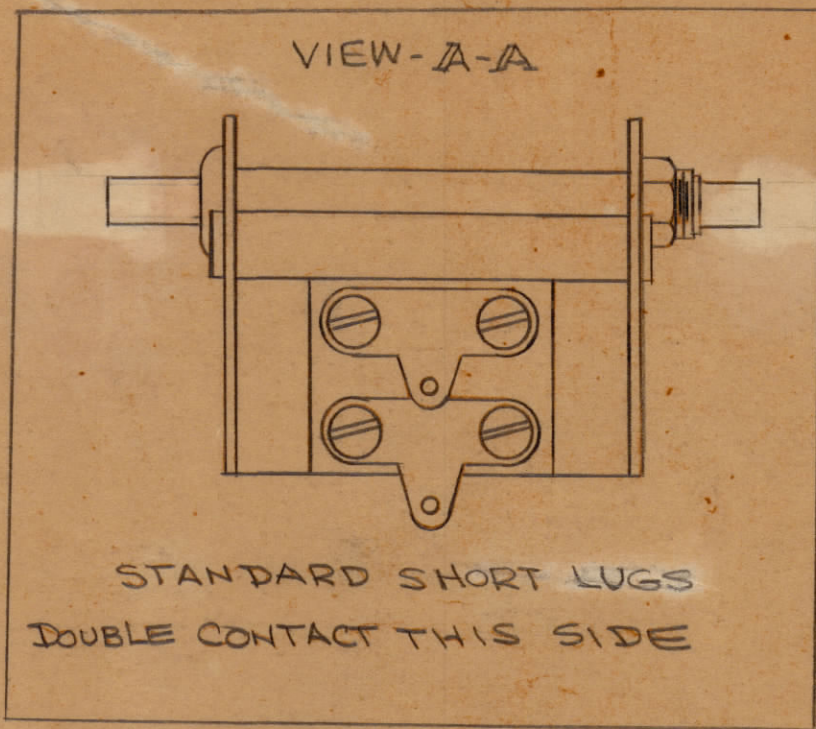
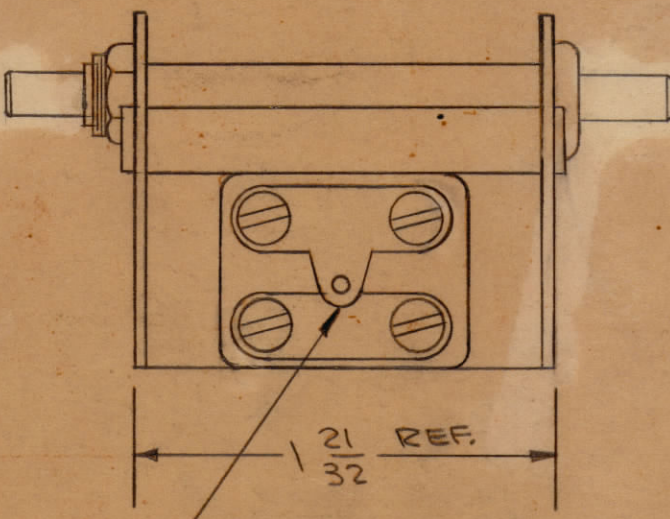


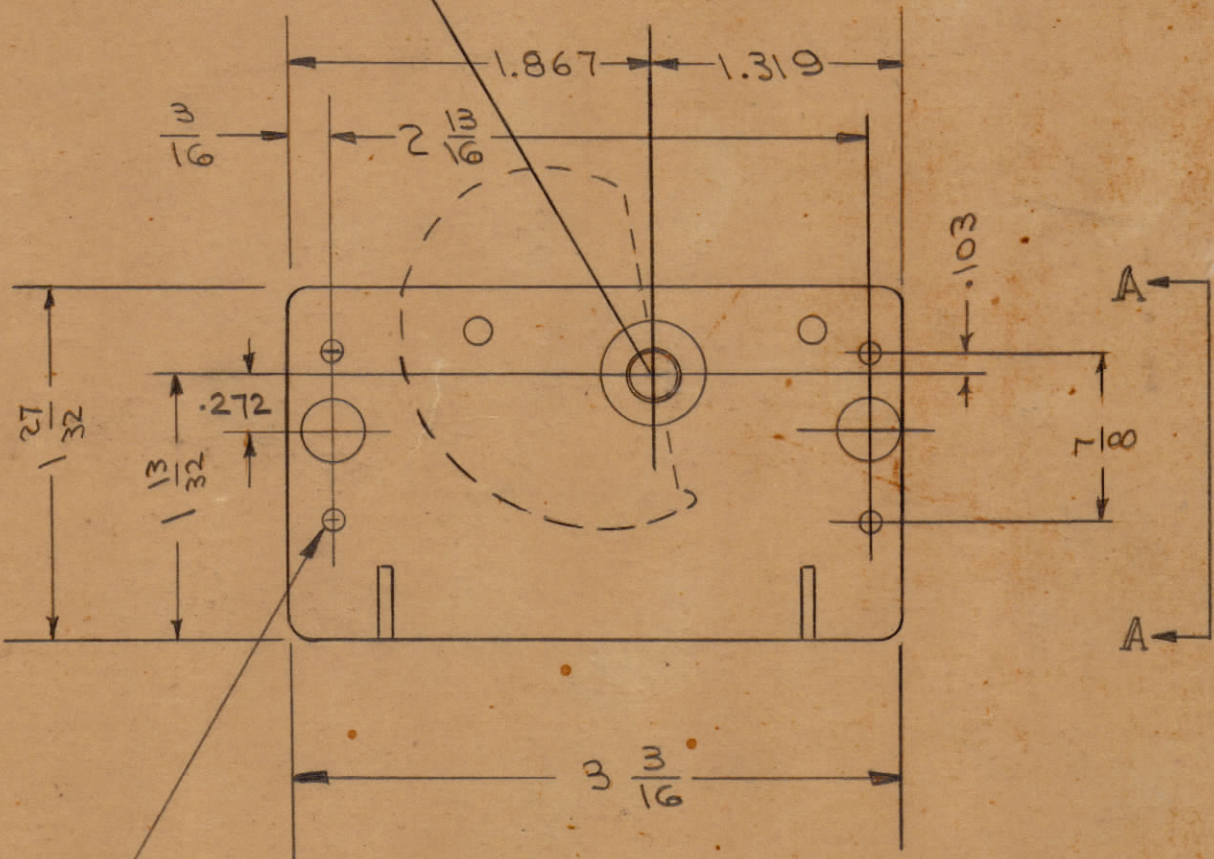
PLATE ON SHAFT MUST BE IN POSITION WHEN CAP IS FULLY CLOSED



1.250 R. MAX. SWING



STANDARD SHORT LUGS
SINGLE CONTACT THIS SIDE



STANDARD LOW END PLATES

CB171 Ø

SERIES 17 - TYPE K
1 SECTION
COUNTERCLOCKWISE ROTATION FOR MAX. CAP
CERAMIC STATOR INSULATION

SECTION
STEEL ROTOR PLATES - 11
STEEL STATOR PLATES - 10
AIR GAP - .0235
MAX. CAP. - APPROX. 282
CAP. TOL.: ACCORDING TO RADIO COND. CORP. SPECIFICATIONS.

ROTOR SHAFT - COLD ROLLED STEEL
5/8" LONG X 1/4" DIA.
5/8" " X 1/4" "
WIPERS - SPRING BRASS - POS. AS SHOWN, AND SOLDER TO END PLATES
FINISH - ALL PARTS - CADMIUM PLATE

Ø	ORIGINAL RELEASE FOR PRODUCTION	4/20/66	CV	JHE	
X1	3/8 WAS 1/2 SHAFT WAS 3/16 FLAT	9-24-65	X1	HG RB	
ISSUE ITEM	CHANGED FROM	DATE	CN. NO. DRAFTS	CHECKER	ENG. APP.
TOLERANCES		SCALE: S401-51			
ALL OTHERS	DEC. DIM. ± FRAC. DIM. ± ANGULAR DIM. ±	DRILL, PUNCH, COMMERCIAL STOCK SIZES AND MANUFACTURERS TOLERANCES ARE NOT INCLUDED.			

1	RFTA-1			3-25-65
REQ. PER UNIT	MODEL	PROJECT NO.	ASSY. NO.	DATE
	USED ON			

REQ. ITEM	PART NO.	BUDETTI	DESCRIPTION	SYMBOL
STOCK SIZE		THE TECHNICAL MATERIEL CORP. MAMARONECK, NEW YORK		
MATERIAL		CONDENSER, VARIABLE AIR		
WEIGHT PER PC.				
TYPE & TEMPER		H AUSTIN		
DRAWN		ELEC. DES. APP. MECH. DES. APP.		
HEAT TREAT. SPEC.		CHECKED FINAL APPROVAL		
FINISH & SPECS. NO.		ML HLG 4/20/66 CB171 Ø		