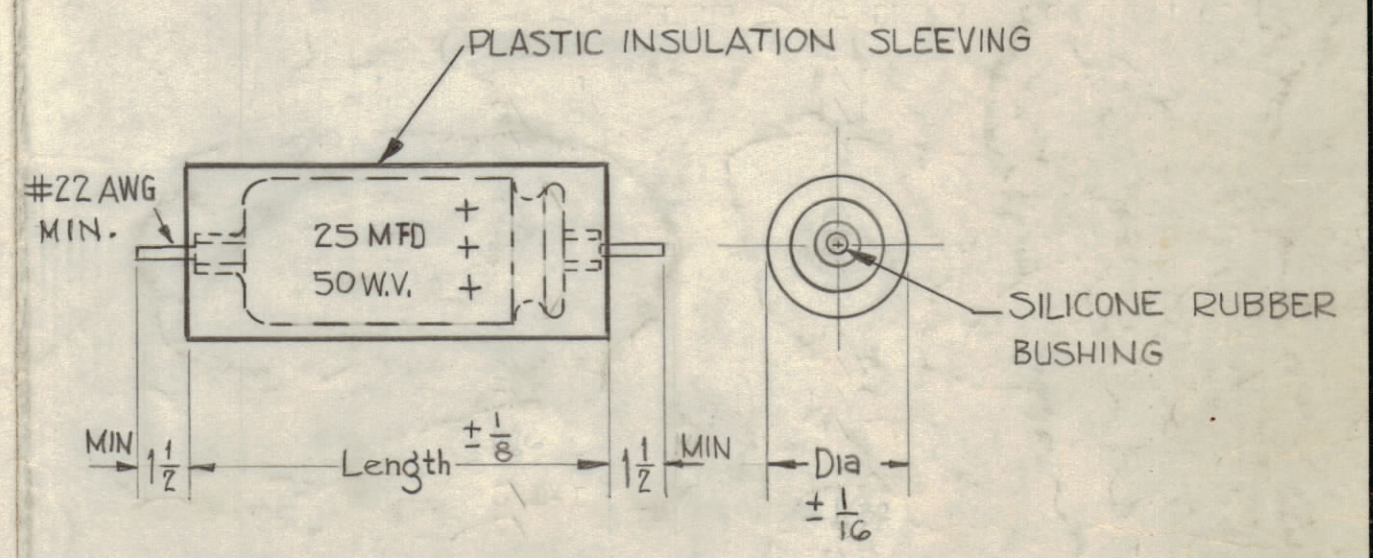


CATALOG NUMBER	MFG. REF.	CAP. IN UF	SIZE IN INCHES		CATALOG NUMBER	MFG. REF.	CAP. IN UF	SIZE IN INCHES	
			DIAMETER MAX.	LENGTH MAX.				DIAMETER MAX.	LENGTH MAX.
3 VOLTS DC WORKING - 4v SURGE					25 VOLTS DC WORKING - 40v SURGE				
NLW1-3	A	1.0	1/4	5/8	NLW1-25	A	1.0	1/4	5/8
NLW2-3	A	2.0	1/4	5/8	NLW2-25	A	2.0	1/4	5/8
NLW3-3	A	3.0	1/4	5/8	NLW3-25	A	3.0	1/4	5/8
NLW4-3	A	4.0	1/4	5/8	NLW4-25	A	4.0	5/16	5/8
NLW5-3	A	5.0	1/4	5/8	NLW5-25	A	5.0	5/16	5/8
NLW6-3	A	6.0	1/4	5/8	NLW6-25	A	6.0	5/16	5/8
NLW8-3	A	8.0	1/4	5/8	NLW8-25	A	8.0	5/16	5/8
NLW10-3	A	10.0	1/4	5/8	NLW10-25	A	10.0	5/16	3/4
NLW15-3	A	15.0	5/16	5/8	NLW15-25	A	15.0	3/8	3/4
NLW20-3	A	20.0	5/16	5/8	NLW20-25	A	20.0	7/16	3/4
NLW25-3	A	25.0	5/16	5/8	NLW25-25	A	25.0	7/16	3/4
NLW30-3	A	30.0	5/16	3/4	NLW30-25	A	30.0	7/16	3/4
NLW35-3	A	35.0	5/16	3/4	NLW35-25	A	35.0	7/16	7/8
NLW40-3	A	40.0	5/16	3/4	NLW40-25	A	40.0	7/16	7/8
NLW50-3	A	50.0	5/16	7/8	NLW50-25	A	50.0	7/16	1
NLW75-3	A	75.0	3/8	7/8	NLW75-25	A	75.0	7/16	1-3/8
NLW100-3	A	100.0	7/16	3/4	NLW100-25	A	100.0	7/16	1-5/8
NLW125-3	A	125.0	7/16	3/4	NLW200-25	A	200.0	1/2	1-1/2
NLW150-3	A	150.0	7/16	7/8					
NLW175-3	A	175.0	7/16	7/8					
NLW200-3	A	200.0	7/16	1					
NLW250-3	A	250.0	7/16	1-1/8					
NLW300-3	A	300.0	7/16	1-1/8					
NLW350-3	A	350.0	7/16	1-1/8					
NLW400-3	A	400.0	7/16	1-3/8					
NLW450-3	A	450.0	7/16	1-5/8					
6 VOLTS DC WORKING - 7.5v SURGE					50 VOLTS DC WORKING - 75v SURGE				
NLW1-6	A	1.0	1/4	5/8	NLW1-50	A	1.0	1/4	5/8
NLW2-6	A	2.0	1/4	5/8	NLW2-50	A	2.0	1/4	5/8
NLW3-6	A	3.0	1/4	5/8	NLW3-50	A	3.0	5/16	5/8
NLW4-6	A	4.0	1/4	5/8	NLW4-50	A	4.0	5/16	5/8
NLW5-6	A	5.0	1/4	5/8	NLW5-50	A	5.0	5/16	5/8
NLW6-6	A	6.0	1/4	5/8	NLW6-50	A	6.0	5/16	3/4
NLW8-6	A	8.0	1/4	5/8	NLW8-50	A	8.0	3/8	5/8
NLW10-6	A	10.0	1/4	5/8	NLW10-50	A	10.0	3/8	3/4
NLW15-6	A	15.0	5/16	5/8	NLW15-50	A	15.0	7/16	3/4
NLW20-6	A	20.0	5/16	5/8	NLW20-50	A	20.0	7/16	3/4
NLW25-6	A	25.0	5/16	3/4	NLW25-50	A	25.0	7/16	7/8
NLW30-6	A	30.0	5/16	3/4	NLW30-50	A	30.0	7/16	7/8
NLW35-6	A	35.0	3/8	3/4	NLW35-50	A	35.0	7/16	1
NLW40-6	A	40.0	3/8	3/4	NLW40-50	A	40.0	7/16	1-1/8
NLW50-6	A	50.0	3/8	7/8	NLW50-50	A	50.0	7/16	1-3/8
NLW75-6	A	75.0	7/16	3/4	NLW75-50	A	75.0	7/16	1-5/8
NLW100-6	A	100.0	7/16	7/8	39D207G050FJ4	B	200.0	23/32	1-13/16
NLW125-6	A	125.0	7/16	7/8					
NLW150-6	A	150.0	7/16	1					
NLW175-6	A	175.0	7/16	1-1/8					
NLW200-6	A	200.0	7/16	1-3/8					
NLW250-6	A	250.0	7/16	1-3/8					
NLW300-6	A	300.0	7/16	1-5/8					
15 VOLTS DC WORKING - 20v SURGE					100 VOLTS DC WORKING - 125v SURGE				
NLW1-15	A	1.0	1/4	5/8	TE-1409	B	20.0	3/8	1-5/8
NLW2-15	A	2.0	1/4	5/8					
NLW3-15	A	3.0	1/4	5/8					
NLW4-15	A	4.0	1/4	5/8					
NLW5-15	A	5.0	1/4	5/8					
NLW6-15	A	6.0	1/4	5/8					
NLW8-15	A	8.0	5/16	5/8					
NLW10-15	A	10.0	5/16	5/8	39D257F150HP4	B	250	15/16	2-3/4
NLW15-15	A	15.0	5/16	3/4	39D107F150FP4	B	100	11/16	2-3/4
NLW20-15	A	20.0	5/16	3/4	39D506F150FJ4	B	50	11/16	1-3/4
NLW25-15	A	25.0	3/8	3/4	39D256F150EJ4	B	25	9/16	1-3/4
NLW30-15	A	30.0	3/8	3/4					
NLW35-15	A	35.0	7/16	3/4					
NLW40-15	A	40.0	7/16	3/4					
NLW50-15	A	50.0	7/16	3/4					
NLW75-15	A	75.0	7/16	7/8					
NLW100-15	A	100.0	7/16	1					
NLW125-15	A	125.0	7/16	1-1/8					
NLW150-15	A	150.0	7/16	1-3/8					
NLW175-15	A	175.0	7/16	1-3/8					
NLW200-15	A	200.0	7/16	1-5/8					

ELECTRICAL SPECIFICATIONS
 TEMPERATURE RANGE -20°C TO +85°C
 CAP. TOL. = -10% +150% AT 120 cps 25°C



NOTE - ALL DIM. IN CHART INCLUDE PLASTIC SLEEVING

CE 105 - 25 - 50

TMC BASIC PARTNUMBER CAP. ufd WORKING VOLTS DC

PROPERTY OF THE TECHNICAL MATERIEL CORPORATION
 THIS DRAWING IS THE PROPERTY OF THE TECHNICAL MATERIEL CORPORATION
 IT IS TO BE KEPT IN CONFIDENCE AND NOT TO BE REPRODUCED OR USED
 IN ANY MANNER WITHOUT THE WRITTEN PERMISSION OF THE TECHNICAL MATERIEL CORPORATION
 PROPERTY OF THE TECHNICAL MATERIEL CORPORATION

SYM	ZONE	DESCRIPTION	DATE	CH. NO.	DRAFTS	CHECKER	ENG. APP.
J		ADDED 150 VOLTS DC WORKING CHART	7-20-67	18413	C.V.	HG	RA
H		CHGD. SIZES OF MFG REF "B"	4-4-67	18027	HCA	OCB	BM
G		ADD 39D207G050FJ4 NEW HEADING & 39D157G075FJ4 . CHG'D 20°C TO -20°C	11/3/66	17140	RME	OCB	BM

UNLESS OTHERWISE SPECIFIED:
 DIMENSIONS ARE IN INCHES
 TOLERANCES ON FRACTIONS ± 1/64 DECIMALS ± .005 ANGLES ± 1/2°
 SCALE: MAXIMUM ALLOWABLE TOLERANCES HAVE BEEN DETERMINED AND ANY DEVIATIONS WILL BE CAUSE FOR REJECTION. REMOVE ALL BURRS & SHARP EDGES

REQ. ITEM	PART NO.	DESCRIPTION	SYMBOL
MFG. REF.	"A" - S-401-146 "B" - S-401-49 (ALL SIZES AVAILABLE)		
THE TECHNICAL MATERIEL CORP. MAMARONECK, NEW YORK			
ALUMINUM CASE MINIATURE ELECTROLYTIC CAPACITOR			
MATERIAL: R UZZO, OCB, BM			
DRAWN: OCB, CHECKED: OCB, FINAL APPROVAL: BM			
TYPE & TEMPER HEAT TREAT. SPEC.			
FINISH & SPEC. NO. ELEC. DES. APP. MECH. DES. APP. SHEET OF CE-105 J			