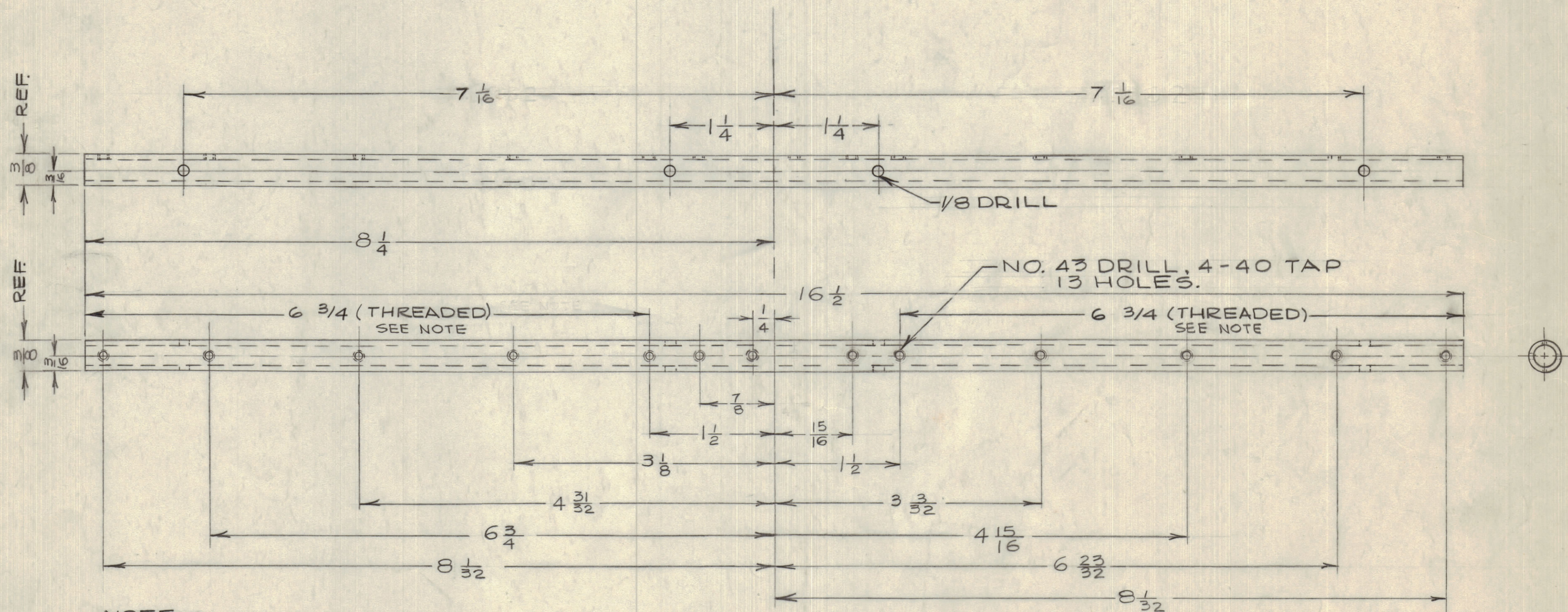


IF IT IS FOUND DESIRABLE TO CHANGE ANY TOLERANCE OR OTHER DETAIL SPECIFIED ON THIS DRAWING NOTIFY THE PURCHASER PROMPTLY.

MAXIMUM ALLOWABLE TOLERANCES HAVE BEEN DETERMINED AND DEVIATIONS WILL BE CAUSE FOR REJECTION. REMOVE ALL BURRS AND SHARP EDGES

CF10007 E



NOTE:  
 1- USE 7/16 X 14T. ADJUSTABLE DIE  
 ADJUST DIE SO THAT 1/32 THREADED DEPTH  
 IS OBTAINED ON SURFACE, OF TUBE - REGARDLESS  
 OF TUBE DIAMETER.  
 2- USE SPAULDITE XXX-15 MATERIAL FOR BEST MACHINING QURLITY.

E	2	NOTE No. (2) ADDED MAT'L WAS SRBP 3X	3-12-63	8450				
D	1	THREADING DETAILS ADDED	DEC 15/60		JPC			
C	1	REDRAWN	DEC 15/60		JPC			
ISSUE	ITEM	CHANGED FROM	DATE	CN. NO.	DRAFTS	CHECKER	ENG. APP.	
TOLERANCES			SCALE: 1:1					
ALL OTHERS			DEC. DIM. ± 1/64 FRAC. DIM. ± ANGULAR DIM. ±					
			DRILL, PUNCH, COMMERCIAL STOCK SIZES AND MANUFACTURERS TOLERANCES ARE NOT INCLUDED.					

AMC6-2-3 ST1073 NOV.12/59  
 MODEL PROJECT No. ASS'Y. No. DATE  
 USED ON

REQ. ITEM	PART No.	DESCRIPTION	SYMBOL
3	OD X 1/4 ID	TMC (Canada) LIMITED OTTAWA ONTARIO	
STOCK SIZE		COIL FORM	
SPAULDITE XXX-15		DELAY LINE	
MATERIAL WEIGHT PER PC.		JPC	
TYPE & TEMPER		DRWN	
HEAT TREAT. SPEC.		CHECKED	
LACQUER		FINAL APPROVAL	
FINISH & SPEC. No.			CF10007E