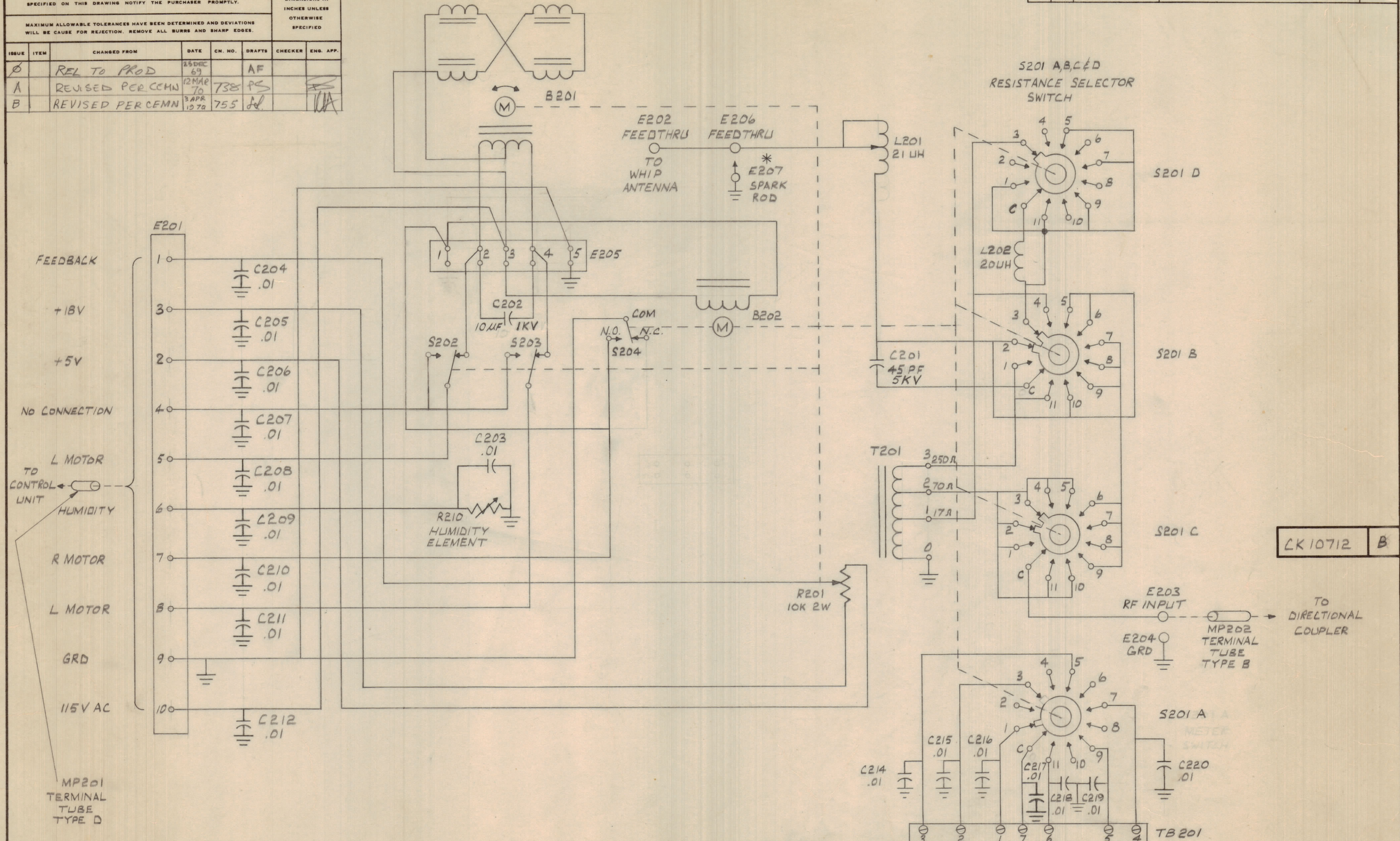


IF IT IS FOUND DESIRABLE TO CHANGE ANY TOLERANCE OR OTHER DETAIL SPECIFIED ON THIS DRAWING NOTIFY THE PURCHASER PROMPTLY.						DIMENSIONS IN INCHES UNLESS OTHERWISE SPECIFIED	
MAXIMUM ALLOWABLE TOLERANCES HAVE BEEN DETERMINED AND DEVIATIONS WILL BE CAUSE FOR REJECTION. REMOVE ALL BURRS AND SHARP EDGES.							
ISSUE	ITEM	CHANGED FROM	DATE	CN. NO.	DRAFTS	CHECKER	ENG. APP.
0		REL TO PROD	25 DEC 69		AF		
A		REVISED PER CCMN	12 MAR 70	738	PS		
B		REVISED PER CCMN	3 APR 1970	755	JA		

REQ.	ITEM	PART NO.	DESCRIPTION	SYMBOL
------	------	----------	-------------	--------



CK 10712 B

LAST COMP. NO.	COMP. NO.S NOT USED
B202	
C220	C213
E207	
L202	R202 THRU
MP202	R209.
R210	
S204	
T201	

NOTES: 1. ALL RESISTORS ARE 1/2 WATT UNLESS OTHERWISE STATED.
2. ALL CAPACITANCE VALUES ARE IN U.F. 200V UNLESS OTHERWISE STATED.

TOLERANCES		SCALE:
ALL OTHERS	DEC. DIM. ± 1/64 FRAC. DIM. ± 1/64 ANGULAR DIM. ± 0° 30'	.X = .05 .XX = .01 .XXX = .005 DRILL, PUNCH, COMMERCIAL STOCK SIZES AND MANUFACTURERS TOLERANCES ARE NOT INCLUDED.

TU-2C	PROJECT NO.	ASSY. NO.	DATE
			23 DEC 69

STOCK SIZE		TMC (Canada) LIMITED OTTAWA ONTARIO	
MATERIAL		SCHEMATIC DIAGRAM TU-2C	
WEIGHT PER PC.		FEARNLEY	
TYPE & TEMPER		DRAWN	ELEC. DES. APP.
HEAT TREAT. SPEC.		CHECKED	MECH. DES. APP.
FINISH & SPEC. NO.		FINAL APPROVAL	
		CK 10712 B	