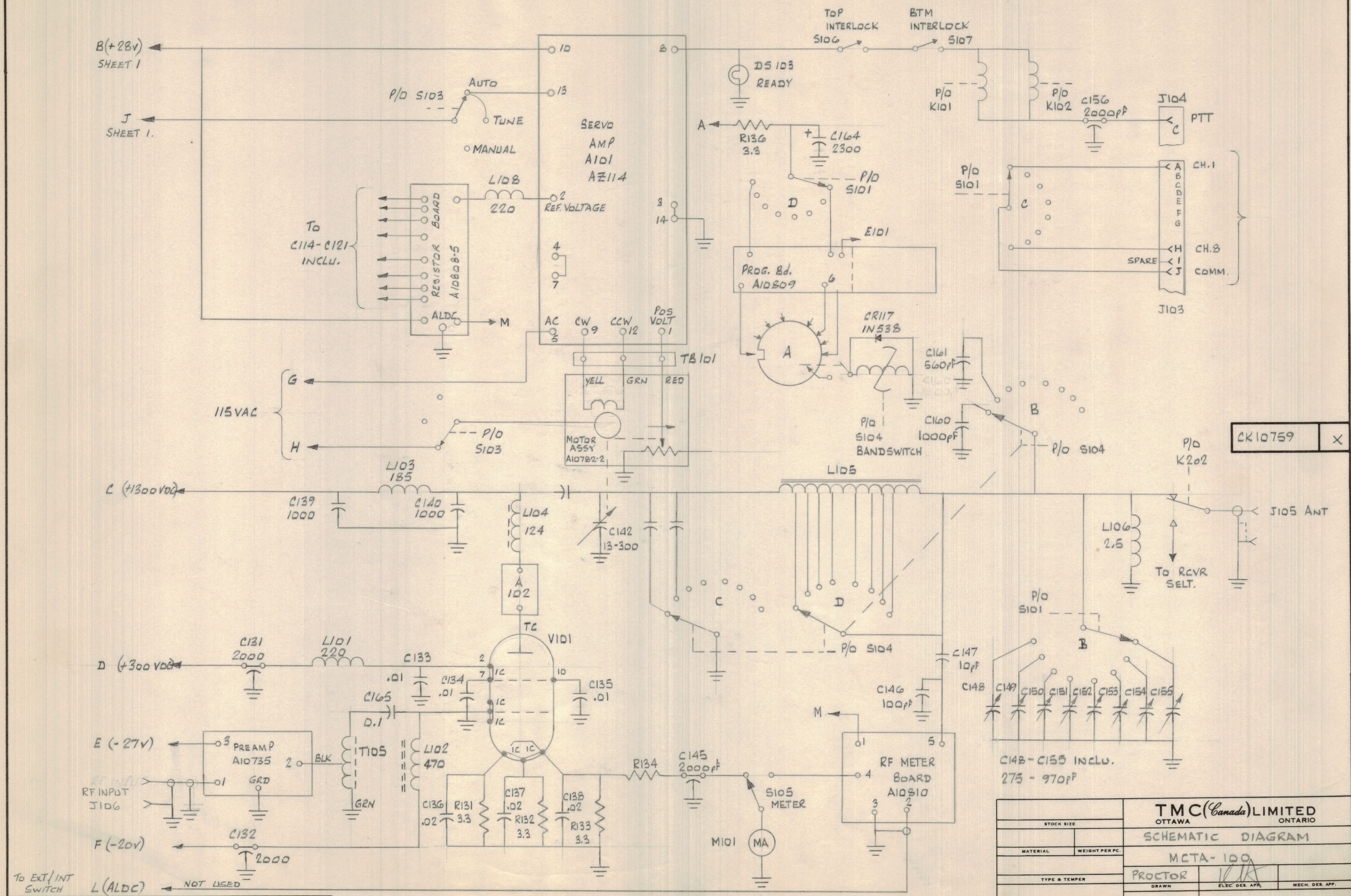


| IF IT IS FOUND DESIRABLE TO CHANGE ANY TOLERANCE OR OTHER DETAIL SPECIFIED ON THIS DRAWING NOTIFY THE PURCHASER PROMPTLY. | | | | | | DIMENSIONS IN INCHES UNLESS OTHERWISE SPECIFIED | |
|---|------|--------------|--------|---------|--------|---|-----------|
| MAXIMUM ALLOWABLE TOLERANCES HAVE BEEN DETERMINED AND DEVIATIONS WILL BE CAUSE FOR REJECTION. REMOVE ALL BURRS AND SHARP EDGES. | | | | | | | |
| ISSUE | ITEM | CHANGED FROM | DATE | CH. NO. | DRAFTS | CHECKER | ENG. APP. |
| X | | ENG RELEASE | 30 JAN | | | | |

| REQ. | ITEM | PART NO. | DESCRIPTION | SYMBOL |
|------|------|----------|-------------|--------|
|------|------|----------|-------------|--------|



CK10759 X

| | | | |
|--------------------|--|--|-----------------|
| STOCK SIZE | | TMC (Canada) LIMITED OTTAWA ONTARIO | |
| MATERIAL | | SCHEMATIC DIAGRAM | |
| TYPE & TEMPER | | MCTA-100 | |
| HEAT TREAT. SPEC. | | PROCTOR | MECH. DES. APP. |
| FINISH & SPEC. NO. | | CHECKED | FINAL APPROVAL |
| | | SHT 2 of 2 | CK10759 X |

| TOLERANCES | | SCALE: |
|------------|---|---|
| ALL OTHERS | DEC. DIM. ± .05 FRAC. DIM. ± 1/64 ANGULAR DIM. ± 0° 30' | DRILL, PUNCH, COMMERCIAL STOCK SIZES AND MANUFACTURERS TOLERANCES ARE NOT INCLUDED. |

| | | |
|----------|-------------|-----------|
| MCTA-100 | 102/70 | 30 JAN 70 |
| MODEL | PROJECT NO. | ASSY. NO. |
| USED ON | | |