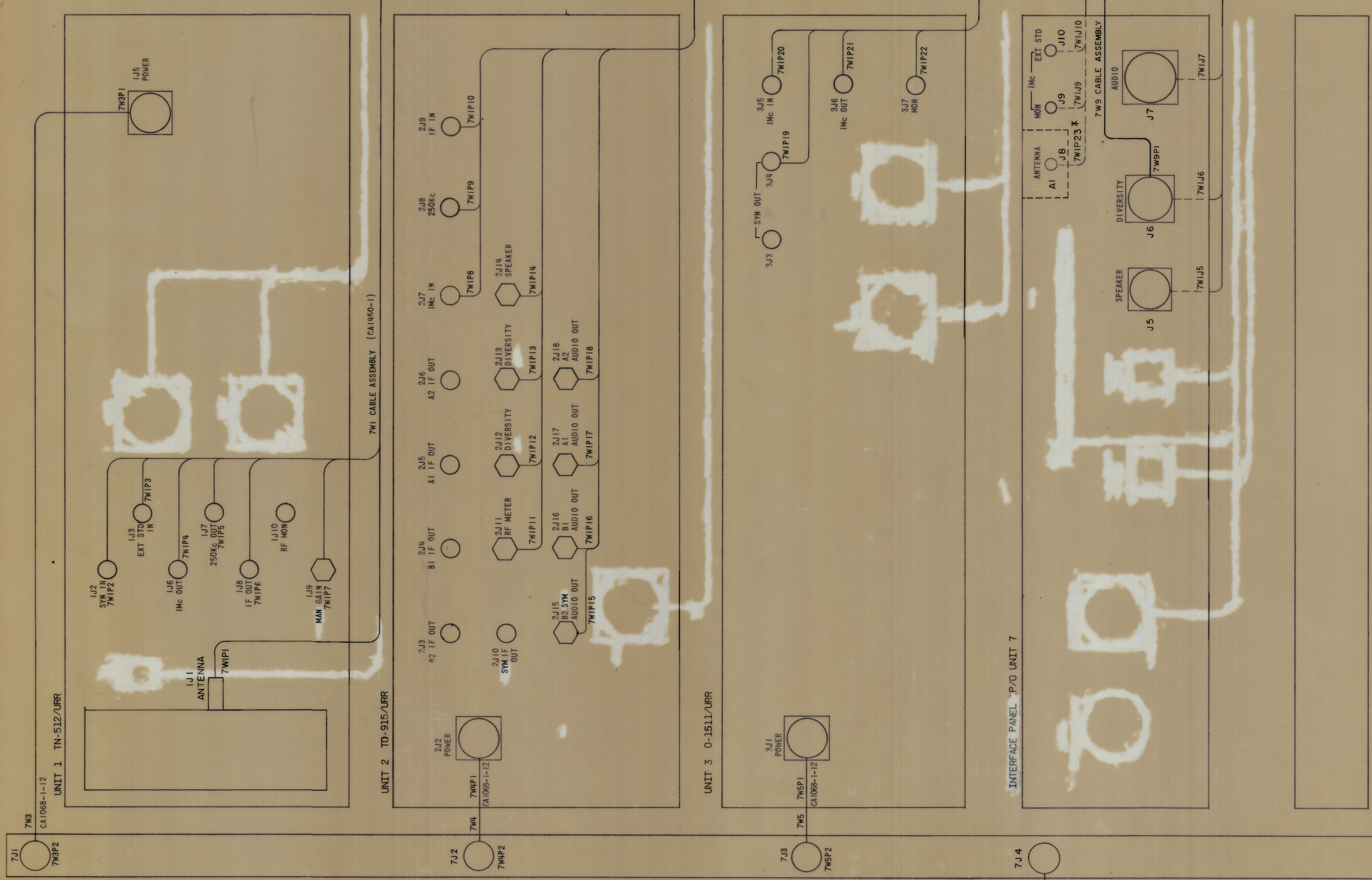


REVISIONS						
ZONE	LTR	DESCRIPTION	DATE	E.M.N.NO	DRAFT	CHKD APPD
	X	EXPERIMENTAL RELEASE	1-13-70		KD	
	8	ORIGINAL RELEASE FOR PRODUCTION	4/13/70		CL	
	9	REVISED	2/29/70	138936	RL	U
	B	REVISED	11/3/70	20103	RZ	U PEN
	C	REVISED	11/26/70	20128	RZ	U PEN



NOTE: DOTTED LINES DENOTE REAR OF PANEL CONNECTION
 * 7WIP23 CONNECTS TO AIJ7.

RAK 127-2C		DDR 10M	
QTY / UNIT	MODEL USED ON	ASS'Y NO.	
APPLICATION			
CODE	0100 016		
NOTICE TO PERSONS RECEIVING THIS DRAWING			
THE TECHNICAL MATERIEL CORPORATION claims proprietary right in the material disclosed herein. This drawing is issued in confidence for engineering information only and may not be reproduced or used to manufacture anything shown herein without permission from THE TECHNICAL MATERIEL CORPORATION to the user. This drawing is loaned for mutual assistance and is subject to recall at any time.			

TOLERANCES ON	
DECIMALS	FRACTIONS
.X ± .05	± 1/64
.XX ± .01	ANGLES
.XXX ± .005	± 0°-30'

QTY. REQ.	ITEM	PART NO.	DESCRIPTION	SYMBOL
LIST OF MATERIAL				
POSE				
FINAL APPROVAL		DATE	7-13-70	
MECH. DES.		DATE		
ELECT. DES.		DATE	11/MAR 70	
CHECKED		DATE		
DRAWN		DATE	11/14/69	
MATERIAL		SIZE CODE IDENT.NO./DWG NO.		ISSUE
FINISH		D 82679 CK 1624		C
SCALE		1/1		SHEET 1 OF 2

THE TECHNICAL MATERIEL CORP.
 MAMARONECK, NEW YORK
DIAGRAM, RACK CBL CONN
AN/URR-64(V)I

CK1624