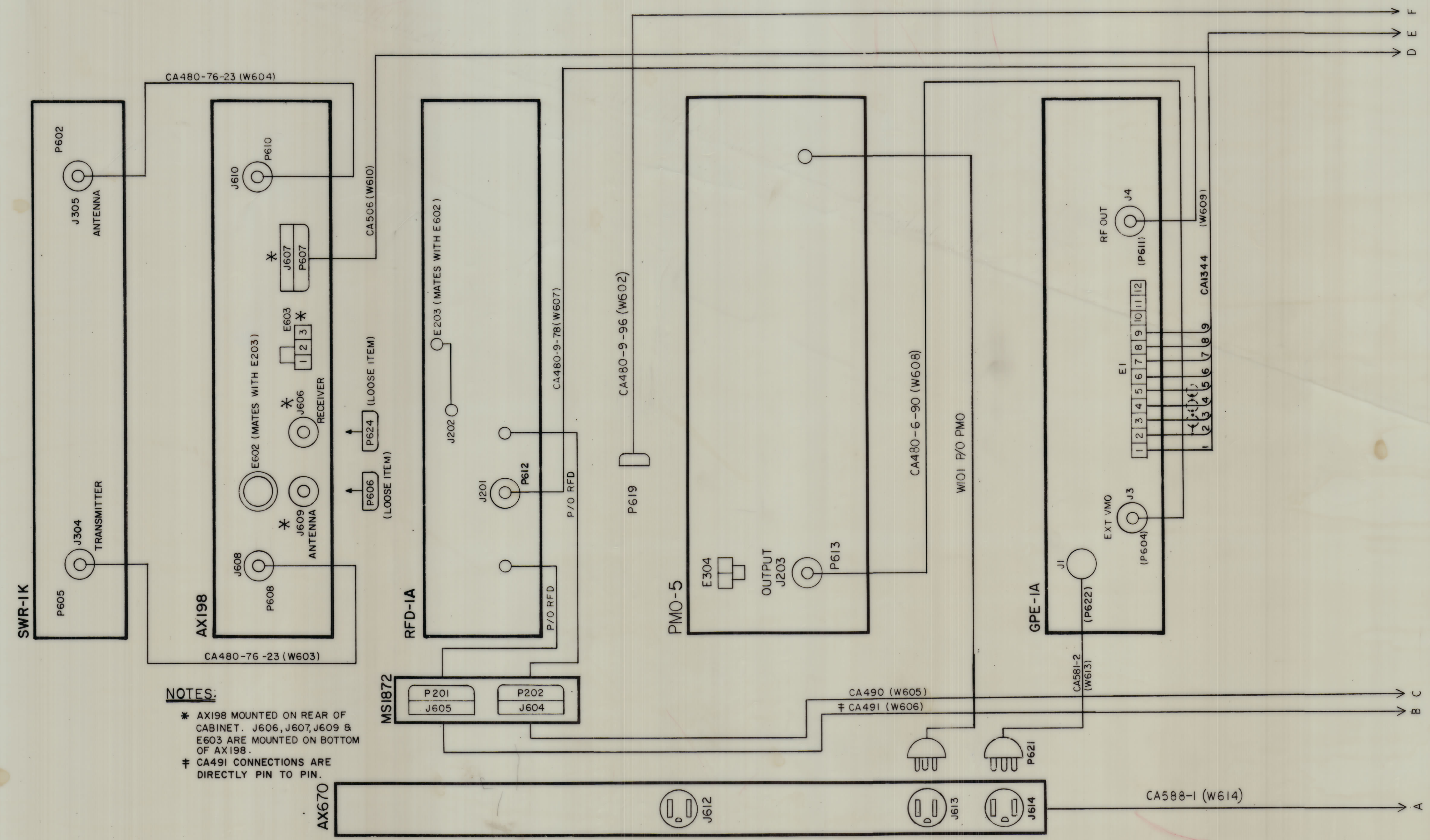


REVISIONS							
E.M.N.O.	DRAFT	CHKD	ZONE	LTR	DESCRIPTION	DATE	APPROVED
KD					ORIGINAL RELEASE FOR PRODUCTION	12-16-69	

W601, W602 TIED BACK IN RACK FOR FUTURE INSTALLATION OF SME EXCITER



NOTES:

- * AX198 MOUNTED ON REAR OF CABINET. J606, J607, J609 & E603 ARE MOUNTED ON BOTTOM OF AX198.
- † CA491 CONNECTIONS ARE DIRECTLY PIN TO PIN.

1	GPT-1KG	RAK 9F4
QTY / UNIT	MODEL USED ON	ASS'Y NO.
APPLICATION		
CODE		
<small>NOTICE TO PERSONS RECEIVING THIS DRAWING</small> <small>THE TECHNICAL MATERIEL CORPORATION claims proprietary right in the material disclosed hereon. This drawing is issued in confidence for engineering information only and may not be reproduced or used to manufacture anything shown hereon without permission from THE TECHNICAL MATERIEL CORPORATION to the user. This drawing is loaned for mutual assistance and is subject to recall at any time.</small>		

QTY. REQ.	ITEM	PART NO.	DESCRIPTION	SYMBOL
BUDETTI LIST OF MATERIAL				
FINAL APPROVAL		DATE	THE TECHNICAL MATERIEL CORP.	
MECH. DES.		DATE	MAMARONECK, NEW YORK	
ELECT. DES.		DATE	DIAGRAM, WIRING	
CHECKED		DATE	GPT-1KG	
DRAWN		DATE	SIZE CODE IDENT NO. DWG NO. ISSUE	
			D 82679 CK 1687	
			SCALE SHEET 2 OF 2	

CK 1687