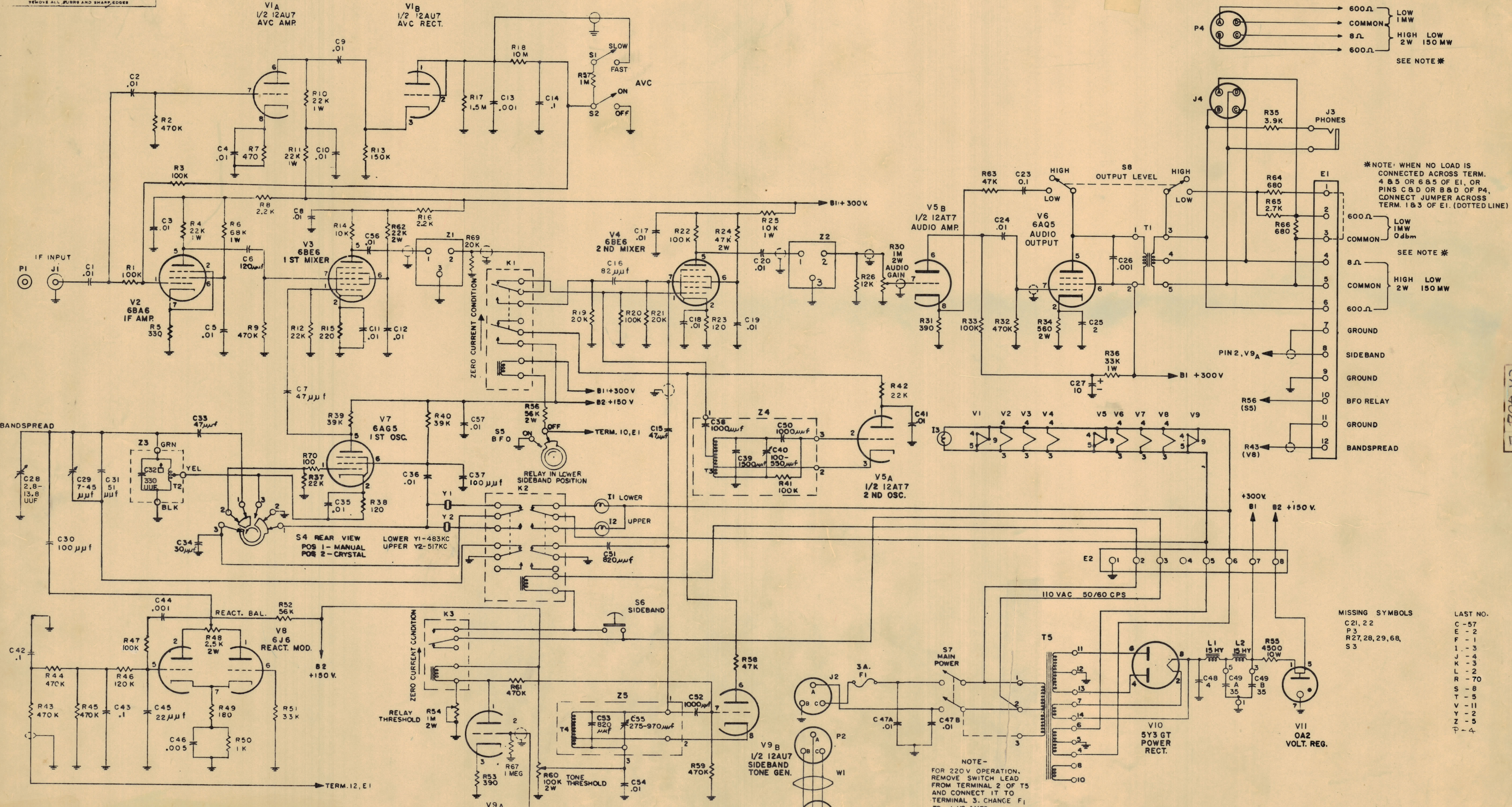


IF IT IS FOUND NECESSARY TO CHANGE ANY TOLERANCE OR OTHER DETAIL SPECIFIED ON THIS DRAWING NOTIFY THE ENGINEER WHO APPLIED THE TOLERANCE. THE MAXIMUM ALLOWABLE TOLERANCES HAVE BEEN DETERMINED AND DEVIATIONS WILL BE CAUSE FOR REJECTION. REMOVE ALL BURRS AND SHARP EDGES.



*NOTE: WHEN NO LOAD IS CONNECTED ACROSS TERM. 4 & 5 OR 6 & 5 OF E1, OR PINS C & D OR B & D OF P4, CONNECT JUMPER ACROSS TERM. 1 & 3 OF E1. (DOTTED LINE)

- MISSING SYMBOLS
- C21, 22
 - P3
 - R27, 28, 29, 68, S3
- LAST NO.
- C - 57
 - E - 2
 - F - 1
 - I - 3
 - J - 4
 - K - 3
 - L - 2
 - R - 70
 - S - 8
 - T - 5
 - V - 11
 - Y - 2
 - Z - 5
 - ∅ - 4

NOTE - FOR 220 V. OPERATION. REMOVE SWITCH LEAD FROM TERMINAL 2 OF T5 AND CONNECT IT TO TERMINAL 3. CHANGE F1 TO 1/2 AMPS

NOTE: UNLESS OTHERWISE NOTED, CAPACITORS ARE IN μ fd UNLESS OTHERWISE NOTED, RESISTORS ARE 1/2 WATT

NOTICE TO PERSONS RECEIVING THIS DRAWING

THE TECHNICAL MATERIEL CORPORATION claims proprietary right in the material disclosed hereon. This drawing is issued in confidence for engineering information only and may not be reproduced or used to manufacture anything shown hereon without permission from THE TECHNICAL MATERIEL CORPORATION to the user. This drawing is loaned for mutual assistance and is subject to recall at any time.

Property of:
THE TECHNICAL MATERIEL CORPORATION
MAMARONECK, NEW YORK

E	ON 3/25 P2: B WAS C, C WAS B	3-19-65	13742	22	
D	R70 ADD. ON LAST NOS R70 WAS R69 C37 WAS 150 μ MF	3-18-64	12384	10B	
C	R47 WAS 82K	6/17/64	11606	A.M.	
B	ON S1 REVERSED LETTERING FIRST 6 ON C28) 2-B-13.8 UUF WAS 2-B-16 UUF	11-25-62	6758	V.R.R.	
A		11-15-62	3476		

REQ. UNIT	ITEM	PART NO.	DESCRIPTION	SYMBOL
			THE TECHNICAL MATERIEL CORP. MAMARONECK, NEW YORK	
			SCHEMATIC DIAGRAM	
			MSR-B	
			10-26-60	

CK-462 E