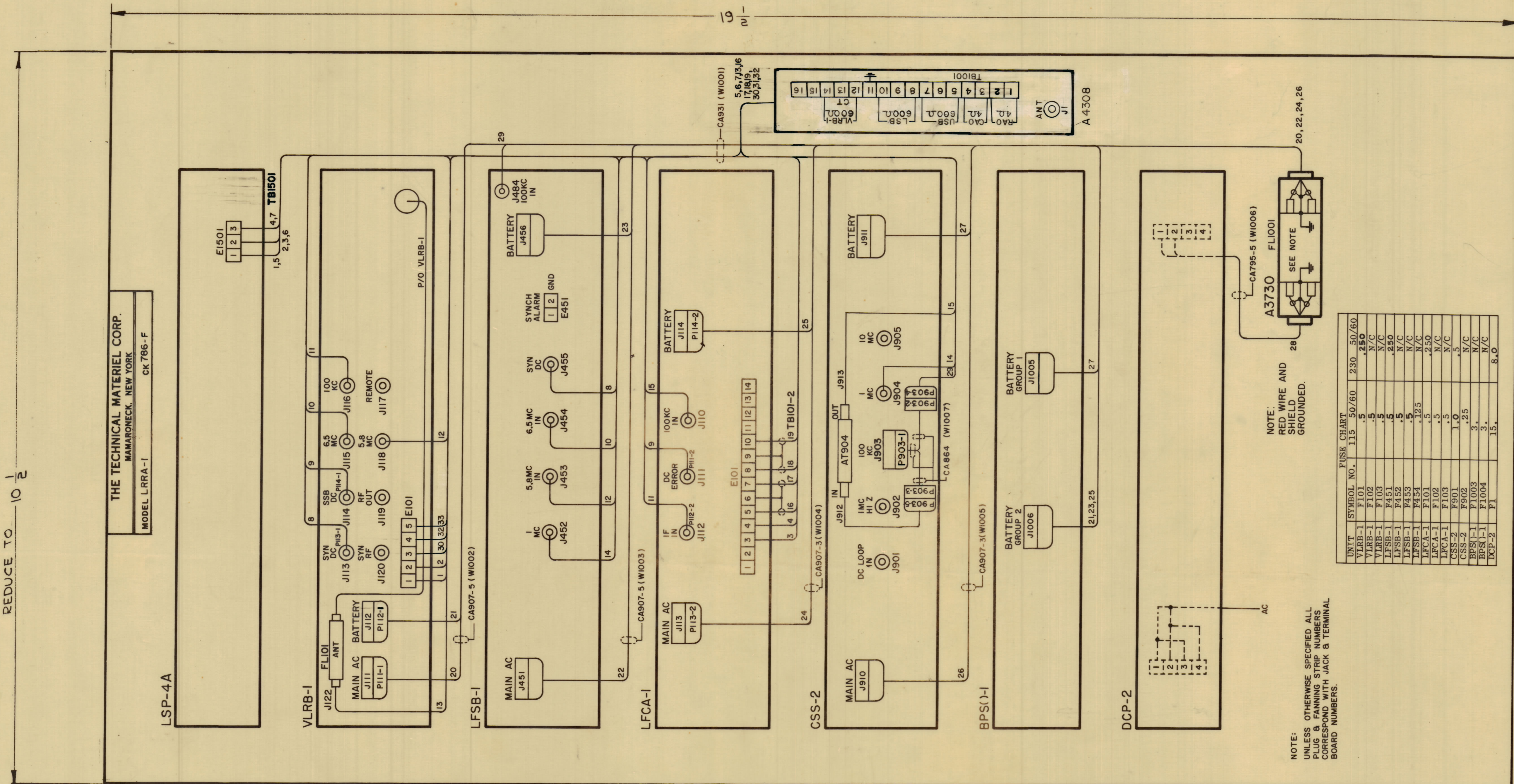


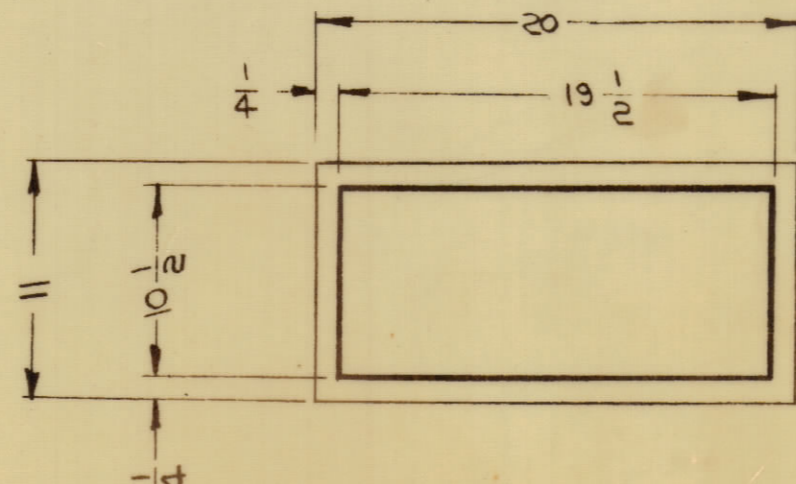
REVISIONS						
ZONE	SYM	DESCRIPTION	DATE	E.M.N. NO.	DRAFT	CHKD
-4-	X	EXPERIMENTAL RELEASE	9-14-64	X		
	0	ORIGINAL RELEASE FOR PRODUCTION	9-17-64			
	A	ON PICT. ON VLRB-1, LFCA-1 & HSS-3, P/0 VLRB-1 ADD. ON CSS-2 IF 14 RELS. WAS TO FORM. NOTE: ALL T.S. TO BE DELETED UNLESS OTHERWISE ADDED.	10-21-64	12700	92	
	B	ALL WIRING TO BE REF. SYN. CHARTS REF. PX871-7 & FUSE CHART ADDED.	1-5-65	13230	92	
	C	CA907-5 WAS CA907-2; CA907-3 WAS CA907-1; REV. CSS-2, BPS(1) WAS BPS(1); LSP-4A WAS HSS-3 FUSE CHART VALUES CHANGED.	2-1-65	13391	HUA	
06	D	ON CSS-2: "P903-1" ADDED.	4-24-65	13928	92	
	E	GROUP 1 WAS GROUP 2, A4308 WAS A3840, TERMS 13, 14, 15, 16, TO YARD/F WIRE 30, 31, 32, ON VLRB-1 W/REF. 90, 31, 32, TERMS 3, 4, 5, 14, 15, 16 CT ADDED.	8-10-65	14566	HVA	
	F	T8101-1 DELETED FROM VLRB-1. PL12-1 WAS PL112-2 ON VLRB-1, T8101-1 ADDED TO LSP4A.	3-8-66	15930	HVA	



UNIT	SYMBOL NO.	115	50/60	230	50/60
VLRB-1	F101	.5			.250
VLRB-1	F102	.5			N/C
VLRB-1	F103	.5			N/C
LFSB-1	F451	.5			.250
LFSB-1	F452	.5			N/C
LFSB-1	F453	.5			N/C
LFSB-1	F454	.5			N/C
LFCA-1	F101	.5			.250
LFCA-1	F102	.5			N/C
LFCA-1	F103	.5			N/C
CSS-2	F901	1.0			.5
CSS-2	F902	.25			N/C
BPS(1)	F1003	3.			N/C
BPS(1)	F1004	3.			N/C
DCP-2	F1	15.			8.0

NOTE: UNLESS OTHERWISE SPECIFIED ALL PLUG & FANNING STRIP NUMBERS CORRESPOND WITH JACK & TERMINAL BOARD NUMBERS.

NOTE: RED WIRE AND SHIELD GROUNDED.



- LAMINATING DETAIL - MATERIAL - VINYL PLASTIC, .015 THK

THE TECHNICAL MATERIEL CORP.
MAMARONECK, NEW YORK
MODEL LRRR-1
CK 786-F

REDUCE TO 10 1/2

REF: PX871-7

REQ'D.	ITEM	PART NUMBER	DESCRIPTION	SYMBOL
M. STURMER LIST OF MATERIAL				
MATERIAL		SEE DETAIL		
FINISH		THE TECHNICAL MATERIEL CORP. MAMARONECK, NEW YORK		
		DIAGRAM, WIRING		
UNLESS OTHERWISE SPECIFIED DIMENSIONS ARE IN INCHES AND INCLUDE CHEMICALLY APPLIED OR PLATED FINISHES	DRAWN	DATE	FINAL APPROVAL	DATE
	9-17-64	9-17-64		
DECIMALS ± .005	FRACTIONS ± 1/64	ANGLES ± 0° 30'		
TOLERANCES		CK786		
		F		

NOTES

QTY/UNIT	MODEL USED ON	ASSY. NO.
SCALE	A	

THE CONTENTS OF THIS DRAWING ARE THE EXCLUSIVE PROPERTY OF THE TECHNICAL MATERIEL CORP. ITS UNAUTHORIZED USE OR REPRODUCTION IN WHOLE OR IN PART IS STRICTLY FORBIDDEN.