

IF IT IS FOUND DESIRABLE TO CHANGE ANY TOLERANCE OR OTHER DETAIL SPECIFIED ON THIS DRAWING NOTIFY THE PURCHASER PROMPTLY.

MAXIMUM ALLOWABLE TOLERANCES HAVE BEEN DETERMINED AND DEVIATIONS WILL BE CAUSE FOR REJECTION. REMOVE ALL BURRS AND SHARP EDGES.

WINDING

23 TURNS, CLOSE WOUND OF (ITEM 5)

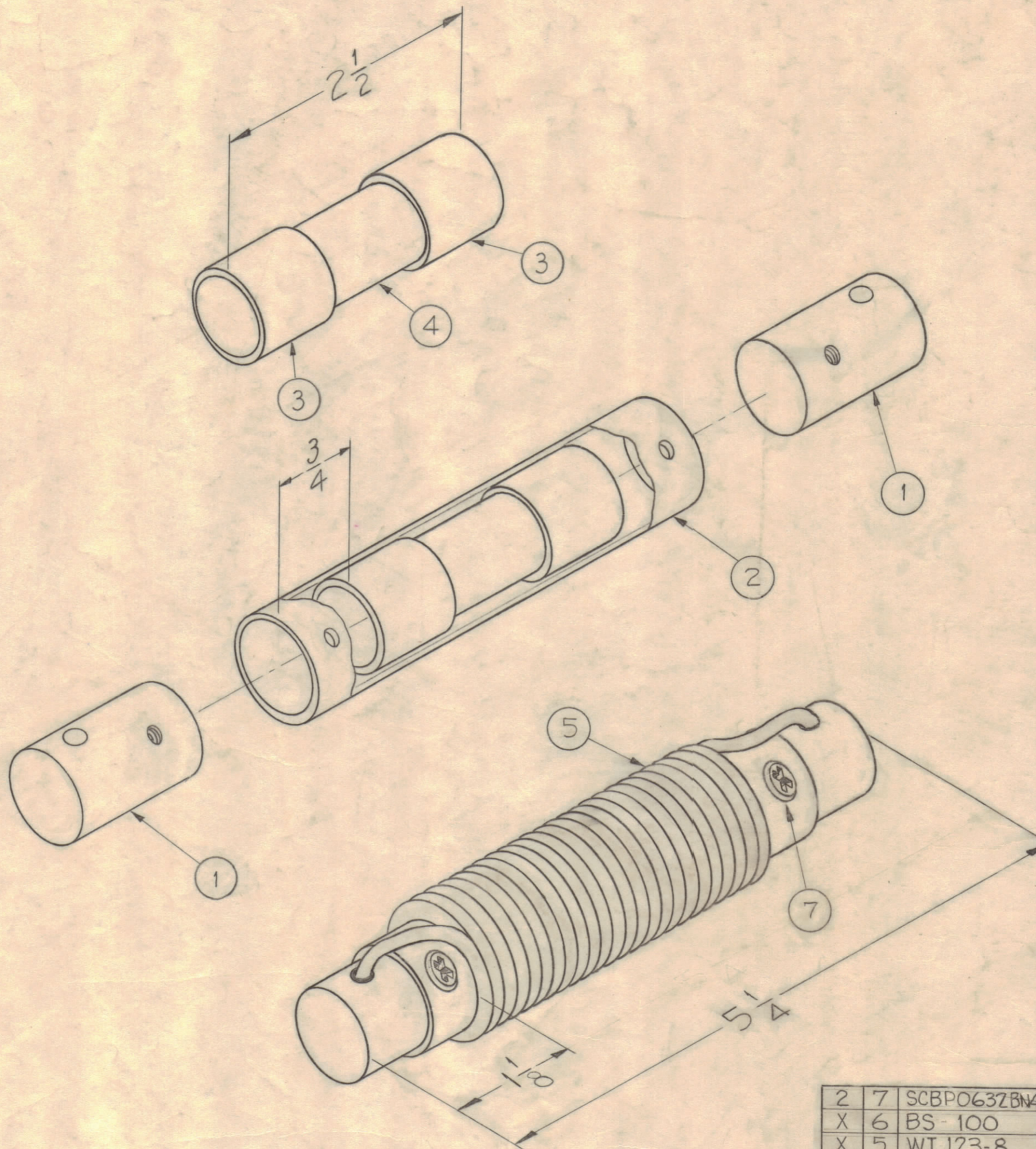
FABRICATION

- 1-BUILD UP FERRAMIC CORE (ITEM 4) WITH TAPE (ITEM 3) TO 3/4" DIA.
- 2-PRESS FIT CORE INTO COIL FORM (ITEM 2) LEAVE 3/4" SPACE EACH END OF COIL.
- 3-ASSEMBLE INSERTS (ITEM 1) INTO COIL FORM AS SHOWN. ASSEMBLE SCREWS (ITEM 7) AS SHOWN.
- 4-WIND 23 TURNS OF WIRE (ITEM 5) ON COIL FORM (ITEM 2), START WINDING 1-1/8 FROM END.
- 5-SOLDER WIRE ENDS TO INSERTS (ITEM 1)

TEST DATA

L-MIN. $10.5 \pm 10\% \mu H$
 L-MAX. $15.42 \pm 10\% \mu H$
 Q-10 OR GREATER
 F-2.5 MC ON BOONTON (260).
 F-10 KC ON MARCONI
 TEST ON BOONTON "Q" METER, MODEL 260
 MODEL 160 OR MARCONI

MEASURED W/
 BOONTON OR
 MARCONI



CL155 A

NOTICE TO PERSONS RECEIVING THIS DRAWING

THE TECHNICAL MATERIEL CORPORATION claims proprietary right in the material disclosed hereon. This drawing is issued in confidence for engineering information only and may not be reproduced or used to manufacture anything shown hereon without permission from THE TECHNICAL MATERIEL CORPORATION to the user. This drawing is loaned for mutual use and is subject to return at any time.

| | | | | | | | |
|------------|---|---|---------|---------|--------|---------|-----------|
| ISSUE | ITEM | CHANGED FROM | DATE | CH. NO. | DRAFTS | CHECKER | ENG. APP. |
| A | | REVISED AND REDRAWN | 7/20/67 | 18330 | | JAN | OSG |
| TOLERANCES | | SCALE: | | | | | |
| ALL OTHERS | DEC. DIM. \pm FRAC. DIM. \pm ANGULAR DIM. \pm | DRILL, PUNCH, COMMERCIAL STOCK SIZES AND MANUFACTURERS TOLERANCES ARE NOT INCLUDED. | | | | | |

| | | | | |
|---------------|---------|-------------|-----------|---------|
| 5 | GPT 10K | POWER ASSY | | 2-25-59 |
| REQ. PER UNIT | MODEL | PROJECT NO. | ASSY. NO. | DATE |
| USED ON | | | | |

| | | | | |
|--|----------|-----------------|--------------------------|-----------------|
| 2 | 7 | SCBP0632BN4 | SCREW, MACHINE | |
| X | 6 | BS-100 | SOLDER, SOFT | |
| X | 5 | WI 123-8 | WIRE, MAGNET FORMEX | |
| 1 | 4 | CI112QI-2R5L | CORE, FERRAMIC | |
| X | 3 | TA 101-3 | TAPE, GLASS 3/4" | |
| 1 | 2 | CF-127-4000 | COIL FORM | |
| 2 | 1 | PM 560 | INSERT, LINE FILTER COIL | |
| REQ. ITEM | PART NO. | DESCRIPTION | | SYMBOL |
| THE TECHNICAL MATERIEL CORP. MAMARONECK, NEW YORK | | | | |
| LINE FILTER COIL ASSY | | | | |
| MATERIAL | | WEIGHT PER PC. | | |
| TYPE & TEMPER | | | | |
| DRAWN | | ELEC. DES. APP. | | MECH. DES. APP. |
| CHECKED | | FINAL APPROVAL | | |
| FINISH & SPEC. NO. | | | | |

CL155 A