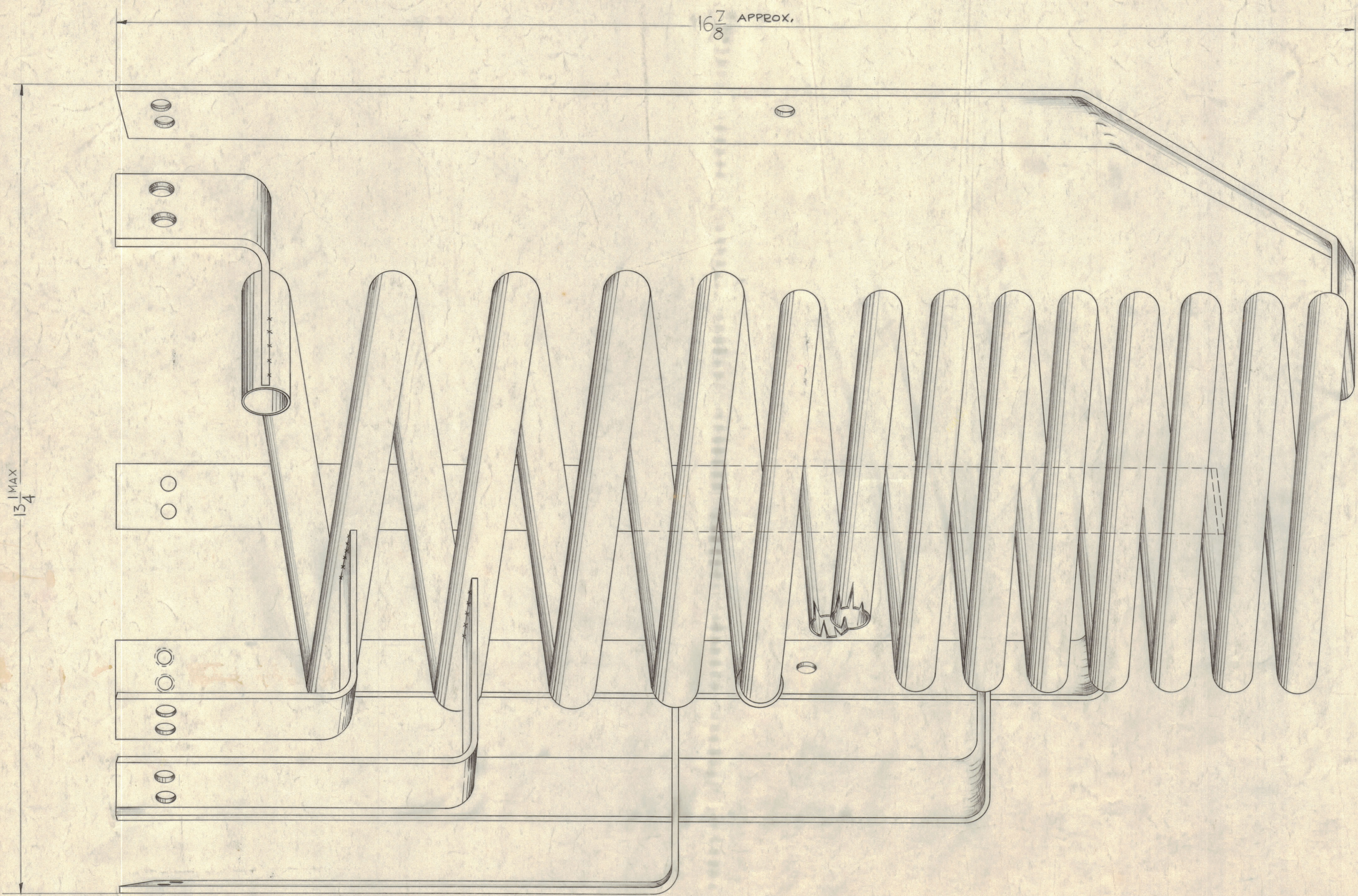


NOTICE TO PERSONS RECEIVING THIS DRAWING

THE TECHNICAL MATERIEL CORPORATION claims proprietary right in the material disclosed herein. This drawing is issued in confidence for engineering information only and may not be re-produced or used to manufacture anything shown hereon without permission from THE TECHNICAL MATERIEL CORPORATION to the user. This drawing is loaned for mutual assistance and is subject to recall at any time.

Property of:
THE TECHNICAL MATERIEL CORPORATION
MAMARONECK, NEW YORK



CL-277
B

— SPECIFICATIONS —

TOTAL INDUCTANCE ~ 12.5 UH
CURRENT RATING ~ 300 AMPS
SILVER PLATED COPPER

B	-	DWG UPDATED	12/13	18692	ED	GD	JHB
A	GT	Dim 16 7/8 was 16 3/4	12/16	5996	DJM	ST	COB
SYM	ZONE	DESCRIPTION	DATE	CH. NO.	DRAFTER	CHECKER	ENG. APP.
UNLESS OTHERWISE SPECIFIED:			SCALE (R/A-2196)				
DIMENSIONS ARE IN INCHES			MAXIMUM ALLOWABLE TOLERANCES HAVE BEEN DETERMINED AND ANY DEVIATIONS WILL BE CAUSE FOR REJECTION. REMOVE ALL BURRS & SHARP EDGES				
TOLERANCES ON FRACTIONS ± 1/64			DECIMALS ± .005		ANGLES ± 1/2°		

1	GPT-40K(14)	AS-125		12-23-63
1	GPT-40K	AS-120		11-15-61
REQ. PER UNIT	MODEL	SECTION	ASSY. NO.	DATE

REQ. ITEM	PART NO.	DESCRIPTION	SYMBOL
		THE TECHNICAL MATERIEL CORP. MAMARONECK, NEW YORK	
STOCK SIZE		COIL, R.F. MAIN TANK	
MATERIAL			
DRAWN	GDL	CHECKED	D. Mann
TYPE & TEMPER		HEAT TREAT. SPEC.	
FINISH & SPEC. NO.		ELEC. DES. APP. MECH. DES. APP.	
		SHEET OF	
		CL-277 B	