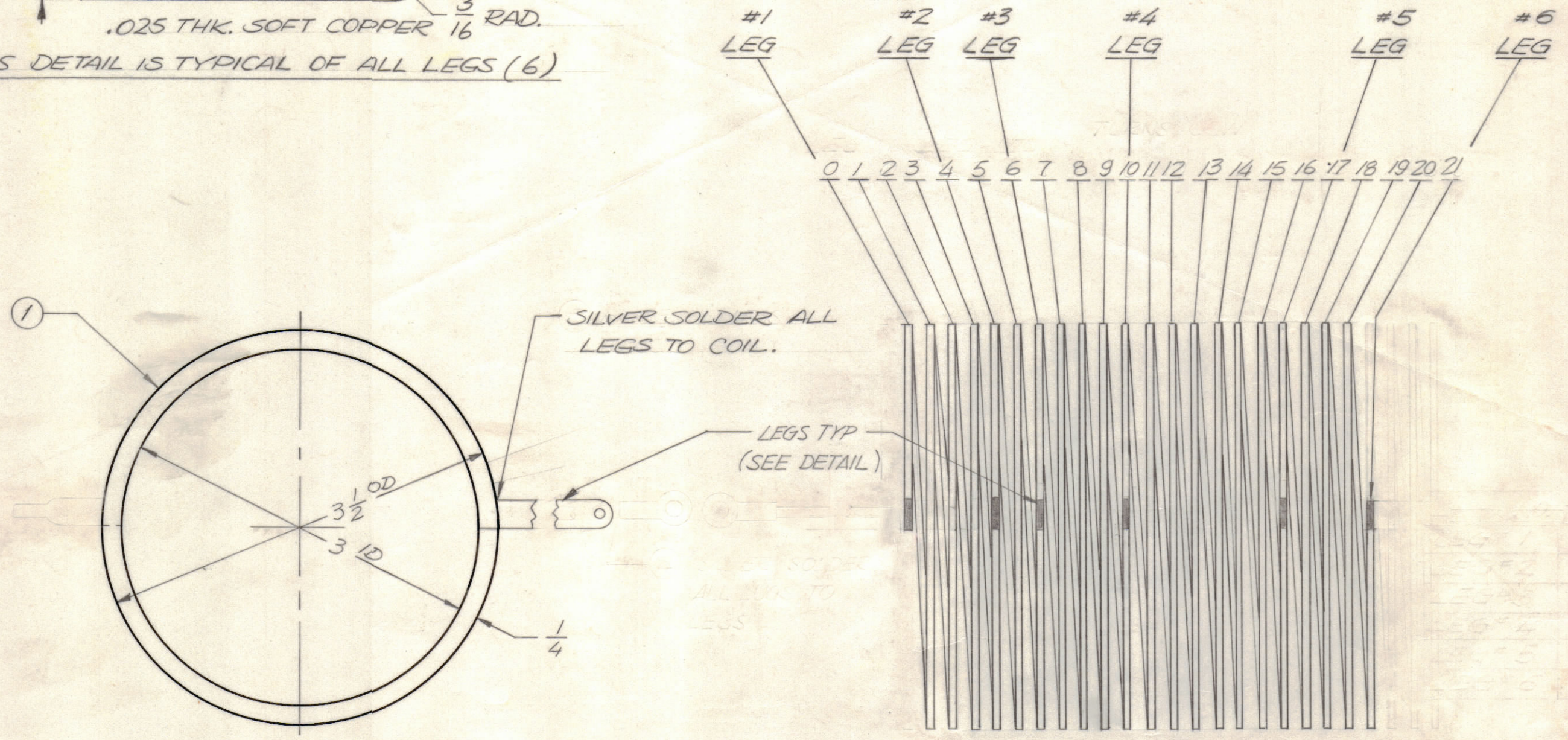
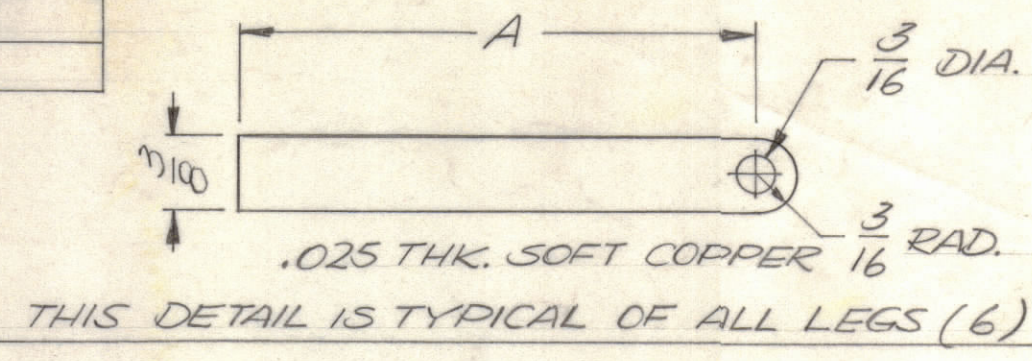
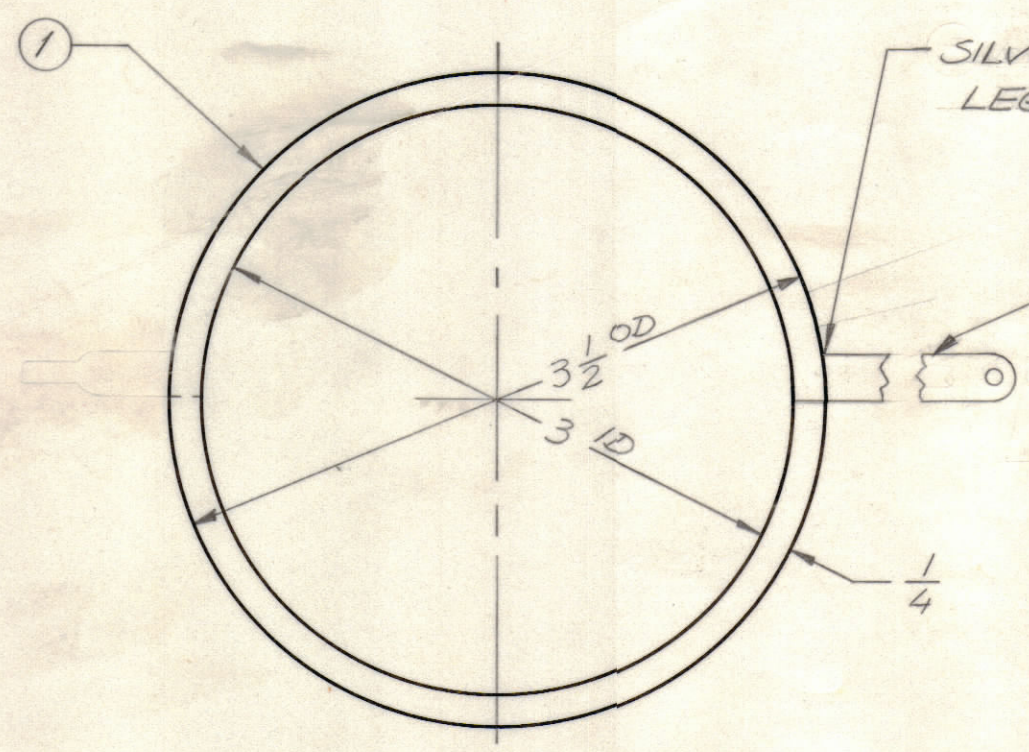


LEG NO.	A DIM.
LEG # 1	3 3/8
LEG # 2	3
LEG # 3	3 1/8
LEG # 4	3 7/8
LEG # 5	3 3/8
LEG # 6	2 3/8

REVISIONS							
E.M.N.NO	DRAFT	CHKD	ZONE	LTR	DESCRIPTION	DATE	APPROVED
	GE			X	EXP RELEASE	9-15-69	
	W			Ø	ORIGINAL RELEASE FOR PRODUCTION	1/20/70	
20836	CE	Ø		A	ADD LEG CHT. IT. I W/CL 114-19. ADD DET. DWG.	8-15-72	Ø



NOTE (LEG) OVER NUMBER OF COIL TURNS DENOTES PROTRUDING LEG FROM COIL. (DARKENED AREA.)



TURNS COUNTER CLOCKWISE  
(CUT OFF EXCESS WINDING BEFORE PLATING AS SHOWN.)

QTY. REQ.	ITEM	PART NO.	DESCRIPTION	SYMBOL
1	1	CL133-5R22CC	COIL	

LIST OF MATERIAL

F. BUDETTI

FINAL APPROVAL: *[Signature]* DATE: 1-19-70

MECH. DES. DATE: 1/19/70

ELECT. DES. DATE:

CHECKED DATE:

DRAWN: GEVANGELIST DATE: 9-15-69

THE TECHNICAL MATERIEL CORP.  
MAMARONECK, NEW YORK

COIL ASSY, LOW FREQ

MATERIAL: BRIGHT SILVER PLATE-SILVER KOTE FINISH

SIZE: C CODE IDENT NO.: 82679 DWG NO.: CL 440 ISSUE: A

SCALE: 1:1 SHEET OF

QTY / UNIT	MODEL USED ON	ASS'Y NO.
1	PALA 10K	AX 5084

APPLICATION

CODE

NOTICE TO PERSONS RECEIVING THIS DRAWING  
THE TECHNICAL MATERIEL CORPORATION claims proprietary right in the material disclosed hereon. This drawing is issued in confidence for engineering information only and may not be reproduced or used to manufacture anything shown hereon without permission from THE TECHNICAL MATERIEL CORPORATION to the user. This drawing is loaned for mutual assistance and is subject to recall at any time.

CL 440 A B