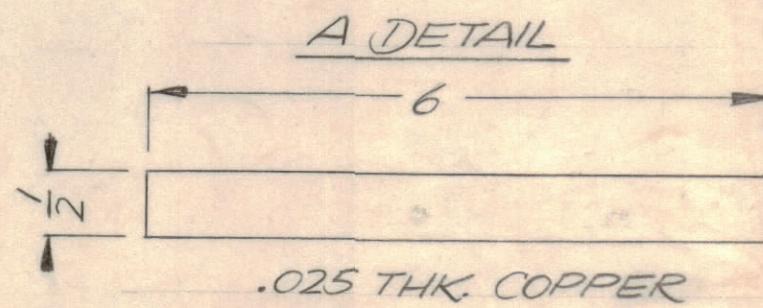
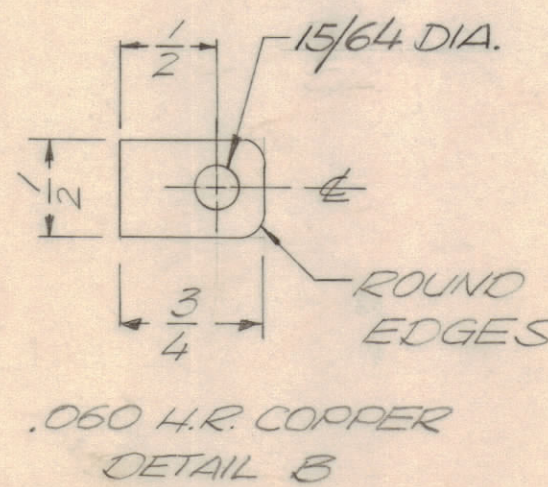
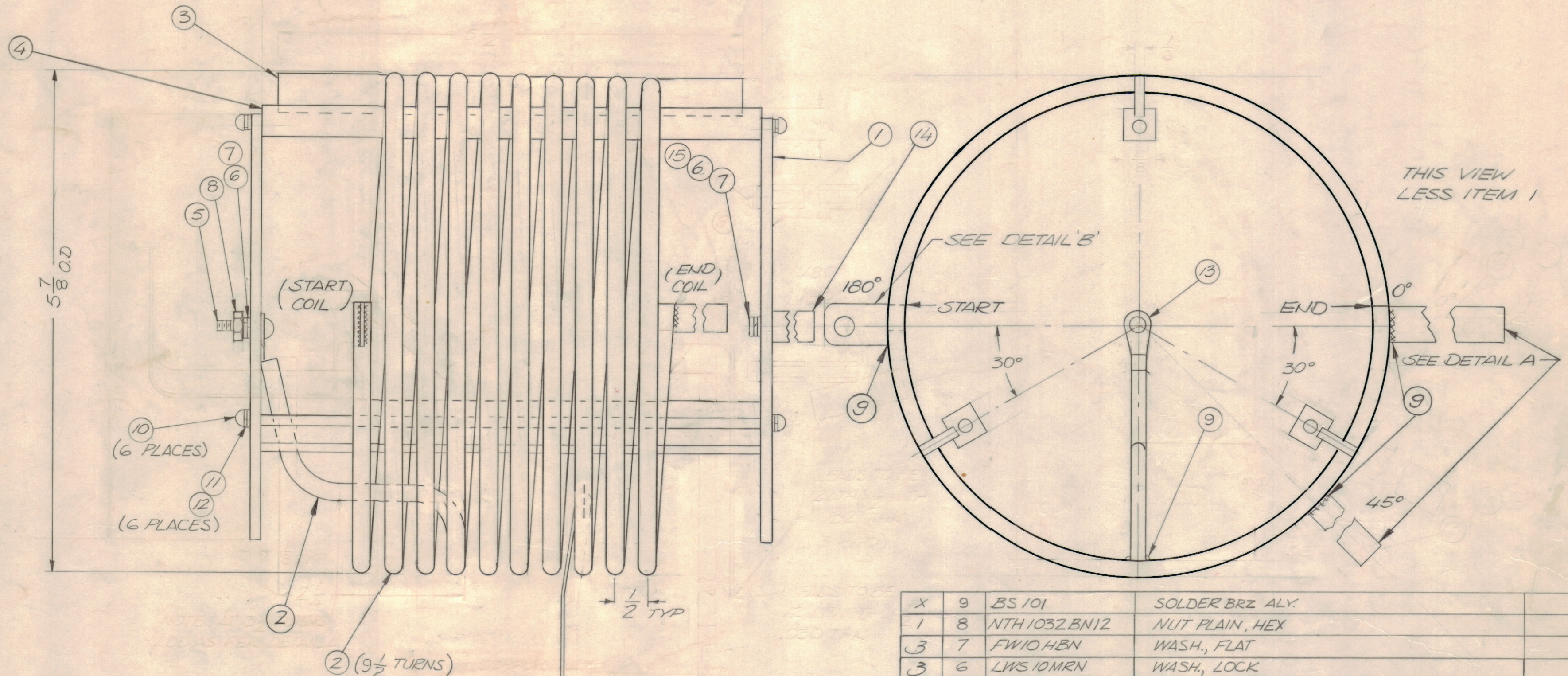


QTY	ITM.	PART NO.	DESCRIPTION
6	10	SCBPO632BN8	SCREW MACH.
6	11	FW06HBN	WASH., FLAT
6	12	LWS06MRN	WASH., LOCK
1	13	TE1032AE1625RB	LUG, TERMINAL
2	14	TE1032AE1625RB	SPACER
2	15	SCBP1032BN8	SCREW MACHINE

REVISIONS					DATE	APPROVED
E.M.N.NO	DRAFT	CHKD	ZONE	LTR	DESCRIPTION	
	GE	W		X	EXP RELEASE	8-28-69
	W			Ø	ORIGINAL RELEASE FOR PRODUCTION	1/20/70
	GE			4	ADD IT. 14, 15, 16, 17, 18 & DETAIL B	5/24/70
20582	GE			B	REVISED	4-7-72



QTY. REQ.	ITEM	PART NO.	DESCRIPTION	SYMBOL
X	9	BS 101	SOLDER BRZ ALY.	
1	8	NTH 1032BN12	NUT PLAIN, HEX	
3	7	FW10HBN	WASH., FLAT	
3	6	LWS10MRN	WASH., LOCK	
1	5	SCBP1032BN16	SCREW, MACH.	
3	4	PX 906-3	LEG MTG. COIL	
3	3	PX 1081	SPACER, INDUCTION COIL	
X	2	TU 100-3	3/16 COPPER TUBE	
2	1	PX 1075	BD. MTG. END, COIL	

QTY. REQ.	ITEM	PART NO.	DESCRIPTION	SYMBOL

UNLESS OTHERWISE SPECIFIED DIMENSIONS ARE IN INCHES AND INCLUDE CHEMICALLY APPLIED OR PLATED FINISHES		FINAL APPROVAL	DATE
TOLERANCES ON		MECH. DES.	DATE
DECIMALS	FRACTIONS	ELECT. DES.	DATE
.X ± .05	± 1/64	CHECKED	DATE
.XX ± .01	ANGLES	DRAWN	DATE
.XXX ± .005	± 0° -30'	G. EVANGELIST	8-28-69

LIST OF MATERIAL			
THE TECHNICAL MATERIEL CORP. MAMARONECK, NEW YORK			
COIL ASSEMBLY, OUTPUT XFORMER			

1	PALA 10 K	AX5084
QTY / UNIT	MODEL USED ON	ASS'Y NO.
APPLICATION		
CODE		

NOTICE TO PERSONS RECEIVING THIS DRAWING
 THE TECHNICAL MATERIEL CORPORATION claims proprietary right in the material disclosed hereon. This drawing is issued in confidence for engineering information only and may not be reproduced or used to manufacture anything shown hereon without permission from THE TECHNICAL MATERIEL CORPORATION to the user. This drawing is loaned for mutual assistance and is subject to recall at any time.

MATERIAL	
FINISH	SILVER PLATE

SIZE	CODE	IDENT NO.	DWG NO.	ISSUE
C	82679	CL443		B
SCALE		SHEET		OF