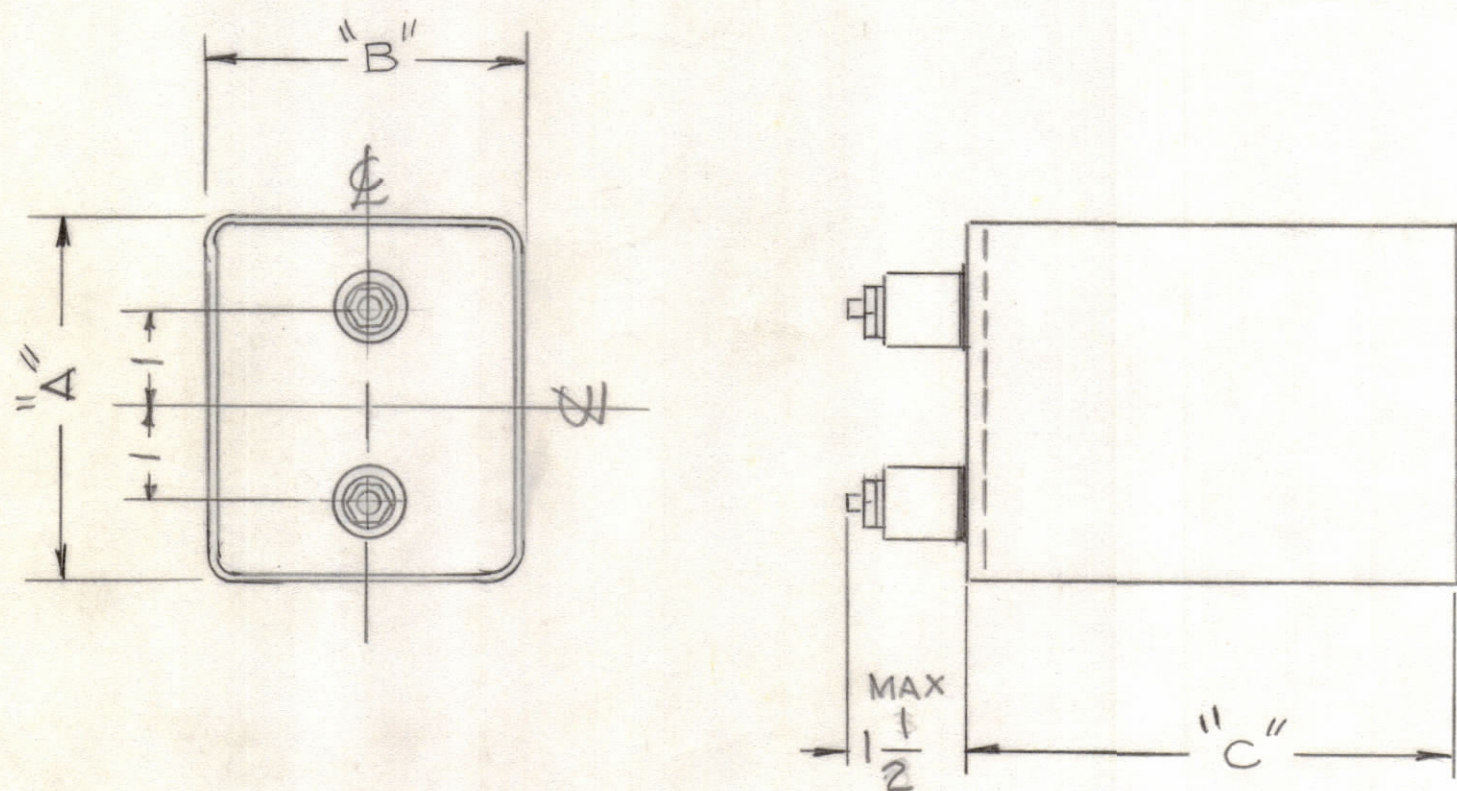


TMC P/NO	DIMENSIONS			KV DC	CAP. MFD	MFG P/NO	REQ'D
	A	B	C				
CN128-1	3-3/4	3 3/16	5 1/8	5.0	4.0	CC548	1
CN128-2	4 9/16	3 3/4	6	6.0	4.0	CC557 SEE NOTE	1

REVISIONS						
ZONE	LTR	DESCRIPTION	DATE	E.M.N.NO	DRAFT	CHKD APPD
	Ø	ORIGINAL RELEASE FOR PRODUCTION	1-28-80			FB CB



SPECIFICATIONS:
CASE: METALLIC, INSULATED, HERMETICALLY SEALED
FINISH: ZINC CHROMATE PRIMER AND SYNTHETIG GRAY ENAMEL, EXCEP TERMINAL END
TERMINALS: TWO SOLDER SEALED GLACED CERAMIC BUSHING WITH 10/32 OR 12-24 OR 1/4-20 THREAD STUDS.
PEAK VOLTAGE 150% OF RATED OPERATING VOLTAGE
TEMPERATURE RANGE: FROM -20°C TO +60°C

NOTE:
ON CN128-2 (MFG NO.557)
TERMINALS SHOULD BE
LOCATED AS SHOWN

1	HFT-1K	
QTY / UNIT	MODEL USED ON	ASS'Y NO.
APPLICATION		
	CODE	S401-454
<small>NOTICE TO PERSONS RECEIVING THIS DRAWING</small> <small>THE TECHNICAL MATERIEL CORPORATION claims proprietary right in the material disclosed hereon. This drawing is issued in confidence for engineering information only and may not be reproduced or used to manufacture anything shown hereon without permission from THE TECHNICAL MATERIEL CORPORATION to the user. This drawing is loaned for mutual assistance and is subject to recall at any time.</small>		

UNLESS OTHERWISE SPECIFIED DIMENSIONS ARE IN INCHES AND INCLUDE CHEMICALLY APPLIED OR PLATED FINISHES

TOLERANCES ON

DECIMALS	FRACTIONS
.X ± .05	± 1/64
.XX ± .01	ANGLES
.XXX ± .005	± 0° -30'

QTY. REQ.	ITEM	PART NO.	DESCRIPTION	SYMBOL
LIST OF MATERIAL				
<small>FINAL APPROVAL</small> 			<small>DATE</small> 6/21/78	
<small>MECH. DES.</small>			<small>DATE</small>	
<small>ELECT. DES.</small>			<small>DATE</small>	
<small>CHECKED</small>			<small>DATE</small>	
<small>DRAWN</small> GDL			<small>DATE</small> 6-19-78	
<small>MATERIAL</small> —			<small>SIZE</small> C	
<small>FINISH</small> —			<small>CODE IDENT.NO.</small> 82679	
			<small>DWG NO.</small> CN128	
			<small>ISSUE</small> Ø	
			<small>SCALE</small>	
			<small>SHEET</small> OF	

CN128 1 Ø B