

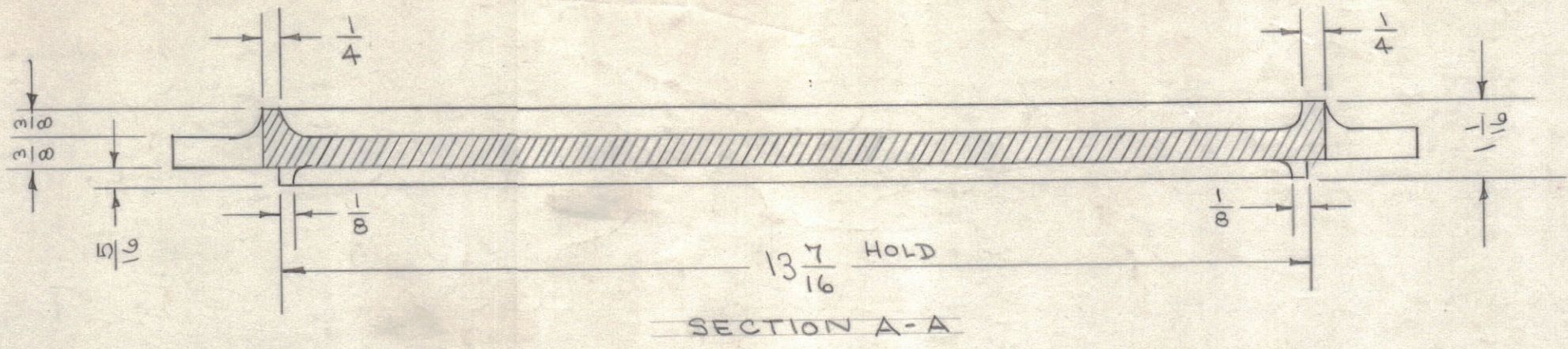
IF IT IS FOUND DESIRABLE TO CHANGE ANY TOLERANCE OR OTHER DETAIL SPECIFIED ON THIS DRAWING NOTIFY THE PURCHASER PROMPTLY.

MAXIMUM ALLOWABLE TOLERANCES HAVE BEEN DETERMINED AND DEVIATIONS WILL BE CAUSE FOR REJECTION. REMOVE ALL BURRS AND SHARP EDGES

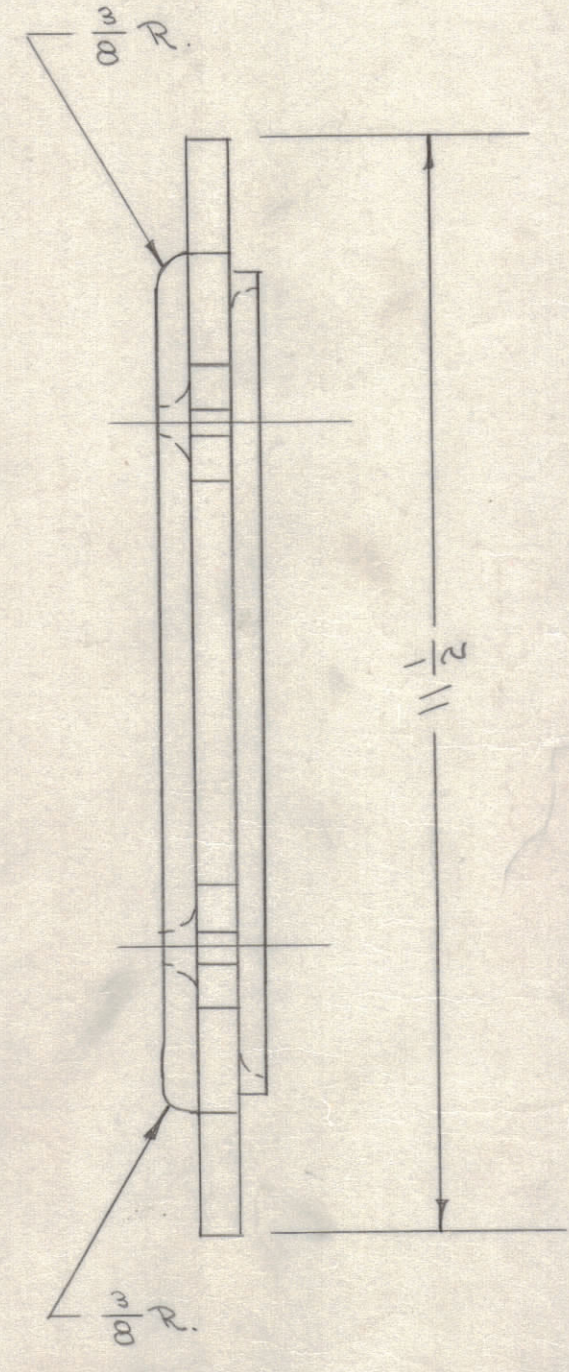
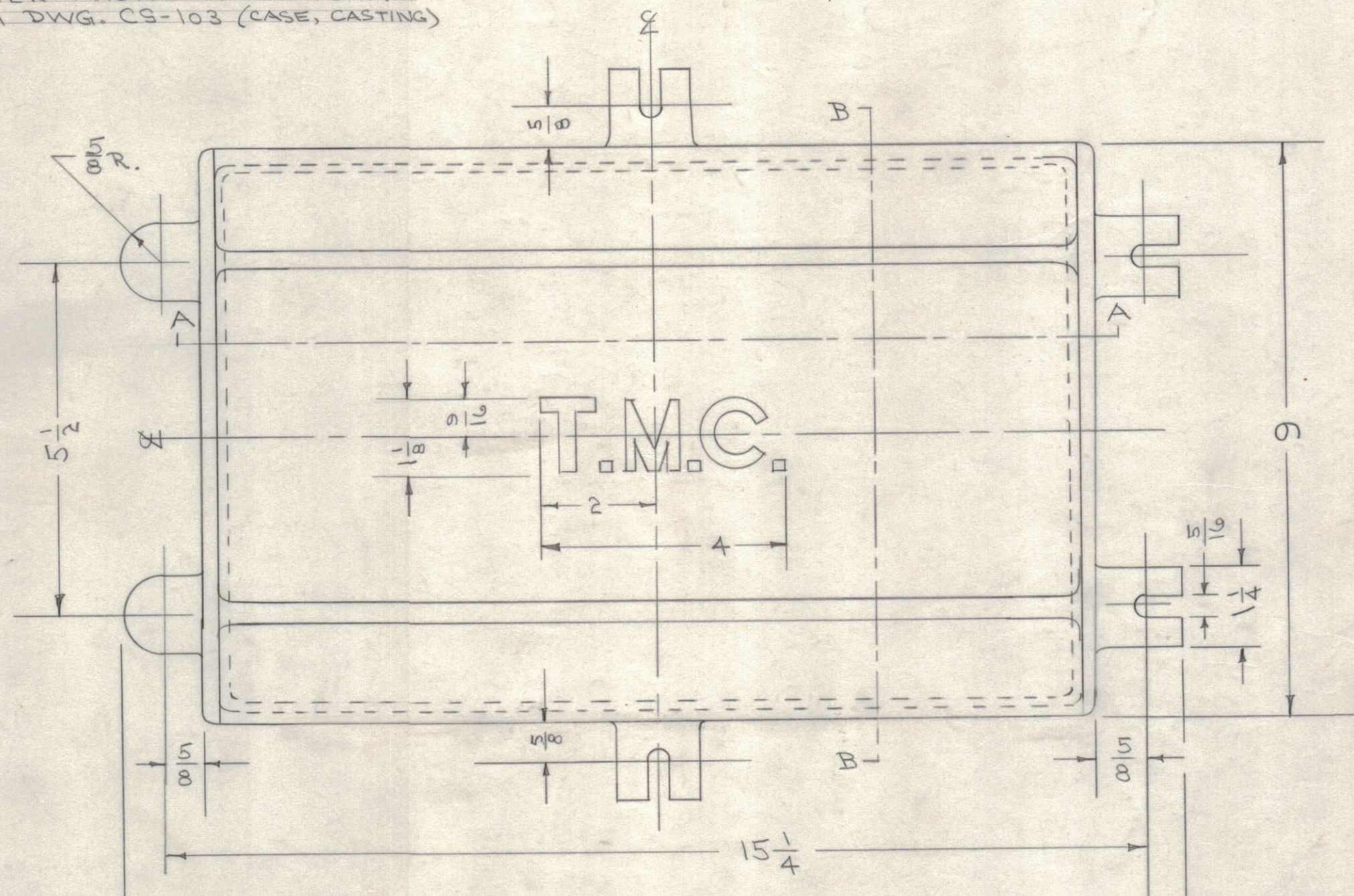
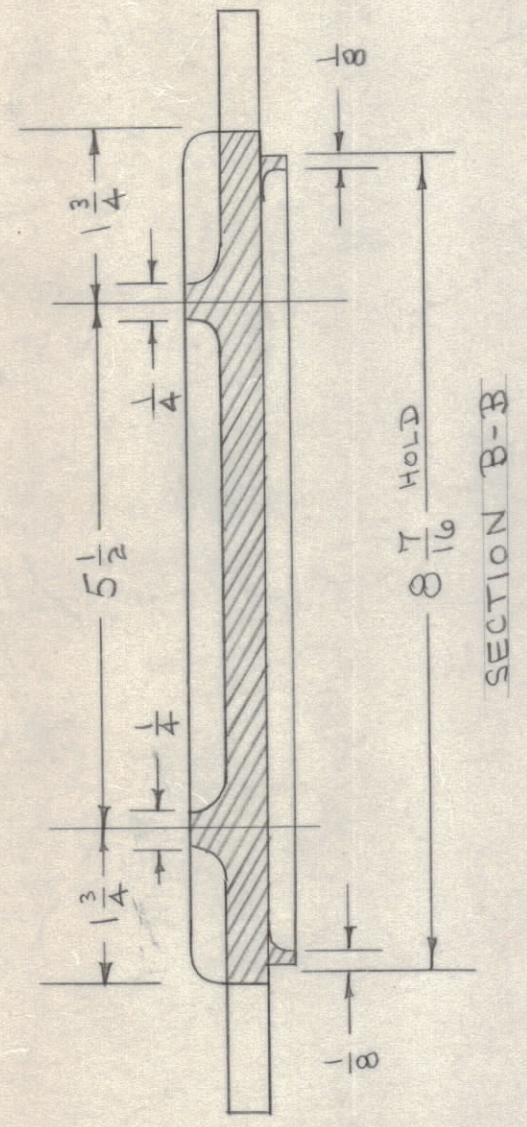
NOTICE TO PERSONS RECEIVING THIS DRAWING

THE TECHNICAL MATERIEL CORPORATION claims proprietary right in the material disclosed herein. This drawing is issued in confidence for engineering information only and may not be reproduced or used to manufacture anything shown hereon without permission from THE TECHNICAL MATERIEL CORPORATION to the user. This drawing is loaned for mutual assistance and is subject to recall at any time.

Property of:
THE TECHNICAL MATERIEL CORPORATION
MAMARONECK, NEW YORK



NOTE:
CORNER RADIUS TO CONFORM WITH DWG. CS-103 (CASE, CASTING)



NOTE:
CASTING MUST BE FREE OF POROSITY AND SAND HOLES. ALL SURFACES MUST BE SMOOTH.

CS-104 A

A	REDRAWN - NO CHANGE	4/3/53	C.D.D.	MDR	PJTB	
ISSUE	ITEM	CHANGED FROM	DATE	CN. NO. DRAFTS	CHECKER	ENG. APP.
TOLERANCES						
SCALE:						
ALL OTHERS	DEC. DIM. ± FRAC. DIM. ± ANGULAR DIM. ±		DRILL, PUNCH, COMMERCIAL STOCK SIZES AND MANUFACTURERS TOLERANCES ARE NOT INCLUDED.			

TRC-3500			3-14-56
BAC-2-S-1.5	230	A-526	9-16-53
BAC-2	157	A-188	10-17-52
BAC-2-S-20	108	A-107	7-25-52
MODEL	PROJECT NO.	ASS'Y. NO.	DATE
USED ON			

REF: MACHINING DWG. PM-114

REQ. ITEM	PART NO.	DESCRIPTION	SYMBOL
THE TECHNICAL MATERIEL CORP. MAMARONECK, NEW YORK			
COVER, CASTING			
MATERIAL	WEIGHT PER PC.		
ALUMINUM	356-T6		
TYPE & TEMPER		C.D.D. 4-0-53	ARB
STRESS RELIEVED		DRAWN	ELEC. DES. APP. MECH. DES. APP.
HEAT TREAT. SPEC.		100-4-22-53	ARB
SAND BLAST		CHECKED	FINAL APPROVAL
FINISH & SPEC. NO.		CS-104 A	