

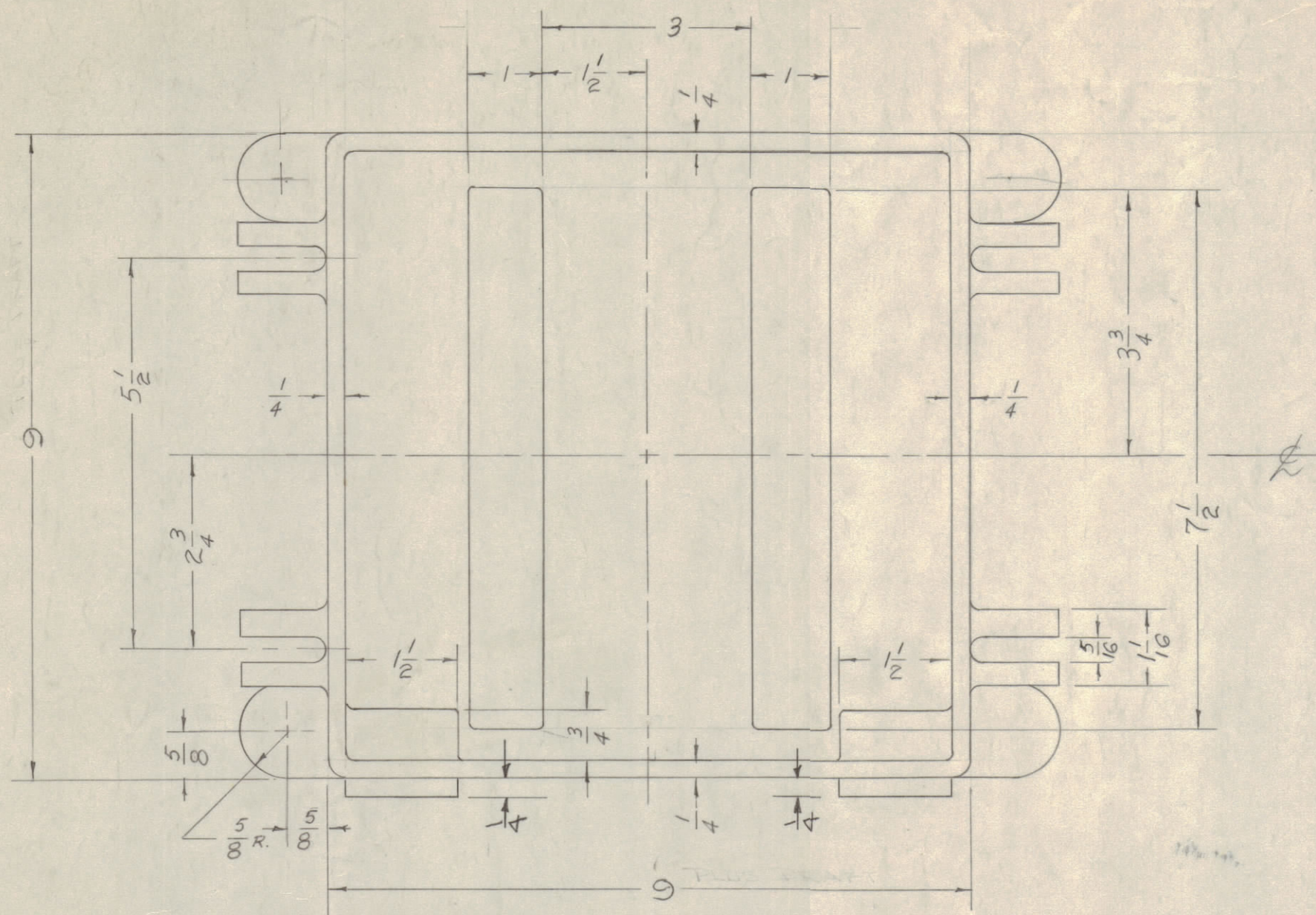
IF IT IS FOUND DESIRABLE TO CHANGE ANY TOLERANCE OR OTHER DETAIL SPECIFIED ON THIS DRAWING NOTIFY THE PURCHASER PROMPTLY.

MAXIMUM ALLOWABLE TOLERANCES HAVE BEEN DETERMINED AND DEVIATIONS WILL BE CAUSE FOR REJECTION. REMOVE ALL BURRS AND SHARP EDGES

NOTICE TO PERSONS RECEIVING THIS DRAWING

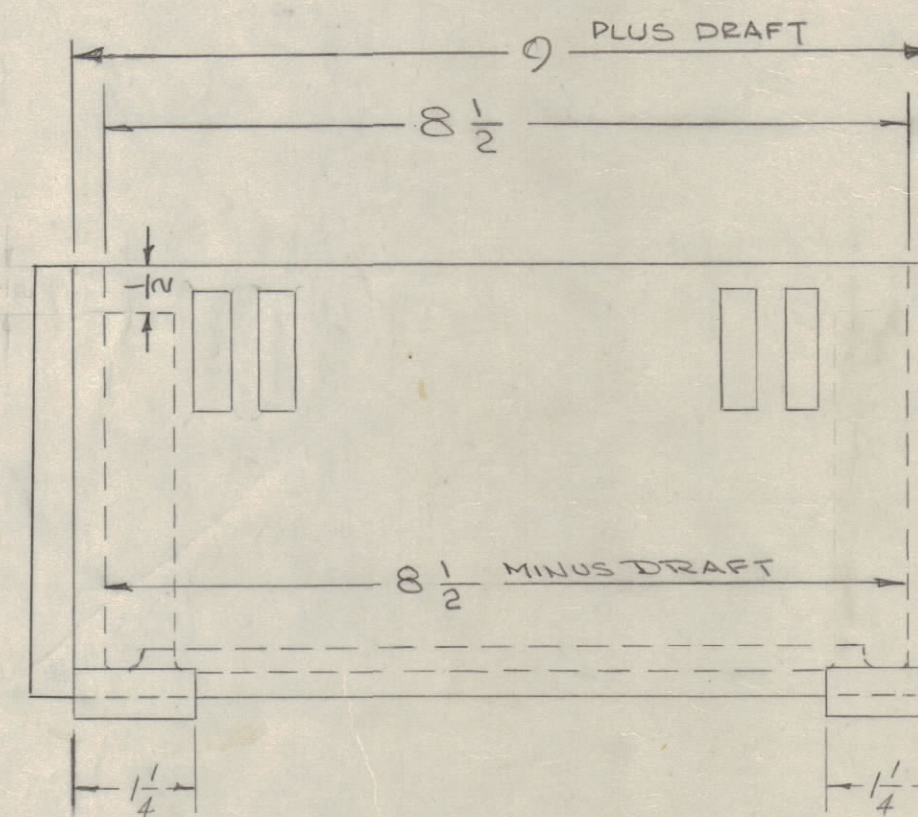
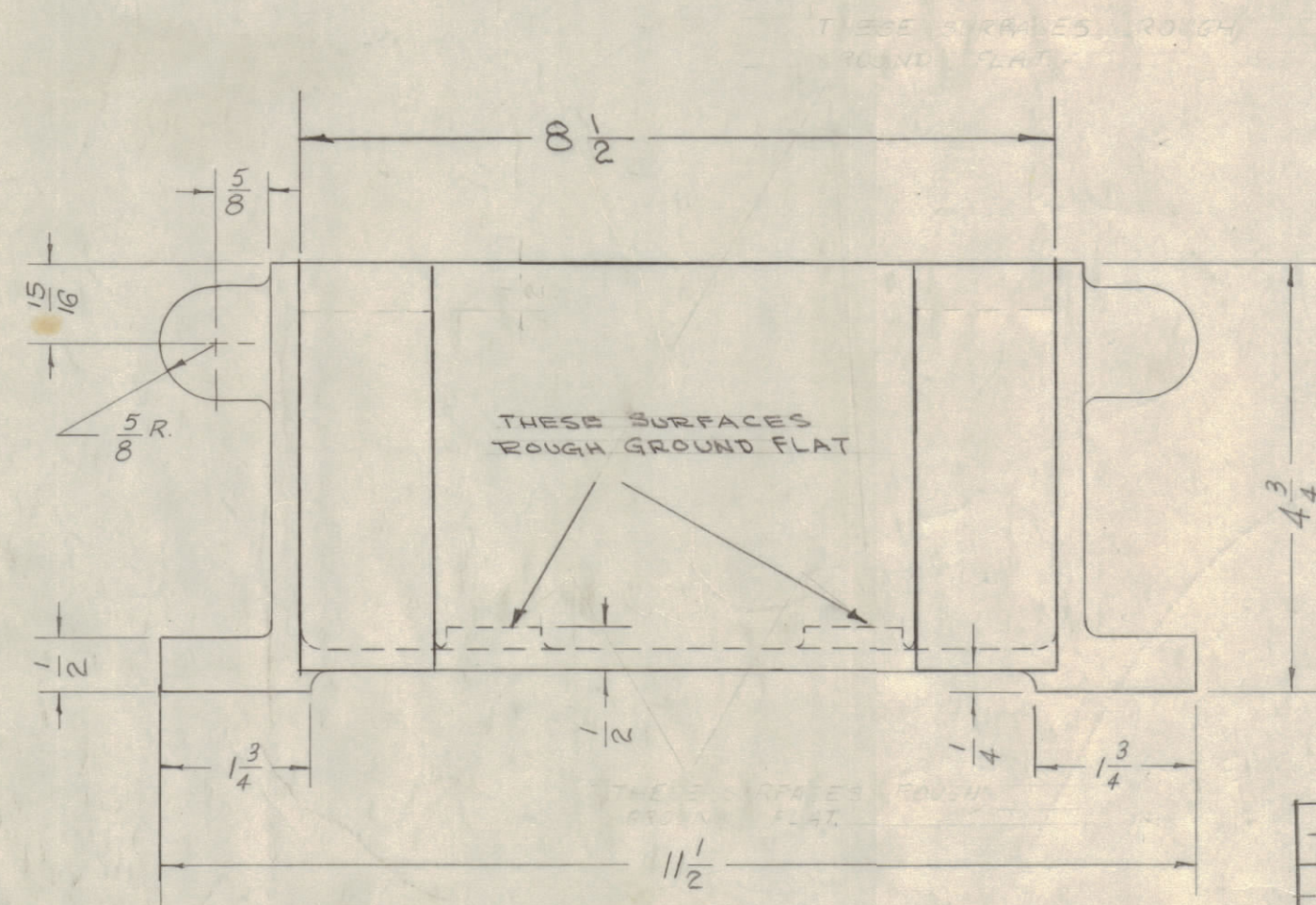
THE TECHNICAL MATERIEL CORPORATION claims proprietary right in the material disclosed herein. This drawing is issued in confidence and engineering information only and may not be reproduced or used to manufacture anything shown herein without permission from THE TECHNICAL MATERIEL CORPORATION to the user. This drawing is loaned for mutual assistance and is subject to recall at any time.

Property of:
THE TECHNICAL MATERIEL CORPORATION
MAMARONECK, NEW YORK



NOTE:
CASTING MUST BE FREE OF POROSITY,
SAND HOLES, AND ALL SURFACES SMOOTH.
USE MIN. DRAFT. (.125 OVERALL MAX. DRAFT.)

CS-120 B



REF: CS100 (COVER)

ISSUE ITEM	CHANGED FROM	DATE	CN. NO.	DRAFTS	CHECKER	ENG. APP.
B	MODEL CHART ADD	7-10-91		GDL		
A	BASES ADDED	5/9/56	1	JANES	WPC	

TOLERANCES	SCALE:
ALL OTHERS DEC. DIM. ± FRAC. DIM. ± ANGULAR DIM. ±	DRILL, PUNCH, COMMERCIAL STOCK SIZES AND MANUFACTURERS TOLERANCES ARE NOT INCLUDED.

MODEL	ASSY NO.	DATE
BAC-3-S-500		
BAC-1-S-20		
RAC-7A		
RAC-7		
TRC-500		
BAC-1-S-1.5	A525	
BAC-1	A189	
BAC-3-S-20	A108	
RAC	A101	

MODEL	PROJECT NO.	ASS'Y. NO.	DATE
RAC-45			
BAC-3-S-500			
RAC-7A			
RAC-7			
TRC-500			
BAC-3-S-20			
BAC-4-S600	153	A-233	10-10-52
BAC-4-S-20	108	A-109	8-1-52
BAC-1-S-20	108	A-106	8-1-52
TTC-1			
PAL15,16			
RTB			
VRA-5		PM-717	9-1-61
VRA-6		PM-717	9-1-61
VRA-2(A)		A-798	
VRA-2		A-798	
VRA-1		A-798	

REQ. ITEM	PART NO.	DESCRIPTION	SYMBOL
CASTING		THE TECHNICAL MATERIEL CORP.	
STOCK SIZE		MAMARONECK, NEW YORK	
ALUMINUM	#	CASE, CASTING	
MATERIAL	WEIGHT PER PC.		
356 - TG			
TYPE & TEMPER		B 2-20-56	WPC
STRESS, RELIEVED			
HEAT TREAT. SPEC.			
SAND BLAST			
FINISH & SPEC. NO.			

CS-120 B