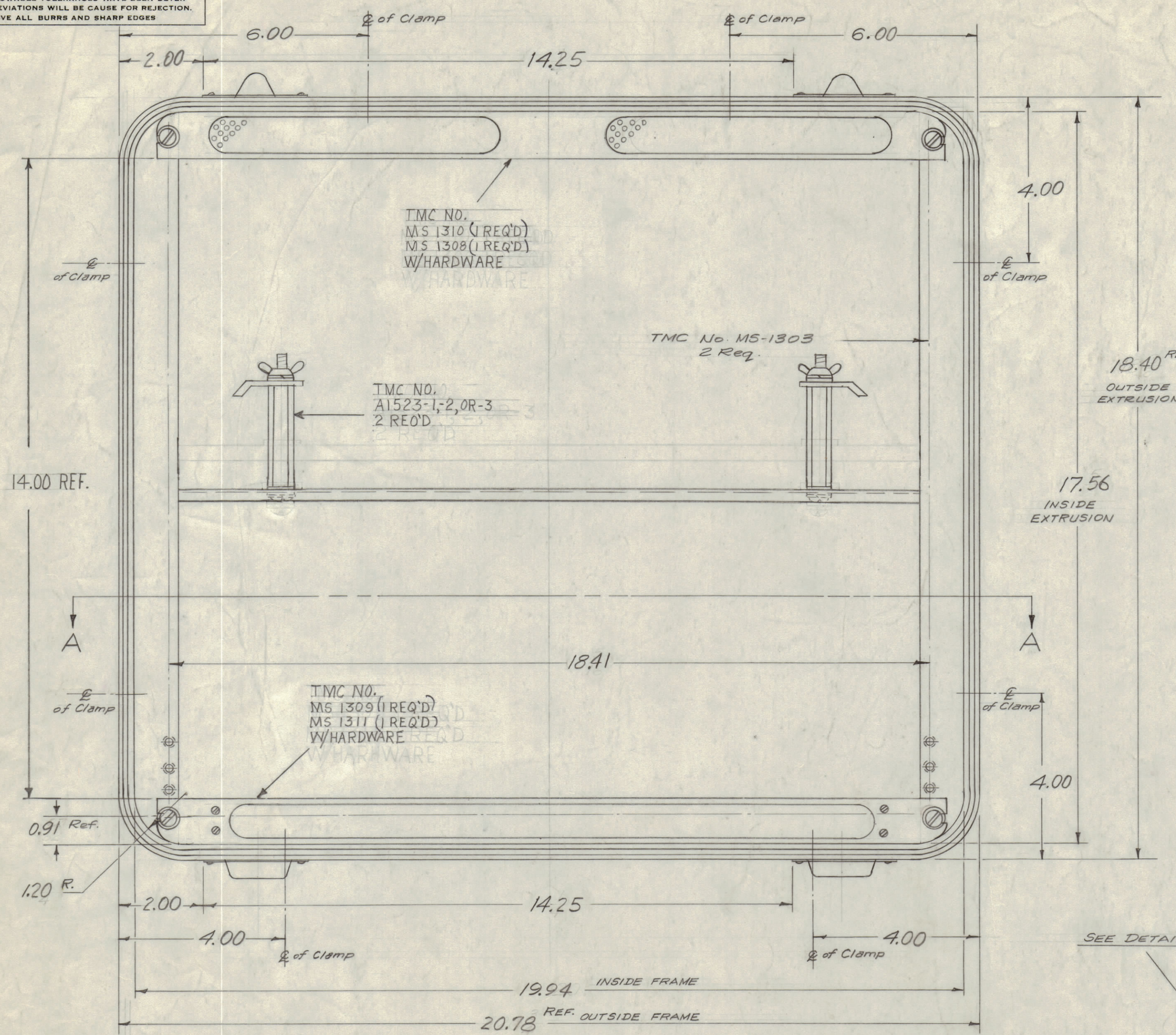


IF IT IS FOUND DESIRABLE TO CHANGE ANY TOLERANCE OR OTHER DETAIL SPECIFIED ON THIS DRAWING NOTIFY THE PURCHASER PROMPTLY.
 MAXIMUM ALLOWABLE TOLERANCES HAVE BEEN DETERMINED AND DEVIATIONS WILL BE CAUSE FOR REJECTION. REMOVE ALL BURRS AND SHARP EDGES.

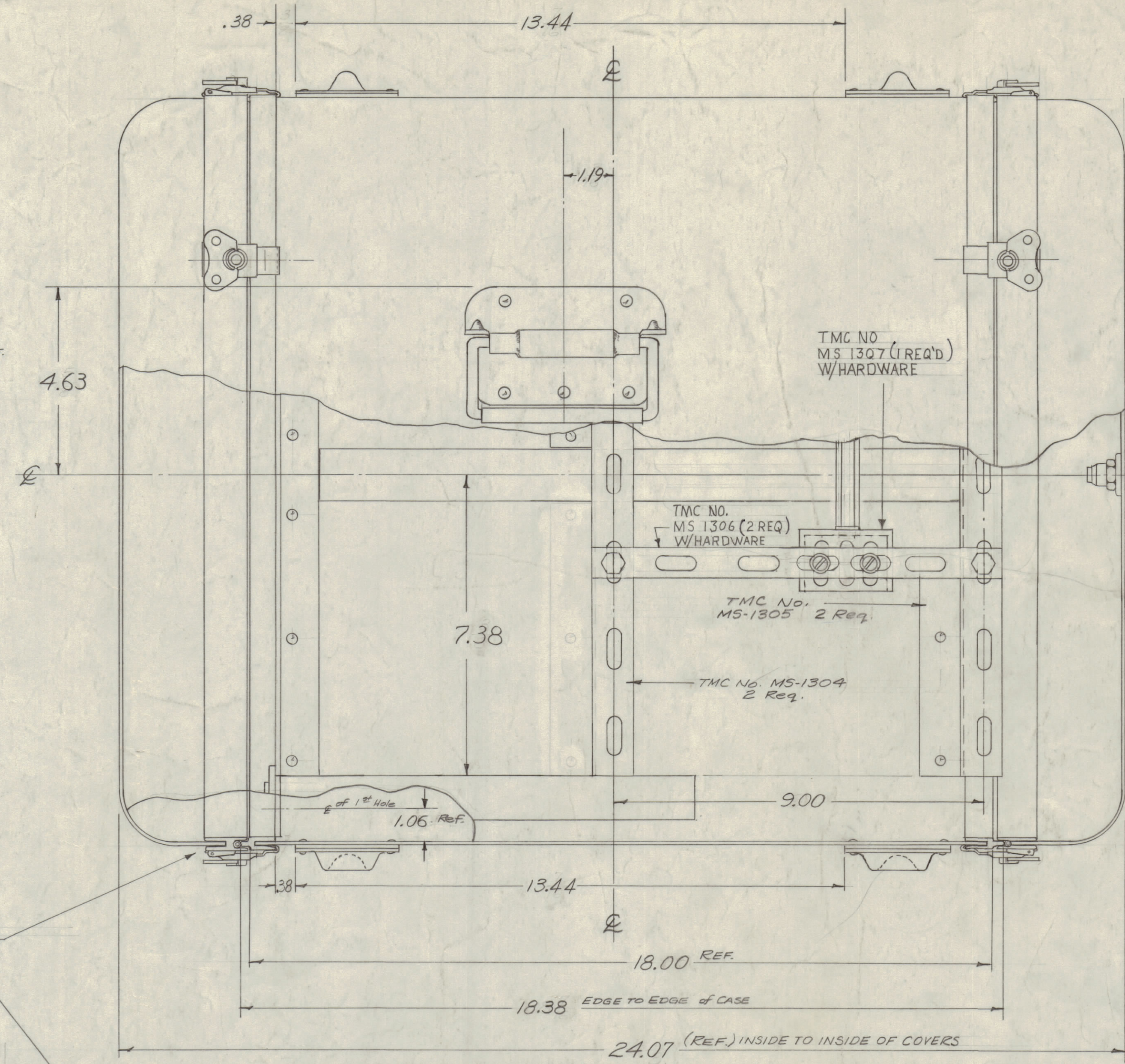
NOTICE TO PERSONS RECEIVING THIS DRAWING

THE TECHNICAL MATERIEL CORPORATION claims proprietary right in the material disclosed herein. This drawing is issued in confidence for engineering information only and may not be reproduced or used to manufacture anything shown herein without permission from THE TECHNICAL MATERIEL CORPORATION to the user. This drawing is loaned for mutual assistance and is subject to recall at any time.

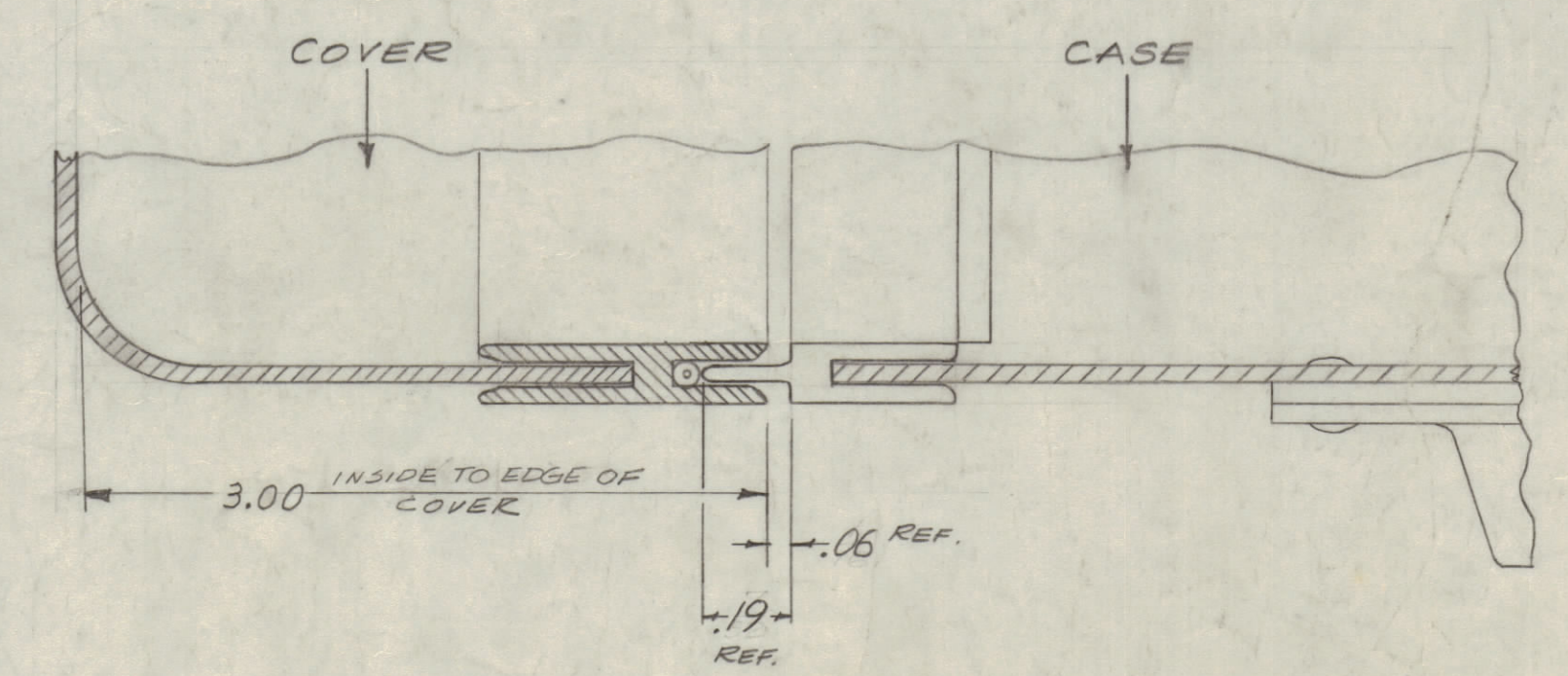
Property of:
 THE TECHNICAL MATERIEL CORPORATION
 MAMARONECK, NEW YORK



FRONT VIEW - COVERS REMOVED



SIDE VIEW - WITH COVERS



CASE & COVER MATING DETAIL (No Scale)

VENT & BREATHING VALVE ASSY
 TMC PART NO'S
 VA-100-1 (1 REQ)
 GA-158-5 (1 REQ)

TMC NO.	CONFIGURATION	USED ON
CW 104	AS SHOWN	TOC
CW 104-2	DELE	TOC-2
	MS 1308	
	MS 1309	
	MS 1310	
	MS 1311	
	MS 1307	
	MS 1304	
	MS 1305	
	MS 1306	
	A 1523	

Notes:
 Materials:
 Case & Covers - Fiberglass
 Extrusions - Aluminum
 Stacking Feet Shimis - Aluminum
 Front Rail Supp. }
 Rear Rail Supp. } Steel, Cadmium Plated
 Panel Supp.
 Clamps - Steel-plated
 Stacking Feet - Steel-plated
 Cover Gasket - Surgical Rubber Tubing

MS-1303, 1304, 1305, 1306, 1308, 1309, 1310, 1311
 A 1523
 SUP'D BY VENDOR (UNLESS OTHERWISE SPECIFIED)

CASE SHALL BE IN ACC WITH MIL-T-7945A AND MIL-STD-108-D

REF: MANUFACTURERS DWG. No. SK-66300-F

ISSUE	CHANGED FROM	DATE	CN. NO.	DRAFTS	CHECKER	ENG. APP.
B	PNS & CHART ADDED	8.24.57	18300	H.G.		
A	VA-100-1 & GA-158-5 ADDED MIL-STD-108-D WAS REVISED UPDATED & REVISED ALL DIMS.	10/1/53	10081			

SECTION A-A

REQ. PER UNIT	MODEL	PROJECT NO.	ASSY. NO.	DATE	USED ON
1	TOC			8-1-58	

REQ. ITEM	PART NO.	DESCRIPTION	SYMBOL
THE TECHNICAL MATERIEL CORP. MAMARONECK, NEW YORK			
CASE, TRANSIT/OPERATING			
DRAWN: 16/11/58			
HEAT TREAT. SPEC. CHECKED: 4 ED 228			
FINAL APPROVAL: CW-104 B			